

PanelShield™ SA

a vapor permeable Air Barrier (AB) Water Resistant Barrier (WRB) sheet membrane
Product No.: 19309099

PanelFlashing™

Product No.: 11 3/4" 43305500, 6" 43304899, 4" 43304599

Tools and Accessories



Two-handed
Weighted Roller



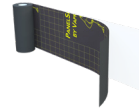
Gloves



Sausage gun



Flashing
accessories



11 3/4", 6", 4"
PanelFlashing

Delivery, Packaging and Storage

Store materials on end in original packaging at temperatures between 40°F and 120°F (4.4°C and 48.9°C). Protect materials from direct sunlight and inclement weather until ready for use.

Climate and UV Exposure

Sustains a maximum 12 months UV and climate exposure prior to cladding installation.

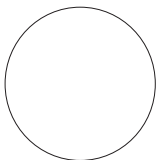
Substrate Preparation

- Substrates must be clean and free of any contaminants.
- Substrate surface must be dry to the touch with the ambient temperature above 20°F (-6°C).
- PRIMER IS NOT RECOMMENDED OR REQUIRED

Compatible Substrates



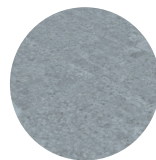
Exterior Gypsum
Sheathing



Rigid
Insulation



OSB



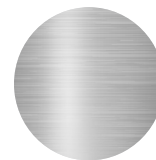
Concrete



Brick



Plywood



Metal
(Steel, Aluminum)



Fiberglass
Window and
Door Frames

Do's

- DO roll membrane with two-handed roller to ensure proper adhesion to substrate
- DO install above 20°F (- 6.0°C) and rising
- DO install in a "weatherboard or shingle fashion"
- DO cut membrane using basic hand tools
- DO ensure surfaces are in sound, clean condition and free of oil, grease, dirt, excess mortar or other contaminants
- DO fill voids and gaps in substrate greater than 7/8" (22.2 mm) wide
- DO use behind closed-joint rainscreen cladding assemblies
- DO apply a bead of VaproBond if desired adhesion between membranes is not attainable due to site conditions
- DO remove release liner from under foot as soon as the membrane is installed (red)
- Do properly dispose of release liner

Don't's

- DON'T install reverse laps that can result in water ingress
- DON'T leave exposed to UV and weather for over 12 months
- DON'T install below 20°F (- 6.0°C) and decreasing
- DON'T install over gaps greater 7/8" (22.2mm) wide unless filled
- DON'T store materials in direct sunlight and inclement weather until ready for use
- DON'T install on dirty or contaminated substrates
- DON'T use primer
- DON'T leave release liner underfoot

PRODUCT DESCRIPTION

PanelShield SA Self-Adhered is a self-adhered, water resistive vapor permeable air barrier sheet membrane.

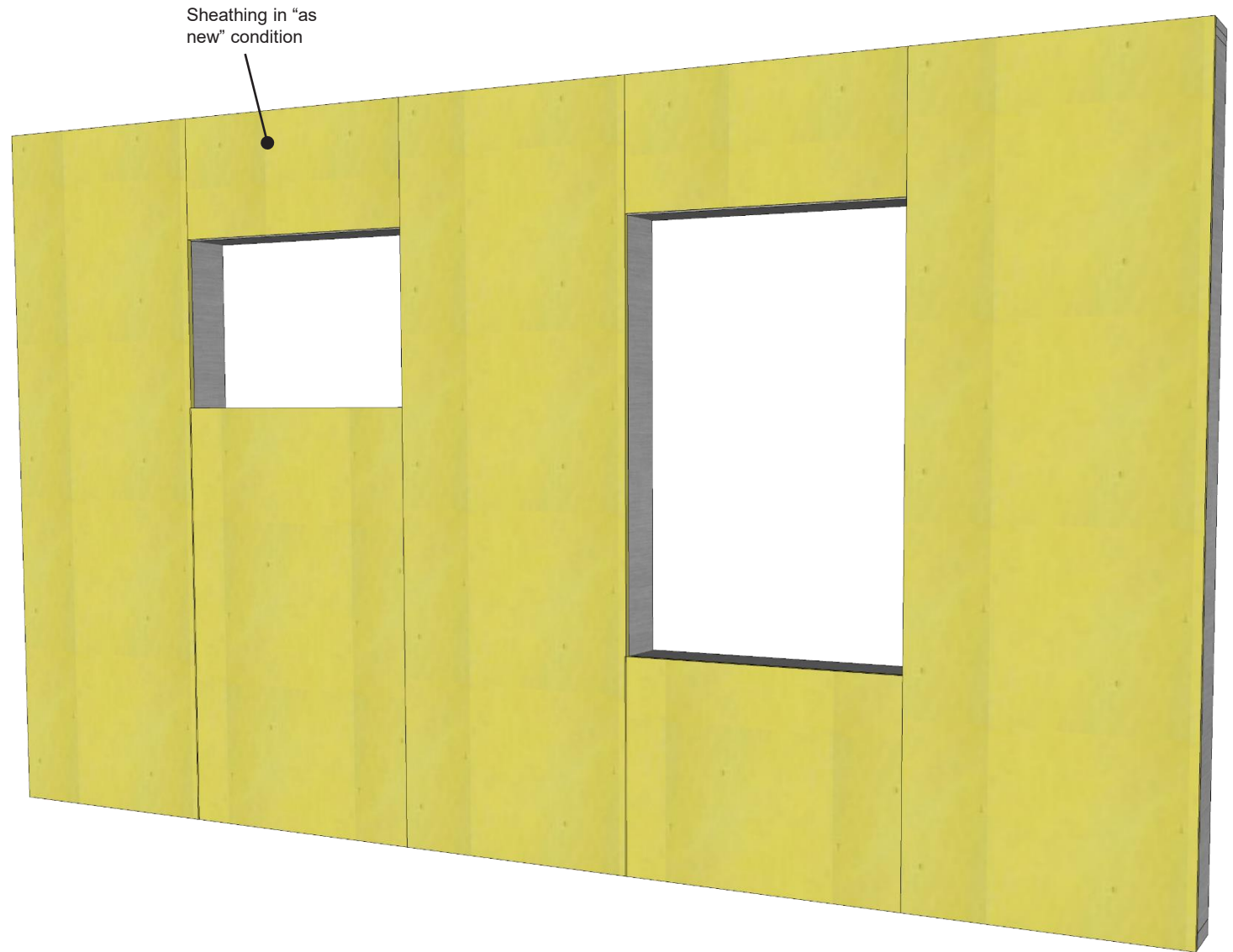
DISCLAIMER

Detail sketch is generic, representing suggested best practices for VaproShield materials, and does not represent a specific job site condition and therefore may not be applicable to certain projects. Detail sketch is designed for use as a reference and must be approved by the designer/ consultant of record for each project prior to installation by the subcontractor. Changes and approvals of VaproShield details are the sole responsibility of the designer/consultant of record. VaproShield is **not** the designer of record for building enclosure details and takes no responsibility for the accuracy or interpretation of actual project site conditions.

Always check www.VaproShield.com for the latest details and installation instructions

VaproShield LLC
915 26th Ave. N.W. Suite C5
Gig Harbor, WA 98335
Toll Free: 1.866.731.7663
www.VaproShield.com
© VaproShield 3/15/2016

VaproShield Canada
101-1001 West Broadway Suite 545
Vancouver, B.C. V6H 4E4, Canada
Toll Free: 1.866.871.8263
www.VaproShield.ca



PRODUCT DESCRIPTION

PanelShield SA Self-Adhered is a self-adhered, water resistive vapor permeable air barrier sheet membrane.

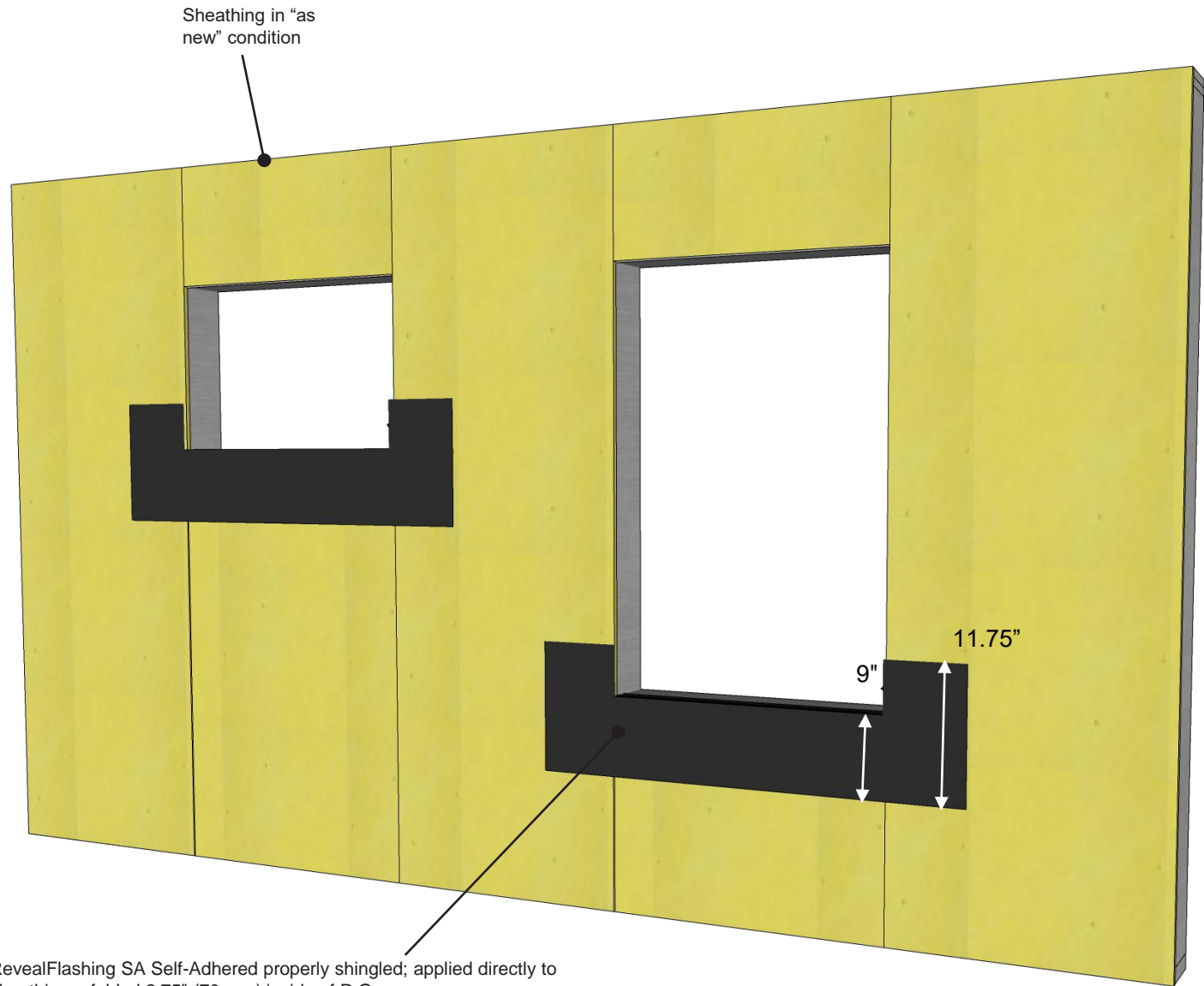
DISCLAIMER

Detail sketch is generic, representing suggested best practices for VaproShield materials, and does not represent a specific job site condition and therefore may not be applicable to certain projects. Detail sketch is designed for use as a reference and must be approved by the designer/ consultant of record for each project prior to installation by the subcontractor. Changes and approvals of VaproShield details are the sole responsibility of the designer/consultant of record. VaproShield is **not** the designer of record for building enclosure details and takes no responsibility for the accuracy or interpretation of actual project site conditions.

Always check www.VaproShield.com for the latest details and installation instructions

VaproShield LLC
915 26th Ave. N.W. Suite C5
Gig Harbor, WA 98335
Toll Free: 1.866.731.7663
www.VaproShield.com
© VaproShield 3/15/2016

VaproShield Canada
101-1001 West Broadway Suite 545
Vancouver, B.C. V6H 4E4, Canada
Toll Free: 1.866.871.8263
www.VaproShield.ca



RevealFlashing SA Self-Adhered properly shingled; applied directly to sheathing + folded 2.75" (70 mm) inside of R.O.

Note: Total of 11.75" (298.5 mm) of flashing should be used:

- 9" (228.6 mm) of flashing should be left on the face of the sheathing
- 6" (152.4 mm) of release film from the bottom of the flashing to be left attached for shingling over membrane.

PRODUCT DESCRIPTION

PanelShield SA Self-Adhered is a self-adhered, water resistive vapor permeable air barrier sheet membrane.

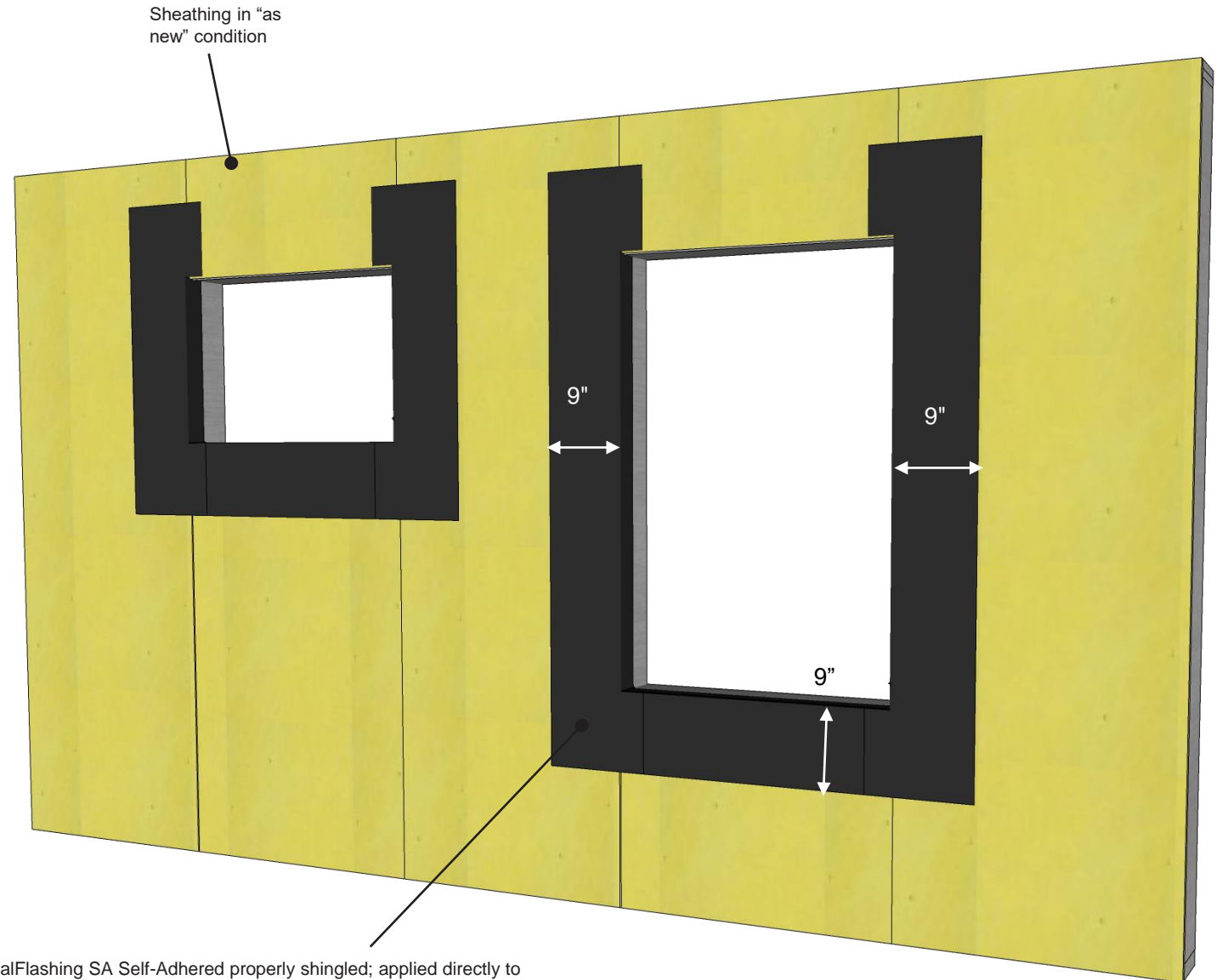
DISCLAIMER

Detail sketch is generic, representing suggested best practices for VaproShield materials, and does not represent a specific job site condition and therefore may not be applicable to certain projects. Detail sketch is designed for use as a reference and must be approved by the designer/ consultant of record for each project prior to installation by the subcontractor. Changes and approvals of VaproShield details are the sole responsibility of the designer/consultant of record. VaproShield is **not** the designer of record for building enclosure details and takes no responsibility for the accuracy or interpretation of actual project site conditions.

Always check www.VaproShield.com for the latest details and installation instructions

VaproShield LLC
915 26th Ave. N.W. Suite C5
Gig Harbor, WA 98335
Toll Free: 1.866.731.7663
www.VaproShield.com
© VaproShield 3/15/2016

VaproShield Canada
101-1001 West Broadway Suite 545
Vancouver, B.C. V6H 4E4, Canada
Toll Free: 1.866.871.8263
www.VaproShield.ca



RevealFlashing SA Self-Adhered properly shingled; applied directly to sheathing + folded 2.75" (70 mm) inside of R.O.

Note: Total of 11.75" (298.5 mm) of flashing should be used:

- 9" (228.6 mm) of flashing should be left on the face of the sheathing
- 6" (152.4 mm) of release film from the bottom of the flashing to be left attached for shingling over membrane.

PRODUCT DESCRIPTION

PanelShield SA Self-Adhered is a self-adhered, water resistive vapor permeable air barrier sheet membrane.

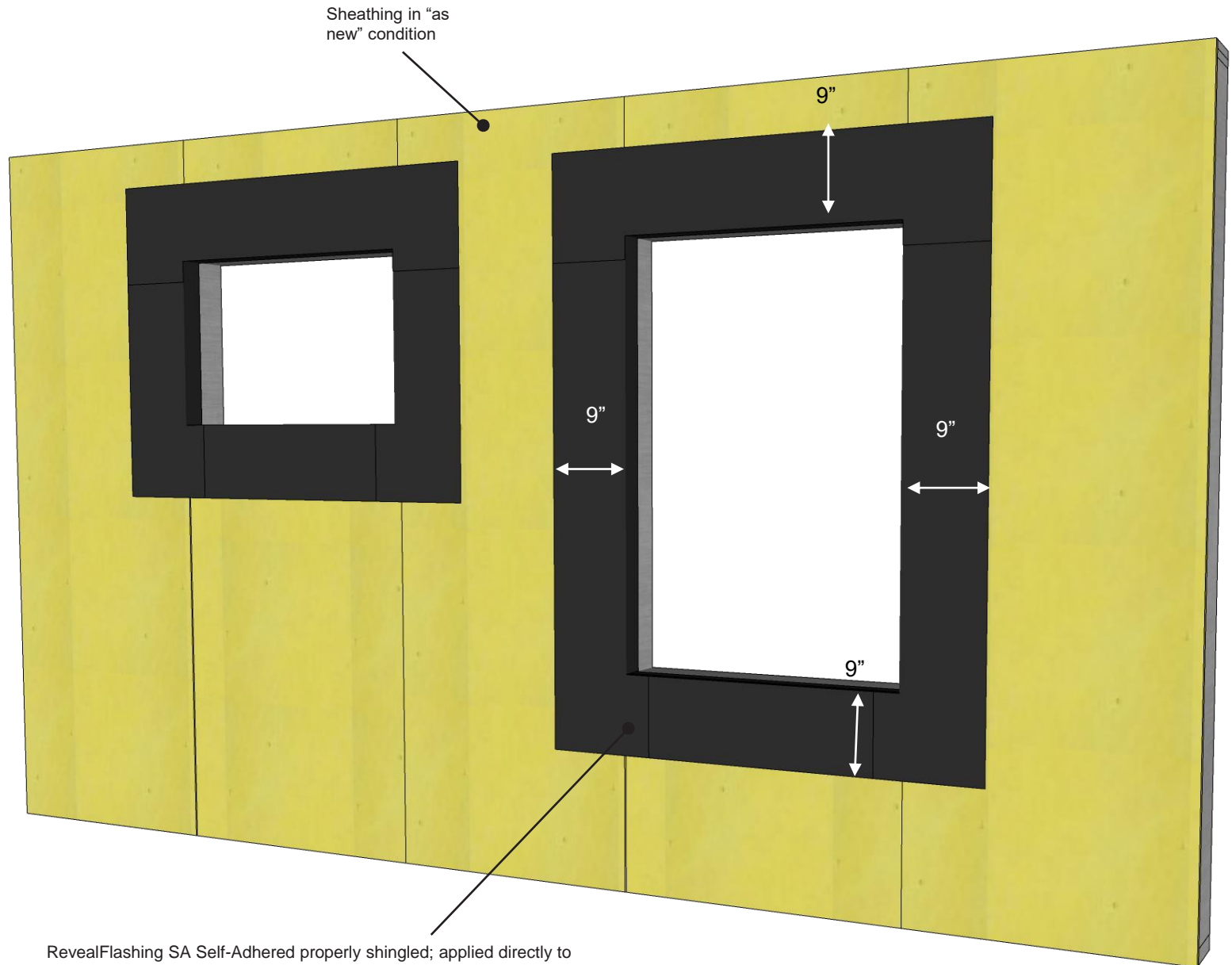
DISCLAIMER

Detail sketch is generic, representing suggested best practices for VaproShield materials, and does not represent a specific job site condition and therefore may not be applicable to certain projects. Detail sketch is designed for use as a reference and must be approved by the designer/ consultant of record for each project prior to installation by the subcontractor. Changes and approvals of VaproShield details are the sole responsibility of the designer/consultant of record. VaproShield is **not** the designer of record for building enclosure details and takes no responsibility for the accuracy or interpretation of actual project site conditions.

Always check www.VaproShield.com for the latest details and installation instructions

VaproShield LLC
915 26th Ave. N.W. Suite C5
Gig Harbor, WA 98335
Toll Free: 1.866.731.7663
www.VaproShield.com
© VaproShield 3/15/2016

VaproShield Canada
101-1001 West Broadway Suite 545
Vancouver, B.C. V6H 4E4, Canada
Toll Free: 1.866.871.8263
www.VaproShield.ca



RevealFlashing SA Self-Adhered properly shingled; applied directly to sheathing + folded 2.75" (70 mm) inside of R.O.

Note: Total of 11.75" (298.5 mm) of flashing should be used:

- 9" (228.6 mm) of flashing should be left on the face of the sheathing
- 6" (152.4 mm) of release film from the bottom of the flashing to be left attached for shingling over membrane.

PRODUCT DESCRIPTION

PanelShield SA Self-Adhered is a self-adhered, water resistive vapor permeable air barrier sheet membrane.

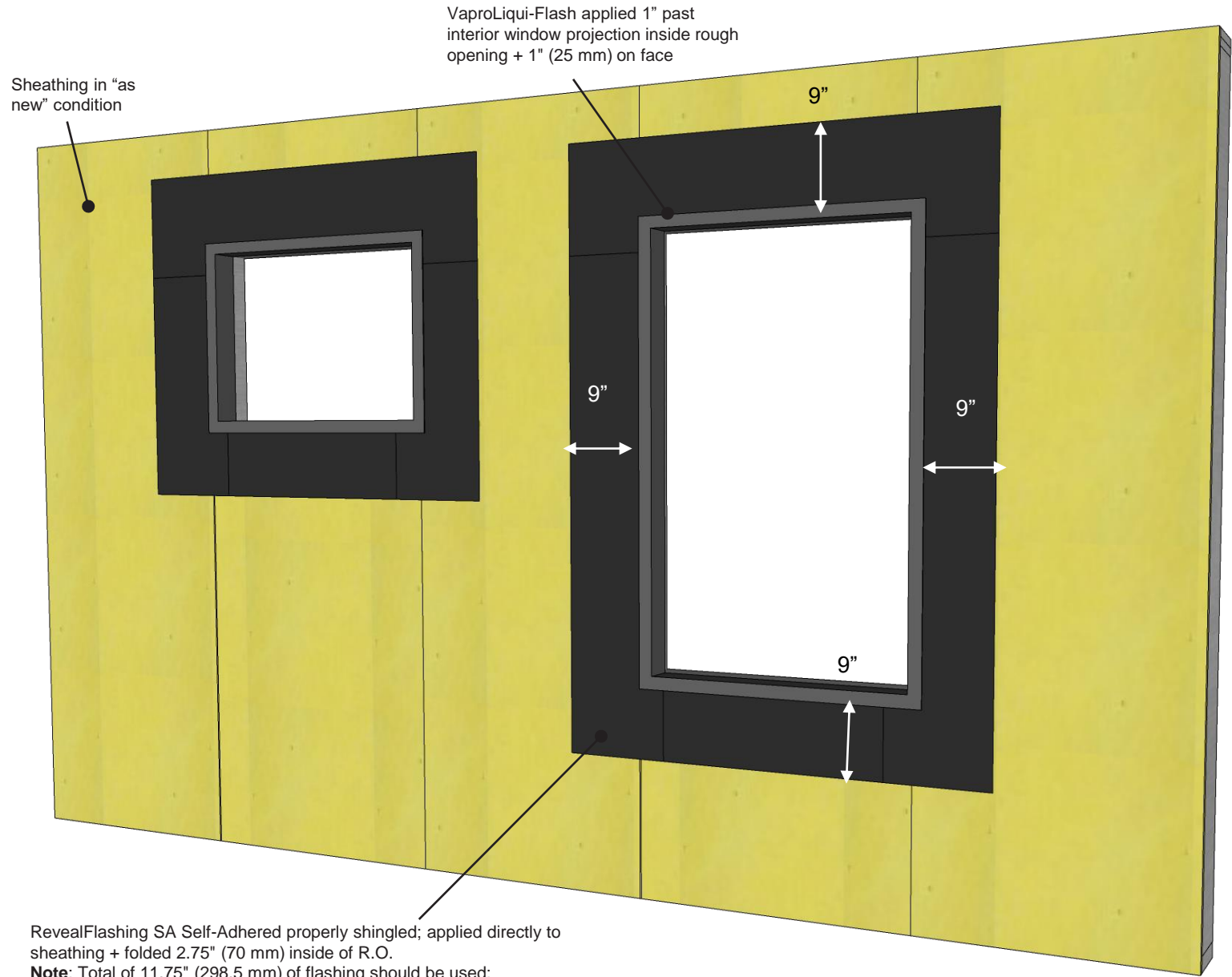
DISCLAIMER

Detail sketch is generic, representing suggested best practices for VaproShield materials, and does not represent a specific job site condition and therefore may not be applicable to certain projects. Detail sketch is designed for use as a reference and must be approved by the designer/ consultant of record for each project prior to installation by the subcontractor. Changes and approvals of VaproShield details are the sole responsibility of the designer/consultant of record. VaproShield is **not** the designer of record for building enclosure details and takes no responsibility for the accuracy or interpretation of actual project site conditions.

Always check www.VaproShield.com for the latest details and installation instructions

VaproShield LLC
915 26th Ave. N.W. Suite C5
Gig Harbor, WA 98335
Toll Free: 1.866.731.7663
www.VaproShield.com
© VaproShield 3/15/2016

VaproShield Canada
101-1001 West Broadway Suite 545
Vancouver, B.C. V6H 4E4, Canada
Toll Free: 1.866.871.8263
www.VaproShield.ca



RevealFlashing SA Self-Adhered properly shingled; applied directly to sheathing + folded 2.75" (70 mm) inside of R.O.

Note: Total of 11.75" (298.5 mm) of flashing should be used:

- 9" (228.6 mm) of flashing should be left on the face of the sheathing
- 6" (152.4 mm) of release film from the bottom of the flashing to be left attached for shingling over membrane.

PRODUCT DESCRIPTION

PanelShield SA Self-Adhered is a self-adhered, water resistive vapor permeable air barrier sheet membrane.

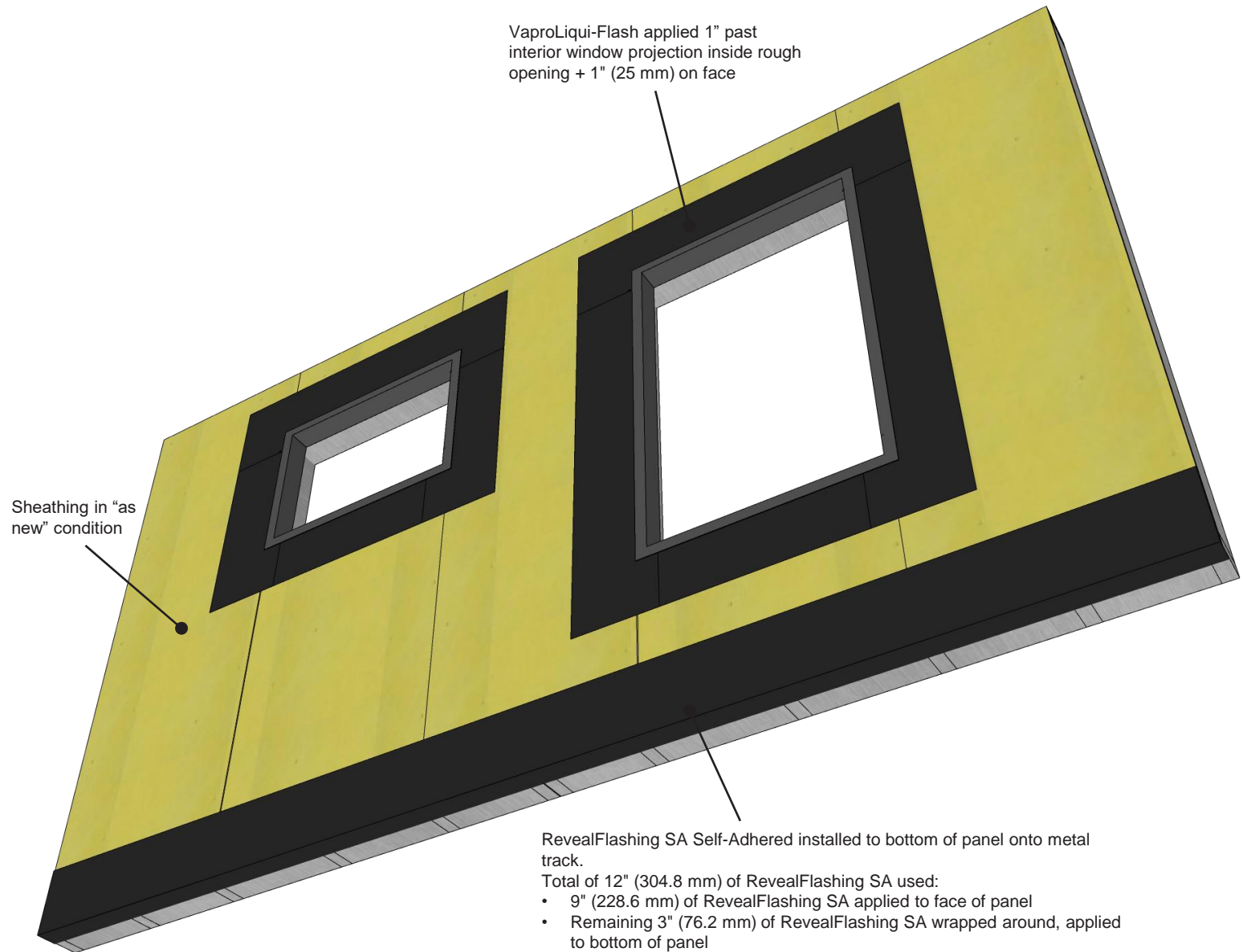
DISCLAIMER

Detail sketch is generic, representing suggested best practices for VaproShield materials, and does not represent a specific job site condition and therefore may not be applicable to certain projects. Detail sketch is designed for use as a reference and must be approved by the designer/ consultant of record for each project prior to installation by the subcontractor. Changes and approvals of VaproShield details are the sole responsibility of the designer/consultant of record. VaproShield is **not** the designer of record for building enclosure details and takes no responsibility for the accuracy or interpretation of actual project site conditions.

Always check www.VaproShield.com for the latest details and installation instructions

VaproShield LLC
915 26th Ave. N.W. Suite C5
Gig Harbor, WA 98335
Toll Free: 1.866.731.7663
www.VaproShield.com
© VaproShield 3/15/2016

VaproShield Canada
101-1001 West Broadway Suite 545
Vancouver, B.C. V6H 4E4, Canada
Toll Free: 1.866.871.8263
www.VaproShield.ca



VaproLiqui-Flash applied 1" past interior window projection inside rough opening + 1" (25 mm) on face

Sheathing in "as new" condition

RevealFlashing SA Self-Adhered installed to bottom of panel onto metal track.

Total of 12" (304.8 mm) of RevealFlashing SA used:

- 9" (228.6 mm) of RevealFlashing SA applied to face of panel
- Remaining 3" (76.2 mm) of RevealFlashing SA wrapped around, applied to bottom of panel

PRODUCT DESCRIPTION

PanelShield SA Self-Adhered is a self-adhered, water resistive vapor permeable air barrier sheet membrane.

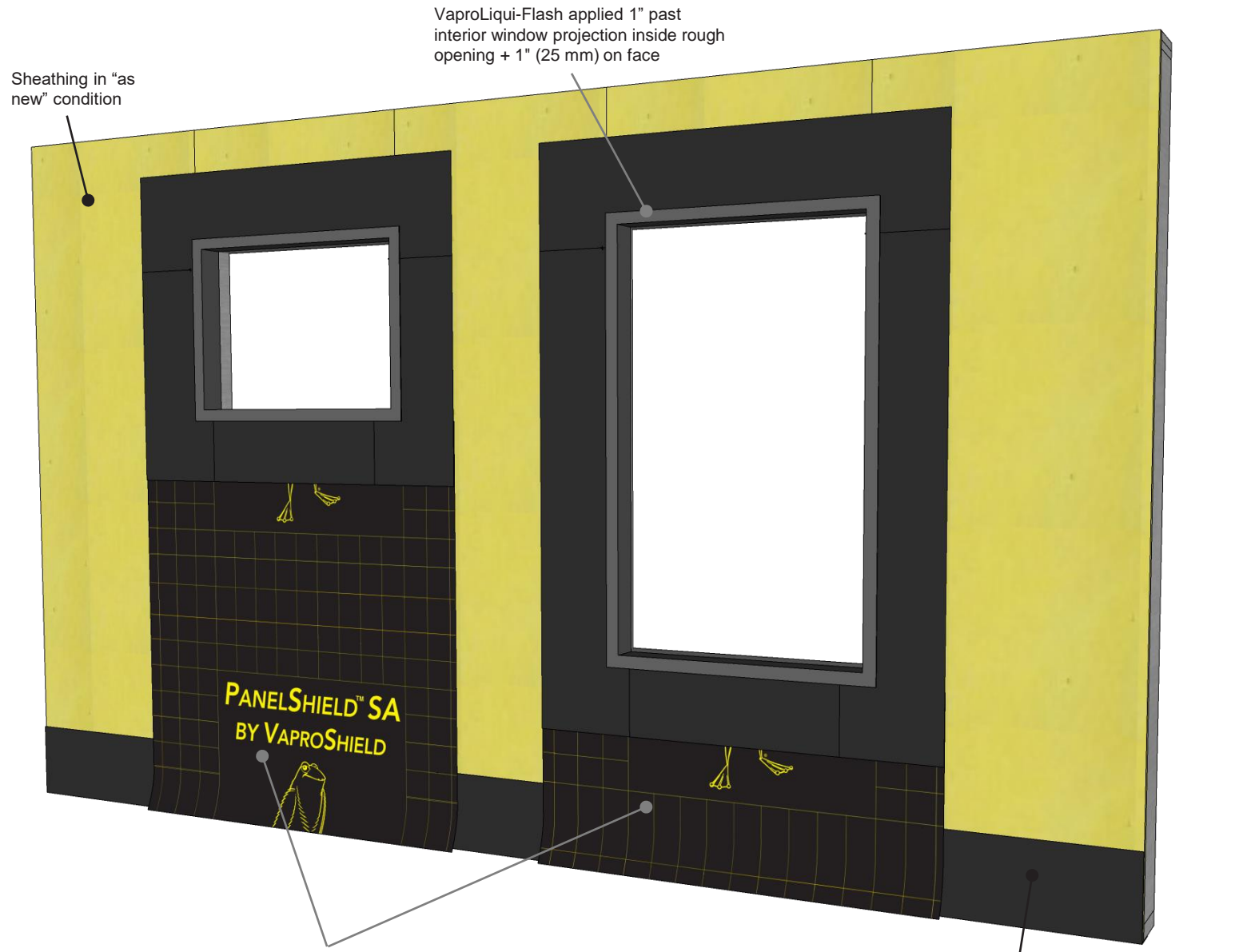
DISCLAIMER

Detail sketch is generic, representing suggested best practices for VaproShield materials, and does not represent a specific job site condition and therefore may not be applicable to certain projects. Detail sketch is designed for use as a reference and must be approved by the designer/ consultant of record for each project prior to installation by the subcontractor. Changes and approvals of VaproShield details are the sole responsibility of the designer/consultant of record. VaproShield is **not** the designer of record for building enclosure details and takes no responsibility for the accuracy or interpretation of actual project site conditions.

Always check www.VaproShield.com for the latest details and installation instructions

VaproShield LLC
915 26th Ave. N.W. Suite C5
Gig Harbor, WA 98335
Toll Free: 1.866.731.7663
www.VaproShield.com
© VaproShield 3/15/2016

VaproShield Canada
101-1001 West Broadway Suite 545
Vancouver, B.C. V6H 4E4, Canada
Toll Free: 1.866.871.8263
www.VaproShield.ca



PanelShield SA Self-Adhered field membrane installed underneath 6" (152.4 mm) flap of RevealFlashing SA to create shingle effect

Bottom 6" (152.4 mm) of release film left attached, leaving 6" (152.4 mm) flap of field membrane detached from panel

RevealFlashing SA Self-Adhered installed to bottom of panel onto metal track. Total of 12" (304.8 mm) of RevealFlashing SA used:

- 9" (228.6 mm) of RevealFlashing SA applied to face of panel
- Remaining 3" (76.2 mm) of RevealFlashing SA wrapped around, applied to bottom of panel

Panelized Construction: Factory Installation - Step 8

PRODUCT DESCRIPTION

PanelShield SA Self-Adhered is a self-adhered, water resistive vapor permeable air barrier sheet membrane.

DISCLAIMER

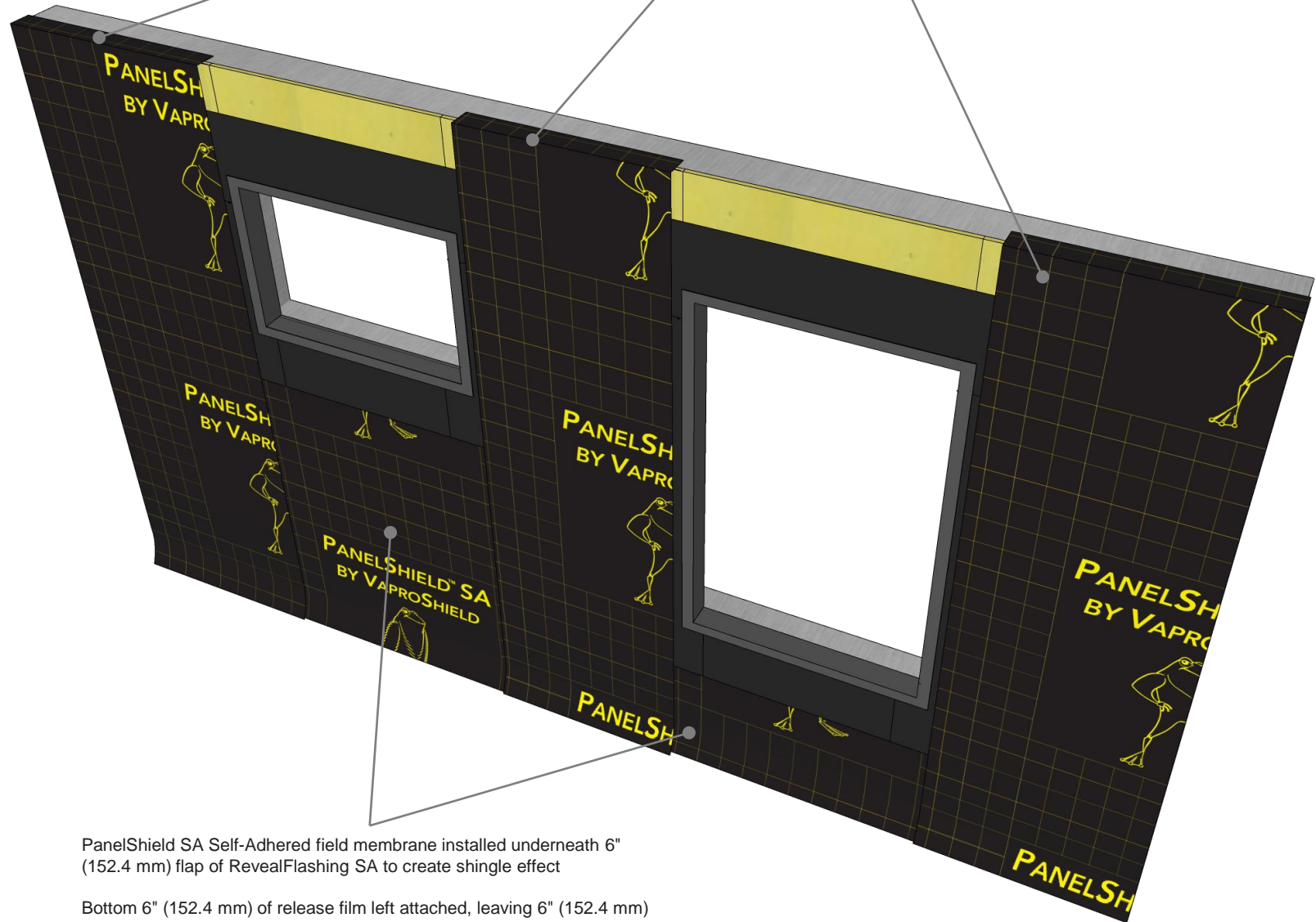
Detail sketch is generic, representing suggested best practices for VaproShield materials, and does not represent a specific job site condition and therefore may not be applicable to certain projects. Detail sketch is designed for use as a reference and must be approved by the designer/ consultant of record for each project prior to installation by the subcontractor. Changes and approvals of VaproShield details are the sole responsibility of the designer/consultant of record. VaproShield is **not** the designer of record for building enclosure details and takes no responsibility for the accuracy or interpretation of actual project site conditions.

Always check www.VaproShield.com for the latest details and installation instructions

VaproShield LLC
915 26th Ave. N.W. Suite C5
Gig Harbor, WA 98335
Toll Free: 1.866.731.7663
www.VaproShield.com
© VaproShield 3/15/2016

VaproShield Canada
101-1001 West Broadway Suite 545
Vancouver, B.C. V6H 4E4, Canada
Toll Free: 1.866.871.8263
www.VaproShield.ca

PanelShield SA Self-Adhered field membrane installed vertically with minimum 3" (76.2 mm) overlap
Bottom 6" (152.4 mm) of membrane are left detached with release film left intact
Membrane wraps around sides of panel onto metal studs and top of panel 3" (76.2 mm) onto metal track.



PanelShield SA Self-Adhered field membrane installed underneath 6" (152.4 mm) flap of RevealFlashing SA to create shingle effect

Bottom 6" (152.4 mm) of release film left attached, leaving 6" (152.4 mm) flap of field membrane detached from panel

Panelized Construction: Factory Installation - Step 9

PanelShield SA Self-Adhered field membrane installed above rough openings and folded 3" (76.2 mm) over the top of panel onto metal track. Leave bottom 6" (152.4 mm) of field membrane unattached with release film intact.

PRODUCT DESCRIPTION

PanelShield SA Self-Adhered is a self-adhered, water resistive vapor permeable air barrier sheet membrane.

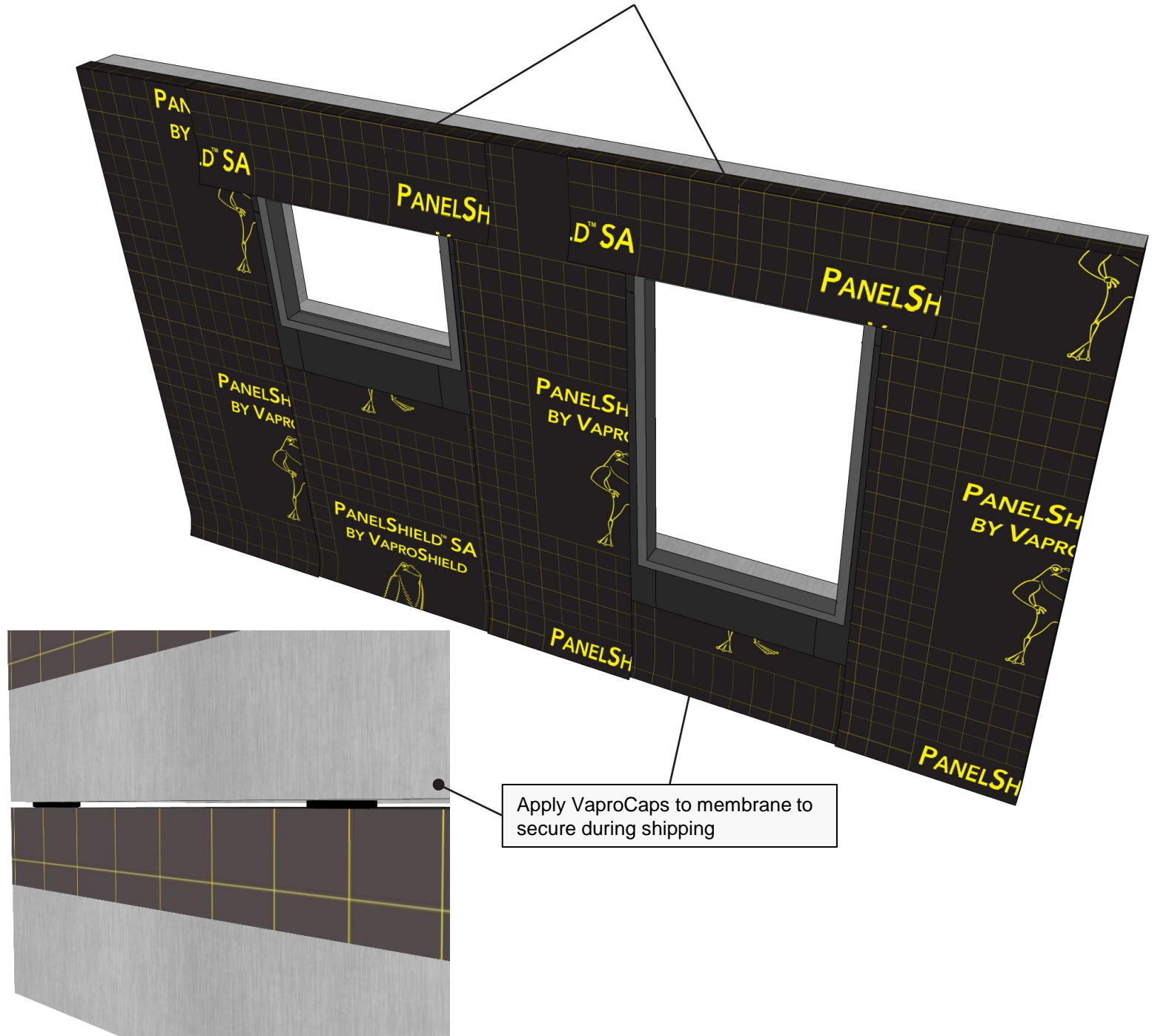
DISCLAIMER

Detail sketch is generic, representing suggested best practices for VaproShield materials, and does not represent a specific job site condition and therefore may not be applicable to certain projects. Detail sketch is designed for use as a reference and must be approved by the designer/ consultant of record for each project prior to installation by the subcontractor. Changes and approvals of VaproShield details are the sole responsibility of the designer/consultant of record. VaproShield is **not** the designer of record for building enclosure details and takes no responsibility for the accuracy or interpretation of actual project site conditions.

Always check www.VaproShield.com for the latest details and installation instructions

VaproShield LLC
915 26th Ave. N.W. Suite C5
Gig Harbor, WA 98335
Toll Free: 1.866.731.7663
www.VaproShield.com
© VaproShield 3/15/2016

VaproShield Canada
101-1001 West Broadway Suite 545
Vancouver, B.C. V6H 4E4, Canada
Toll Free: 1.866.871.8263
www.VaproShield.ca



Panelized Construction: Sequential Field Assembly Instructions Overview

Panelized construction in factory settings offers excellent economies of scale to the final installed cost of a WRB/AB material. Ease of access and controlled environmental conditions can drastically improve the quality of the installation. However, if the proper sequencing for a streamlined connection once the panels arrive onsite is not understood from the start, then any improvements in quality will not be realized and could lead to failure of the WRB/AB system.

Always check www.VaproShield.com for the latest details and installation instructions

Panels are trucked to the job site. During both Loading and unloading care **MUST BE TAKEN TO NOT DAMAGE THE PANELSHIELD MATERIAL!**



DISCLAIMER

Detail sketch is generic, representing suggested best practices for VaproShield materials, and does not represent a specific job site condition and therefore may not be applicable to certain projects. Detail sketch is designed for use as a reference and must be approved by the designer/consultant of record for each project prior to installation by the subcontractor. Changes and approvals of VaproShield details are the sole responsibility of the designer/consultant of record. VaproShield is **not** the designer of record for building enclosure details and takes no responsibility for the accuracy or interpretation of actual project site conditions.

Always check www.VaproShield.com for the latest details and installation instructions

Panels are easily installed to all floors with a crane

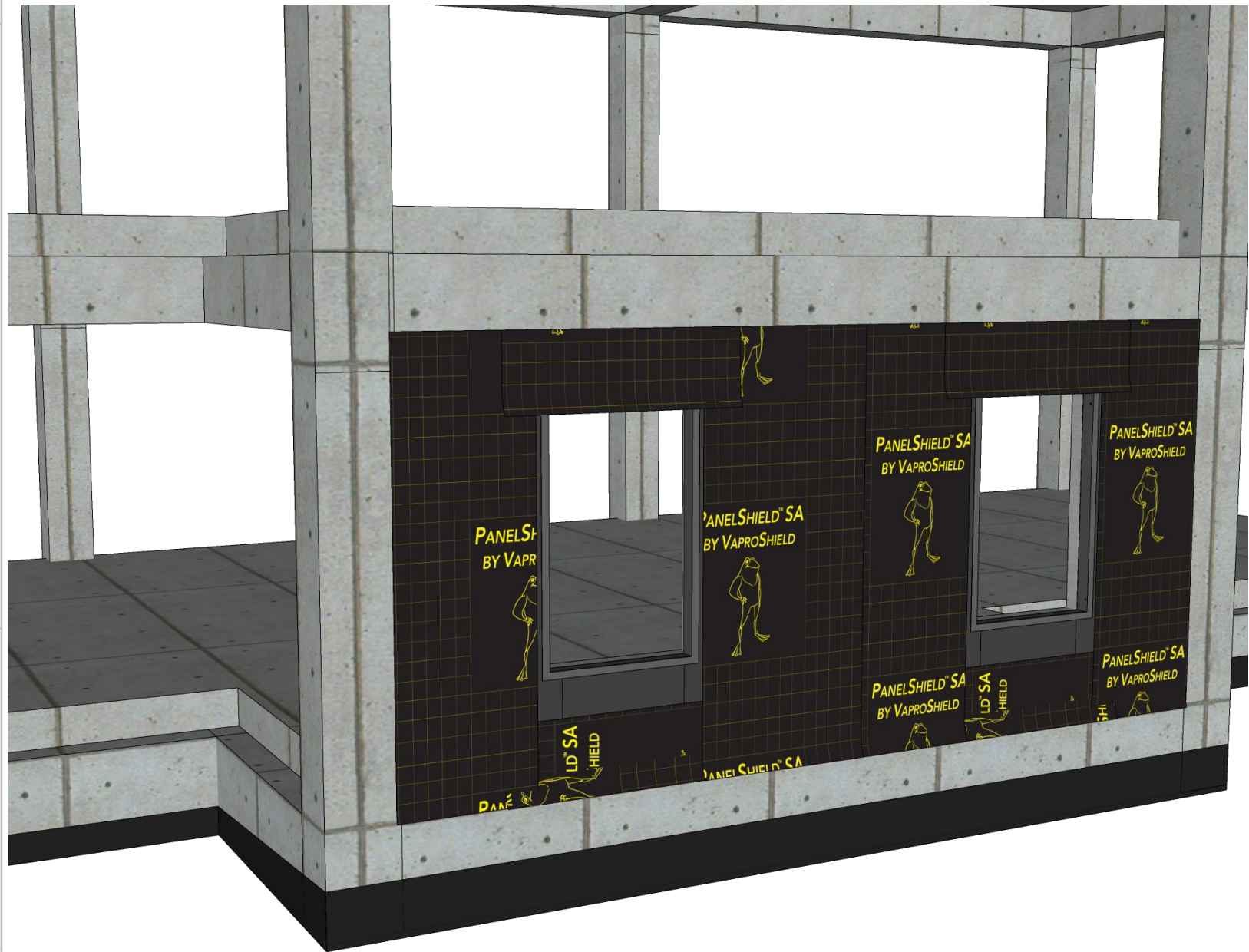


DISCLAIMER

Detail sketch is generic, representing suggested best practices for VaproShield materials, and does not represent a specific job site condition and therefore may not be applicable to certain projects. Detail sketch is designed for use as a reference and must be approved by the designer/ consultant of record for each project prior to installation by the subcontractor. Changes and approvals of VaproShield details are the sole responsibility of the designer/consultant of record. VaproShield is **not** the designer of record for building enclosure details and takes no responsibility for the accuracy or interpretation of actual project site conditions.

Always check www.VaproShield.com for the latest details and installation instructions

Place fully wrapped panel into place

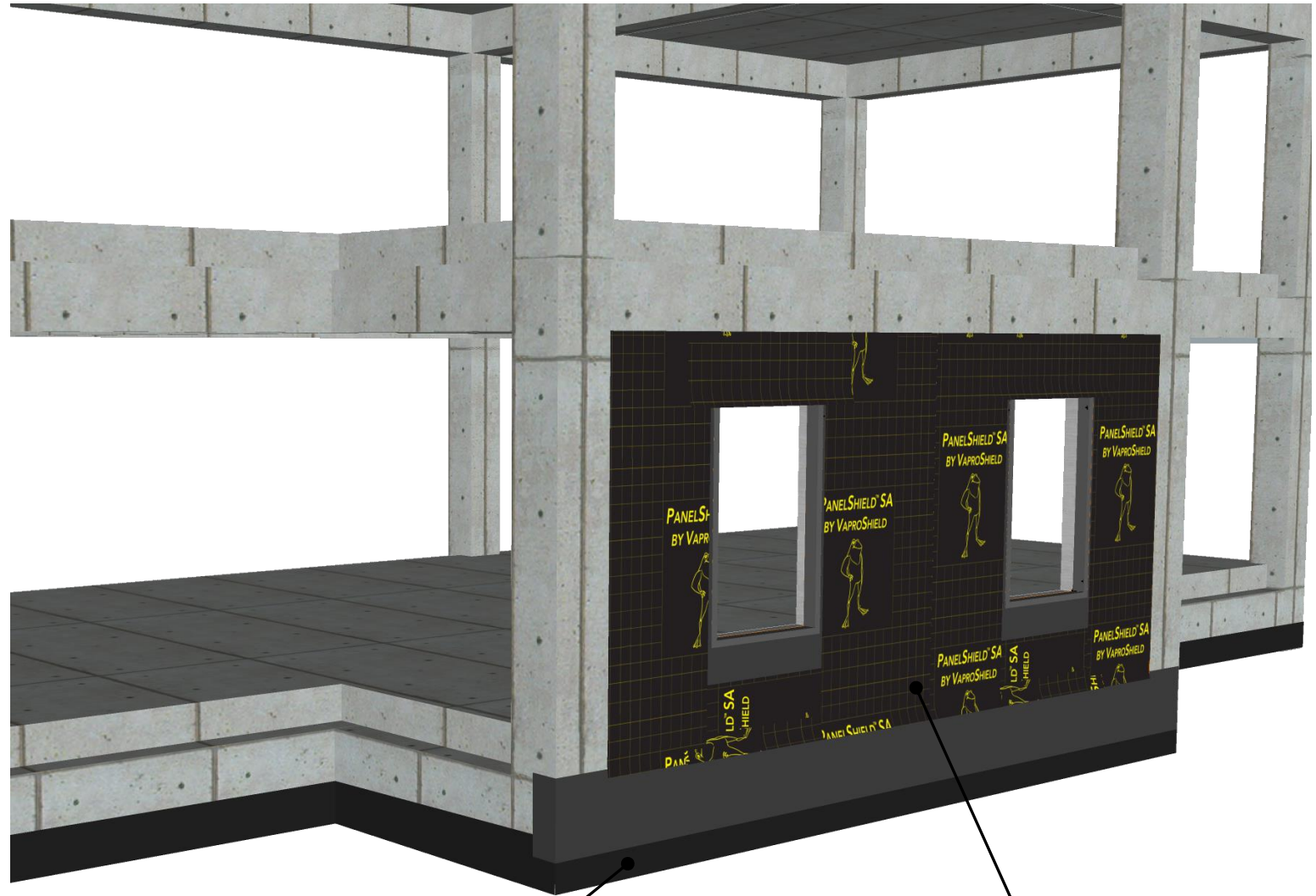


DISCLAIMER

Detail sketch is generic, representing suggested best practices for VaproShield materials, and does not represent a specific job site condition and therefore may not be applicable to certain projects. Detail sketch is designed for use as a reference and must be approved by the designer/consultant of record for each project prior to installation by the subcontractor. Changes and approvals of VaproShield details are the sole responsibility of the designer/consultant of record. VaproShield is **not** the designer of record for building enclosure details and takes no responsibility for the accuracy or interpretation of actual project site conditions.

Always check www.VaproShield.com for the latest details and installation instructions

RevealFlashing SA installs under material left unattached at bottom of panel



DISCLAIMER

Detail sketch is generic, representing suggested best practices for VaproShield materials, and does not represent a specific job site condition and therefore may not be applicable to certain projects. Detail sketch is designed for use as a reference and must be approved by the designer/consultant of record for each project prior to installation by the subcontractor. Changes and approvals of VaproShield details are the sole responsibility of the designer/consultant of record. VaproShield is **not** the designer of record for building enclosure details and takes no responsibility for the accuracy or interpretation of actual project site conditions.

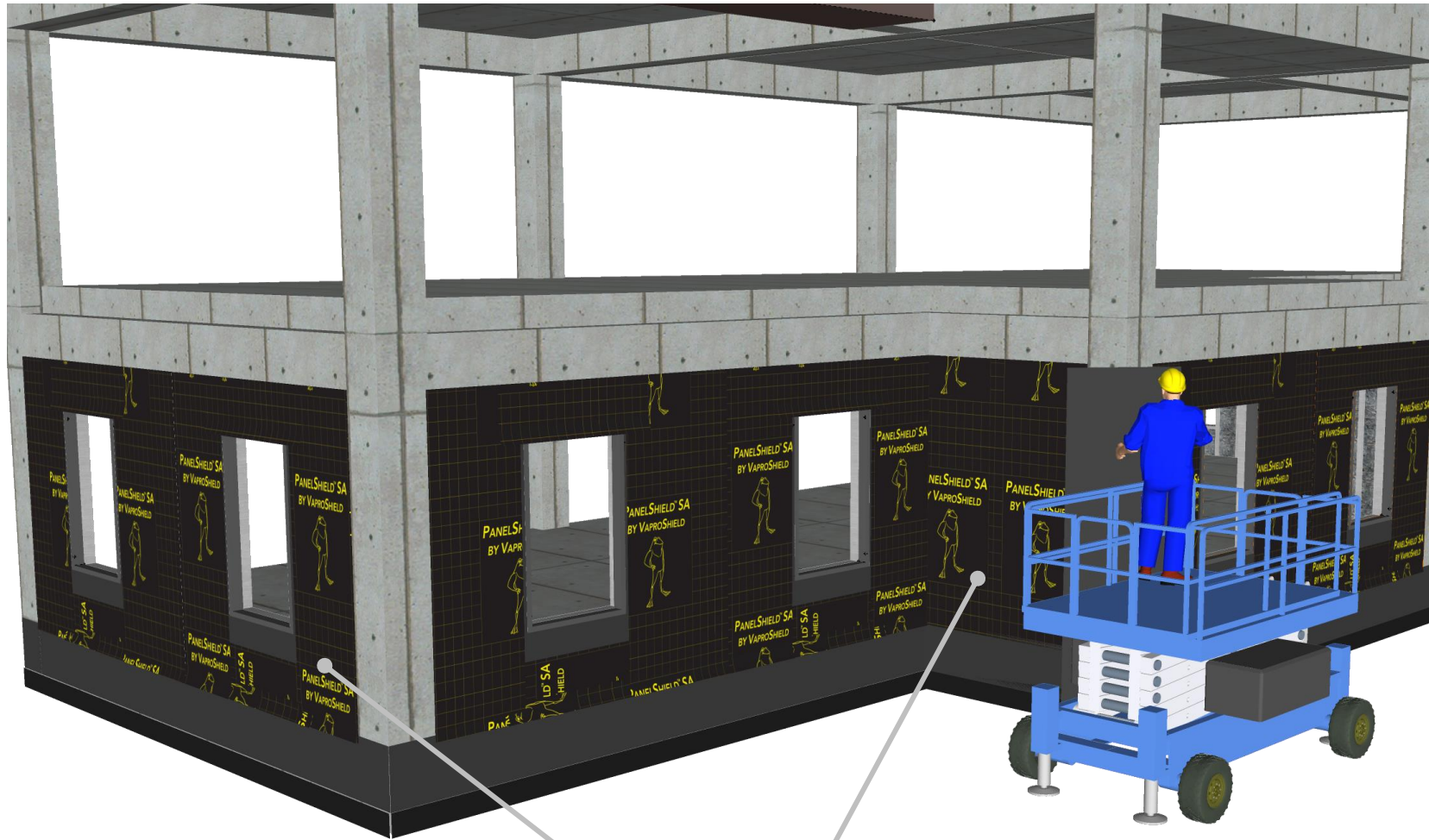
Always check www.VaproShield.com for the latest details and installation instructions

VaproShield LLC
915 26th Ave. N.W. Suite C5
Gig Harbor, WA 98335
Toll Free: 1.866.731.7663
www.VaproShield.com
© VaproShield 3/15/2016

RevealFlashing SA installed beneath detached field membrane, properly shingled (release film left attached on bottom 6" of field membrane, as per Factory Installation best practices)

RevealFlashing SA installed at vertical seams

Fill in bottom floor with panels, installing RevealFlashing SA around entire base of building



DISCLAIMER

Detail sketch is generic, representing suggested best practices for VaproShield materials, and does not represent a specific job site condition and therefore may not be applicable to certain projects. Detail sketch is designed for use as a reference and must be approved by the designer/ consultant of record for each project prior to installation by the subcontractor. Changes and approvals of VaproShield details are the sole responsibility of the designer/consultant of record. VaproShield is **not** the designer of record for building enclosure details and takes no responsibility for the accuracy or interpretation of actual project site conditions.

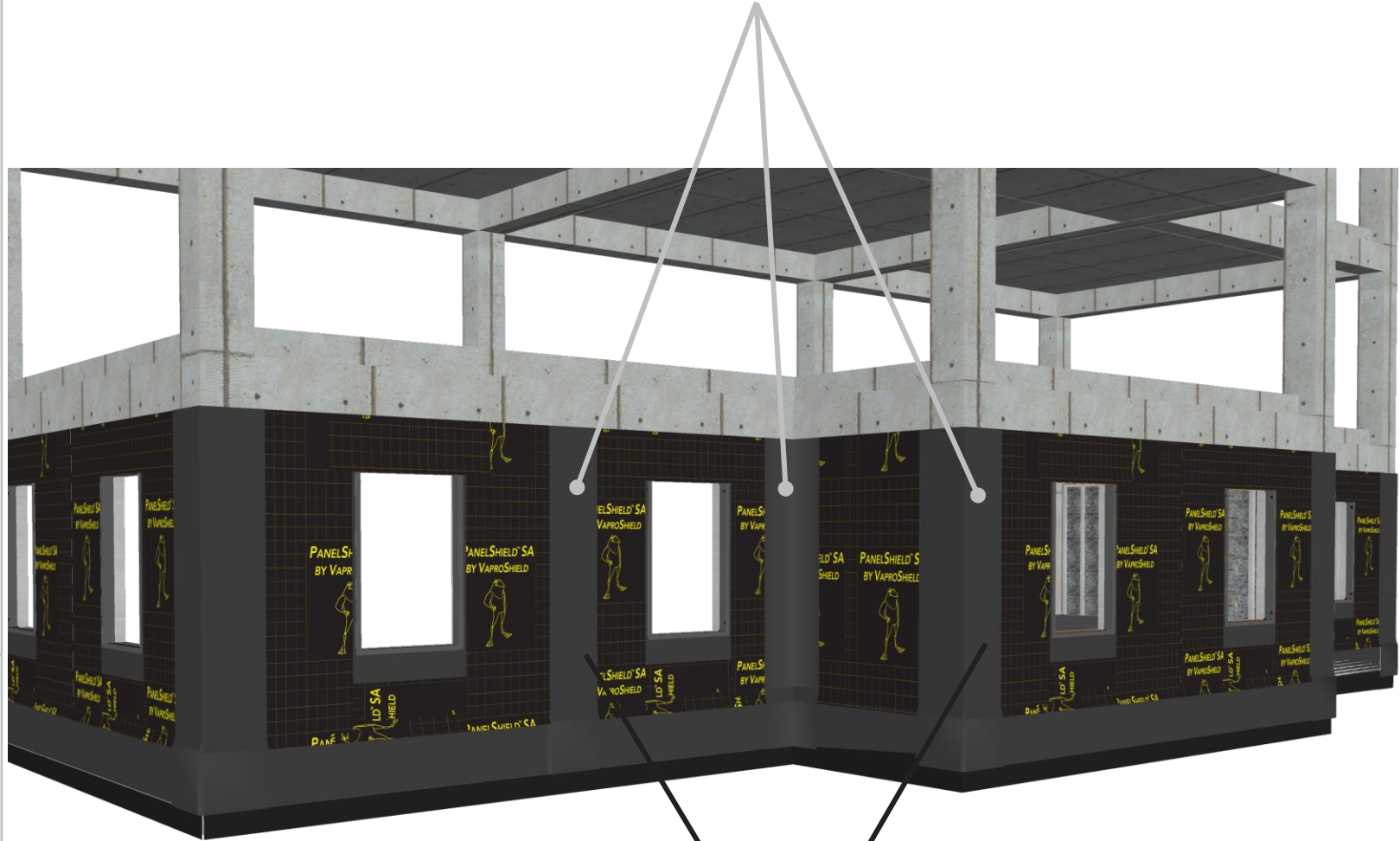
Always check www.VaproShield.com for the latest details and installation instructions

VaproShield LLC
915 26th Ave. N.W. Suite C5
Gig Harbor, WA 98335
Toll Free: 1.866.731.7663
www.VaproShield.com
© VaproShield 3/15/2016

Fill in 1st floor of building with panels, install RevealFlashing SA beneath bottom flap of field membrane with bottom 6" of release film attached

Cover inside and outside corners and ALL vertical seams with RevealFlashing SA, which spans corners and seams, and can be installed by one person

RevealFlashing SA installed on inside and outside corners and ALL VERTICAL SEAMS with minimum 6" overlap onto panel



DISCLAIMER

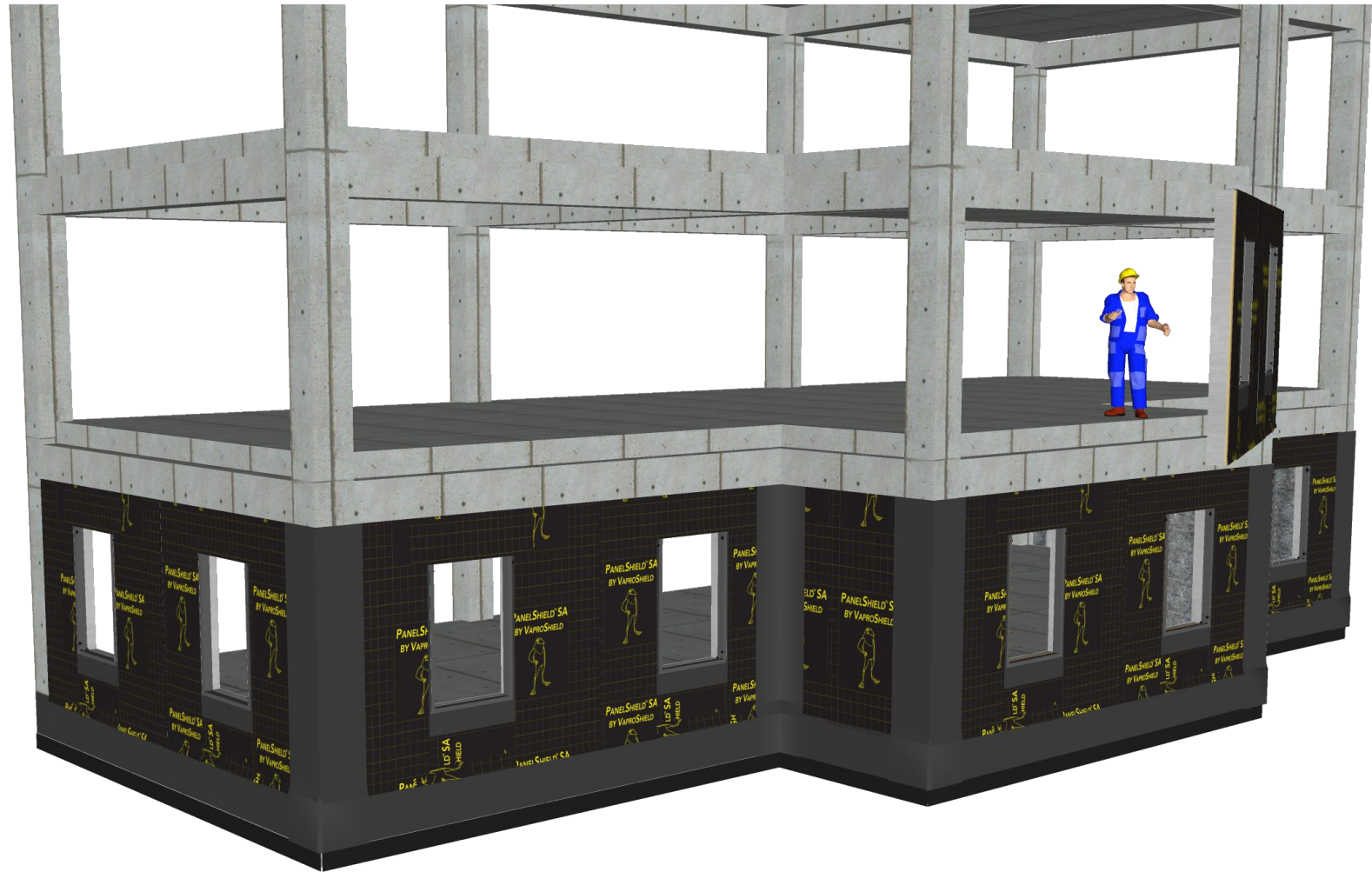
Detail sketch is generic, representing suggested best practices for VaproShield materials, and does not represent a specific job site condition and therefore may not be applicable to certain projects. Detail sketch is designed for use as a reference and must be approved by the designer/consultant of record for each project prior to installation by the subcontractor. Changes and approvals of VaproShield details are the sole responsibility of the designer/consultant of record. VaproShield is **not** the designer of record for building enclosure details and takes no responsibility for the accuracy or interpretation of actual project site conditions.

Always check www.VaproShield.com for the latest details and installation instructions

VaproShield LLC
915 26th Ave. N.W. Suite C5
Gig Harbor, WA 98335
Toll Free: 1.866.731.7663
www.VaproShield.com
© VaproShield 3/15/2016

VaproShield membranes are designed to be installed with minimal labor and no special tools

Install 2nd floor panels, then install RevealFlashing SA underneath upper course and shingled over lower course to create shingle effect



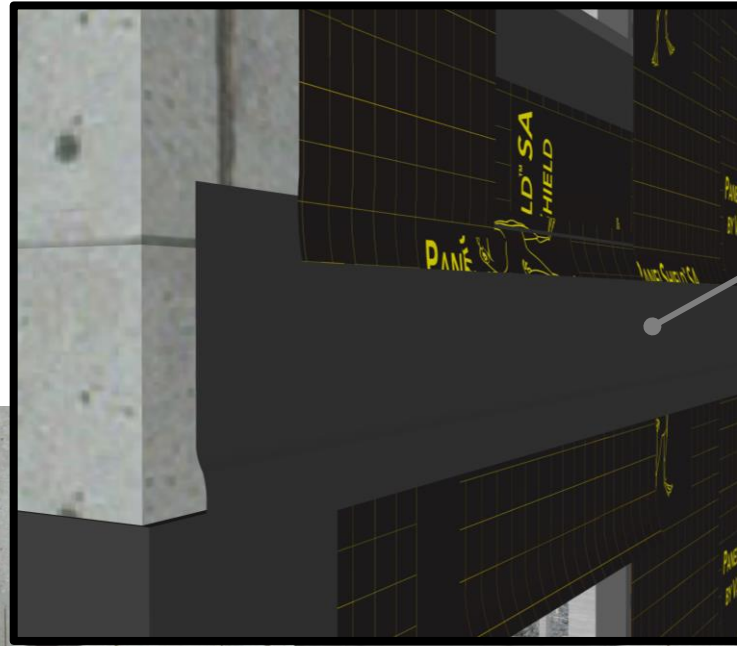
DISCLAIMER

Detail sketch is generic, representing suggested best practices for VaproShield materials, and does not represent a specific job site condition and therefore may not be applicable to certain projects. Detail sketch is designed for use as a reference and must be approved by the designer/ consultant of record for each project prior to installation by the subcontractor. Changes and approvals of VaproShield details are the sole responsibility of the designer/consultant of record. VaproShield is **not** the designer of record for building enclosure details and takes no responsibility for the accuracy or interpretation of actual project site conditions.

Always check www.VaproShield.com for the latest details and installation instructions

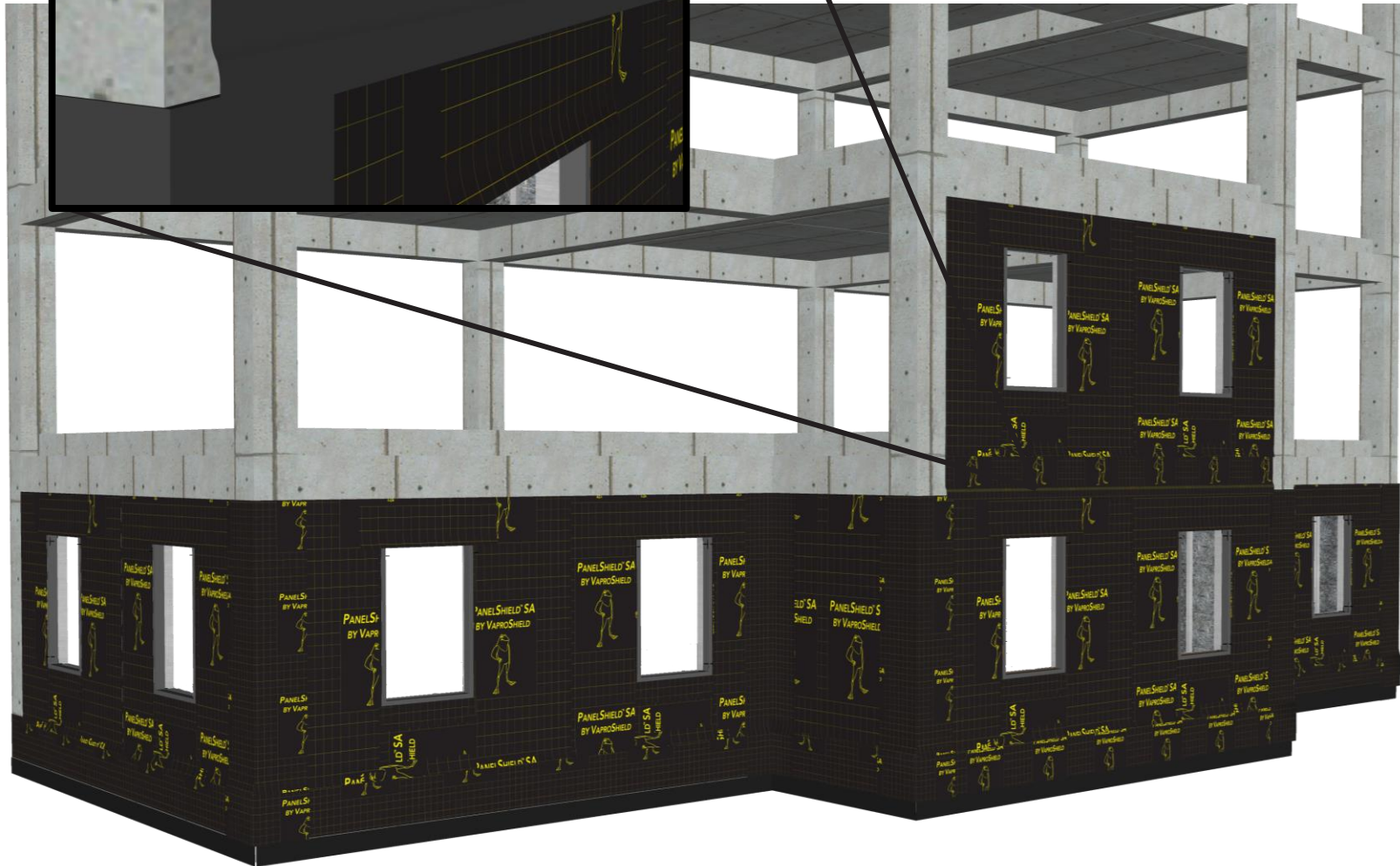
Panelized Construction: Sequential Field Assembly Instructions Overview

Install 2nd floor panels, then install RevealFlashing SA underneath upper course and shingled over lower course to create shingle effect



RevealFlashing SA installed underneath unattached field membrane on bottom of 2nd story panel

RevealFlashing SA overlaps the top 6" of first floor panel



DISCLAIMER

Detail sketch is generic, representing suggested best practices for VaproShield materials, and does not represent a specific job site condition and therefore may not be applicable to certain projects. Detail sketch is designed for use as a reference and must be approved by the designer/ consultant of record for each project prior to installation by the subcontractor. Changes and approvals of VaproShield details are the sole responsibility of the designer/consultant of record. VaproShield is **not** the designer of record for building enclosure details and takes no responsibility for the accuracy or interpretation of actual project site conditions.

Always check www.VaproShield.com for the latest details and installation instructions

Install 2nd floor panels, then install RevealFlashing SA underneath upper course and shingled over lower course to create shingle effect

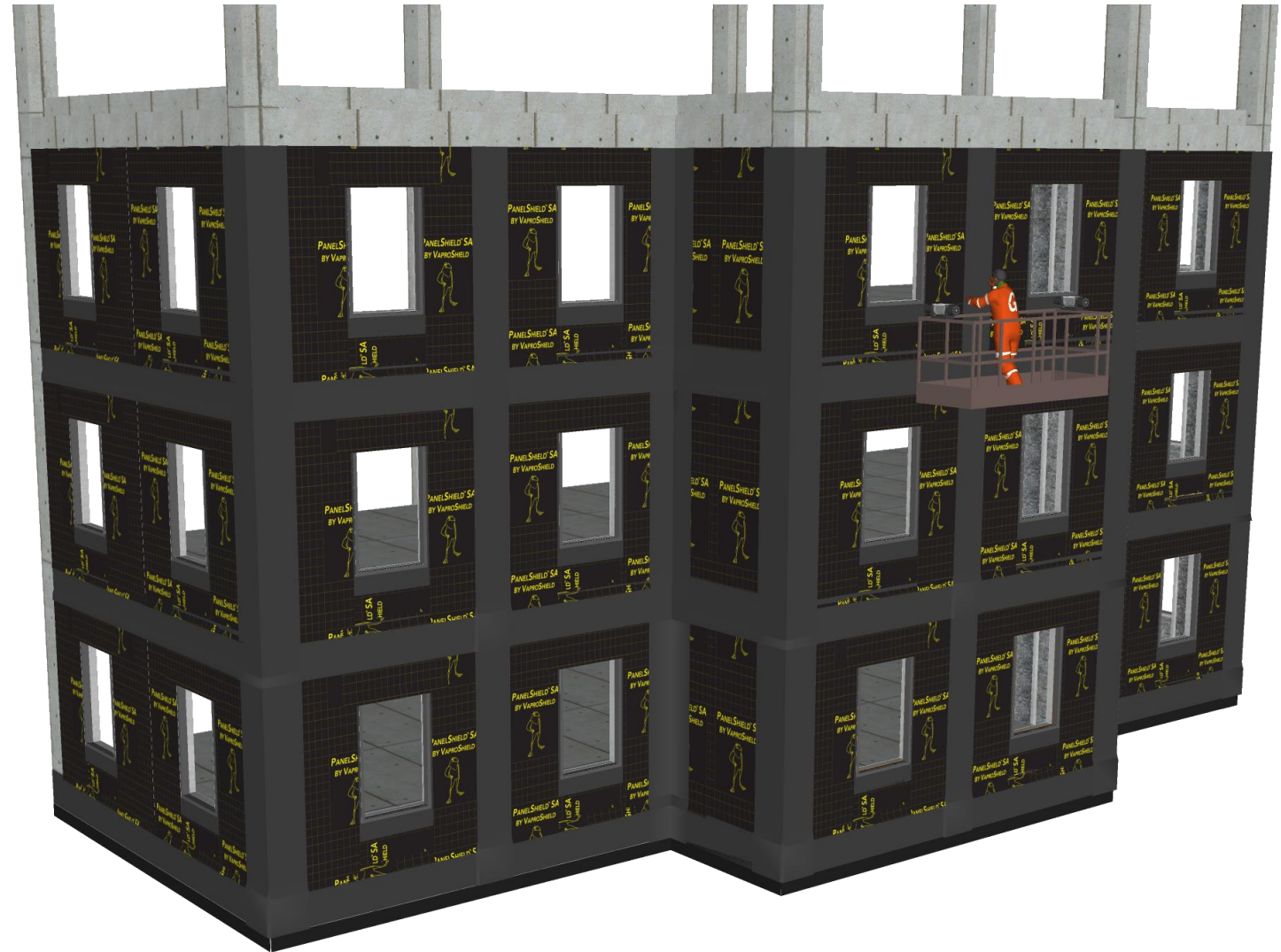


DISCLAIMER

Detail sketch is generic, representing suggested best practices for VaproShield materials, and does not represent a specific job site condition and therefore may not be applicable to certain projects. Detail sketch is designed for use as a reference and must be approved by the designer/consultant of record for each project prior to installation by the subcontractor. Changes and approvals of VaproShield details are the sole responsibility of the designer/consultant of record. VaproShield is **not** the designer of record for building enclosure details and takes no responsibility for the accuracy or interpretation of actual project site conditions.

Always check www.VaproShield.com for the latest details and installation instructions

Continue filling in above floors, using
RevealFlashing SA to
shingle between floors



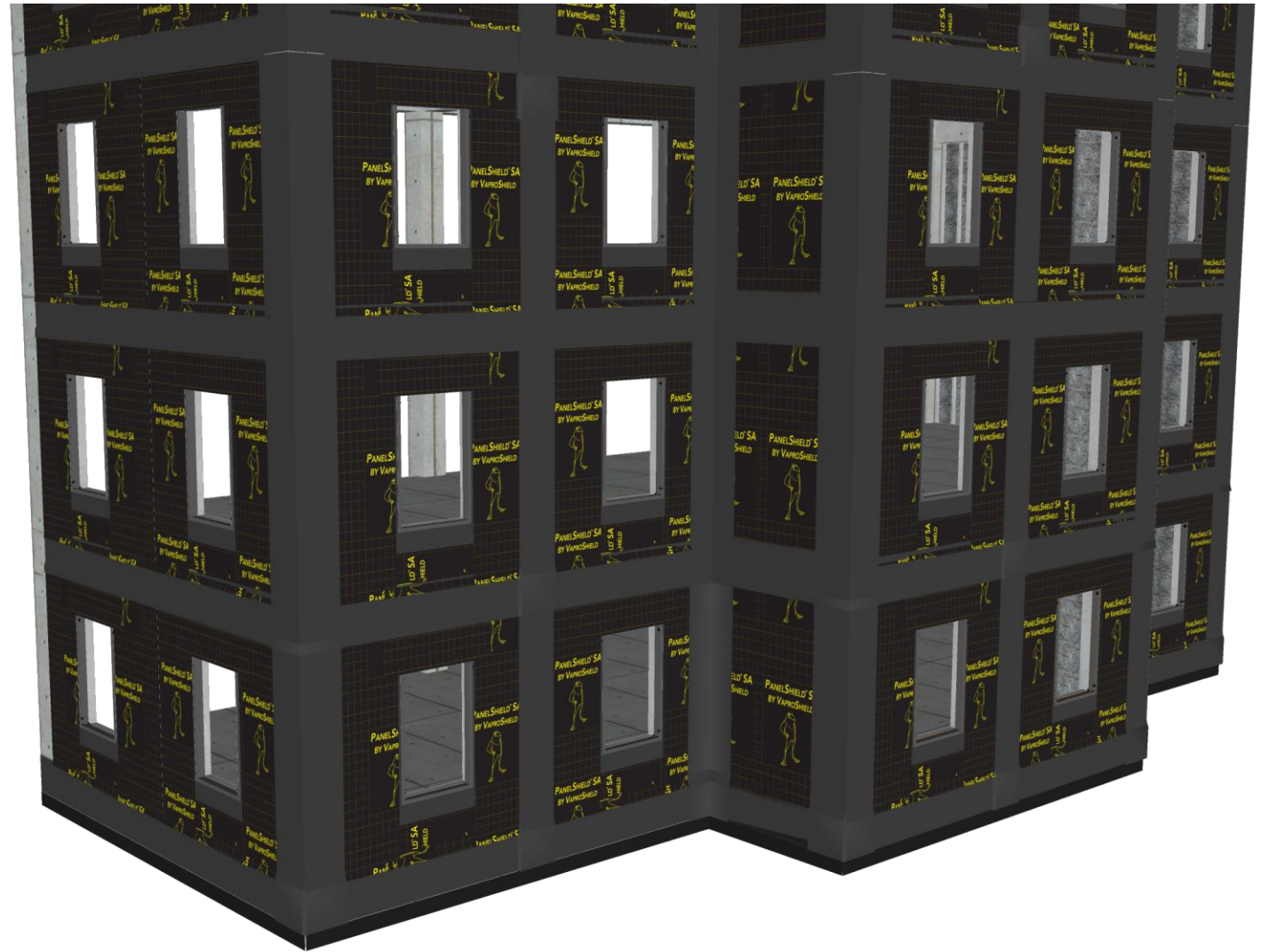
DISCLAIMER

Detail sketch is generic, representing suggested best practices for VaproShield materials, and does not represent a specific job site condition and therefore may not be applicable to certain projects. Detail sketch is designed for use as a reference and must be approved by the designer/consultant of record for each project prior to installation by the subcontractor. Changes and approvals of VaproShield details are the sole responsibility of the designer/consultant of record. VaproShield is **not** the designer of record for building enclosure details and takes no responsibility for the accuracy or interpretation of actual project site conditions.

Always check www.VaproShield.com for the latest details and installation instructions

VaproShield LLC
915 26th Ave. N.W. Suite C5
Gig Harbor, WA 98335
Toll Free: 1.866.731.7663
www.VaproShield.com
© VaproShield 3/15/2016

Continue filling in above floors, using
RevealFlashing SA to
shingle between floors



DISCLAIMER

Detail sketch is generic, representing suggested best practices for VaproShield materials, and does not represent a specific job site condition and therefore may not be applicable to certain projects. Detail sketch is designed for use as a reference and must be approved by the designer/ consultant of record for each project prior to installation by the subcontractor. Changes and approvals of VaproShield details are the sole responsibility of the designer/consultant of record. VaproShield is **not** the designer of record for building enclosure details and takes no responsibility for the accuracy or interpretation of actual project site conditions.

Always check www.VaproShield.com
for the latest details and installation
instructions

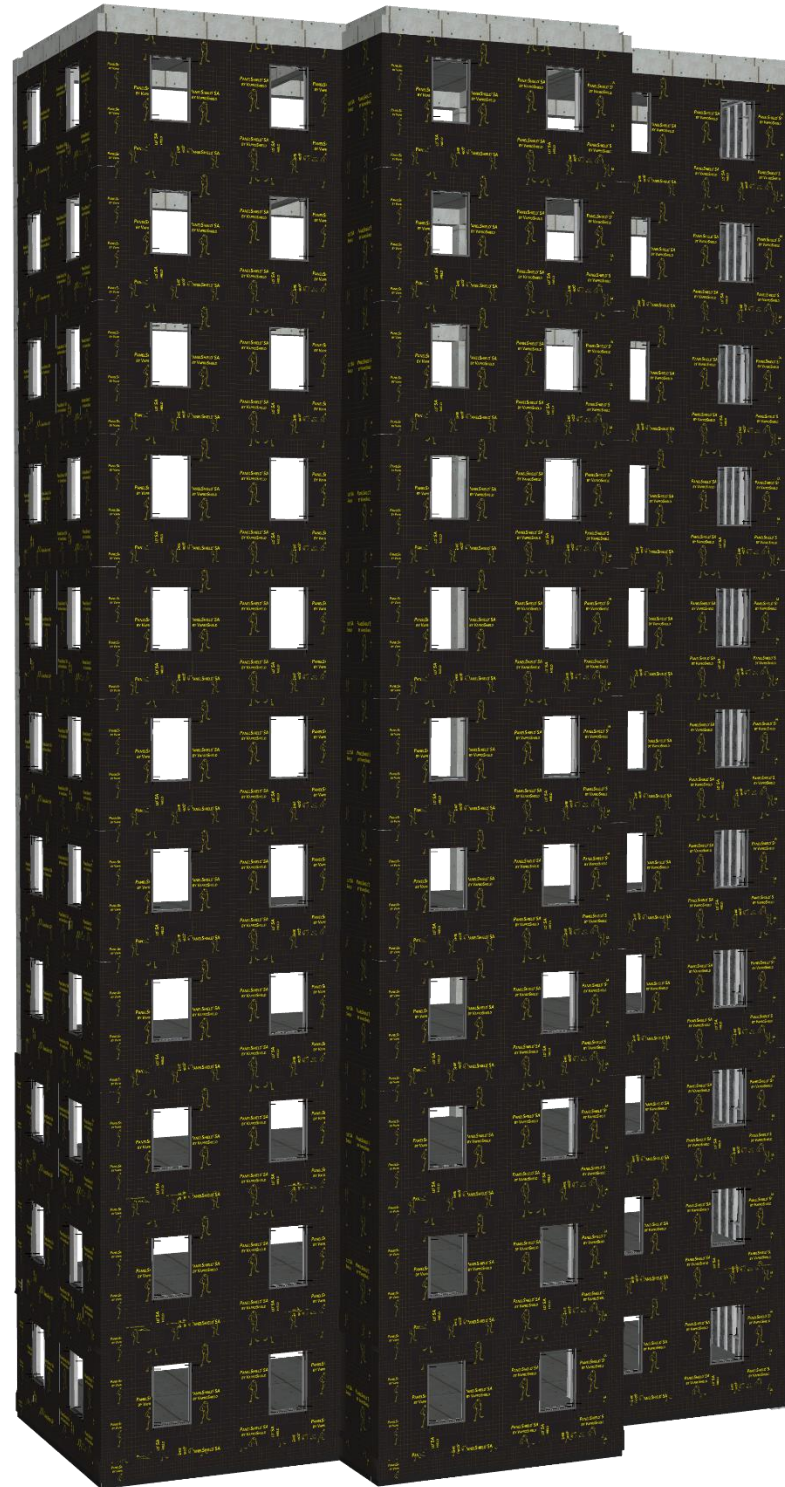
Panelized construction has no height constraints and saves time and labor

DISCLAIMER

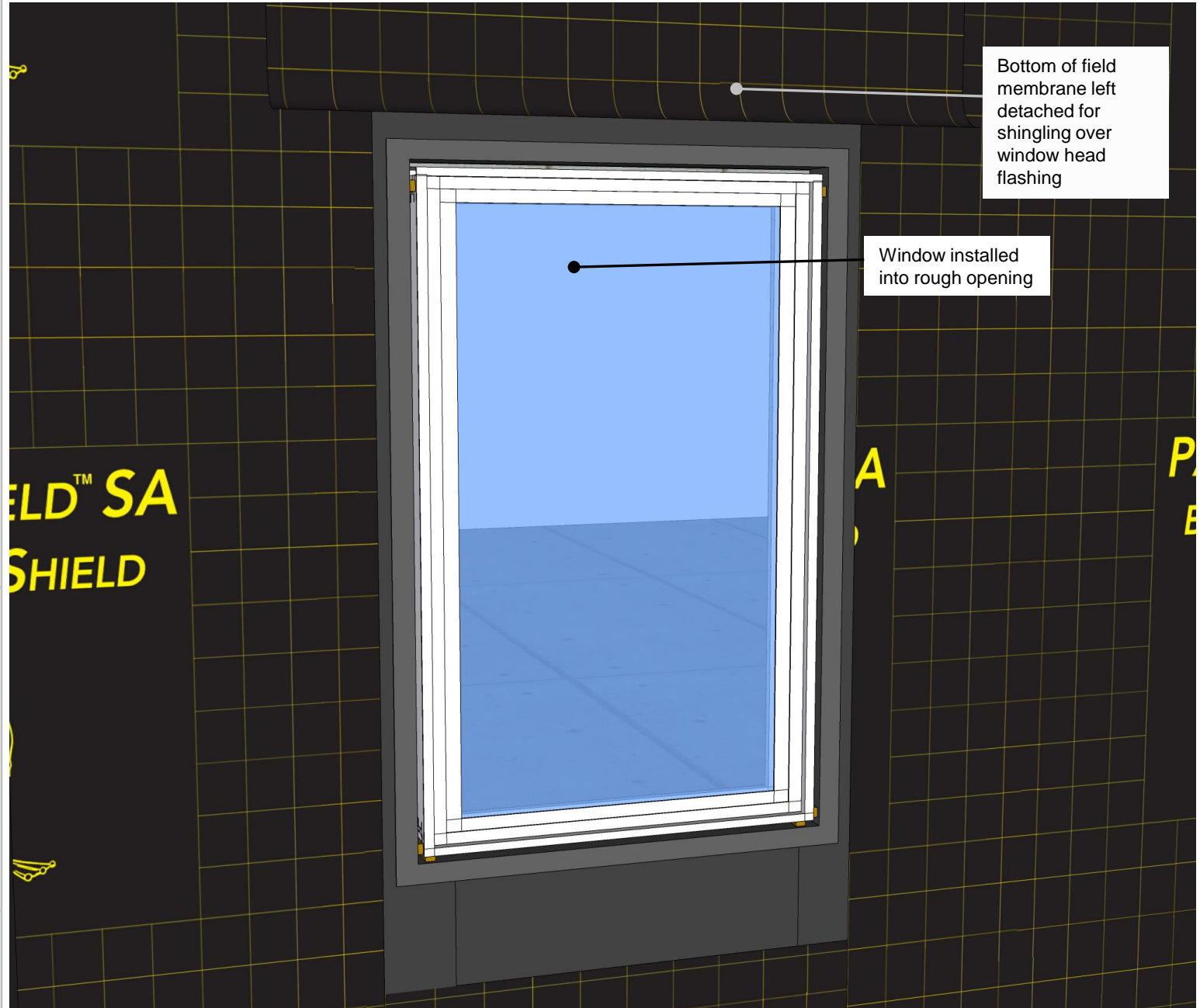
Detail sketch is generic, representing suggested best practices for VaproShield materials, and does not represent a specific job site condition and therefore may not be applicable to certain projects. Detail sketch is designed for use as a reference and must be approved by the designer/ consultant of record for each project prior to installation by the subcontractor. Changes and approvals of VaproShield details are the sole responsibility of the designer/consultant of record. VaproShield is **not** the designer of record for building enclosure details and takes no responsibility for the accuracy or interpretation of actual project site conditions.

Always check www.VaproShield.com for the latest details and installation instructions

VaproShield LLC
915 26th Ave. N.W. Suite C5
Gig Harbor, WA 98335
Toll Free: 1.866.731.7663
www.VaproShield.com
© VaproShield 3/15/2016



Place windows into
rough opening

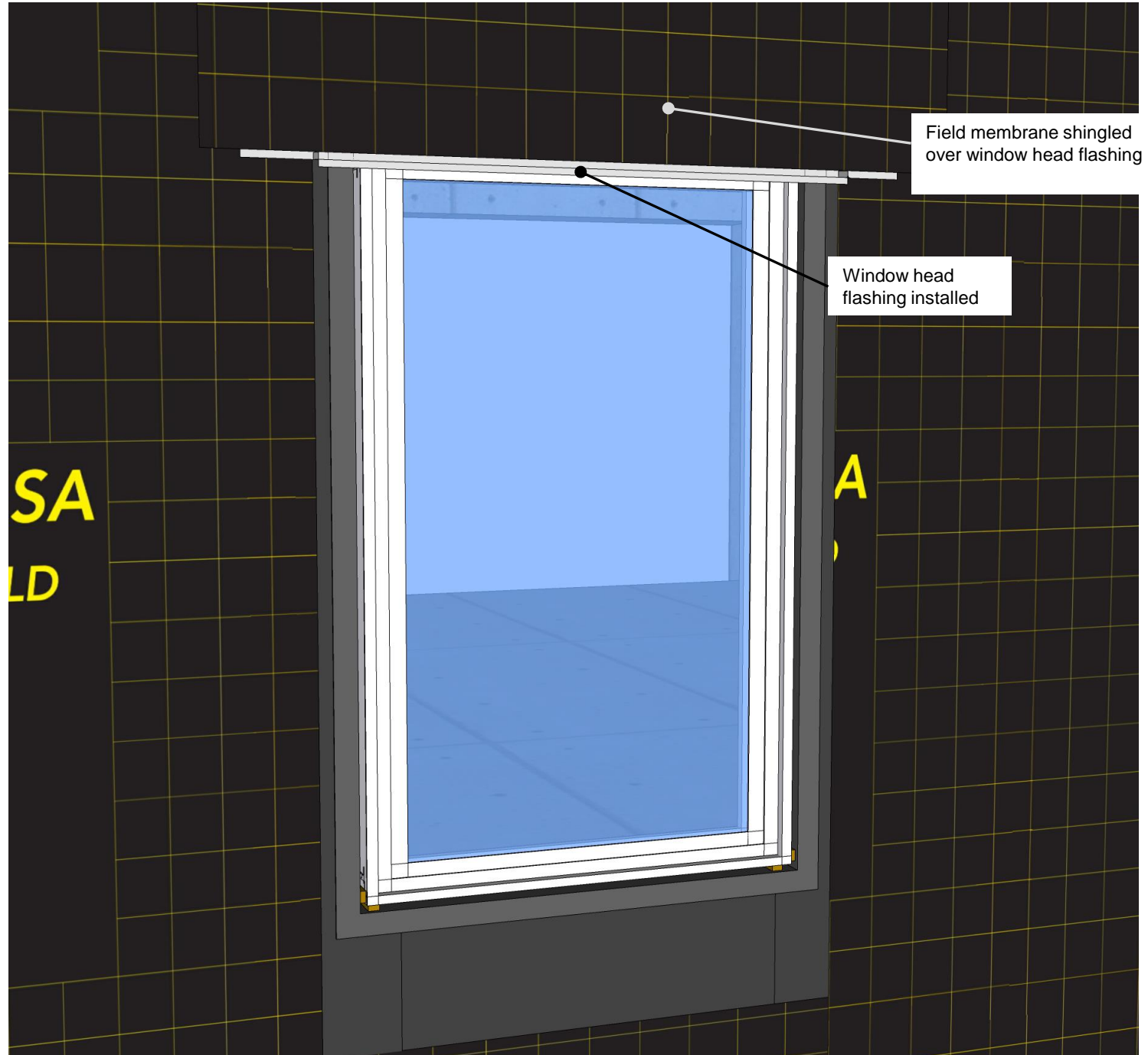


DISCLAIMER

Detail sketch is generic, representing suggested best practices for VaproShield materials, and does not represent a specific job site condition and therefore may not be applicable to certain projects. Detail sketch is designed for use as a reference and must be approved by the designer/consultant of record for each project prior to installation by the subcontractor. Changes and approvals of VaproShield details are the sole responsibility of the designer/consultant of record. VaproShield is **not** the designer of record for building enclosure details and takes no responsibility for the accuracy or interpretation of actual project site conditions.

Always check www.VaproShield.com
for the latest details and installation
instructions

Install head flashing and shingle over with detached field membrane

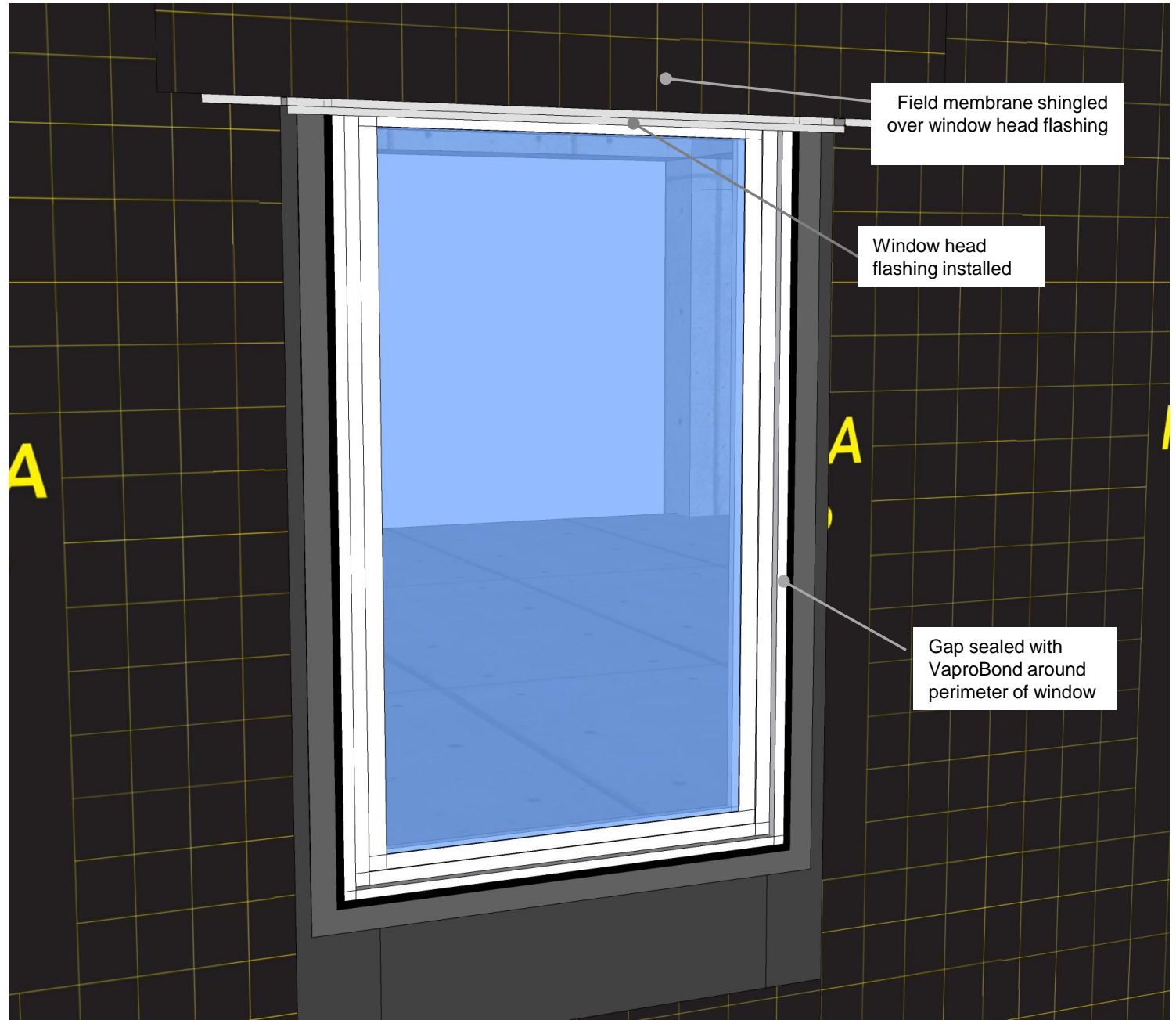


DISCLAIMER

Detail sketch is generic, representing suggested best practices for VaproShield materials, and does not represent a specific job site condition and therefore may not be applicable to certain projects. Detail sketch is designed for use as a reference and must be approved by the designer/ consultant of record for each project prior to installation by the subcontractor. Changes and approvals of VaproShield details are the sole responsibility of the designer/consultant of record. VaproShield is **not** the designer of record for building enclosure details and takes no responsibility for the accuracy or interpretation of actual project site conditions.

Always check www.VaproShield.com for the latest details and installation instructions

Fill in gap around window with VaproBond sealant



DISCLAIMER

Detail sketch is generic, representing suggested best practices for VaproShield materials, and does not represent a specific job site condition and therefore may not be applicable to certain projects. Detail sketch is designed for use as a reference and must be approved by the designer/ consultant of record for each project prior to installation by the subcontractor. Changes and approvals of VaproShield details are the sole responsibility of the designer/consultant of record. VaproShield is **not** the designer of record for building enclosure details and takes no responsibility for the accuracy or interpretation of actual project site conditions.

Always check www.VaproShield.com for the latest details and installation instructions