

WallShield IT® Integrated Tape

a mechanically attached, water resistive vapor permeable membrane with integrated tape at the horizontal seams; Product No: 10208905

WrapFlashing SA

Product No.: 46105590 / 46108090

OVERVIEW

WallShield® IT Integrated Tape is a mechanically attached high performance Water Resistive Barrier (WRB) material designed for above grade use in drainage cavity walls. WallShield IT is recommended for applications requiring a high level of vapor permeability through the building enclosure. WallShield IT provides outstanding liquid water holdout capabilities as a Water Resistive Barrier (WRB) and the Integrated Tape located at the horizontal overlaps makes it easier than ever to limit moisture infiltration with a mechanically attached membrane, even in extreme weather locations.

BEST PRACTICES

- Install WallShield IT with approved fasteners in a horizontal, shingle fashion.
- Plan prior to installation to minimize waste and ensure all interfaces and penetrations are identified and detailed correctly to protect against water infiltration.
- Horizontal overlaps must be at 6" to properly seal (optional) the Integrated Tape joint.
- Vertical overlaps are to be 12" minimum (optional: recommended for extreme weather locations, seal with VaproLiqui-Flash or VaproBond™ Adhesive Sealant.
- Vertical overlaps are to be staggered a minimum of 24" and should not occur directly above or below windows or doors.
- Inside and outside corners can be continuous, or if a vertical joint occurs within 24" horizontally, an overlap of 12" minimum in both directions is required, providing a double layer at the corner.
- Cladding attachment components are to be counted in the overall attachment requirements.
- WallShield IT must be correctly shingled with all openings, penetrations and flashings to deflect liquid water to the main drainage plain and ultimately to the exterior of the building.
- Always install WallShield IT in a "weatherboard or shingle fashion" with the upper courses lapped on top of the courses below, use the dotted line provided at 6" below the top edge.
- Sustains six (6) months (180) days UV and climate exposure prior to cladding installation.
- If desired adhesion is not attained between membranes due to site conditions, VaproShield recommends applying a bead of VaproBond as an additional solution to pressure rolling.

SUBSTRATE INFORMATION

WallShield IT can be installed over multiple substrates including: plywood, OSB, framing lumber, gypsum sheathing, rigid insulation, and semi-rigid insulation (mineral fiber).

WallShield IT can be installed over wet substrates to further limit water intrusion and to allow the substrate to dry during construction. The following procedures are recommended:

1. The roof of the structure should be completely dried-in by either temporary measures or permanent installation, in order to prevent water intrusion throughout the remainder of construction.
2. Window and door rough openings should be protected against water intrusion by temporary or permanent measures throughout the remainder of construction.
3. Proper means and methods of drying the entire structure sufficiently prior to closing up the building enclosure are the responsibility of the General Contractor.

FASTENING GUIDELINES

WallShield IT is mechanically fastened to the substrate. Stainless steel staples or cap nails may be used as temporary fasteners during installation but only at locations that will be covered by the shingling of the next layer of material. See the sequential installation details on page 3.

DO NOT place fasteners in the Integrated Tape overlap area prior to removing the release films and sealing the Integrated Tape seam. Fasteners placed in the tape area can tear the release film during removal, resulting in a poor seal. Place fasteners in the overlap area after the Integrated Tape release films are removed and the horizontal joint is sealed.

Exposed fasteners for the WallShield IT will require VaproCaps and #6, #7, or #8 size corrosion resistant bugle headed screws of the appropriate thread design and length for the underlying substrate and framing material.

VaproCaps are washers that have been extensively tested for water leakage. Substitutions are not recommended.

Cladding attachments that penetrate the WRB should be factored into the overall fastening quantity and placement.

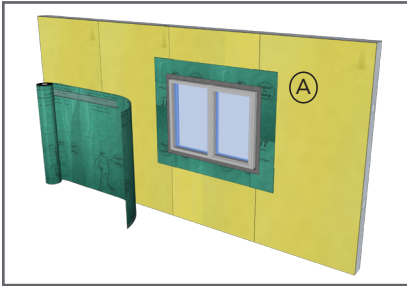
Quantity and placement of fasteners will vary depending on the following variables:

- Length of time the installed WallShield IT WRB will be exposed prior to cladding attachments installation such as: furring strips, battens, hat channels, masonry ties, metal extrusions, etc.
- Spacing between the cladding attachments (i.e. 16", 24", 32" o.c., etc.)
- Type and material chosen for exterior cladding
- Local weather conditions
- Plywood and OSB sheathing applications: Use coarse threaded bugle head design wood screws in the above mentioned sizes, install with VaproCaps only in the sheathing, without contacting the underlying framing members.
- Gypsum Sheathing and Metal Framing: Use self-drilling fine threaded screws in the above mentioned sizes and shape with VaproCaps installed into the underlying metal framing or strapping.
- Fasteners for VaproBattens, furring strips, cladding clips, hat channels, etc. should be evaluated for liquid water holdout properties before selection or installation. Gasketed fasteners are recommended whenever possible. Contact VaproShield Technical Support for additional information on fasteners.

INSTALLATION INSTRUCTIONS

WallShield IT Product No.: 10208905 / WrapFlashing SA, Product No.: 46105590 / 46108090

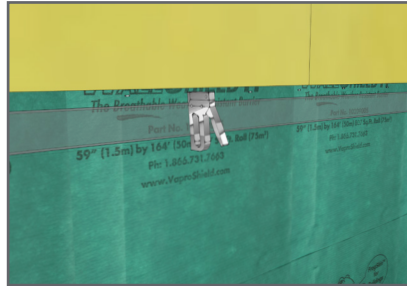
BEST PRACTICE INSTALLATION SEQUENCE FOR WRAPSHIELD IT STEPS 1-10



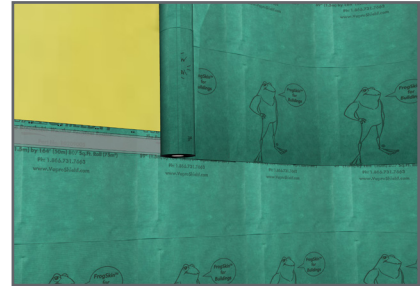
1. After flashing the window's rough opening, begin installation at the base of the wall, progressing in a shingle fashion upwards.

Snap a level chalk line for guidance.

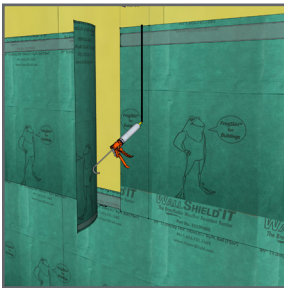
(A) See VaproShield.com for window options and flashing installation guide.



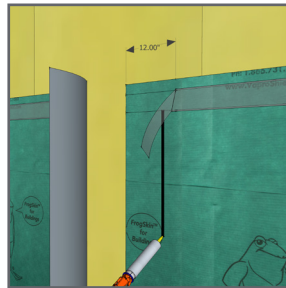
2. Install with SS staples in the top 2" above the Integrated Tape. Avoid stapling in the adhesive strip area of the Integrated Tape.



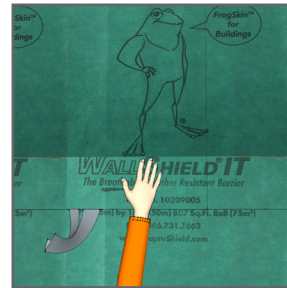
3. Line up the bottom of the upper course of material with the dotted line, creating a 6" overlap.



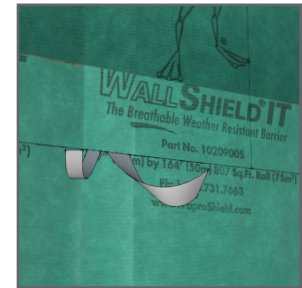
4. Overlap vertical seams by 12" minimum, seal with VaproLiqui-Flash or VaproBond Adhesive Sealant if necessary.



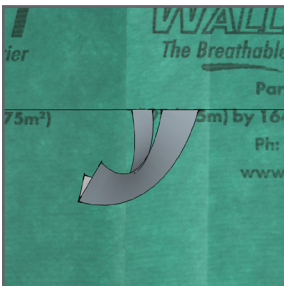
5. Remove release film from top of adhesive strip where flap overlaps.



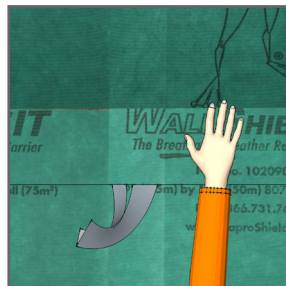
6. Lay overlapping layer of WallShield IT onto vertical sealant joint and smooth with hand pressure.



7. Optional for extreme exposure locations: Join horizontal seams by peeling back both release films, starting from where horizontal joint meets vertical joint.



8. Optional for extreme exposure locations: Line up both release films together so they can be pulled down the wall with one hand.



9. Optional for extreme exposure locations: Use the opposite hand to smooth the two layers together as the release film is removed.



10. Optional for extreme exposure locations: Smooth out wrinkles with hand pressure and seal the adhesive strips using a hand roller.