

VaproMat™

a hydrophobic filter fabric with a polypropylene drainage matrix
Product No.: 3mm 28874292, 7mm 28874294

OVERVIEW

VaproMat is designed to be installed over VaproShield membranes as a system to provide a positive drainage cavity behind claddings.

AIR BARRIER INSTALLATION

Air barrier installation requires all seams, joints, overlaps and penetrations WRB/AB membrane to be sealed for complete air barrier continuity.

BEST PRACTICES OVERVIEW

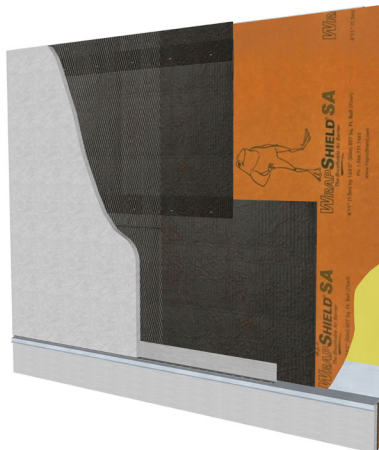
- Always install VaproMat, filter fabric side out, vertically with seams butted together, overlapping the 2" filter fabric selvage edge. Do not overlap the drainage matrix.
- Refer to membrane specific installation instructions for proper membrane installation.
- Building layout should be planned prior to installation to minimize waste and ensure all interfaces and penetrations are identified and correctly detailed to protect against water and air infiltration.
- Proper sequencing is critical. Protect rough openings and large penetrations with specified rough opening material.
- Maximum exposure prior to cladding installation is 90 days.
- Install lath and weep screeds "proud" or over the VaproMat material.

STONE INSTALLATION



Page 2

STUCCO INSTALLATION



Page 3

SIDING INSTALLATION



Page 4

INSTALLATION INSTRUCTIONS - STONE

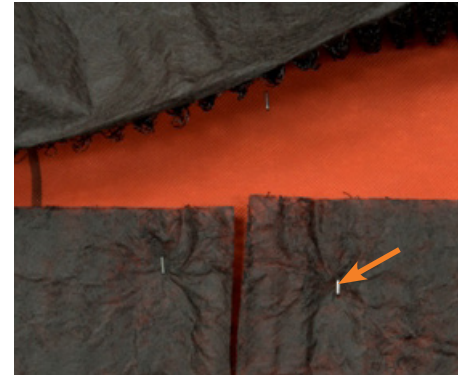
VaproMat™ Product No.: 3mm 28874292, 7mm 28874294



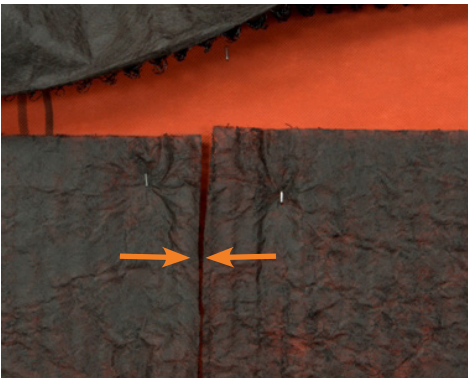
1. Install VaproShield WRB/Air Barrier membrane according to installation instructions. Pictured: *WrapShield SA* WRB/Air Barrier.



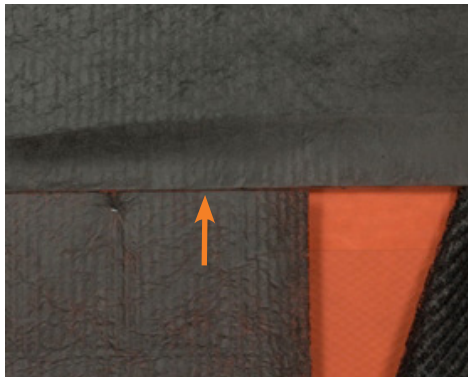
2. Place VaproMat horizontally against exterior wall, filter fabric side out. The drainage matrix should face the building interior. Starting at the bottom of the wall, position the first piece of VaproMat at the bottom edge of the stone where the weep screed is located (weep screed installed by others).



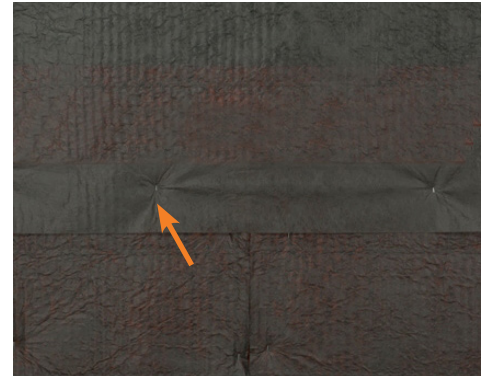
3. Mechanically fasten VaproMat approx. 2" down from the top edge with stainless steel (SS) staples. Continue securing VaproMat every 24". Remaining VaproMat material will be held in place by stone lathing fasteners.



4. Vertical seams of VaproMat drainage matrix butt together and do not overlap.

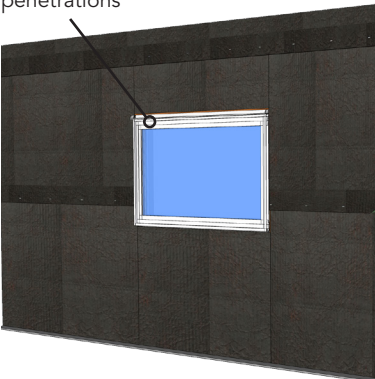


5. Horizontal seams of the drainage matrix butt together.

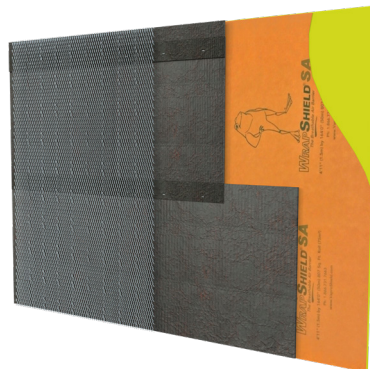


6. Overlap the 2" selvage edge in shingle fashion. Secure every 24" with SS staples.

Trim around windows and penetrations

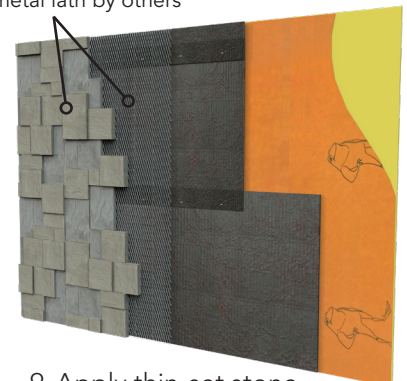


7. Trim VaproMat around all penetrations, windows and doors.



8. Install expanded metal lath over the VaproMat according to the manufacturers' recommendations. Consult the Adhered Stone Manufacturers Stone Guidelines. All lath including weep screeds are installed "proud" or over the VaproMat material.

Adhered stone cladding over metal lath by others



9. Apply thin-set stone according to manufacturers' recommendations. Guidelines should include a weep method for ventilation and drainage as recommended.

INSTALLATION INSTRUCTIONS - STUCCO

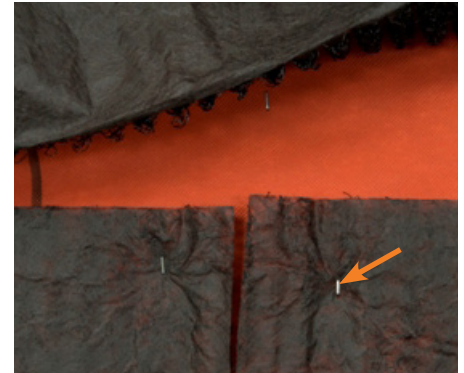
VaproMat™ Product No.: 3mm 28874292, 7mm 28874294



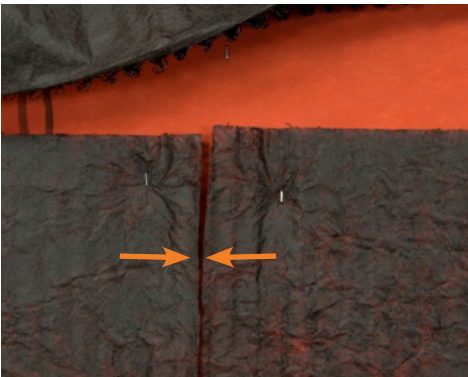
1. Install VaproShield WRB/Air Barrier membrane according to installation instructions. Pictured: *WrapShield SA* WRB/Air Barrier.



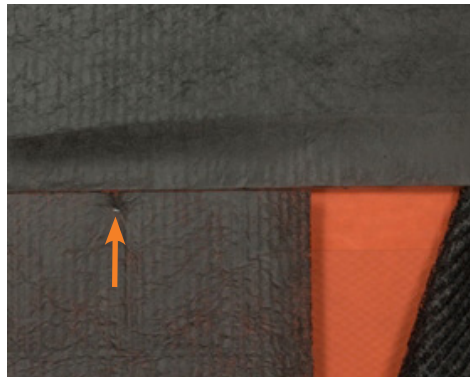
2. Place VaproMat horizontally against exterior wall, filter fabric side out. The drainage matrix should face the building interior. Starting at the bottom of the wall, position the first piece of VaproMat at the bottom edge of the stone where the weep screed is located (weep screed installed by others).



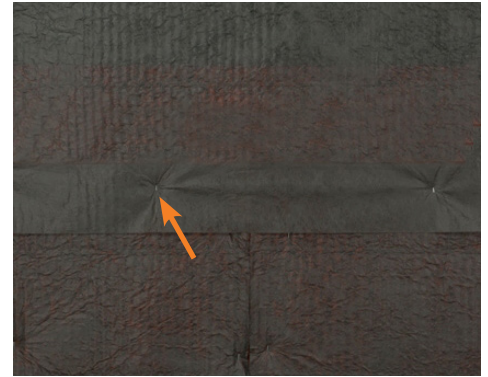
3. Mechanically fasten VaproMat approx. 2" down from the top edge with stainless steel (SS) staples. Continue securing VaproMat every 24".



4. Vertical seams of VaproMat drainage matrix butt together and do not overlap.

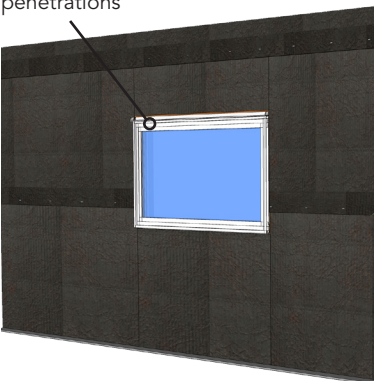


5. Horizontal seams of the drainage matrix butt together.

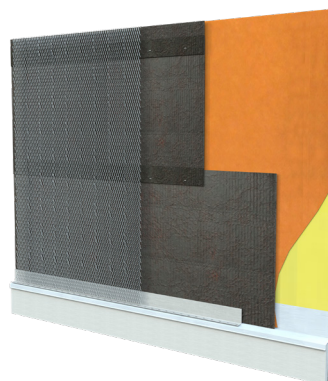


6. Overlap the 2" selvage edge in shingle fashion. Secure every 24" with SS staples.

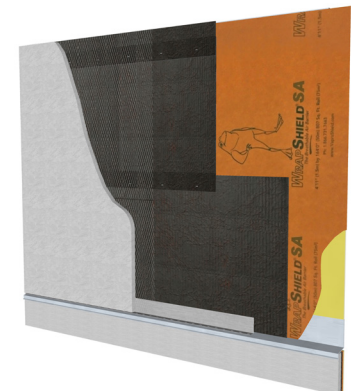
Trim around windows and penetrations



7. Trim VaproMat around all penetrations, windows and doors.



8. Install expanded metal lath over the VaproMat according to the manufacturers' recommendations. Consult NW Wall and Ceiling Bureau, nwcb.org, for details regarding drainage stucco systems. All lath including weep screeds are installed "proud" or over the VaproMat material.



9. Apply stucco according to manufacturers' recommendations. Guidelines should include a weep method for ventilation and drainage as recommended by Northwest Wall and Ceiling Bureau details www.nwcb.org.

INSTALLATION INSTRUCTIONS - SIDING

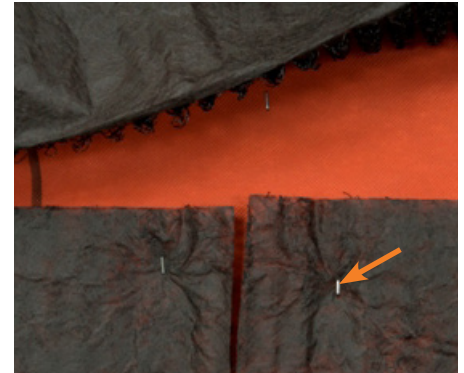
VaproMat™ Product No.: 3mm 28874292, 7mm 28874294



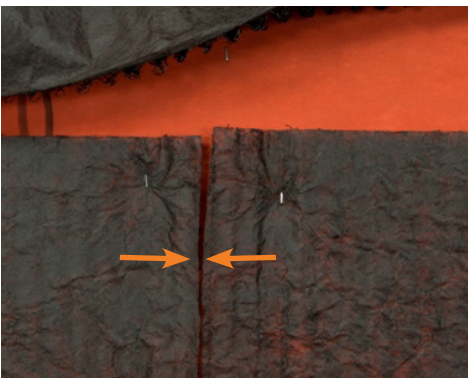
1. Install VaproShield WRB/Air Barrier membrane according to installation instructions. Pictured: *WrapShield SA WRB/Air Barrier*.



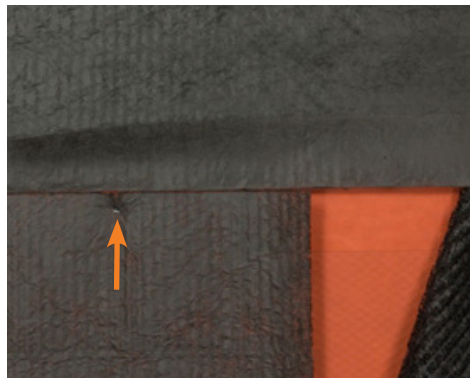
2. Place VaproMat horizontally against exterior wall, filter fabric side out. The drainage matrix should face the building interior. Starting at the bottom of the wall, position the first piece of VaproMat at the bottom edge of the stone where the weep screed is located (weep screed installed by others).



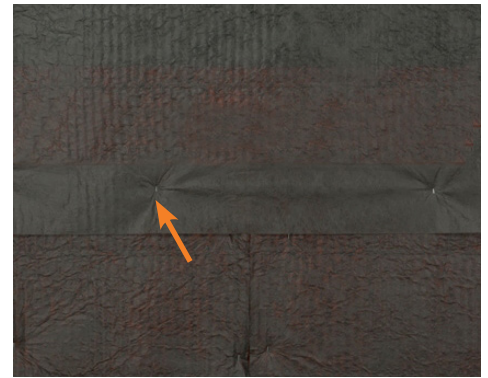
3. Mechanically fasten VaproMat approx. 2" down from the top edge with stainless steel (SS) staples. Continue securing VaproMat every 24".



4. Vertical seams of VaproMat drainage matrix butt together and do not overlap.

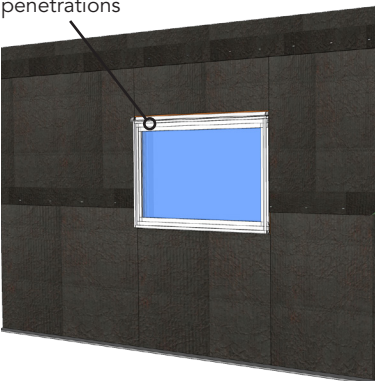


5. Horizontal seams of the drainage matrix butt together.



6. Overlap the 2" selvage edge in shingle fashion. Secure every 24" with SS staples.

Trim around windows and penetrations



7. Trim VaproMat around all penetrations, windows and doors.



8. Install wood siding, shingles and fiber-cement siding according to manufacturers' recommendations.

Important Installation Note:

When choosing siding fasteners, allow for thickness of VaproMat (3mm or 7mm). Pneumatic nail guns can be used if nails meet manufacturers' recommendations and air pressure and depth gauge is set to fasten nail snug with surface. **Do not over fasten!**