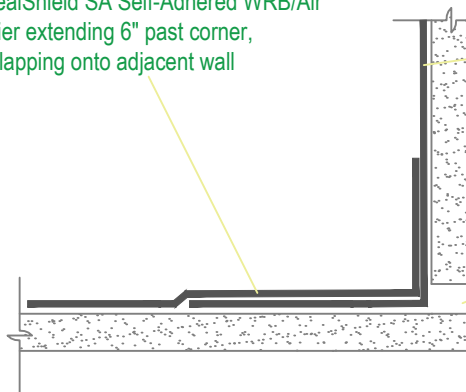


# VS Inside-and-Outside-Corners RevealShield 091219



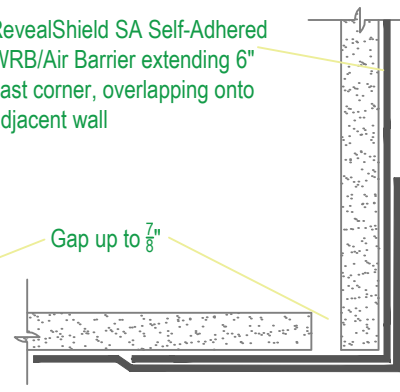
VAPROSHIELD LLC  
915 26TH AVE. N.W. SUITE C5  
GIG HARBOR, WASHINGTON 98335  
TOLL FREE: 1-866-731-7663  
FAX: (253) 858-3297  
[www.vaproshield.com](http://www.vaproshield.com)

RevealShield SA Self-Adhered WRB/Air Barrier extending 6" past corner, overlapping onto adjacent wall



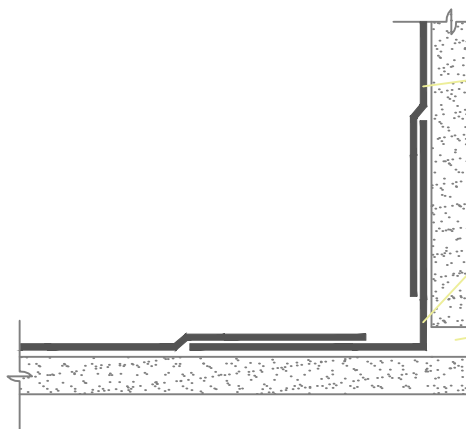
INSIDE CORNER DETAIL  
MEMBRANE METHOD

RevealShield SA Self-Adhered WRB/Air Barrier extending 6" past corner, overlapping onto adjacent wall



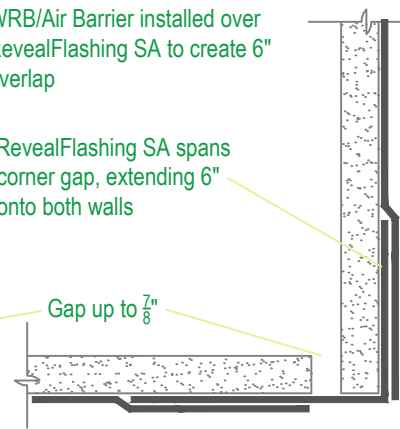
OUTSIDE CORNER DETAIL  
MEMBRANE METHOD

RevealShield SA Self-Adhered WRB/Air Barrier installed over RevealFlashing SA to create 6" overlap



INSIDE CORNER DETAIL  
FLASHING METHOD

RevealFlashing SA spans corner gap, extending 6" onto both walls



OUTSIDE CORNER DETAIL  
FLASHING METHOD

Note: VaproBond may be added at vertical seams for high wind exposure installations

## MANUFACTURER NOTES:

1. DETAIL SKETCH IS GENERIC, REPRESENTING SUGGESTED BEST PRACTICES FOR VAPROSHIELD MATERIALS, AND DOES NOT REPRESENT A SPECIFIC JOB SITE CONDITION AND THEREFORE MAY NOT BE APPLICABLE TO CERTAIN PROJECTS.
2. DETAIL SKETCH IS DESIGNED FOR USE AS A REFERENCE AND MUST BE APPROVED BY THE DESIGNER/ CONSULTANT OF RECORD FOR EACH PROJECT PRIOR TO INSTALLATION BY THE SUBCONTRACTOR.
3. CHANGES AND APPROVALS OF VAPROSHIELD DETAILS ARE THE SOLE RESPONSIBILITY OF THE DESIGNER/CONSULTANT OF RECORD.
4. VAPROSHIELD IS NOT THE DESIGNER OF RECORD FOR BUILDING ENCLOSURE DETAILS AND TAKES NO RESPONSIBILITY FOR THE ACCURACY OR INTERPRETATION OF ACTUAL PROJECT SITE CONDITIONS.

## NOTES:

1. INSTALLATION TO BE COMPLETED IN ACCORDANCE WITH MANUFACTURER'S SPECIFICATIONS.
2. DO NOT SCALE DRAWING.
3. THIS DRAWING IS INTENDED FOR USE BY ARCHITECTS, ENGINEERS, CONTRACTORS, CONSULTANTS AND DESIGN PROFESSIONALS FOR PLANNING PURPOSES ONLY. THIS DRAWING MAY NOT BE USED FOR CONSTRUCTION.
4. ALL INFORMATION CONTAINED HEREIN WAS CURRENT AT THE TIME OF DEVELOPMENT BUT MUST BE REVIEWED AND APPROVED BY THE PRODUCT MANUFACTURER TO BE CONSIDERED ACCURATE.