

# Project Profile

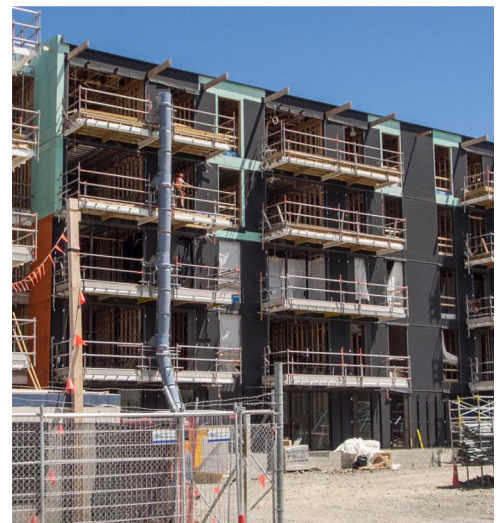
# Atlas Quarter | Christchurch, NZ



Situated on an acre of central city land, Atlas Quarter is a multi-use project in Christchurch, NZ. Built with high performing and maintenance-free materials, the structure will offer longevity and sustainability for the New Zealand market.

Over 20,000 sq. ft. of WrapShield SA Self-Adhered and RevealShield SA Self-Adhered were specified for the project, as both products are high performing and phase-construction friendly. WrapShield SA Self-Adhered was quickly installed without special equipment or toxic primers, while RevealShield SA Self-Adhered will offer the desired black reveal behind the building's chic open-joint façade.

The apartments are expected to go on sale in November, triggered redevelopment of several old industrial buildings on Welles St. and construction plans for bare sites





## The Specifications

VaproShield Solution	WrapShield SA Self-Adhered and RevealShield SA Self-Adhered
Size	N/A
Construction Type	New, Multi-Use
Architect	Architectus   Christchurch, NZ <a href="http://www.architectus.com.au/">http://www.architectus.com.au/</a>
VaproShield Rep	John Gibbons   Maxclad.co.nz Christchurch, NZ

