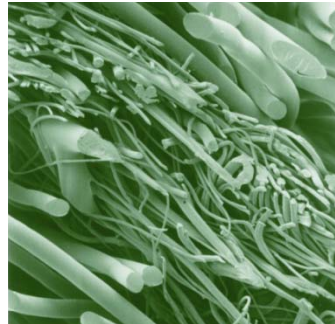


PROJECT PROFILE | RIVERSCAPE, PORTLAND, OREGON

PROJECT ENGINEERS
BEE Engineering

CONSTRUCTION MANAGEMENT
Construction Design Services Corporation

VAPROSHIELD REPRESENTATIVE
Lee Snyder
VaproShield LLC
91526th Avenue, N.W. Suite C5
Gig Harbor, WA 98335
866-731-7663 toll free
lees@vaprosshield.com



ENVIRONMENTAL IMPACT

VaproShield products were designed with nature and the built environment in mind. VaproShield products are 100% recyclable. WallShield is constructed from a three-layer, spun bonded polypropylene fabric; it is inert and can be recycled into its original bead form for reuse in other manufacturing processes.

Since **WALLSHIELD** is a Weather Resistive Vapor and Air Permeable Membrane, its unique construction allows moisture to continue to filter through to the exterior of the building during and after construction and occupancy.

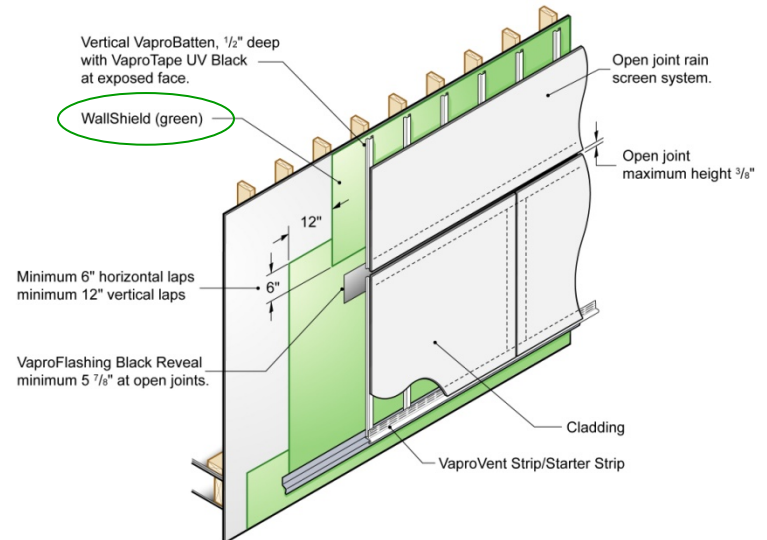
PRODUCT(S)
WallShield

PROJECT DESCRIPTION

Riverscape Condominiums located on the Columbia River was engineered to address the high rain and winds common to this area. WallShield was selected for a number of reasons:

- High wind resistance (no flapping)
- Rain screen design capability
- Water hold out capacity
- Ensures the building dries during and after the construction phase during the one year project.

Over 400,000 square feet of WallShield was applied behind metal panels, wood siding and cement board siding.



Installation of WallShield

