

PROJECT PROFILE | PENN VALLEY COMMUNITY COLLEGE | KANSAS CITY, MO

ARCHITECT  
Gould Evans Associates  
Kansas City, MO  
(816) 931-6655

VAPROSHIELD REPRESENTATIVE  
Dwight Rasmussen  
Chesterfield, MO  
drasmussen@rsstl.com  
(636) 537-4004

INSTALLER  
Heartland Specialties  
Overland Park, KS  
(913) 422-4288

PRODUCT(S)  
**WALLSHIELD® BLACK** Water Resistive Barrier Sheet

PROJECT DESCRIPTION

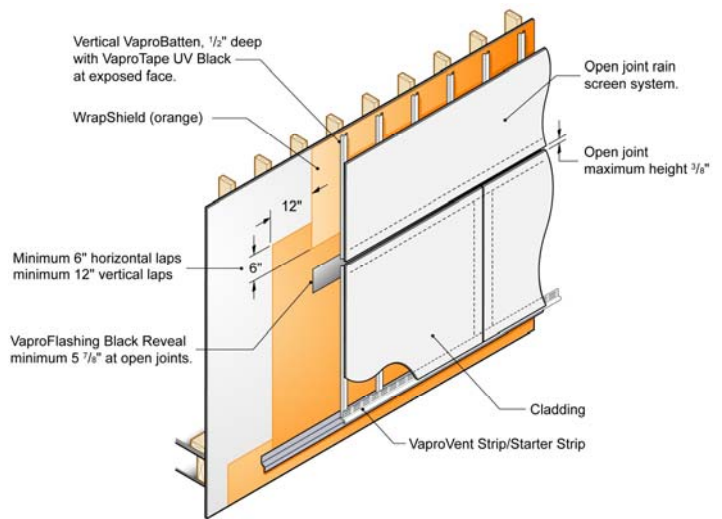
Over 3,000 sq.ft. WallShield Black Water Resistive Barrier Sheet was installed behind the fiber cement open-joint rain screen panel system from Cladding Corp® on the new Health Science Institute at Penn Valley Community College in Kansas City, Missouri. The building houses labs for many medical specialties, a dental clinic, surgical suites, a student health clinic and offices.

WallShield Black and flashing components are an excellent solution for the unique wall design called Open Joint Rain Screen.

- Open Joint specifications require vapor permeable membranes, air resistance and durability to resist the damaging effects of moisture and ultra-violet exposure at the open joints.
- WallShield Black with a rating of 212 perms is the most weather resistive, vapor and air permeable underlayment on the market today.
- Works with multiple types of open joint cladding in a 50% lap detail or as a sacrificial layer over our other membranes.
- 20 year warranty



WallShield Black was installed on the new Health Science Institute.



WallShield Black can resist the damaging effects of moisture and ultra-violet exposure at open joints.