

PROJECT PROFILE | HILL7 | SEATTLE, WA

ARCHITECT

Aedas
Seattle, WA 98154
206-452-1230

VAPROSHIELD REPRESENTATIVE

Peter Vierthaler
Snyder Architectural Systems
Gig Harbor, WA 98335
206-784-0920
peterv@vaproshield.com

CONTRACTOR

Mortenson
Kirkland, WA 98033
425-895-9000

INSTALLER/PREFABRICATOR

PCI Seattle
Kirkland, WA 98033
425-895-9000

PRODUCT(S)

WRAPSHIELD® SA Self-Adhered Water Resistive Vapor Permeable Air Barrier Sheet

PROJECT DESCRIPTION

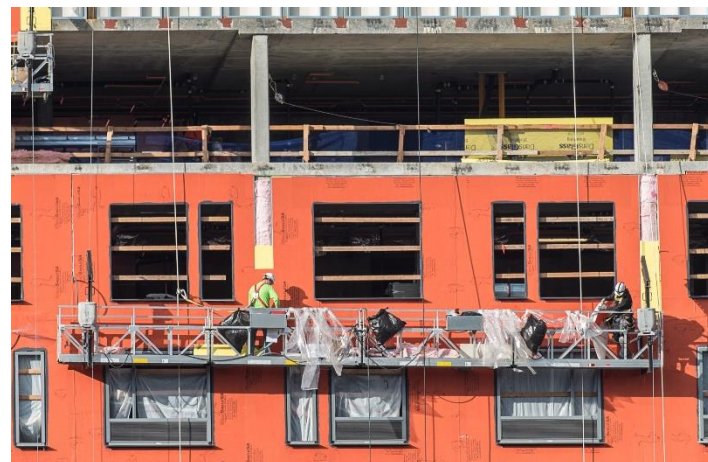
Hill7 is an 11-story, 285,000 sq. ft. work and life space development project in the Denny Triangle area of downtown Seattle. It features over 35,000 sq. ft. of WrapShield SA Self-Adhered Water Resistive Vapor Permeable Air Barrier Sheet with VaproLiqui-Flash, an easy-to-install permeable hybrid fluid flashing for rough openings. Used in conjunction with steel studs, DensGlas® Gold sheathing, roof wool insulation and ProClad™ metal panels, WrapShield SA Self-Adhered contributes to Hill7's lifelong energy-efficiency by creating a permeable air barrier system.

WrapShield SA Self-Adhered offers:

- Zero VOC's (no off-gassing)
- DOES NOT REQUIRE A PRIMER
- Secondary Rain Barrier
- Low Temperature Applications
- Fire Rated, Class A to ASTM E 84
- 6 Months UV & Climate Exposure
- High Temperature Resistance
- Tough, Durable, Tear-Resistant
- Contributes to LEED points



Modular panels used WrapShield SA SelfAdhered as part of their factory fabrication. The membrane was factory installed and the panels were transported to the site for installation.



WrapShield SA Self-Adhered is easy to install on-site by simply pulling off the clear release paper and smoothing with a roller.



Stay up-to-date on Hill7 with views from the EarthCam® construction camera at www.earthcam.net/projects/mortenson/hill7/. Images are updated every 15 minutes to provide a fresh look at the jobsite.