

PROJECT PROFILE | GROVE TOWER | PLEASANT GROVE, UTAH

VAPROSHIELD REPRESENTATIVE

Elliott Associates, Inc
Mike Moriarity
Utah, Southern Idaho and Montana
mike@easales.com

ARCHITECT

Beecher Walker
Holladay, UT

GENERAL CONTRACTOR

Jacobsen Construction
Salt Lake City, UT

INSTALLER

Noorda
Salt Lake City, UT

PRODUCT(S)

WRAPSHIELD SA[®] SELF-ADHERED Water Resistive Vapor Permeable Air Barrier Sheet Membrane

PROJECT DESCRIPTION

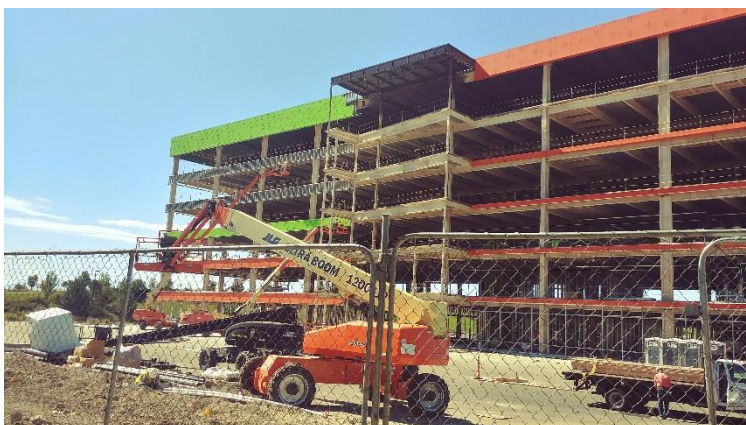
Grove Tower, a 189,783 sq. ft. office building located in the heart of Utah County, features WrapShield SA Self-Adhered as the WRB/Air-barrier membrane.

Although construction involved complex pathworks and a demanding schedule, WrapShield SA Self-Adhered was up to challenge. Entirely self-adhering, WrapShield SA Self-Adhered did not require any primer and was easily installed. Phase construction friendly and ideal for projects with tight timelines, WrapShield SA Self-Adhered required less labor and installed quickly -- saving time and money.

Designed for LEED Gold Certification, Grove Tower is adjacent to over 80 acres of prime future retail and hospitality amenities.



WrapShield SA Self-Adhered WRB/Air Barrier (orange) installed on Grove Tower in Pleasant Grove, UT.



WrapShield SA Self-Adhered does not require any primer, and crews are always safe around the product as it emits zero VOCs and contains no red list chemicals.

