

PROJECT PROFILE | POTAWATOMI BINGO CASINO | MILWAUKEE, WI

ARCHITECT

Cunningham Group - Minneapolis
Minneapolis, MN
612-379-3400

VAPROSHIELD REPRESENTATIVE

Mike Herbst
mherbst@ebpm.com
952-380-0730

PRODUCT(S)

WRAPSHIELD SA[®] SELF-ADHERED Water
Resistive Vapor Permeable Air Barrier Sheet
Membrane

PROJECT DESCRIPTION

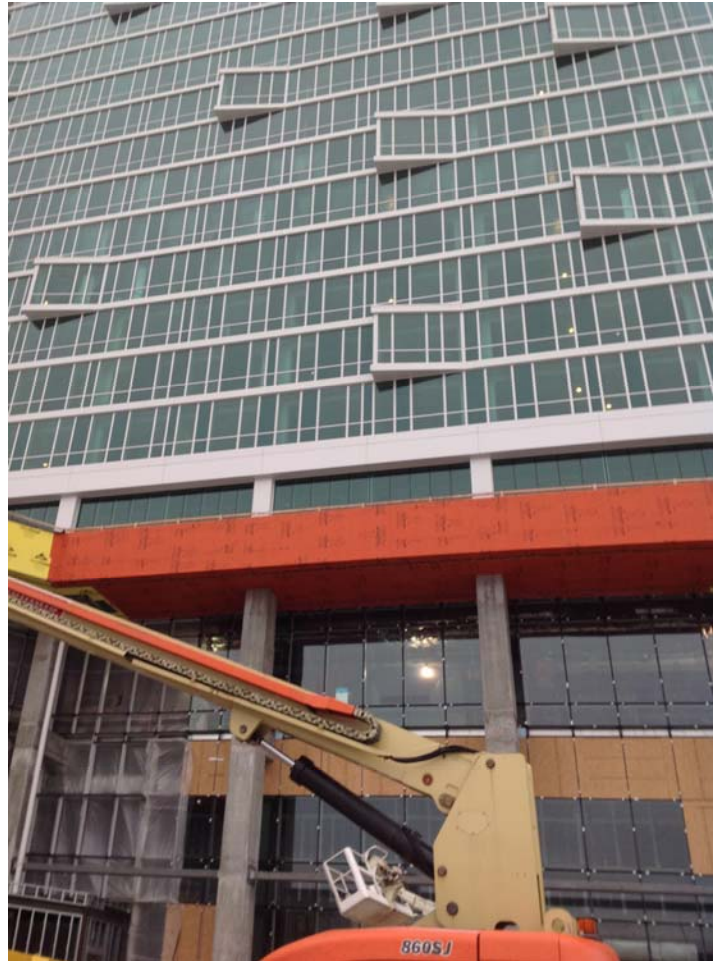
Over 21,789 sq. ft. of WrapShield SA Self-Adhered Air Barrier was installed on the \$150 million Potawatomi Bingo Casino hotel located in Milwaukee, Wisconsin.

Designed as a 3½ star facility, the new construction will be directly linked to the already existing casino. The 381-room hotel will include a spa and exercise area, a casual-dining restaurant, a lobby bar, and designated meeting space.

It was extremely important to the Potawatomi Bingo Casino that the facility be built using green, environmentally-friendly materials. WrapShield SA Self-Adhered made a perfect addition to the eco-friendly construction site as the vapor permeable air barrier sheet membrane produces zero VOC's, does not require a primer and can contribute to LEED certification points in multiple categories.

WrapShield SA Self-Adhered guarantees occupants of the Potawatomi Bingo Casino a pleasant indoor environment by allowing moisture in the building envelope to evaporate and escape. This prevents the formation of mold, mildew and rot ensuring good indoor air quality for hotel occupants and protecting the structural integrity of the \$150 million building investment.

The Potawatomi Bingo Casino hotel is slated to welcome guests Fall 2014.



Approximately 21,378 sq. ft. of WrapShield SA Self-Adhered Air Barrier (orange) installed on Potawatomi Bingo Casino.

