

PROJECT PROFILE | THE CONFLUENCE | DENVER, COLORADO

VAPROSHIELD REPRESENTATIVE

Elliott Associates, Inc
Matt Lyon
Golden, CO
303-429-0149

ARCHITECT

GDA Architects
Dallas, TX
214-871-9078

GENERAL CONTRACTOR

Clark Construction
Golden, CO
303-985-1660

INSTALLER

Gen3
Denver, CO
303-274-6332

PRODUCT(S)

WRAPSHIELD SA[®] SELF-ADHERED Water Resistive Vapor Permeable Air Barrier Sheet Membrane

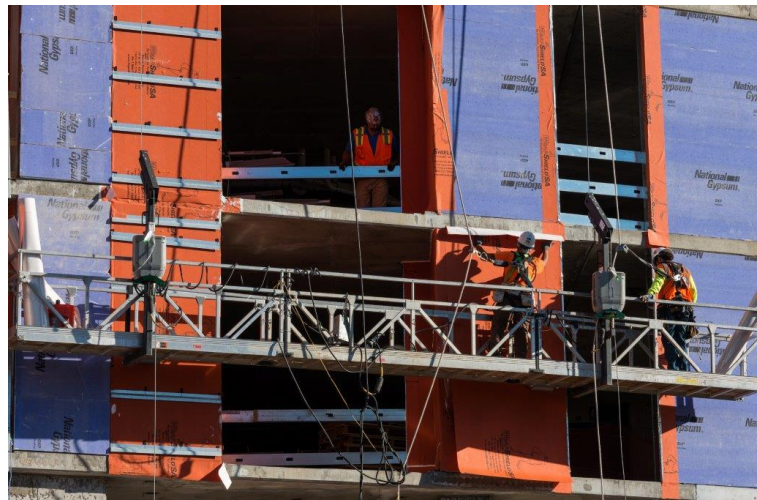
PROJECT DESCRIPTION

Designed to meet the needs of Denver's discerning renters market, The Confluence offers luxury rental residences with condo-like amenities in the heart of the vibrant LoDo area. Expected to be completed in 2017, the \$90M building initially endured serious construction delays due to rising construction costs, extreme weather and environmental concern. Although this created a demanding project timeline, WrapShield SA Self-Adhered was up to challenge. Entirely self-adhering, WrapShield SA Self-Adhered does not require any primer and is designed for easy installation. Phase construction friendly and ideal for projects with tight timelines, WrapShield SA Self-Adhered requires less labor and installs quickly -- saving time and money. The Confluence utilized over 150,000 sq. ft. of WrapShield SA Self-Adhered behind curtain wall and metal panel facades.

Once completed, the 34 story building will feature 288 luxury units including penthouses with private elevators. Residences can expect to enjoy many other chic amenities including: a large terrace with saltwater infinity pool, outdoor cabanas, an all-inclusive fitness center, concierge, a dog washing station, and a 24-hour coffee bar.



WrapShield SA Self-Adhered WRB/Air Barrier (orange) is being installed on The Confluence in Denver, Colorado.



WrapShield SA Self-Adhered does not require any primer, and crews are always safe around the product as it emits zero VOC's and contains no red list chemicals.

