

**PROJECT PROFILE | CHRISTCHURCH JUSTICE & EMERGENCY SERVICES PRECINCT | CHRISTCHURCH, NEW ZEALAND**

**VAPROSHIELD REPRESENTATIVE**

John Gibbons  
Maxclad Ltd  
Tel: +64 3 3588179  
Mobile: +64 21 614373  
www.maxclad.co.nz

**ARCHITECT**

Warren & Mahoney  
Christchurch, New Zealand  
www.warrenandmahoney.com/en/

**INSTALLER**

Miller Design  
Auckland, New Zealand  
+64 9 525 5788

**PRODUCT(S)**

**WRAPSHIELD SA**<sup>®</sup> SELF-ADHERED Water Resistive Vapor Permeable Air Barrier Sheet Membrane

**PROJECT DESCRIPTION**

Christchurch Justice and Emergency Services Precinct (CJESP) is the most ambitious plan for an emergency services facility in New Zealand to date. Once completed, it will be the first government funded anchor project to be constructed as a key component of the CERA Blueprint for recovery—generated as a result of the devastating earthquakes of 2010 and 2011.

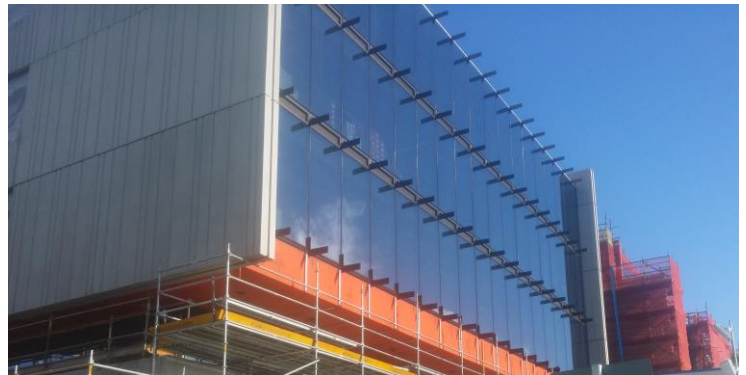
WrapShield SA Self-Adhered was installed on the 40,000m building as part of countless measures to keep it up to IL 4 Standard, ensuring that it will withstand significant seismic events and remain in operation to provide central services to the Christchurch community.

WrapShield SA Self-Adhered was the ideal match for the CJESP's unique architectural design; it covered out-of-reach building corners that other air barriers couldn't entirely wrap. It does not require substrate preparation, tapes or primers—reducing labor costs by at least 20%. Common hand tools are used in installation, eliminating the need for expensive equipment and additional mobilizations.

The precinct will set the standard for New Zealand Ministry of Justice facilities to not only offer more effective operations and inter-agency collaboration, but also higher levels of amenity for the public.



*WrapShield SA Self-Adhered (orange) was installed behind cladding on the Christchurch Justice & Emergency Services Precinct in Christchurch, New Zealand.*



*WrapShield SA Self-Adhered (orange) was chosen for its ability to be applied in hard-to-reach places and its exceptional drying capacity.*

