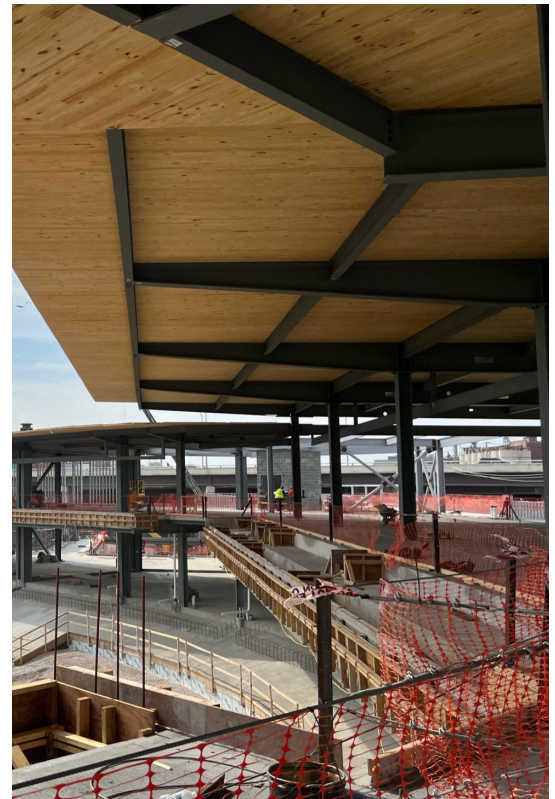




Continuing the rebirth of downtown Knoxville, baseball is returning to downtown with a public multi-use stadium. The robust redevelopment includes a stadium, the new home of the MiLB Knoxville Smokies, restaurant, retail, residential space, and public plazas.

Leveraging sustainable construction methods, the design features exposed cross-laminated timber (CLT) at The Club level. Over 40,000 sq.ft. of VaproShield's SlopeShield Plus SA was applied over the CLT at the Smartlam manufacturing facility. SlopeShield Plus SA doubled as robust protection during transport and mitigated moisture damage during installation, all while simultaneously drying the mass timber through moisture vapor diffusion. With its robust construction, SlopeShield Plus SA handles foot traffic and heavy equipment with ease. Enduring 180 days of UV and climate exposure, it helped the contractor team maintain their schedule even in the variable Knoxville weather.





## The Specifications

VaproShield Solutions	SlopeShield Plus SA Self-Adhered, PanelShield SA
Construction Type	Mass Timber
Industry Type	Commercial
Architect	GEM Associated Architects
Installer	Colorado Framing & Construction <a href="https://coloradoframingllc.com/projects">https://coloradoframingllc.com/projects</a>

