

Project Profile

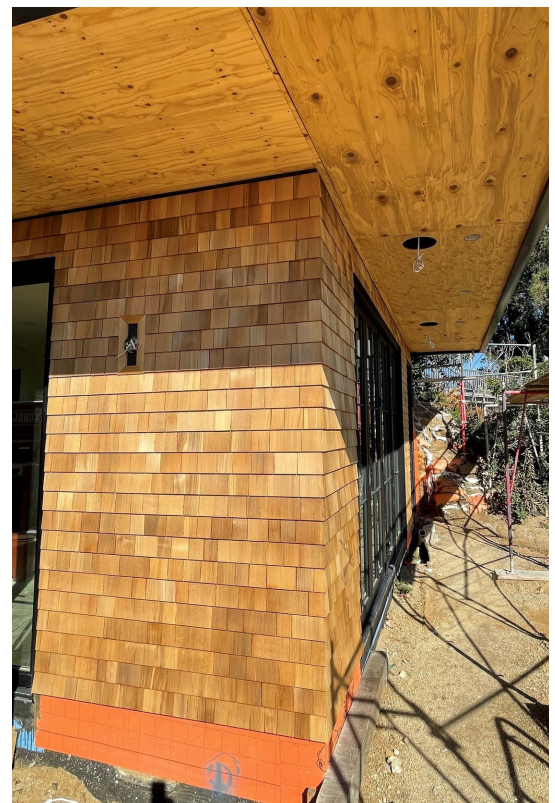
Private Residence Cypress Dr | Los Angeles, CA



Set against a stunning open skyline and offering views of the ocean and downtown Los Angeles, CA, this private residence was given the best in waterproofing and mold reduction system. The developer opted for WrapShield SA Self-Adhered, chosen for its highly permeable air barrier system designed to keep water out and allow residual moisture vapor to escape, reducing risk of damage from mold, mildew and rot.

Over 8,000 sq. ft of WrapShield SA Self-Adhered and VaproMat 3mm made for seamless installation on plywood substrate. VaproMat 3mm offered a drainage plane for the cedar shingles and stucco veneer to dry out after rain events. In addition, the high drying capacity of WrapShield SA Self-Adhered allows moisture vapor to escape, creating a high performance wall assembly for the life of the home.

VaproLiqui-Flash and pre-cut WrapFlashing SA Self-Adhered were applied all window openings and building penetrations.





The Specifications

VaproShield Solutions	WrapShield SA Self-Adhered, VaproMat 3mm, VaproLiqui-Flash
Roof/Cladding Type	Cedar Shingle - roof. PermaBase stucco – cladding
Substrate	Plywood
Industry Type	Single Family Residential
Construction Type	New Construction
Architect	GreenBuild Construction Services https://www.facebook.com/4greenbuild/
VaproShield Representative	Greg McAloney, www.whsteele.com
Contractor	GreenBuild Construction Services https://www.facebook.com/4greenbuild/
Installer	GreenBuild Construction Services https://www.facebook.com/4greenbuild/

