

Project Profile

Saltwood North and South | Portland, OR

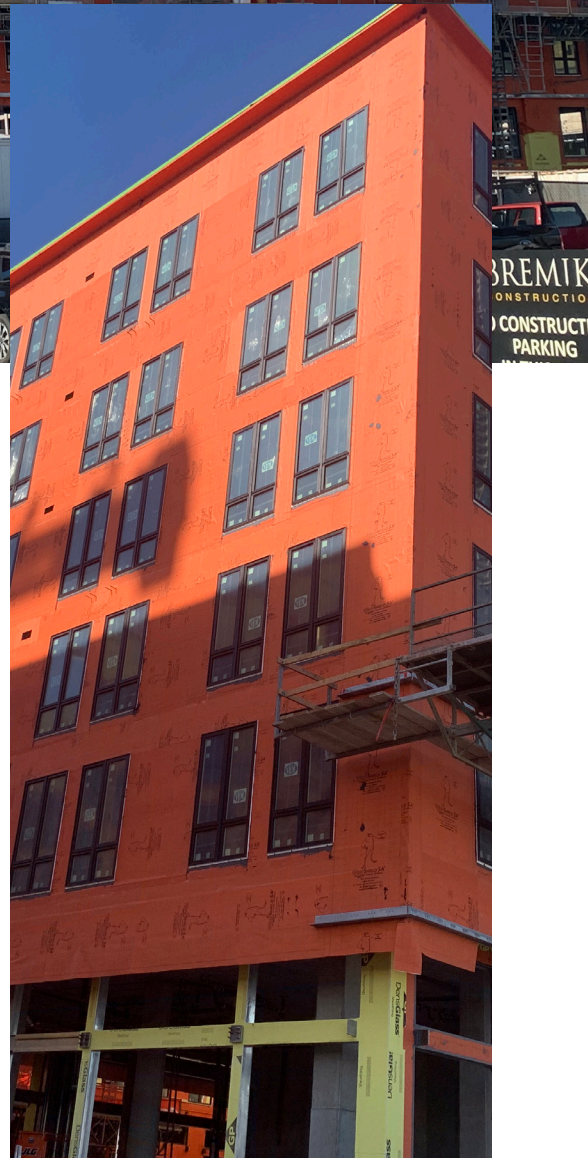


WrapShield SA Self-Adhered was installed on Saltwood North and South, a 354-unit, mixed-use development stretching across a block of Portland's vibrant Slabtown neighborhood.

The six-story project was built by two general contracting companies, Bremik Construction and R&H Construction, and features multiple cladding materials. WrapShield SA Self-Adhered was compatible with all of them, including brick, wood, and metal.

The installer had positive experiences with VaproShield on 4-5 other projects, including the well-known SlabTown Loft development, and noted that WrapShield SA was ideal for the project, as it was primerless and entirely self-adhering.

VaproLiqui-Flash and WrapFlashing SA Self-Adhered were also applied with VaproBond around the building's abundant windows for a water-tight seal. Phase-construction friendly and ideal for projects with tight timelines, WrapShield SA Self-Adhered required less labor and installed quickly – saving the developers time and money.





The Specifications

VaproShield Solution	WrapShield SA Self-Adhered
Accessories	VaproLiqui-Flash, VaproBond, WrapFlashing SA Self-Adhered
Construction Type	New, Mixed-use
General Contractor	North: Bremik Portland, OR www.bremik.com South: R&H Construction Portland, OR www.rhconst.com
Architect	SERA Architects Portland, OR www.seradesign.com
Installer	B & B Masonry Brush Prairie, WA www.brickandblock.com
VaproShield Rep	Derek Moulton Western Field Tech Manager

