

Project Profile

Castle Rock | Castle Rock, CO



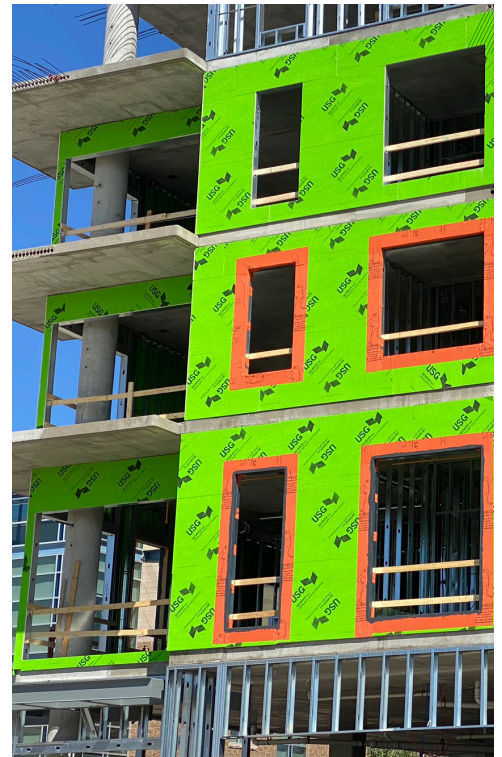
WrapShield SA Self-Adhered was installed on Castle Rock Encore, a 124-unit mixed-use development located in the vibrant downtown district of Castle Rock, CO.

WrapShield SA Self-Adhered was an ideal WRB/Air-barrier for the \$72 million dollar project, which took place in a tight, urban construction setting. Entirely self-adhering, it did not require any toxic primer over the sheathing, thereby protecting nearby pedestrians and walkers.

WrapShield SA was compatible with the building's multiple cladding materials, including brick, stucco, and metal. Installers used 3mm VaproMat under the brick cladding to create the desired rainscreen drainage plane.

WrapFlashing SA Self-Adhered and VaproLiqui-Flash were then used to flash the building's rough openings, drastically reducing labor and material costs—and saving valuable construction time in the process.

As the fourth and newest Confluence Co. development utilizing VaproShield materials, the project is slated for completion in the fall of 2021. Once completed, it will feature restaurants, retail, 29,000 sq. ft. of commercial space, and the 84,000 sq. ft. Castle Rock Recreation Center and Festival Park.





The Specifications

VaproShield Solution	WrapShield SA Self-Adhered
Accessories	WrapFlashing SA Self-Adhered, VaproLiqui-Flash, VaproMat (3mm)
Construction Type	New, Mixed-use
General Contractor	Confluence Companies Golden, CO www.confluenceco.com
Architect	Pivotal Architecture Denver, CO www.pivotal-arch.com
Installer	Complete Builder Services Denver, CO www.compblsve.com
Distributor	Genesis Building Supply Commerce City, CO www.genesisbuildingsupply.com
VaproShield Rep	Matt Lyon Elliott Associates, Inc. Golden, CO

