

## Project Profile

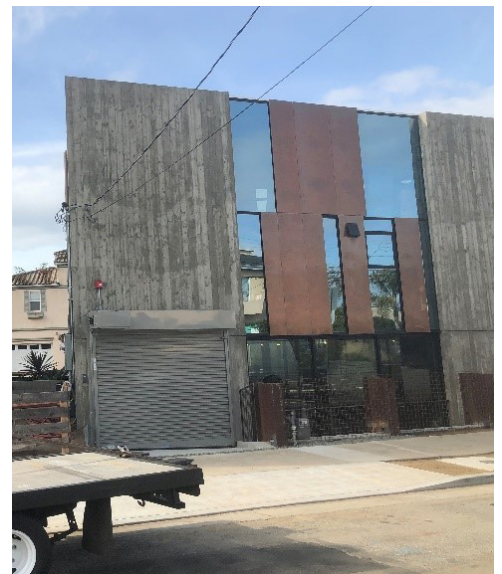
## Venice Residence | Venice, CA

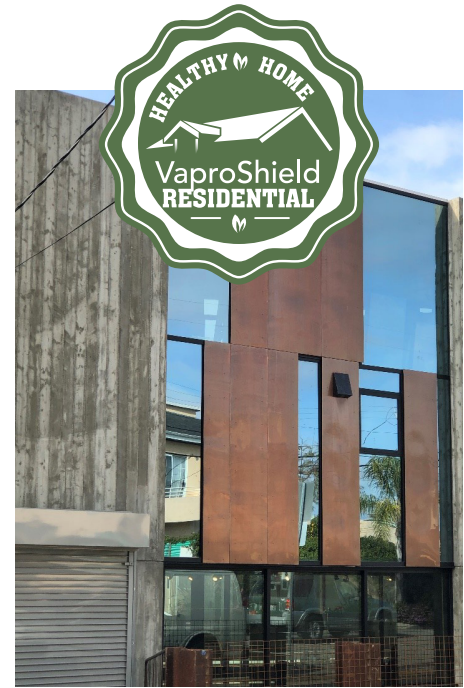


*RevealShield SA Self-Adhered and VaproLiquiFlash were installed under reclaimed barnwood Siding and raw copper panels.*

*The architect had used VaproShield on several projects in the past and knew that RevealShield SA would be perfect for open joint cladding. RevealShield SA was easy to install and held up to the sun exposure for months before the panels were installed.*

*Additionally, it was much easier to install than liquid applied air barriers, particularly with the wind, moisture, and weather constraints typical of coastal construction.*





## The Specifications

VaproShield Solution	RevealShield SA Self-Adhered
Accessories	VaproLiquiFlash
Size	3,000 sq.ft.
Construction Type	New, Residential
Architect	M. Royce Architecture   Los Angeles, CA <a href="http://www.mroycearchitecture.com">www.mroycearchitecture.com</a>
Installing Contractor	Victor Barahona   Los Angeles, CA
VaproShield Rep	W.H. Steele Company   Glendora, CA   <a href="http://www.whsteele.com">www.whsteele.com</a>

