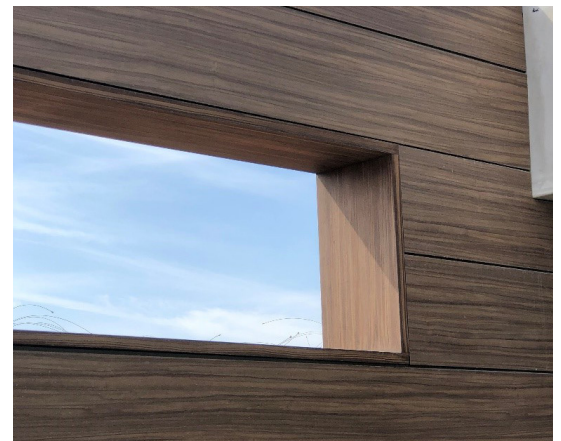




1,200 sq. ft. of RevealShield IT Integrated Tape and VaproLiquiFlash were installed under open-joint siding on a brand new Residence on The Strand of beautiful Manhattan Beach.

The owner wanted a maintenance-free cladding that would continue to look good in the harsh beach environment. The Architect had used a system with open-joint panels and a VaproShield WRB/Air Barrier on several projects in the past and decided to use 10" large siding sizes to align with window and door heads, and also to use miters at the outside corners.

RevealShield IT Integrated Tape was easy to install and held up to the sun exposure for months before the panels were installed. It was much easier to install than liquid-applied air barriers with the wind and moisture and weather constraints.





The Specifications

VaproShield Solution	RevealShield IT Integrated Tape
Accessories	VaproLiquiFlash
Size	1,200 sq.ft.
Construction Type	New, Residential
Architect	Knowlton Architects Manhattan Beach, CA www.theknowltongroup.net
Installing Contractor	R.B. Olson Construction www.rbolson.com/Exterior.htm
VaproShield Rep	W.H. Steele Company Glendora, CA www.whsteele.com