

Project Profile

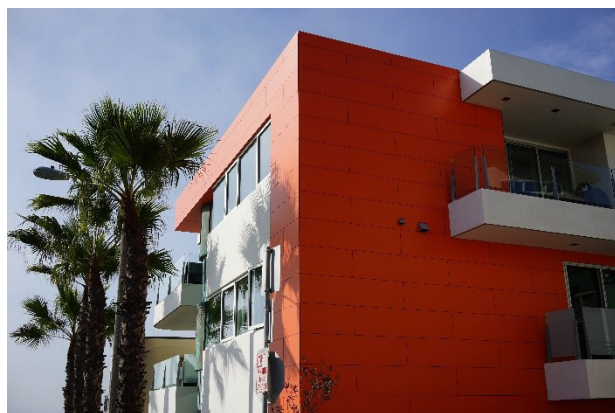
Bayview Drive Residence | Manhattan Beach, CA



RevealShield IT Integrated Tape and VaproLiquiFlash were installed under composite wood siding on the beautiful Bayview Drive Residence in Manhattan Beach, CA.

The owner wanted a maintenance-free cladding that would continue to look good in the harsh beach environment. A colleague of the homes' architect had used composite wood siding with VaproShield on several projects, so he recommended VaproShield for this project. Keeping costs down was critical, so they opted to work with the local Rep and specified the least expensive option, using 24" high siding in a solid color and VaproShield's RevealShield IT Integrated Tape.

RevealShield IT Integrated Tape was easy to install and held up to the sun exposure for months before the panels were installed. It was much easier to install than Liquid applied air barriers with the wind and moisture and weather constraints.





The Specifications

VaproShield Solution	RevealShield IT Integrated Tape
Accessories	VaproLiquiFlash
Size	1,200 sq.ft.
Construction Type	New, Residential
Architect	Bob Souva Architects Manhattan Beach, California www.resouvadesignbuild.com
Installing Contractor	Sunset Park Construction Santa Monica, CA www.sunsetparkconstruction.com
VaproShield Rep	W.H. Steele Company Glendora, CA www.whsteele.com