

Vapro-SS Flashing is a multi-purpose self-adhered flashing for use as a transition or rough opening flashing.

- Thru-wall Flashing
- Watertight Bond
- Rough Opening Flashing
- Low Temperature Application

Exceptional Durability and Performance

- Flexible 2 mil (0.05 mm) sheet of type 304 stainless steel
- 8 mils (0.2 mm) of butyl adhesive with a siliconized release liner
- Best in class puncture and tear resistance
- Install in temperatures ranging from 20 °F - 170 °F (-7 °C - 77 °C)
- Stable and air tight from -70 °F to 200 °F (21 °C - 93 °C)
- Class A, ASTM E84 fire rated
- Resistant to mold, mildew and rot

Uses

- Thru-wall flashing for masonry and stone structural components
- Rough opening flashing
- Transition membrane (air barriers, WRB, roofing membranes, plaza and below grade waterproofing)
- Curtain wall perimeter flashing
- Window and door pan fabrication
- Jamb closure flashing
- Roof to parapet flashing

Compatibility

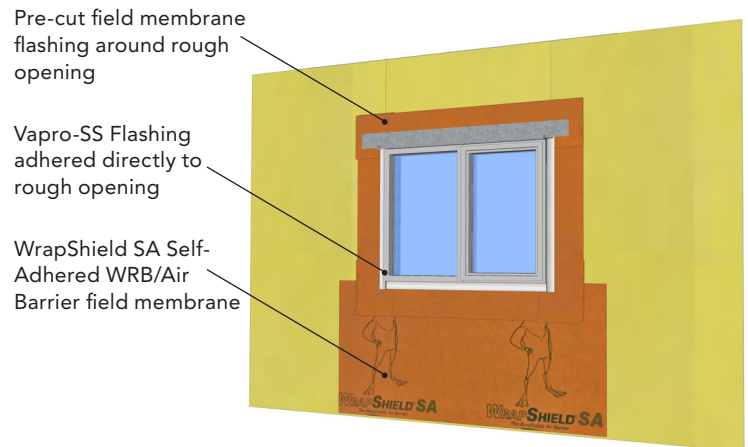
- Use with all VaproShield materials
- Compatible with: spray polyurethane foam, exterior rigid insulation, exterior gypsum, plywood, concrete, metals
- Available in widths: 4", 6", 12", 18" x 50 ft. (15, 30 or 45 cm x 15.24 m)

Sustainable Design Benefits

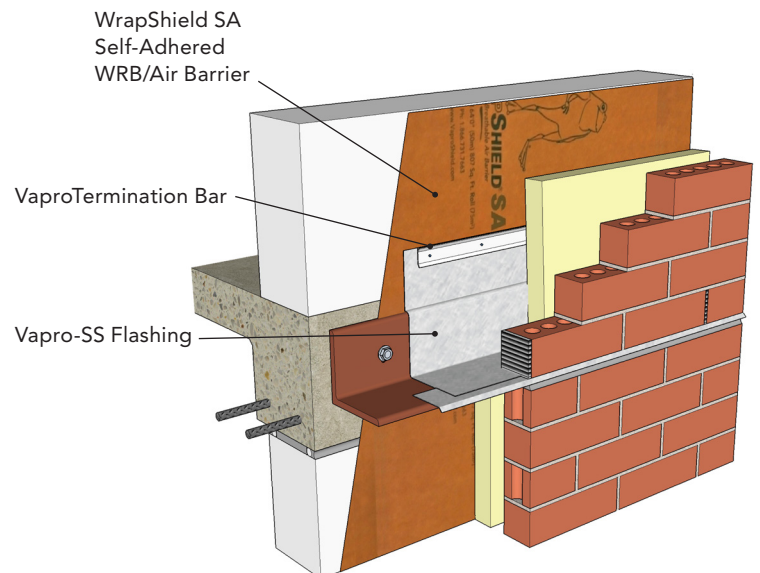
- Manufactured from 60% recycled stainless steel, designed to last for the life of the building
- Contributes to LEED points by satisfying EA Credit 1 (optimize energy performance) and EQ Credit 4.1 (low emitting materials)



Vapro-SS Flashing, Available in widths: 4", 6", 12", 18" x 50 ft. (15, 30 or 45 cm x 15.24 m)



Vapro-SS Flashing applied directly to rough opening after WrapShield SA Self-Adhered has been applied, ideal for use in all weather conditions.



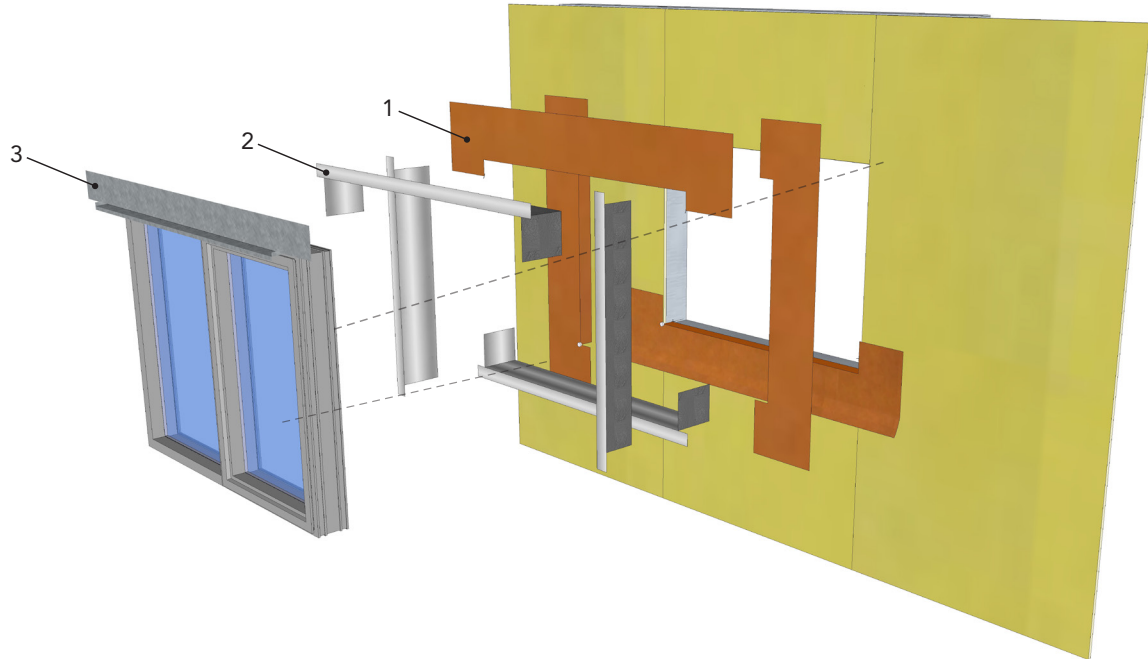
Vapro-SS Flashing installed in a thru-wall application with integrated WrapShield SA Self-Adhered WRB/Air Barrier field membrane.

Fast, Simple Two Component Rough Opening Flashing

VAPRO-SS FLASHING™

Manage only two components in the field, use common hand tools, minimal training, contractor friendly system.

1. Apply WrapFlashing SA Self-Adhered directly to sheathing
2. Fold Vapro-SS Flashing into sill, head and jambs over flashing
3. Install window, sealant joints, backer rod and head flashing (by others)



Thru-wall Flashing Application

