

VaproShim SA™ Self-Adhered Neoprene/EPDM accessory is used under horizontal cladding attachment components to create the desired vertical rain screen drainage plane for cladding, while sealing fastener penetrations. This simple design adds minimal cost while adding tremendous drying capacity to the building envelope.

- Creates drainage plane
- Seals fastener penetrations
- Increases drying capacity
- Universally compatible

Benefits

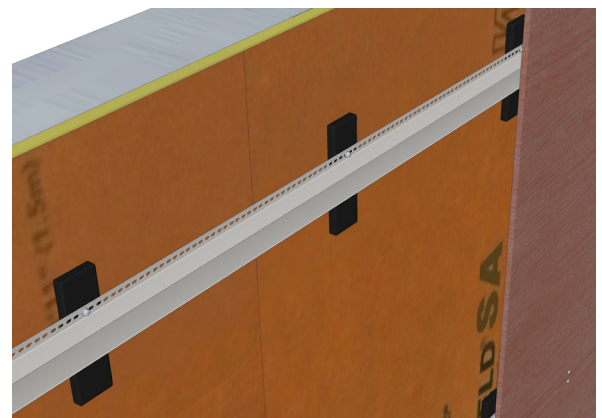
- Easily creates 1/8" or 1/4", cost effective rain screen cavity for increased drying capacity with traditional cladding choices such as metal panels, composite panels, and wood siding
- Can be used in both vertical and horizontal applications, for maximum ease of installation
- Neoprene/EPDM composition seals fastener penetrations, and is tested to ASTM E331 standard against air and water penetration
- Can be installed alongside VaproShield membranes in all weather conditions
- Adds minimal thickness the wall assembly without disruption to building plan
- Universal application, zero compatibility restrictions
- UV resistance, compatible with open joint cladding options

Technical

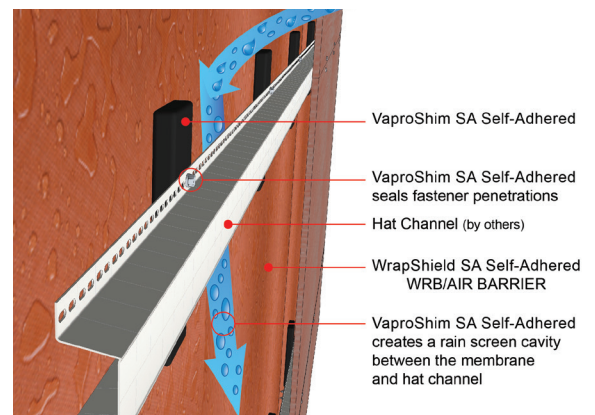
PROPERTY	VALUE
Material	Neoprene / EPDM
Temperature Range	-20° to 200° F (-29° to 93° C)
Durometer Hardness	80±5
Tensile Strength	1000 PSI
Elongation	100%
Color	Black
Size	1" width x 4" length x 1/8" thick 1" width x 4" length x 1/4" thick



Available in 2 sizes; VaproShim SA Self-Adhered 1/8"(left), 1/4"(right)



VaproShim SA Self-Adhered adhered to hat channel, when installed VaproShim SA will seal fastener penetrations and create a vertical rain screen drainage plane, adding significant drying capacity to the building envelope.



Universally compatible, simple design, VaproShim SA Self-Adhered, creates a vertical rain screen drainage plane increasing the building envelope drying capacity.