

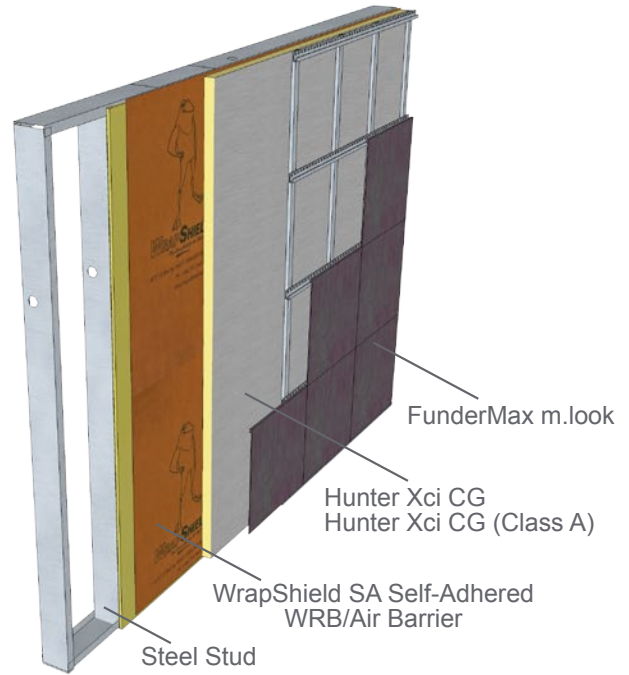
**FunderMax m.look, Xci CG and Xci CG  
(Class A), Steel Stud**

View WRB placement variations p.2

**WrapShield SA Self-Adhered** is a self-adhered, water resistive (WRB) vapor permeable air barrier sheet membrane adhered directly to substrate.

**RevealShield SA Self-Adhered** is a black, UV stable, water resistive (WRB) vapor permeable self-adhered air barrier membrane for open joint rain screen cladding systems.

Per Chapter 26 of the International Building Code, the wall assembly shall be tested in accordance with and comply with the acceptance criteria of NFPA 285. The listed assemblies in this document have met that criteria according to Hunter Panels. Visit [hunterpanels.com](http://hunterpanels.com) for verification.



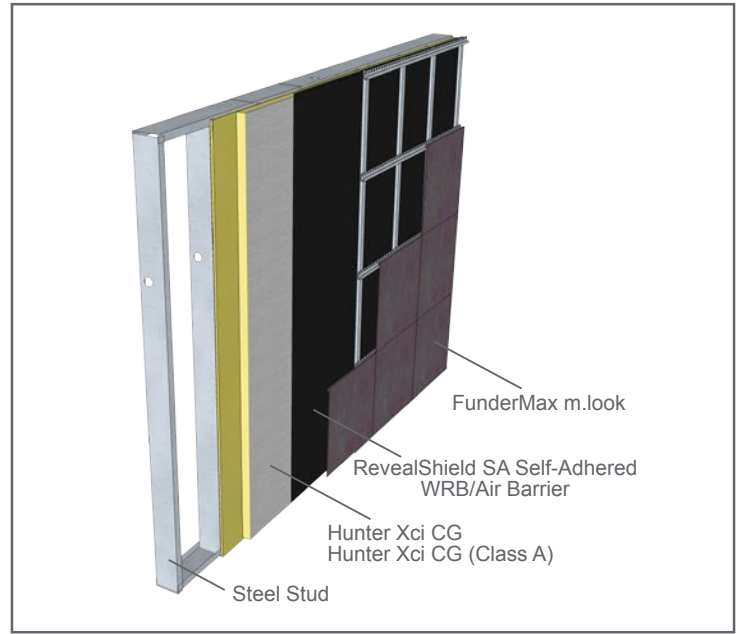
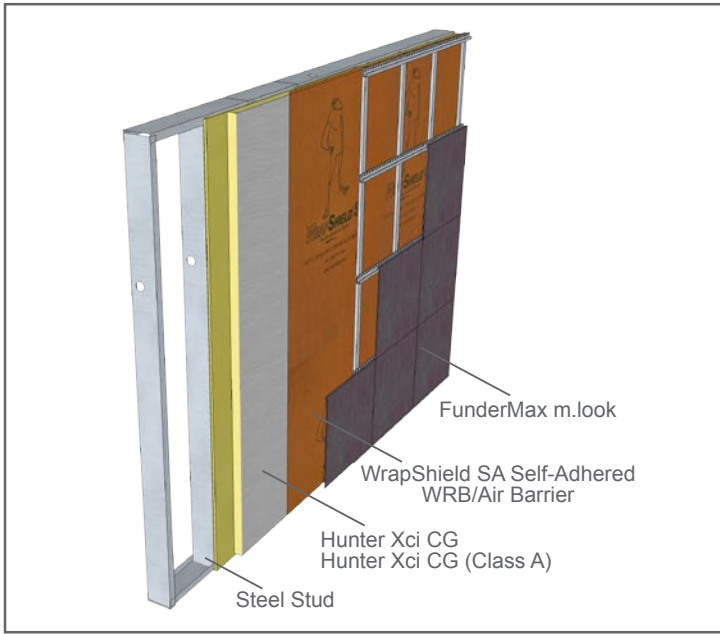
Comprehensive details available at [VaproShield.com](http://VaproShield.com).  
Illustration for explanatory purposes only.

Wall Component	Materials
<b>Base Wall System</b>	Steel Stud — 1 layer 5/8" thick Type X Gypsum wallboard on interior, installed over steel studs: minimum 3 5/8" depth, minimum 22 gauge at a maximum of 24 inch o.c. with lateral bracing every 4 ft. vertically.
<b>Approved Exterior Finish</b>	FunderMax m.look—minimum 1/4" thick using any standard installation technique
<b>Material Options</b>	1) 3.5" max thickness of Hunter Xci Foil (Class A) or Hunter Xci 286 2) 4" max thickness of Hunter Xci Foil (Class A) or Hunter Xci 286 with non-combustible claddings
<b>Floorline Firestopping</b>	Not Applicable
<b>Stud Cavity</b>	Not Applicable
<b>Exterior Sheathing</b>	Not Applicable
<b>Weather Resistive Membrane Applied to Base Wall</b>	VaproShield WrapShield SA Self-Adhered, RevealShield SA Self-Adhered
<b>Weather Resistive Membrane Applied to Exterior Insulation</b>	VaproShield WrapShield SA Self-Adhered, RevealShield SA Self-Adhered

The location and number of WRB's in the wall assembly are determined by the architect.  
See p.2 for additional illustrations showing VaproShield WRB/Air Barrier placement.

## VaproShield WRB/Air Barrier Placement Variations

as per Hunter NFPA 285 Test Data



Comprehensive details available at [VaproShield.com](http://VaproShield.com).  
Illustration for explanatory purposes only.