

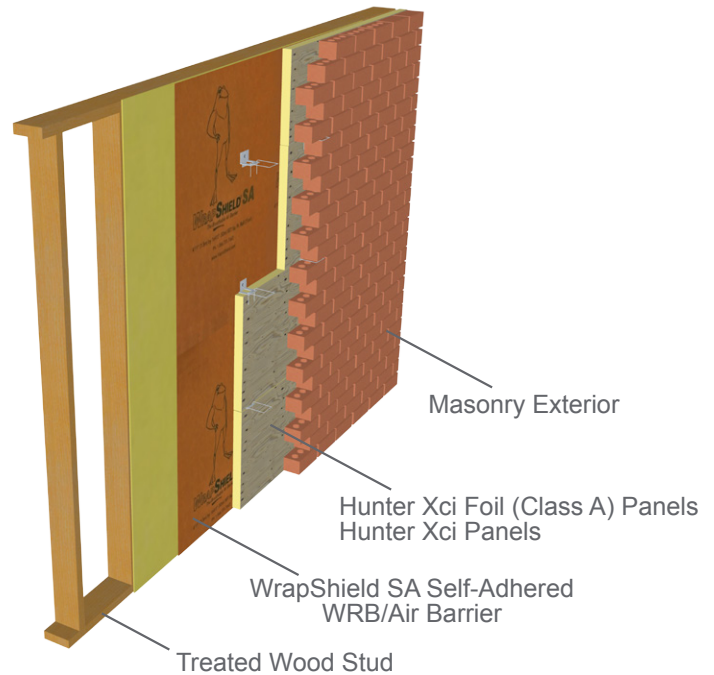
**Masonry - Thin Brick, Xci Ply
and Xci Ply (Class A), Treated Wood Stud**

View WRB placement variations p.2

WrapShield SA Self-Adhered is a self-adhered, water resistive (WRB) vapor permeable air barrier sheet membrane adhered directly to substrate.

RevealShield SA Self-Adhered is a black, UV stable, water resistive (WRB) vapor permeable self-adhered air barrier membrane for open joint rain screen cladding systems.

Per Chapter 26 of the International Building Code, the wall assembly shall be tested in accordance with and comply with the acceptance criteria of NFPA 285. The listed assemblies in this document have met that criteria according to Hunter Panels. Visit hunterpanels.com for verification.



Comprehensive details available at VaproShield.com.
Illustration for explanatory purposes only.

Wall Component	Materials
Base Wall System	FRTW (Fire-retardant-treated wood) studs: min nominal 2x4 dimension, spaced 24" o.c. (max) 5/8" type X Gypsum Wallboard Interior and Bracing as required by code.
Approved Exterior Finish	<p>Masonry—Brick veneer anchors, standard types, installed maximum 24 inches o.c. vertically. Maximum 2 inch air gap between exterior insulation and brick. Standard nominal 4 inch thick or greater, clay brick.</p> <p>Thin Brick—Thin brick set in thin set adhesive and metal lath that has been tested to and passed the ASTM E119 standards or passed NFPA 285 at ¾" minimum. may be used.</p> <p>TABS Panel II System—½" thick bricks using TABS Wall Adhesive. Glen Gery - Thin Tech Elite.</p>
Material Options	<p>1) 3.5" max thickness of Hunter Xci Foil (Class A) or Hunter Xci 286</p> <p>2) 4" max thickness of Hunter Xci Foil (Class A) or Hunter Xci 286 with non-combustible claddings¹</p>
Floorline Firestopping	Not Applicable
Stud Cavity	Not Applicable
Exterior Sheathing	Not Applicable
Weather Resistive Membrane Applied to Base Wall	Vaproshield Wrapshield SA, RevealShield SA
Weather Resistive Membrane Applied to Exterior Insulation	Vaproshield Wrapshield SA, RevealShield SA

The location and number of WRB's in the wall assembly are determined by the architect.
See p.2 for additional illustrations showing VaproShield WRB/Air Barrier placement.