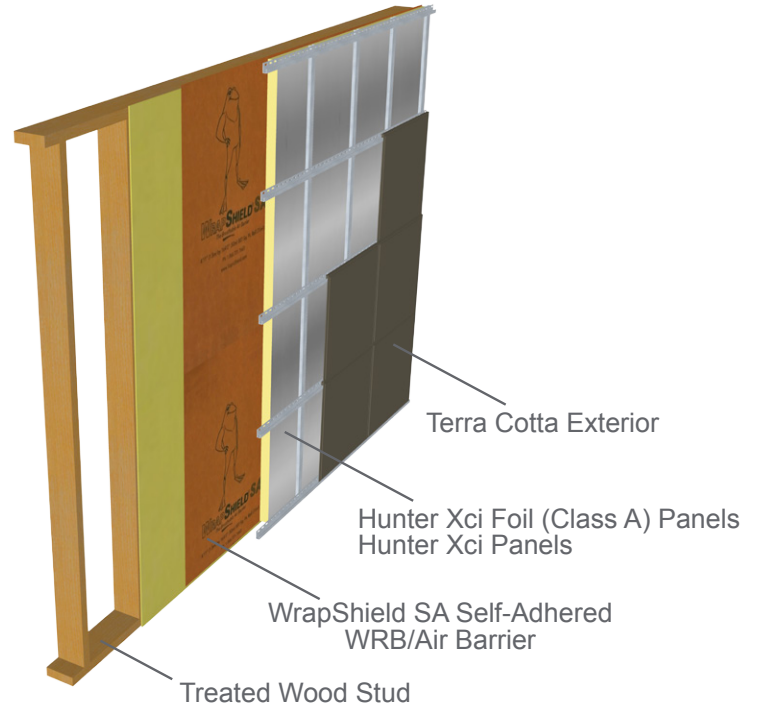


**Fiber Cement - Terra Cotta Cladding, Xci Ply and Xci Ply (Class A), Treated Wood Stud**  
View WRB placement variations p.2

**WrapShield SA Self-Adhered** is a self-adhered, water resistive (WRB) vapor permeable air barrier sheet membrane adhered directly to substrate.

**RevealShield SA Self-Adhered** is a black, UV stable, water resistive (WRB) vapor permeable self-adhered air barrier membrane for open joint rain screen cladding systems.

Per Chapter 26 of the International Building Code, the wall assembly shall be tested in accordance with and comply with the acceptance criteria of NFPA 285. The listed assemblies in this document have met that criteria according to Hunter Panels. Visit [hunterpanels.com](http://hunterpanels.com) for verification.



Comprehensive details available at [VaproShield.com](http://VaproShield.com).  
Illustration for explanatory purposes only.

**Wall Component**

**Materials**

**Base Wall System**

FRTW (Fire-retardant-treated wood) studs: min nominal 2x4 dimension, spaced 24" o.c. (max) 5/8" type X Gypsum Wallboard Interior and Bracing as required by code.

**Approved Exterior Finish**

**Fiber Cement**—Fiber Cement Board siding. Any standard installation technique can be used.  
**Terra Cotta Cladding**—Use any Terra Cotta Cladding System in which Terra Cotta is minimum 1/2". Any non-open joint installation technique or ventilated shiplap may be used.  
**Autoclaved Aerated Concrete**—AAC panels that have successfully passed NFPA 285 criteria.

**Material Options**

- 1) 3.5" max thickness of Hunter Xci Foil (Class A) or Hunter Xci 286
- 2) 4" max thickness of Hunter Xci Foil (Class A) or Hunter Xci 286 with non-combustible claddings<sup>1</sup>

**Floorline Firestopping**

Not Applicable

**Stud Cavity**

Not Applicable

**Exterior Sheathing**

Not Applicable

**Weather Resistive Membrane Applied to Base Wall**

Vaproshield Wrapshield SA, RevealShield SA

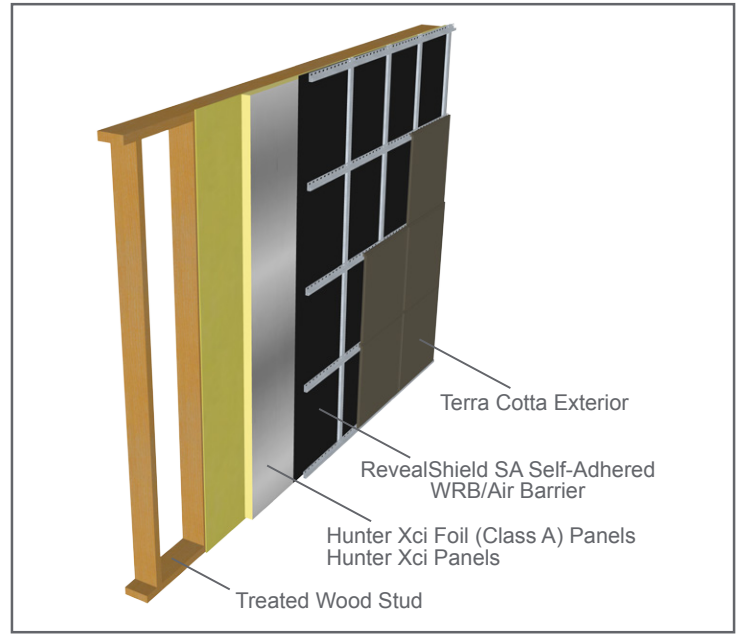
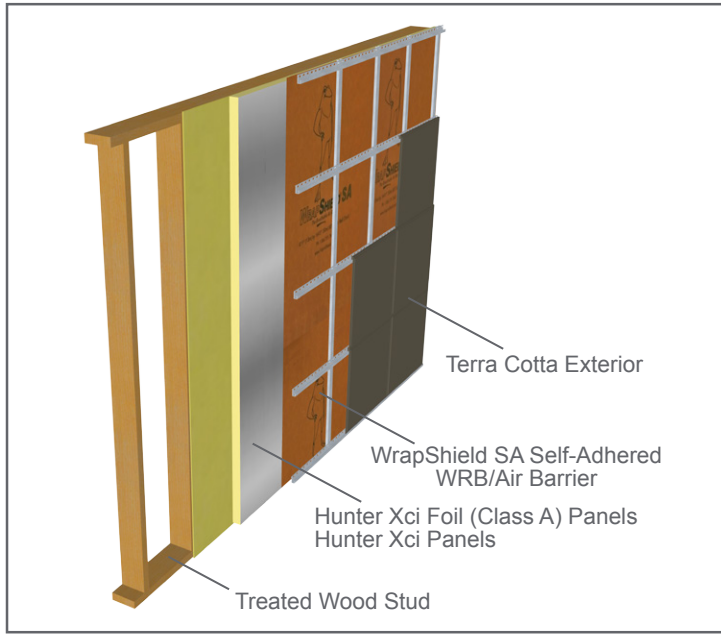
**Weather Resistive Membrane Applied to Exterior Insulation**

Vaproshield Wrapshield SA, RevealShield SA

The location and number of WRB's in the wall assembly are determined by the architect.  
See p.2 for additional illustrations showing VaproShield WRB/Air Barrier placement.

## VaproShield WRB/Air Barrier Placement Variations

as per Hunter NFPA 285 Test Data



Comprehensive details available at [VaproShield.com](http://VaproShield.com).  
Illustration for explanatory purposes only.