

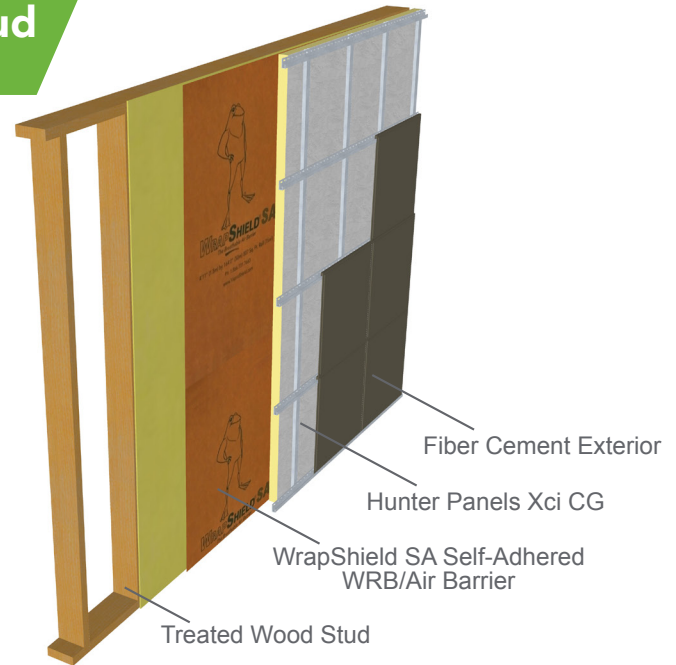
Fiber Cement, Xci CG, Treated Wood Stud

View WRB placement variations p.2

WrapShield SA Self-Adhered is a self-adhered, water resistive (WRB) vapor permeable air barrier sheet membrane adhered directly to substrate.

RevealShield SA Self-Adhered is a black, UV stable, water resistive (WRB) vapor permeable self-adhered air barrier membrane for open joint rain screen cladding systems.

Per Chapter 26 of the International Building Code, the wall assembly shall be tested in accordance with and comply with the acceptance criteria of NFPA 285. The listed assemblies in this document have met that criteria according to Hunter Panels. Visit hunterpanels.com for verification.



Comprehensive details available at VaproShield.com.
Illustration for explanatory purposes only.

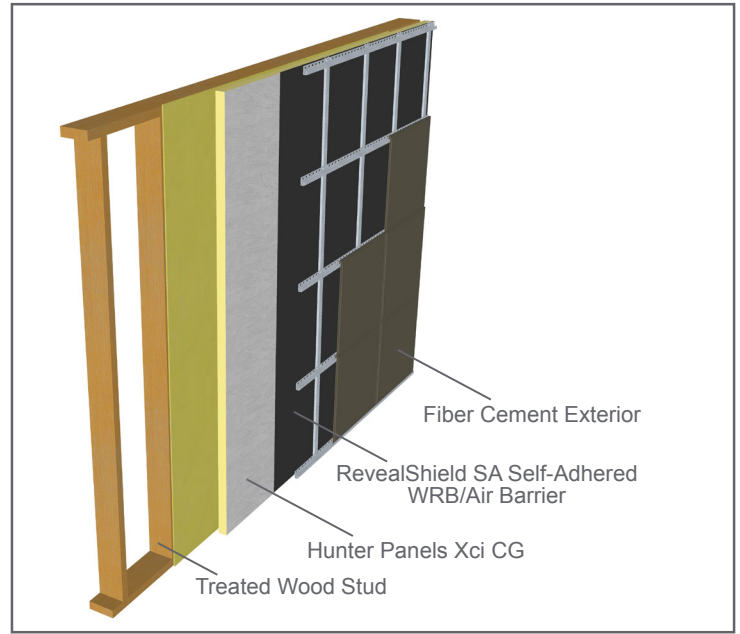
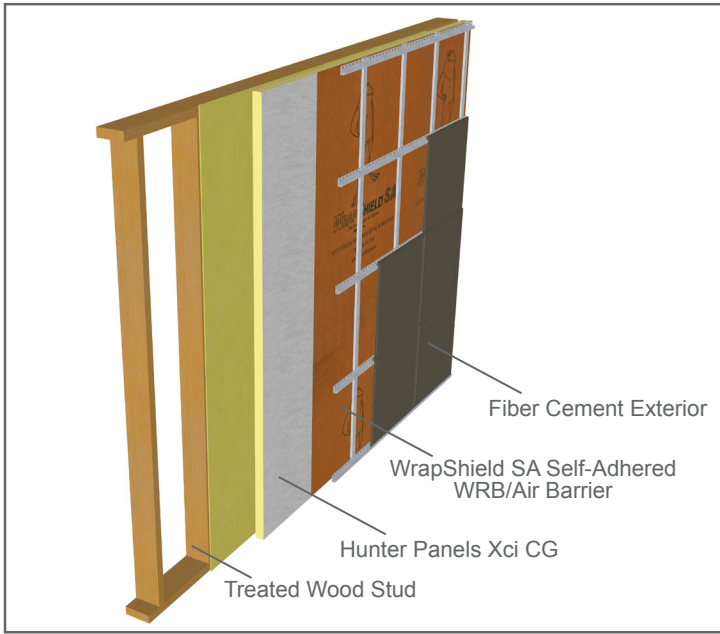
Wall Component	Materials
Base Wall System	FRTW (Fire-retardant-treated wood) studs: min nominal 2x4 dimension, spaced 24" o.c. (max) 5/8" type X Gypsum Wallboard Interior and Bracing as required by code.
Approved Exterior Finish	<p>Fiber Cement—Fiber Cement Board siding. Any standard installation technique can be used</p> <p>Terra Cotta Cladding—Use any Terra Cotta Cladding System in which Terra Cotta is minimum 1/2". Any non-open joint installation technique or ventilated shiplap may be used.</p> <p>Autoclaved Aerated Concrete—AAC panels that have successfully passed NFPA 285 criteria.</p>
Material Options	<p>1) 3.5" max thickness of Hunter Xci CG</p> <p>2) 4" max thickness of Hunter Xci CG with non-combustible claddings</p>
Floorline Firestopping	Mineral fiber based safing insulation in each cavity at the floor line. Safing thickness must match cavity depth. Or Solid FRTW blocking at floor line in accordance with building code requirements for Type III construction.
Stud Cavity	Any noncombustible insulation, Covestro BaySeal CC X or CC CP**, BASF Walltite**, NCFI InsulBlock SPF**, Icynene MD-C-200v3 (ProSeal) up to 5 1/2" ** or None
Exterior Sheathing	1/2" (min) thick exterior gypsum sheathing OR 1/2" (min) FRTW structural panels in Type III construction. OR None*
Weather Resistive Membrane Applied to Base Wall	VaproShield WrapShield SA Self-Adhered, RevealShield SA Self-Adhered
Weather Resistive Membrane Applied to Exterior Insulation	VaproShield WrapShield SA Self-Adhered, RevealShield SA Self-Adhered

The location and number of WRB's in the wall assembly are determined by the architect. See p.2 for additional illustrations showing VaproShield WRB/Air Barrier placement.



VaproShield WRB/Air Barrier Placement Variations

as per Hunter NFPA 285 Test Data



Comprehensive details available at VaproShield.com.
Illustration for explanatory purposes only.