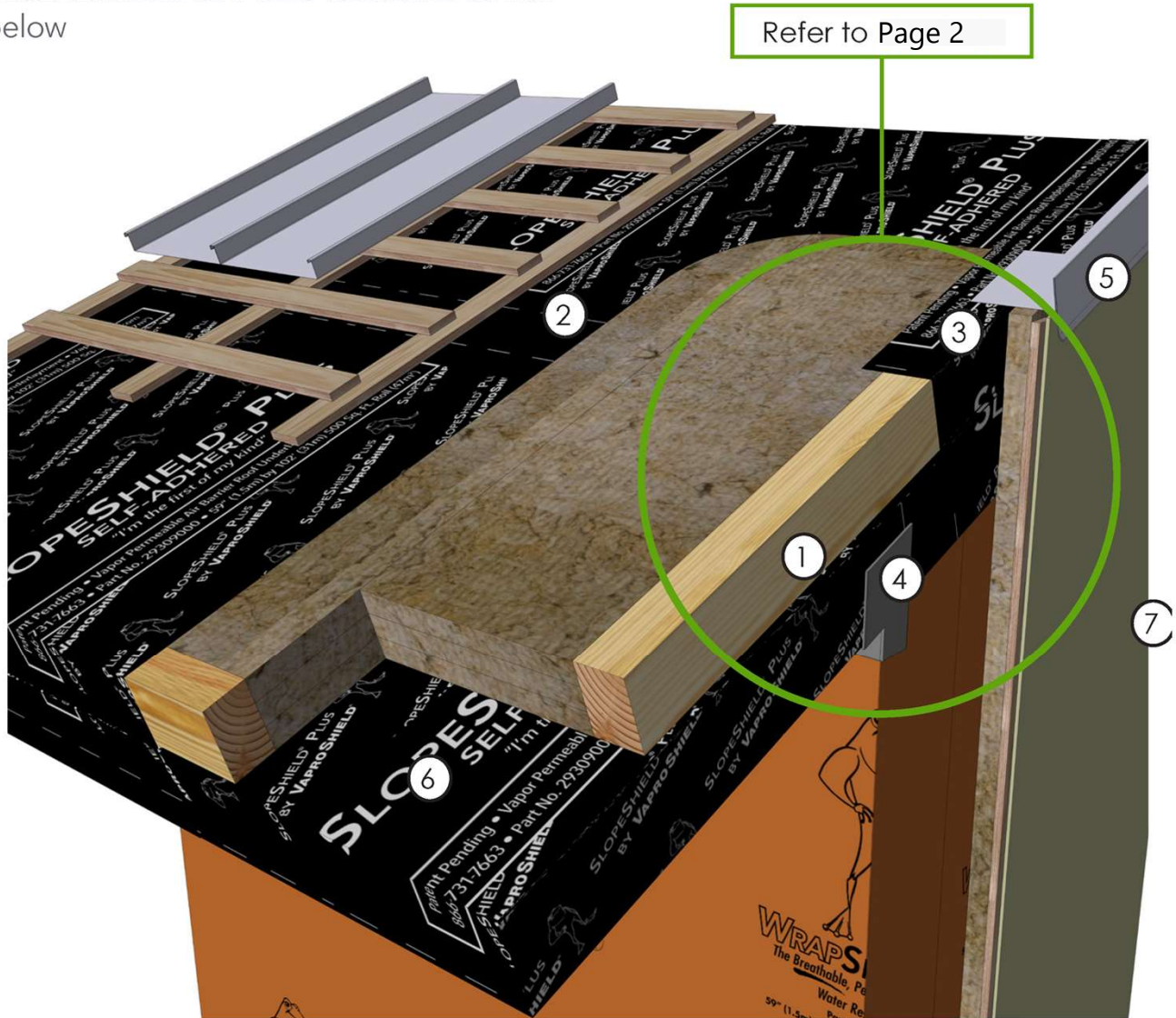


(listed exterior to interior)

1. Wood blocking/nailer
2. **SLOPESHIELD® PLUS SELF-ADHERED**, roof underlayment (water barrier)
3. **SLOPESHIELD® PLUS SELF-ADHERED**, roof edge flashing
4. **VAPROLIQUI-FLASH™** liquid-applied flashing a minimum of 2 inches (51 mm) onto CLT and **WRAPSHIELD SA® SELF-ADHERED/ REVEALSHIELD SA™ SELF-ADHERED** at wall below
5. Sheet-metal rake flashing
6. **SLOPESHIELD® PLUS SELF-ADHERED**, air barrier and temporary moisture protection
7. Wall assembly; see CLT Wall Design and Best Practices starting on page 26



## CLT Metal Roof Rake and Eaves ( $\geq 2:12$ pitch)



### DISCLAIMER

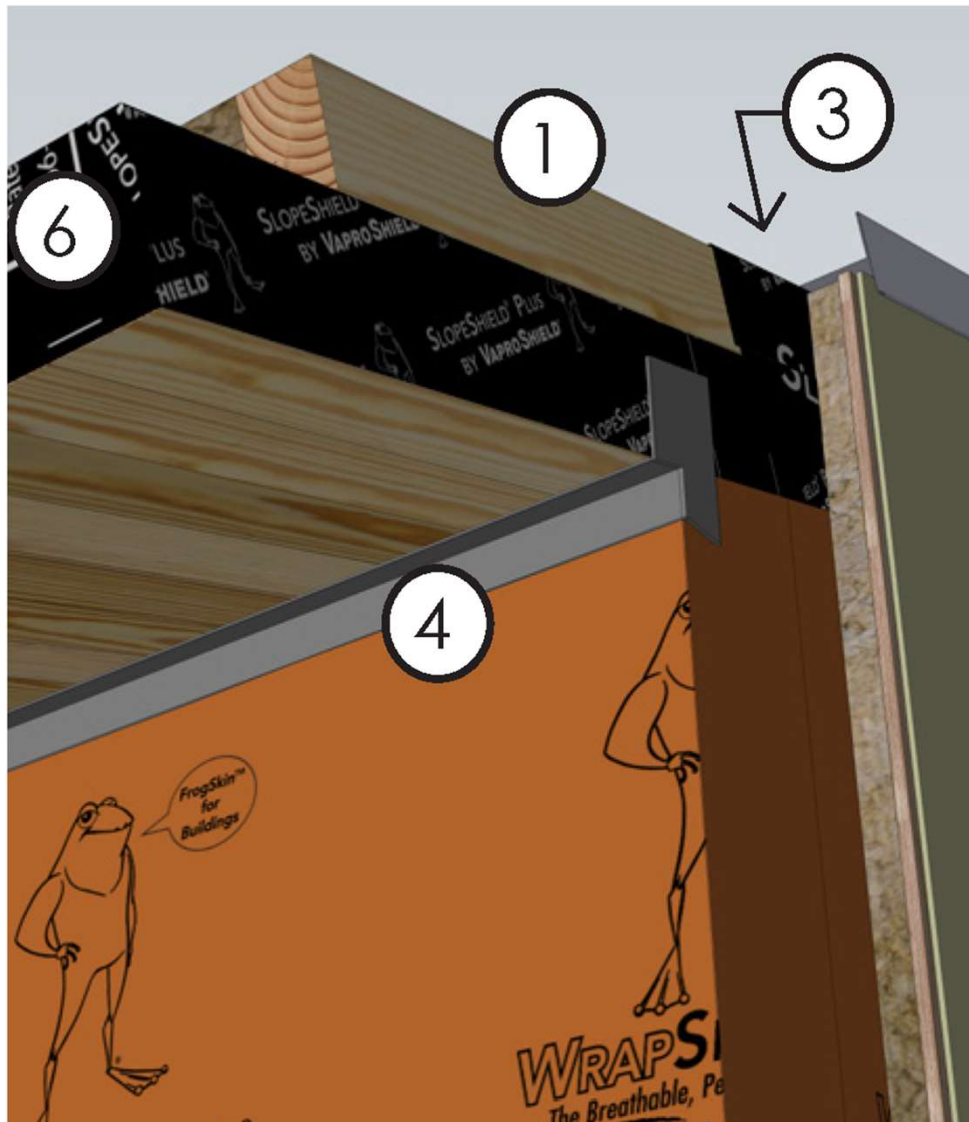
Detail sketch is generic, representing suggested best practices for VaproShield materials, and does not represent a specific job site condition and therefore may not be applicable to certain projects. Detail sketch is designed for use as a reference and must be approved by the designer/consultant of record for each project prior to installation by the subcontractor. Changes and approvals of VaproShield details are the sole responsibility of the designer/consultant of record. VaproShield is not the designer of record for building enclosure details and takes no responsibility for the accuracy or interpretation of actual project site conditions.

DRAWN BY: RDH

DATE: 5/14/19

REF: 224

Always check [www.VaproShield.com](http://www.VaproShield.com) for the latest details and installation instructions



(listed exterior to interior)

1. Wood blocking/nailer
2. **SLOPESHIELD® PLUS SELF-ADHERED**, roof underlayment (water barrier)
3. **SLOPESHIELD® PLUS SELF-ADHERED**, roof edge flashing
4. **VAPROLIQUI-FLASH™** liquid-applied flashing a minimum of 2 inches (51 mm) onto CLT and **WRAPSHIELD SA® SELF-ADHERED/ REVEALSHIELD SA™ SELF-ADHERED** at wall below
5. Sheet-metal rake flashing
6. **SLOPESHIELD® PLUS SELF-ADHERED**, air barrier and temporary moisture protection
7. Wall assembly; see CLT Wall Design and Best Practices starting on page 26

## CLT Metal Roof Rake and Eaves ( $\geq 2:12$ pitch)



### DISCLAIMER

Detail sketch is generic, representing suggested best practices for VaproShield materials, and does not represent a specific job site condition and therefore may not be applicable to certain projects. Detail sketch is designed for use as a reference and must be approved by the designer/ consultant of record for each project prior to installation by the subcontractor. Changes and approvals of VaproShield details are the sole responsibility of the designer/consultant of record. VaproShield is **not** the designer of record for building enclosure details and takes no responsibility for the accuracy or interpretation of actual project site conditions.

DRAWN BY: RDH

DATE: 5/14/19

REF: 224

Always check [www.VaproShield.com](http://www.VaproShield.com) for the latest details and installation instructions