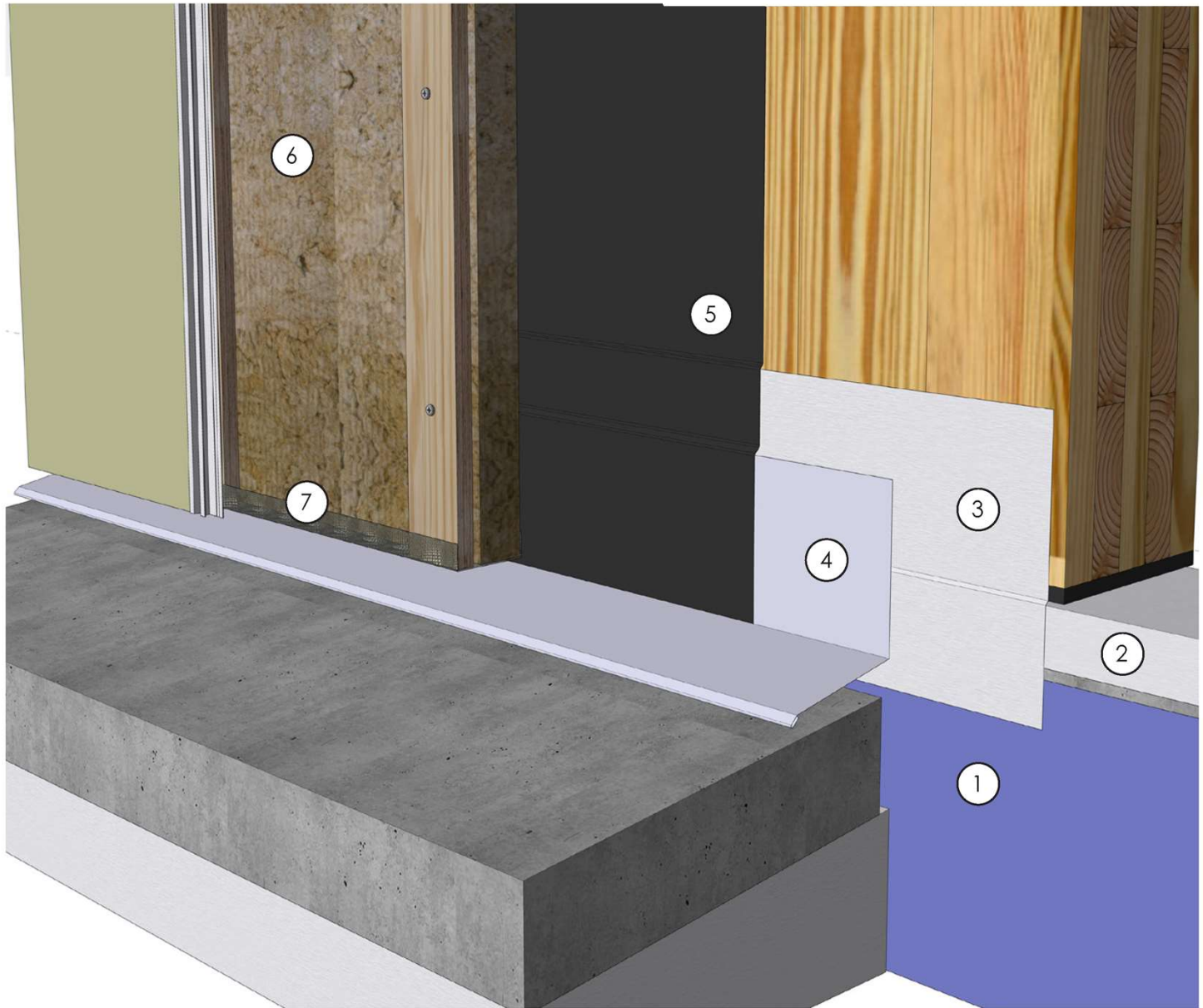


(listed exterior to interior)

1. Below-grade waterproofing or damp proofing
2. **VAPRO-SS FLASHING™** capillary break
3. **VAPRO-SS FLASHING™** lapped a minimum of 3 inches (76 mm) over the below-grade waterproofing/damp proofing

4. Base of wall sheet-metal flashing
5. **WRAPSHIELD SA® SELF-ADHERED** or **REVEALSHIELD SA™ SELF-ADHERED** field membrane, lapped a minimum of 3 inches (76 mm) over the **VAPRO-SS FLASHING™** and the back leg of the sheet-metal flashing
6. Insulation and cladding components
7. Insect screen



CLT Base of Wall Detail



DISCLAIMER

Detail sketch is generic, representing suggested best practices for VaproShield materials, and does not represent a specific job site condition and therefore may not be applicable to certain projects. Detail sketch is designed for use as a reference and must be approved by the designer/consultant of record for each project prior to installation by the subcontractor. Changes and approvals of VaproShield details are the sole responsibility of the designer/consultant of record. VaproShield is **not** the designer of record for building enclosure details and takes no responsibility for the accuracy or interpretation of actual project site conditions.

DRAWN BY: RDH

DATE: 5/14/19

REF: 221

Always check www.VaproShield.com for the latest details and installation instructions