



WRAPSHIELD SA® SELF-ADHERED or
REVEALSHIELD SA™ SELF-ADHERED sill piece applied
 directly to the CLT panel and installed into the rough
 opening to the depth of the air and water seal for the
 window system.

CLT Window Flashing



DISCLAIMER

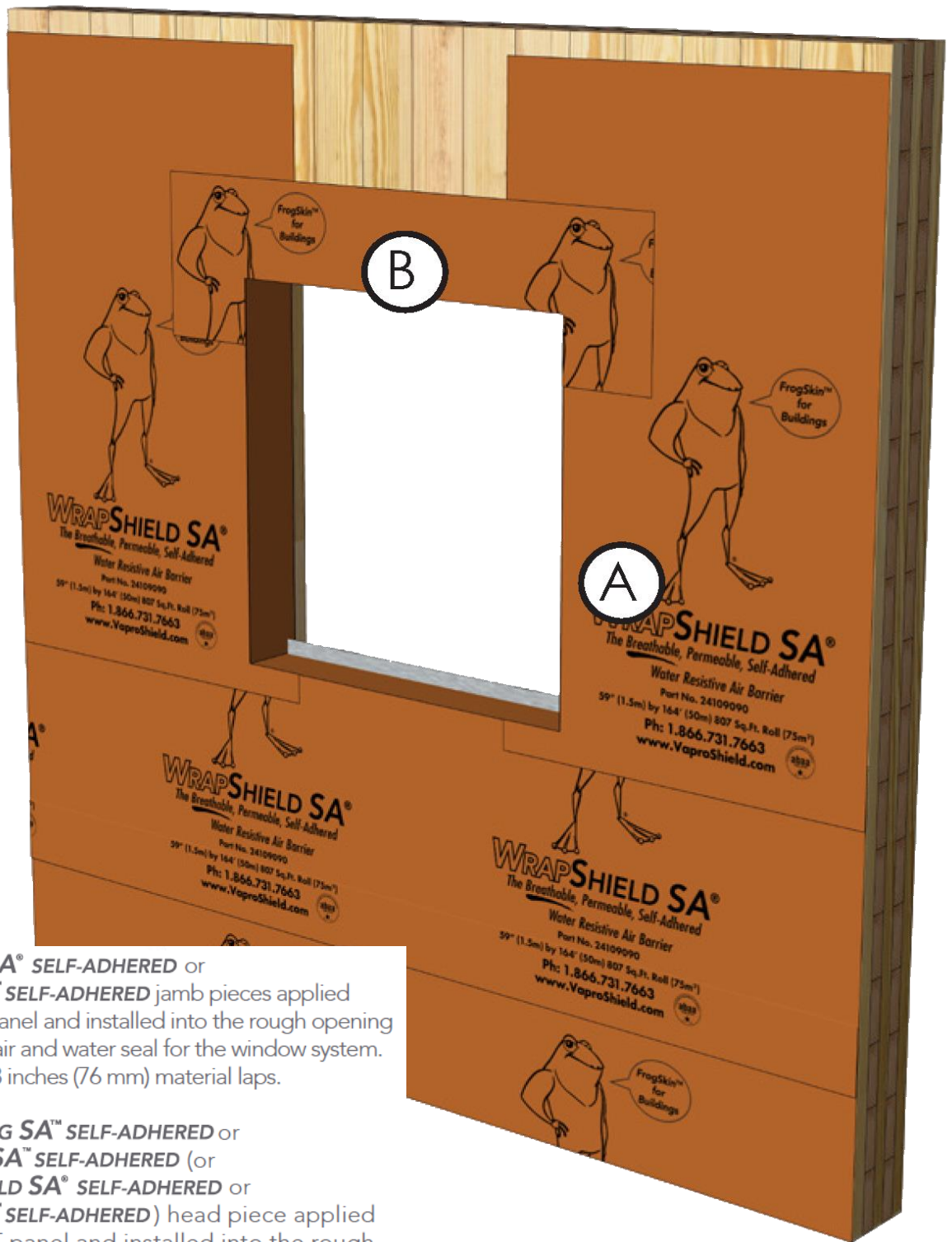
Detail sketch is generic, representing suggested best practices for VaproShield materials, and does not represent a specific job site condition and therefore may not be applicable to certain projects. Detail sketch is designed for use as a reference and must be approved by the designer/consultant of record for each project prior to installation by the subcontractor. Changes and approvals of VaproShield details are the sole responsibility of the designer/consultant of record. VaproShield is **not** the designer of record for building enclosure details and takes no responsibility for the accuracy or interpretation of actual project site conditions.

DRAWN BY: RDH

DATE: 5/15/19

REF: 219

Always check www.VaproShield.com for the latest details and installation instructions



Step 2 (A) **WRAPSHIELD SA® SELF-ADHERED** or **REVEALSHIELD SA™ SELF-ADHERED** jamb pieces applied directly to the CLT panel and installed into the rough opening to the depth of the air and water seal for the window system. Maintain minimum 3 inches (76 mm) material laps.

(B) **WRAPFLASHING SA™ SELF-ADHERED** or **REVEALFLASHING SA™ SELF-ADHERED** (or strip of **WRAPSHIELD SA® SELF-ADHERED** or **REVEALSHIELD SA™ SELF-ADHERED**) head piece applied directly to the CLT panel and installed into the rough opening to the depth of the planned primary air and water seal for the window system.

CLT Window Flashing



DISCLAIMER

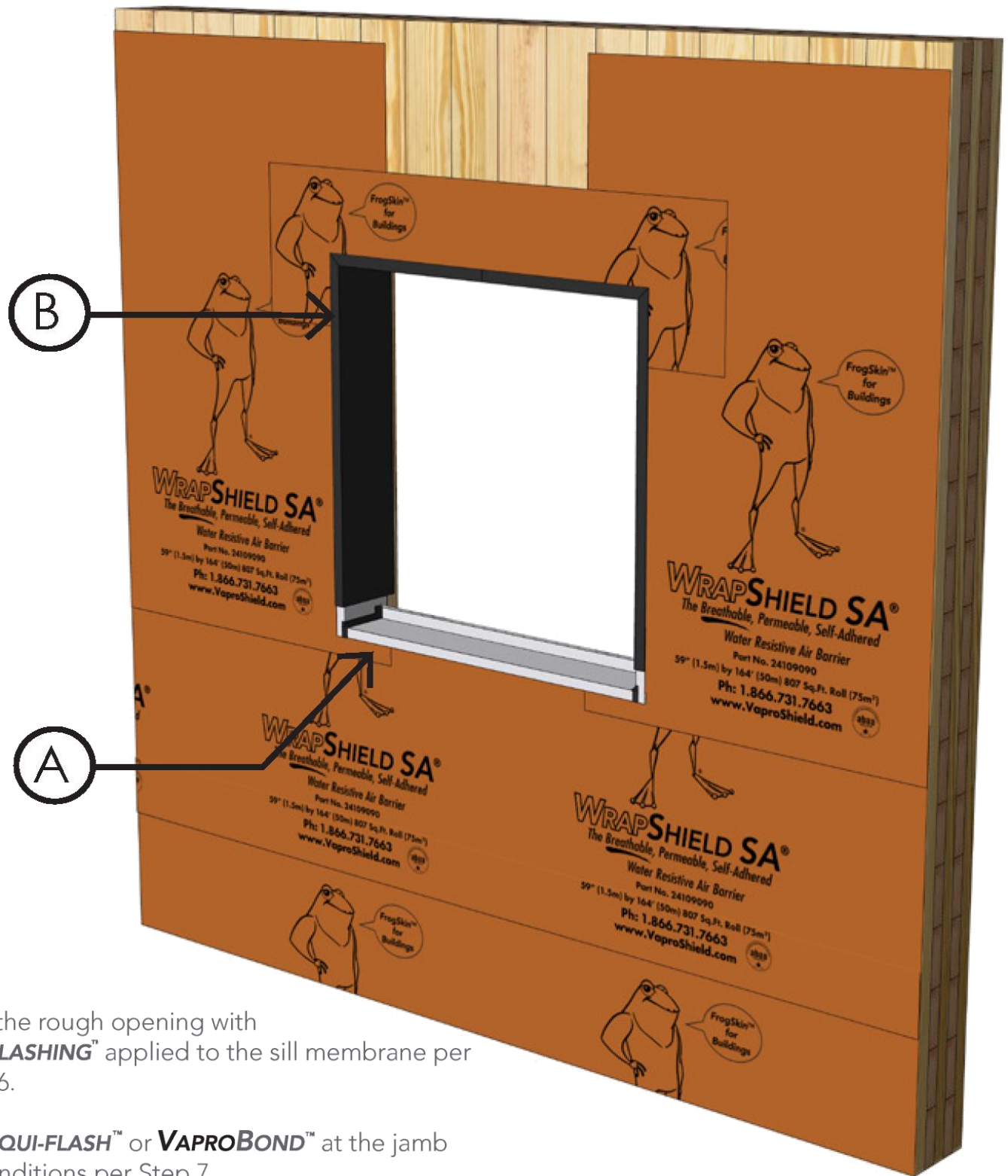
Detail sketch is generic, representing suggested best practices for VaproShield materials, and does not represent a specific job site condition and therefore may not be applicable to certain projects. Detail sketch is designed for use as a reference and must be approved by the designer/ consultant of record for each project prior to installation by the subcontractor. Changes and approvals of VaproShield details are the sole responsibility of the designer/consultant of record. VaproShield is **not** the designer of record for building enclosure details and takes no responsibility for the accuracy or interpretation of actual project site conditions.

DRAWN BY: RDH

DATE: 5/15/19

REF: 219

Always check www.VaproShield.com for the latest details and installation instructions



(A) Prepare the rough opening with **VAPRO-SS FLASHING™** applied to the sill membrane per Steps 5 and 6.

(B) **VAPROLIQUI-FLASH™** or **VAPROBOND™** at the jamb and head conditions per Step 7.

CLT Window Flashing



DISCLAIMER

Detail sketch is generic, representing suggested best practices for VaproShield materials, and does not represent a specific job site condition and therefore may not be applicable to certain projects. Detail sketch is designed for use as a reference and must be approved by the designer/consultant of record for each project prior to installation by the subcontractor. Changes and approvals of VaproShield details are the sole responsibility of the designer/consultant of record. VaproShield is **not** the designer of record for building enclosure details and takes no responsibility for the accuracy or interpretation of actual project site conditions.

DRAWN BY: RDH

DATE: 5/15/19

REF: 219

Always check www.VaproShield.com for the latest details and installation instructions



VAPRO-SS FLASHING™ membrane applied over the wood blocking and head flashing.
WRAPSHIELD SA® SELF-ADHERED or **REVEALSHIELD SA™ SELF-ADHERED** field membrane from above laps the **VAPRO-SS FLASHING™** a minimum of 3 inches (76 mm).

CLT Window Flashing



DISCLAIMER

Detail sketch is generic, representing suggested best practices for VaproShield materials, and does not represent a specific job site condition and therefore may not be applicable to certain projects. Detail sketch is designed for use as a reference and must be approved by the designer/ consultant of record for each project prior to installation by the subcontractor. Changes and approvals of VaproShield details are the sole responsibility of the designer/consultant of record. VaproShield is **not** the designer of record for building enclosure details and takes no responsibility for the accuracy or interpretation of actual project site conditions.

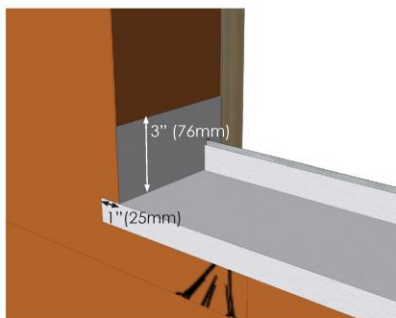
DRAWN BY: RDH

DATE: 5/15/19

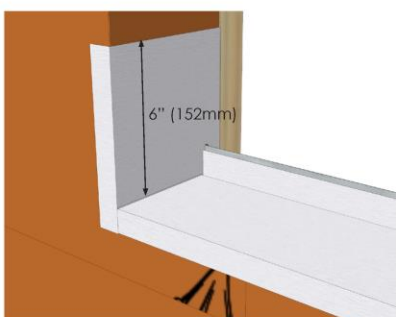
REF: 219

Always check www.VaproShield.com for the latest details and installation instructions

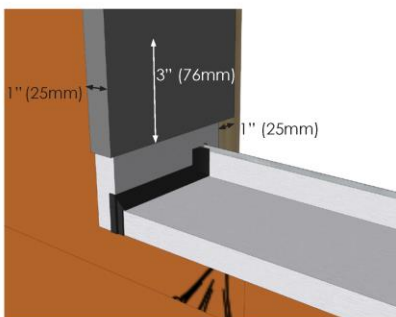
Option 1: Sill Flashing with Back Dam Angle



- Step 5** **VAPRO-SS FLASHING™** membrane at sill 1 inch (25 mm) down onto the face of the wall. **VAPRO-SS FLASHING™** to extend up the back dam angle. Fold end tabs a minimum of 3 inch (76 mm) up the jamb and notch around the back dam angle.

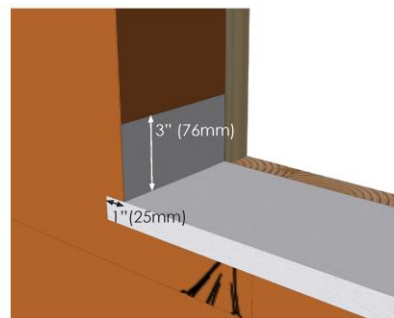


- Step 6** **VAPRO-SS FLASHING™** membrane at sill-to-jamb corners into the rough opening to the depth of the air and water seal for the window system and 1 inch (25 mm) onto the face. Corner pieces extend up jambs a minimum of 6 inches (152 mm) and are notched tight around the back dam angle.

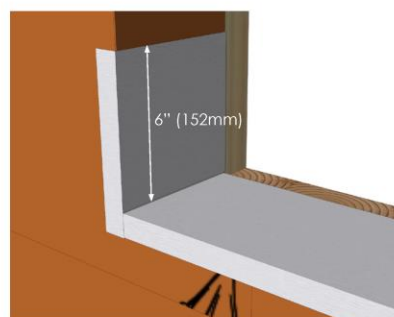


- Step 7** **VAPROLIQUI-FLASH™** or **VAPROBOND™** ½" (13 mm) tooled fillet bead at **VAPRO-SS FLASHING™** seams, including back dam angle to jamb interface. **VAPROLIQUI-FLASH™** at head and jambs a minimum of 1 inch (25 mm) onto the face, 3 inches (76 mm) onto the **VAPRO-SS FLASHING™** corners, and 1 inch (25 mm) directly onto the CLT inside the rough opening.

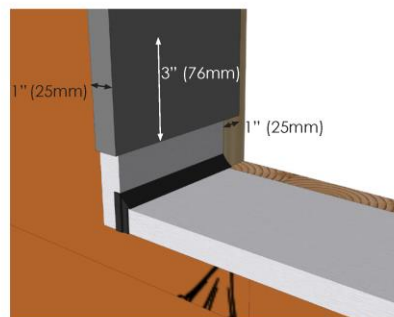
Option 2: Sill Flashing without Back Dam Angle



- Step 5** **VAPRO-SS FLASHING™** membrane at sill 1 inch (25 mm) down onto the face of the wall. **VAPRO-SS FLASHING™** to extend into the rough opening to the depth of the air and water seal for the window system. Fold end tabs a minimum of 3 inch (76 mm) up the jamb.



- Step 6** **VAPRO-SS FLASHING™** membrane at sill-to-jamb corners into the rough opening to the depth of the air and water seal for the window system and 1 inch (25 mm) onto the face. Corner pieces extend up jambs a minimum of 6 inches (152 mm).



- Step 7** **VAPROLIQUI-FLASH™** or **VAPROBOND™** ½" (13 mm) tooled fillet bead at **VAPRO-SS FLASHING™** seams. **VAPROLIQUI-FLASH™** at head and jambs a minimum of 1 inch (25 mm) onto the face, 3 inches (76 mm) onto the **VAPRO-SS FLASHING™** corners, and 1 inch (25 mm) directly onto the CLT inside the rough opening.

CLT Window Flashing

DRAWN BY: RDH

DATE: 5/15/19

REF: 219

Always check www.VaproShield.com for the latest details and installation instructions

DISCLAIMER

Detail sketch is generic, representing suggested best practices for VaproShield materials, and does not represent a specific job site condition and therefore may not be applicable to certain projects. Detail sketch is designed for use as a reference and must be approved by the designer/ consultant of record for each project prior to installation by the subcontractor. Changes and approvals of VaproShield details are the sole responsibility of the designer/consultant of record. VaproShield is **not** the designer of record for building enclosure details and takes no responsibility for the accuracy or interpretation of actual project site conditions.