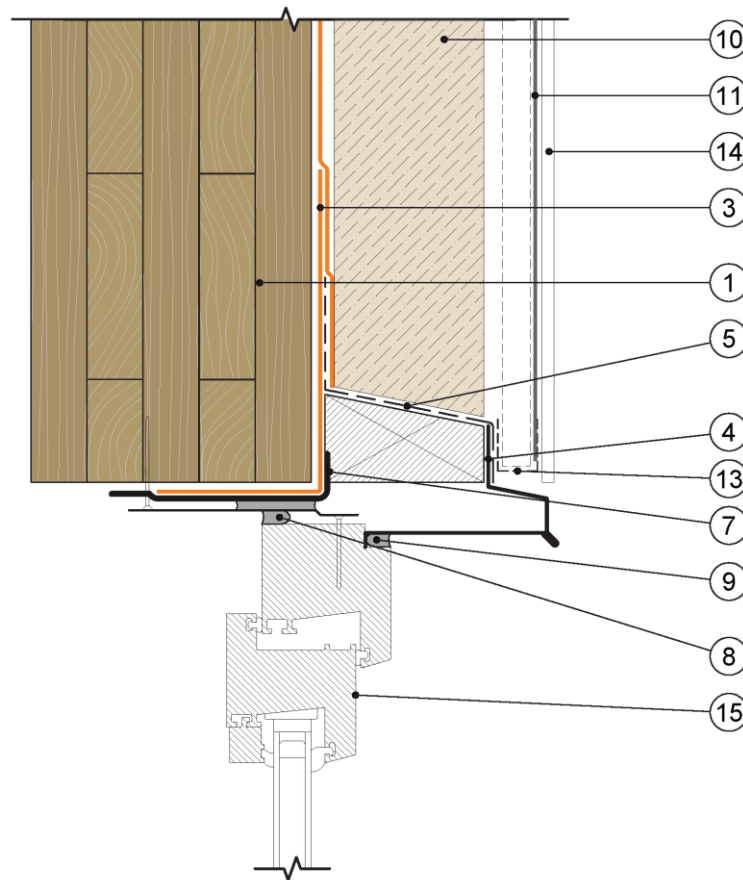


Legend

1. CLT wall panel
2. Metal back dam angle at sill
3. **WRAPFLASHING SA™ SELF-ADHERED** or **REVEALSHIELD SA™ SELF-ADHERED** (or strip of **WRAPSHIELD SA° SELF-ADHERED** or **REVEALSHIELD SA™ SELF-ADHERED**) prestrips per the **Detail 4** wrap sequence
4. Sheet-metal head flashing (sloped) with folded end dams attached to sloped wood blocking
5. **VAPRO-SS FLASHING™** membrane material
6. **VAPRO-SS FLASHING™** sill pan per the **Detail 4** wrap sequence
7. **VAPROLIQUI-FASH™** or **VAPROBOND™** at jamb and head conditions per **Detail 4** wrap sequence
8. Continuous perimeter air and water seal at window head, jamb, and sill conditions. Seal is continuous on both sides of window clips (where provided)
9. Exterior backer rod and sealant joint (not to block window weeps at sill condition)
10. Mineral fiber insulation; rigid or semi-rigid depending on the cladding attachment strategy
11. **REVEALSHIELD™ IT INTEGRATED TAPE** (behind open joint cladding systems)
12. Sheet-metal sill flashing with folded end dams
13. Insect screen
14. Cladding (open or closed joint)
15. Window on intermittent shims

Detail 3a Window head detail.



CLT Window Rough Opening



DISCLAIMER

Detail sketch is generic, representing suggested best practices for VaproShield materials, and does not represent a specific job site condition and therefore may not be applicable to certain projects. Detail sketch is designed for use as a reference and must be approved by the designer/consultant of record for each project prior to installation by the subcontractor. Changes and approvals of VaproShield details are the sole responsibility of the designer/consultant of record. VaproShield is **not** the designer of record for building enclosure details and takes no responsibility for the accuracy or interpretation of actual project site conditions.

DRAWN BY: RDH

DATE: 5/15/19

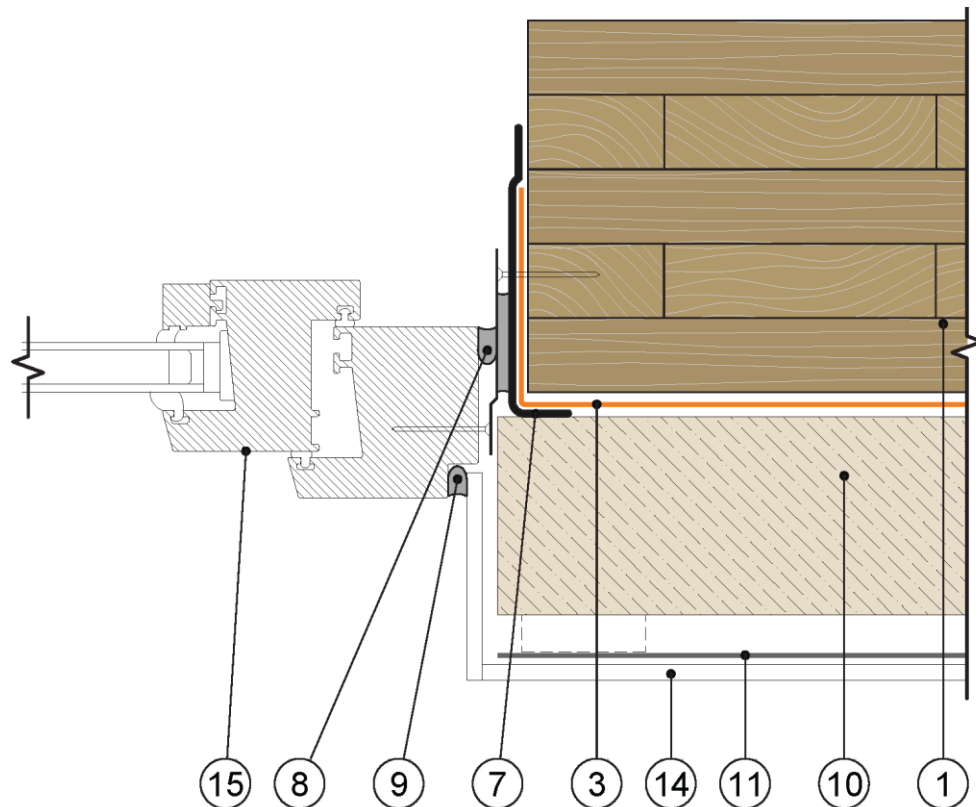
REF: 218

Always check www.VaproShield.com for the latest details and installation instructions

Legend

1. CLT wall panel
2. Metal back dam angle at sill
3. **WRAPFLASHING SA™ SELF-ADHERED** or **REVEALSHIELD SA™ SELF-ADHERED** (or strip of **WRAPSHIELD SA® SELF-ADHERED** or **REVEALSHIELD SA™ SELF-ADHERED**) prestrips per the **Detail 4** wrap sequence
4. Sheet-metal head flashing (sloped) with folded end dams attached to sloped wood blocking
5. **VAPRO-SS FLASHING™** membrane material
6. **VAPRO-SS FLASHING™** sill pan per the **Detail 4** wrap sequence
7. **VAPROLIQUI-FASH™** or **VAPROBOND™** at jamb and head conditions per **Detail 4** wrap sequence
8. Continuous perimeter air and water seal at window head, jamb, and sill conditions. Seal is continuous on both sides of window clips (where provided)
9. Exterior backer rod and sealant joint (not to block window weeps at sill condition)
10. Mineral fiber insulation; rigid or semi-rigid depending on the cladding attachment strategy
11. **REVEALSHIELD™ IT INTEGRATED TAPE** (behind open joint cladding systems)
12. Sheet-metal sill flashing with folded end dams
13. Insect screen
14. Cladding (open or closed joint)
15. Window on intermittent shims

Detail 3b Window jamb detail.



CLT Window Rough Opening



DISCLAIMER

Detail sketch is generic, representing suggested best practices for VaproShield materials, and does not represent a specific job site condition and therefore may not be applicable to certain projects. Detail sketch is designed for use as a reference and must be approved by the designer/consultant of record for each project prior to installation by the subcontractor. Changes and approvals of VaproShield details are the sole responsibility of the designer/consultant of record. VaproShield is **not** the designer of record for building enclosure details and takes no responsibility for the accuracy or interpretation of actual project site conditions.

DRAWN BY: RDH

DATE: 5/15/19

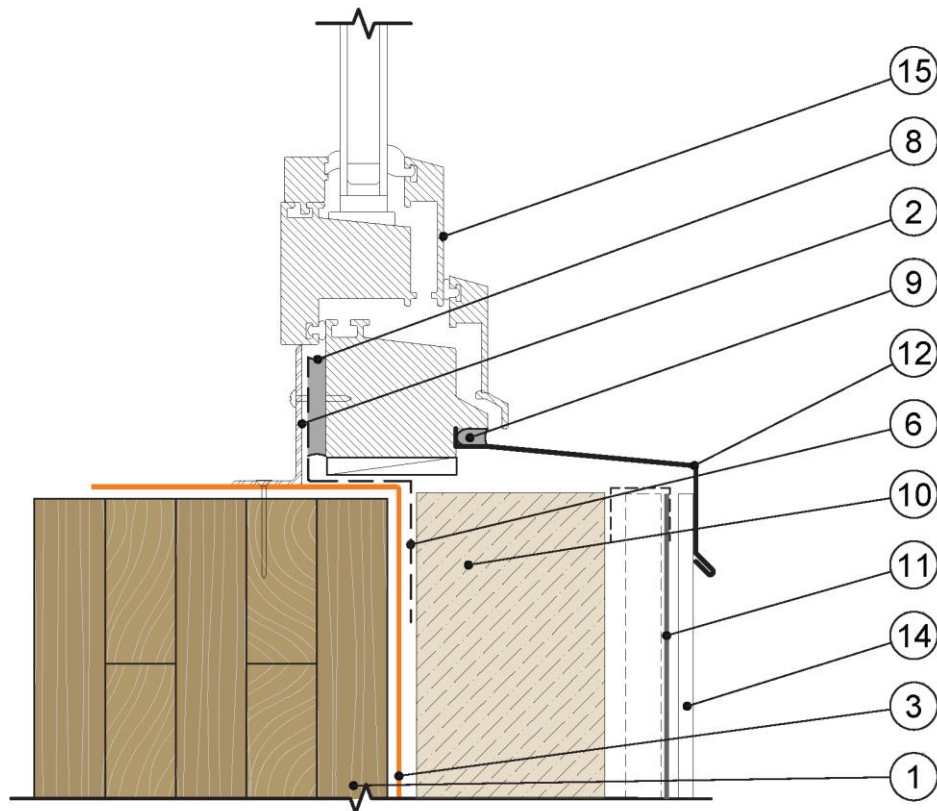
REF: 218

Always check www.VaproShield.com for the latest details and installation instructions

Legend

1. CLT wall panel
2. Metal back dam angle at sill
3. **WRAPFLASHING SA™ SELF-ADHERED** or **REVEALSHIELD SA™ SELF-ADHERED** (or strip of **WRAPSHIELD SA® SELF-ADHERED** or **REVEALSHIELD SA™ SELF-ADHERED**) prestrips per the **Detail 4** wrap sequence
4. Sheet-metal head flashing (sloped) with folded end dams attached to sloped wood blocking
5. **VAPRO-SS FLASHING™** membrane material
6. **VAPRO-SS FLASHING™** sill pan per the **Detail 4** wrap sequence
7. **VAPROLIQUI-FASH™** or **VAPROBOND™** at jamb and head conditions per **Detail 4** wrap sequence
8. Continuous perimeter air and water seal at window head, jamb, and sill conditions. Seal is continuous on both sides of window clips (where provided)
9. Exterior backer rod and sealant joint (not to block window weeps at sill condition)
10. Mineral fiber insulation; rigid or semi-rigid depending on the cladding attachment strategy
11. **REVEALSHIELD™ IT INTEGRATED TAPE** (behind open joint cladding systems)
12. Sheet-metal sill flashing with folded end dams
13. Insect screen
14. Cladding (open or closed joint)
15. Window on intermittent shims

Detail 3c Window sill detail (with back dam angle).



CLT Window Rough Opening



DISCLAIMER

Detail sketch is generic, representing suggested best practices for VaproShield materials, and does not represent a specific job site condition and therefore may not be applicable to certain projects. Detail sketch is designed for use as a reference and must be approved by the designer/consultant of record for each project prior to installation by the subcontractor. Changes and approvals of VaproShield details are the sole responsibility of the designer/consultant of record. VaproShield is **not** the designer of record for building enclosure details and takes no responsibility for the accuracy or interpretation of actual project site conditions.

DRAWN BY: RDH

DATE: 5/15/19

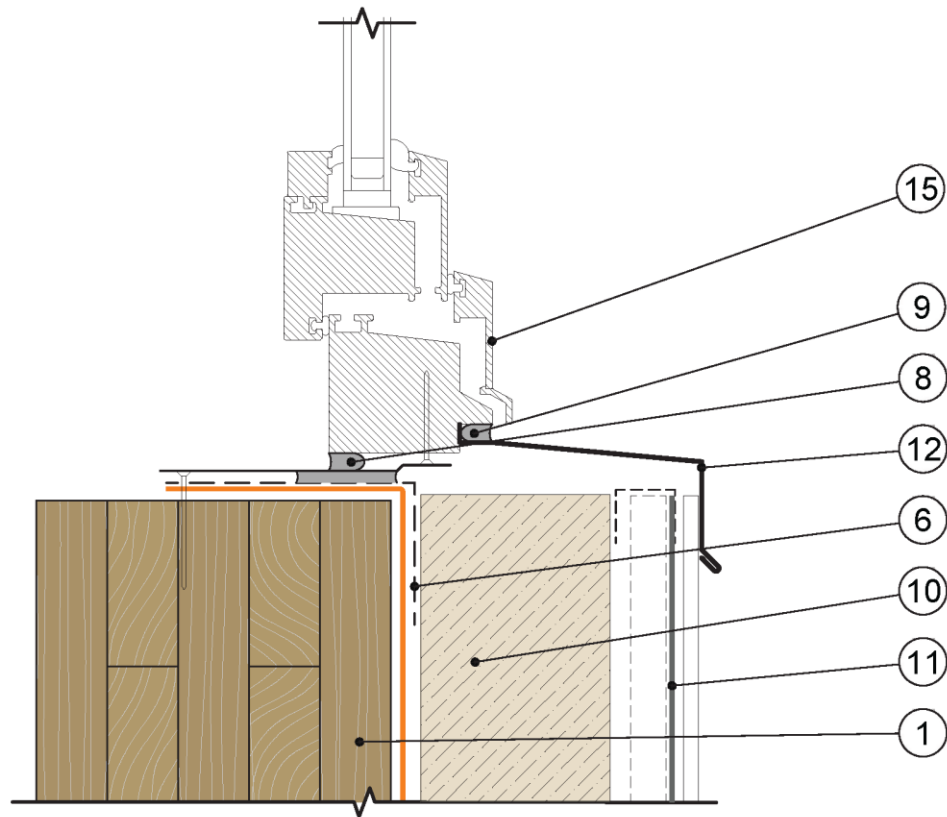
REF: 218

Always check www.VaproShield.com for the latest details and installation instructions

Legend

1. CLT wall panel
2. Metal back dam angle at sill
3. **WRAPFLASHING SA™ SELF-ADHERED** or **REVEALSHIELD SA™ SELF-ADHERED** (or strip of **WRAPSHIELD SA® SELF-ADHERED** or **REVEALSHIELD SA™ SELF-ADHERED**) prestrips per the **Detail 4** wrap sequence
4. Sheet-metal head flashing (sloped) with folded end dams attached to sloped wood blocking
5. **VAPRO-SS FLASHING™** membrane material
6. **VAPRO-SS FLASHING™** sill pan per the **Detail 4** wrap sequence
7. **VAPROLIQUI-FASH™** or **VAPROBOND™** at jamb and head conditions per **Detail 4** wrap sequence
8. Continuous perimeter air and water seal at window head, jamb, and sill conditions. Seal is continuous on both sides of window clips (where provided)
9. Exterior backer rod and sealant joint (not to block window weeps at sill condition)
10. Mineral fiber insulation; rigid or semi-rigid depending on the cladding attachment strategy
11. **REVEALSHIELD™ IT INTEGRATED TAPE** (behind open joint cladding systems)
12. Sheet-metal sill flashing with folded end dams
13. Insect screen
14. Cladding (open or closed joint)
15. Window on intermittent shims

Detail 3d Window sill detail (without back dam angle).



CLT Window Rough Opening



DISCLAIMER

Detail sketch is generic, representing suggested best practices for VaproShield materials, and does not represent a specific job site condition and therefore may not be applicable to certain projects. Detail sketch is designed for use as a reference and must be approved by the designer/consultant of record for each project prior to installation by the subcontractor. Changes and approvals of VaproShield details are the sole responsibility of the designer/consultant of record. VaproShield is **not** the designer of record for building enclosure details and takes no responsibility for the accuracy or interpretation of actual project site conditions.

DRAWN BY: RDH

DATE: 5/15/19

REF: 218

Always check www.VaproShield.com for the latest details and installation instructions