

# Panelized Construction: Field Assembly Overview



**WRAPSHIELD SA®**  
SELF-ADHERED

Place fully wrapped panel into place

#### DISCLAIMER

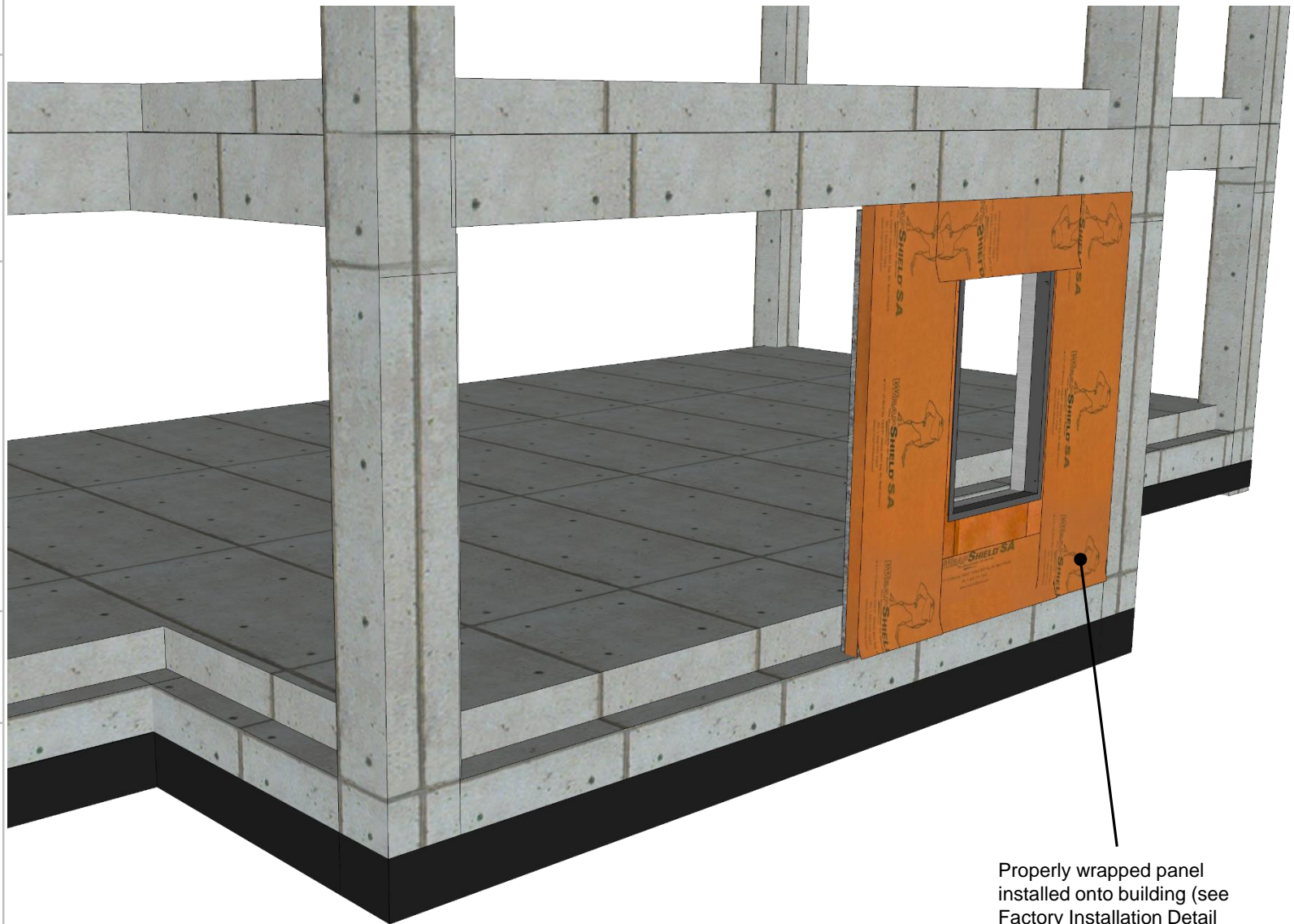
Detail sketch is generic, representing suggested best practices for VaproShield materials, and does not represent a specific job site condition and therefore may not be applicable to certain projects. Detail sketch is designed for use as a reference and must be approved by the designer/consultant of record for each project prior to installation by the subcontractor. Changes and approvals of VaproShield details are the sole responsibility of the designer/consultant of record. VaproShield is **not** the designer of record for building enclosure details and takes no responsibility for the accuracy or interpretation of actual project site conditions.

Always check [www.VaproShield.com](http://www.VaproShield.com) for the latest details and installation instructions

VaproShield LLC  
915 26th Ave. N.W. Suite C5  
Gig Harbor, WA 98335  
Toll Free: 1.866.731.7663  
[www.VaproShield.com](http://www.VaproShield.com)  
© VaproShield 3/15/2016

VaproShield Canada  
101-1001 West Broadway Suite 545  
Vancouver, B.C. V6H 4E4, Canada  
Toll Free: 1.866.871.8263  
[www.VaproShield.ca](http://www.VaproShield.ca)

DRAWN BY: CD  
DATE: 05.17.17  
REF: 185-1



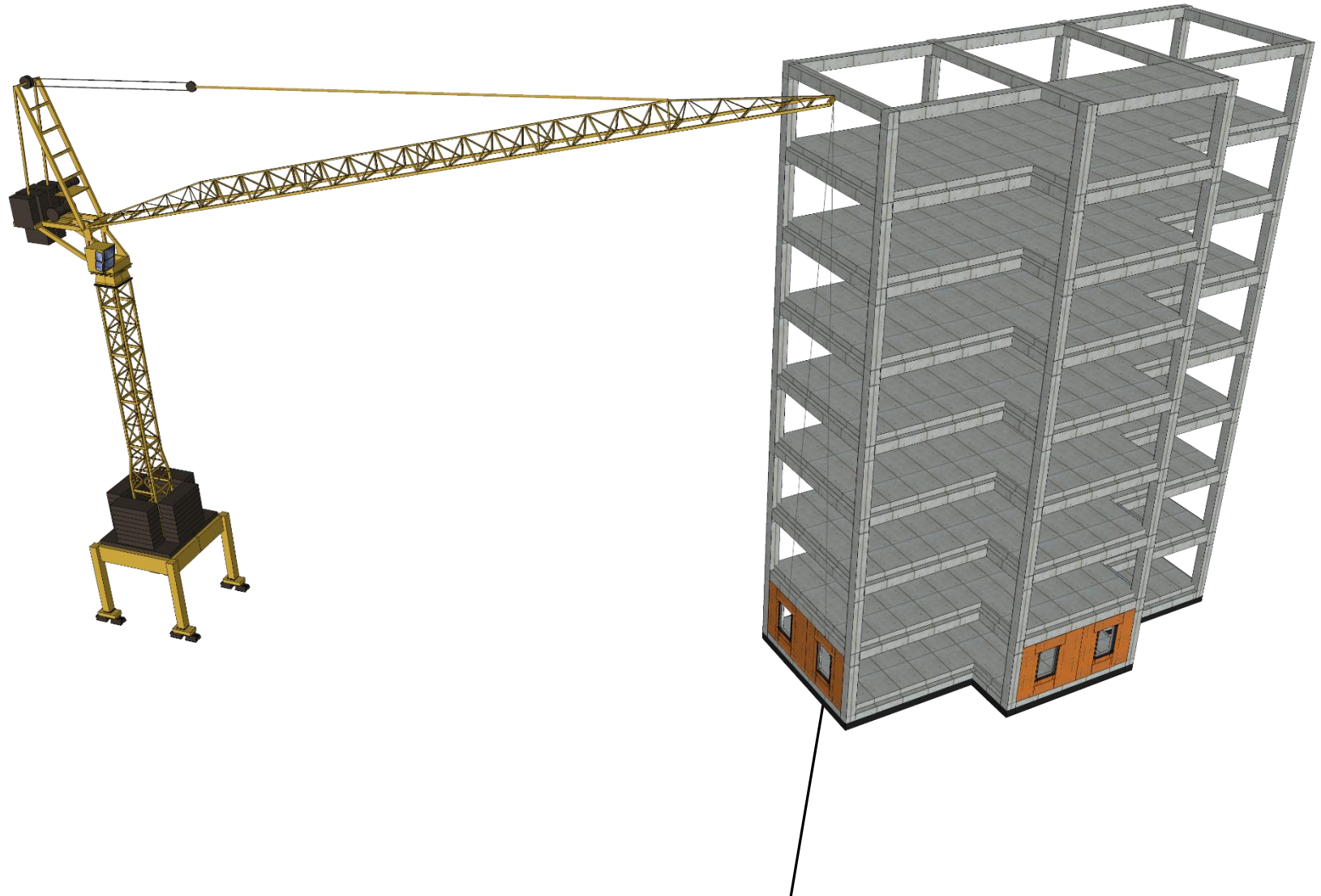
Properly wrapped panel installed onto building (see Factory Installation Detail on VaproShield.com for factory installation best practices)

# Panelized Construction: Field Assembly Overview



**WRAPSHIELD SA®**  
SELF-ADHERED

Panels are easily installed to all floors with a crane



#### DISCLAIMER

Detail sketch is generic, representing suggested best practices for VaproShield materials, and does not represent a specific job site condition and therefore may not be applicable to certain projects. Detail sketch is designed for use as a reference and must be approved by the designer/consultant of record for each project prior to installation by the subcontractor. Changes and approvals of VaproShield details are the sole responsibility of the designer/consultant of record. VaproShield is **not** the designer of record for building enclosure details and takes no responsibility for the accuracy or interpretation of actual project site conditions.

Always check [www.VaproShield.com](http://www.VaproShield.com) for the latest details and installation instructions

VaproShield LLC  
915 26th Ave. N.W. Suite C5  
Gig Harbor, WA 98335  
Toll Free: 1.866.731.7663  
[www.VaproShield.com](http://www.VaproShield.com)  
© VaproShield 3/15/2016

VaproShield Canada  
101-1001 West Broadway Suite 545  
Vancouver, B.C. V6H 4E4, Canada  
Toll Free: 1.866.871.8263  
[www.VaproShield.ca](http://www.VaproShield.ca)

DRAWN BY: CD  
DATE: 05.17.17  
REF: 185-2

Additional panel, properly wrapped, installed onto building (see Factory Installation Detail on [VaproShield.com](http://VaproShield.com) for factory installation best practices)

# Panelized Construction: Field Assembly Overview



**WRAP SHIELD SA®**  
SELF-ADHERED

VaproFlashing SA  
installs under material  
left unattached at bottom  
of panel

#### DISCLAIMER

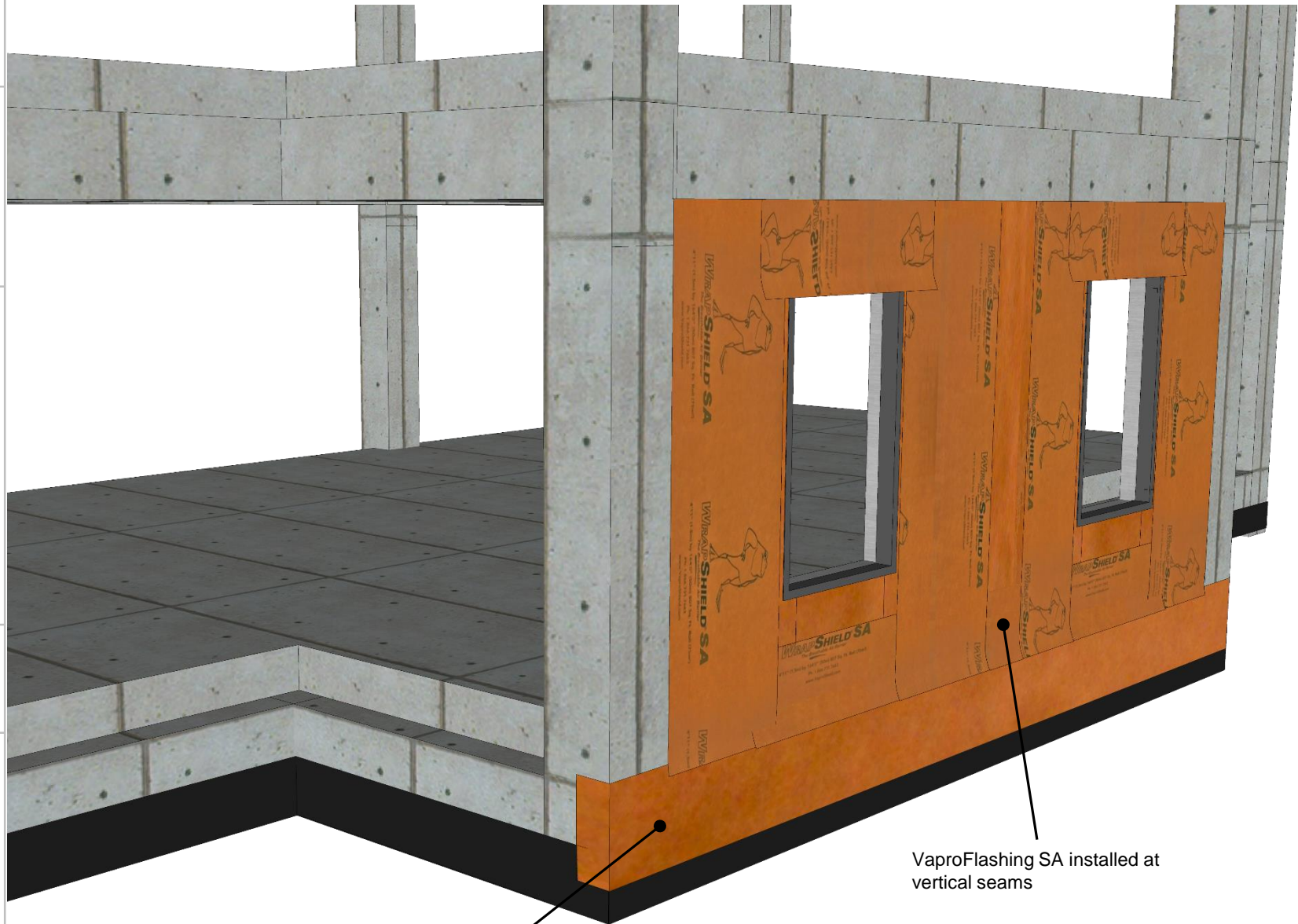
Detail sketch is generic, representing suggested best practices for VaproShield materials, and does not represent a specific job site condition and therefore may not be applicable to certain projects. Detail sketch is designed for use as a reference and must be approved by the designer/consultant of record for each project prior to installation by the subcontractor. Changes and approvals of VaproShield details are the sole responsibility of the designer/consultant of record. VaproShield is **not** the designer of record for building enclosure details and takes no responsibility for the accuracy or interpretation of actual project site conditions.

Always check [www.VaproShield.com](http://www.VaproShield.com)  
for the latest details and installation  
instructions

VaproShield LLC  
915 26th Ave. N.W. Suite C5  
Gig Harbor, WA 98335  
Toll Free: 1.866.731.7663  
[www.VaproShield.com](http://www.VaproShield.com)  
© VaproShield 3/15/2016

VaproShield Canada  
101-1001 West Broadway Suite 545  
Vancouver, B.C. V6H 4E4, Canada  
Toll Free: 1.866.871.8263  
[www.VaproShield.ca](http://www.VaproShield.ca)

DRAWN BY: CD  
DATE: 05.17.17  
REF: 185-3



VaproFlashing SA installed beneath detached field membrane, properly shingled (release film left attached on bottom 6" of field membrane, as per Factory Installation best practices)

VaproFlashing SA installed at vertical seams

# Panelized Construction: Field Assembly Overview



**WRAPSHIELD SA®**  
SELF-ADHERED

Fill in bottom floor with panels, installing VaproFlashing SA around entire base of building

#### DISCLAIMER

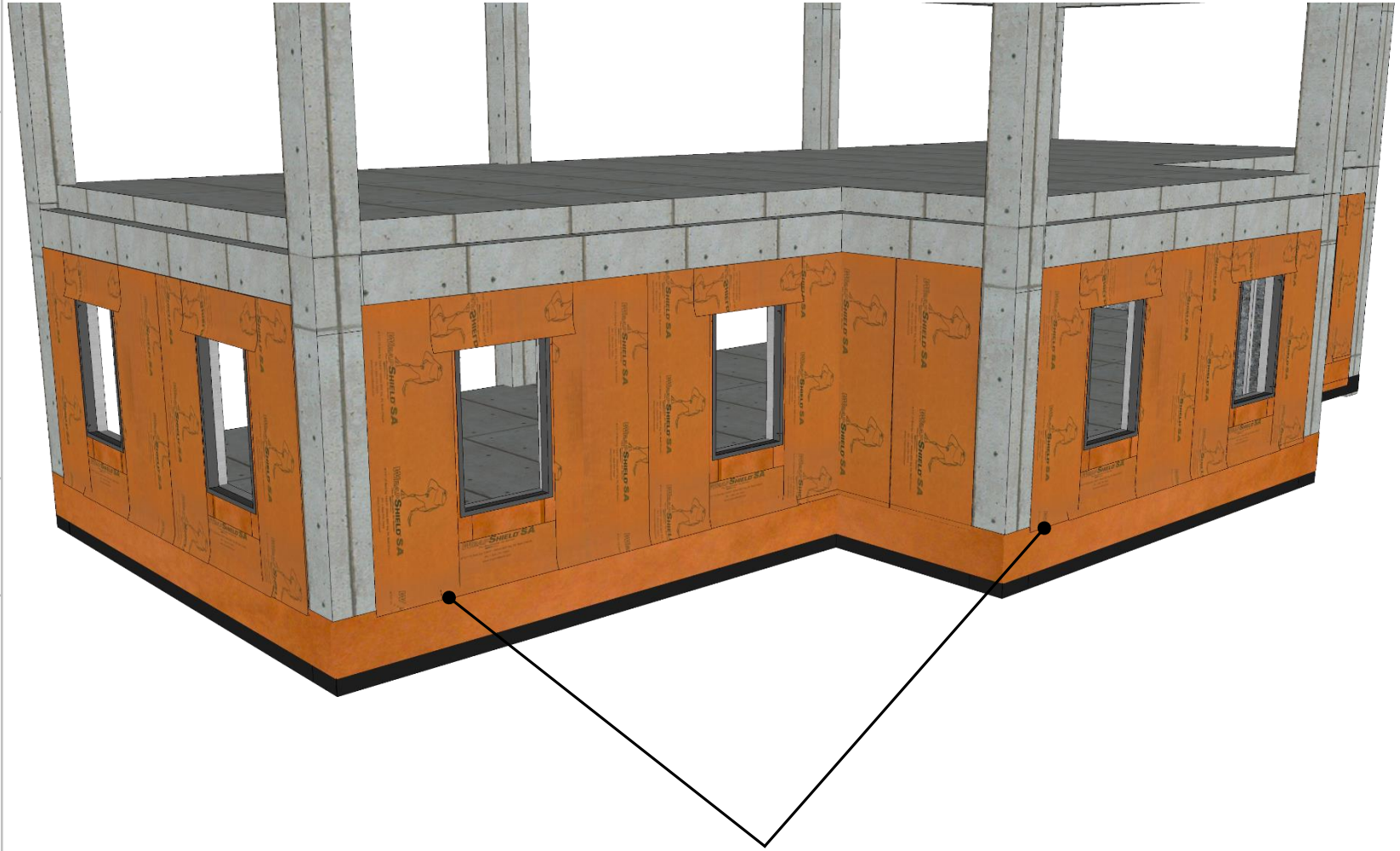
Detail sketch is generic, representing suggested best practices for VaproShield materials, and does not represent a specific job site condition and therefore may not be applicable to certain projects. Detail sketch is designed for use as a reference and must be approved by the designer/consultant of record for each project prior to installation by the subcontractor. Changes and approvals of VaproShield details are the sole responsibility of the designer/consultant of record. VaproShield is **not** the designer of record for building enclosure details and takes no responsibility for the accuracy or interpretation of actual project site conditions.

Always check [www.VaproShield.com](http://www.VaproShield.com) for the latest details and installation instructions

VaproShield LLC  
915 26th Ave. N.W. Suite C5  
Gig Harbor, WA 98335  
Toll Free: 1.866.731.7663  
[www.VaproShield.com](http://www.VaproShield.com)  
© VaproShield 3/15/2016

VaproShield Canada  
101-1001 West Broadway Suite 545  
Vancouver, B.C. V6H 4E4, Canada  
Toll Free: 1.866.871.8263  
[www.VaproShield.ca](http://www.VaproShield.ca)

DRAWN BY: CD  
DATE: 05.17.17  
REF: 185-4



Fill in 1<sup>st</sup> floor of building with panels, install VaproFlashing SA beneath bottom flap of field membrane with bottom 6" of release film attached

**WRAPSHIELD SA**<sup>®</sup>  
SELF-ADHERED

Cover inside and outside corners with VaproFlashing SA, which spans corners and seams, and can be installed by one person

**DISCLAIMER**

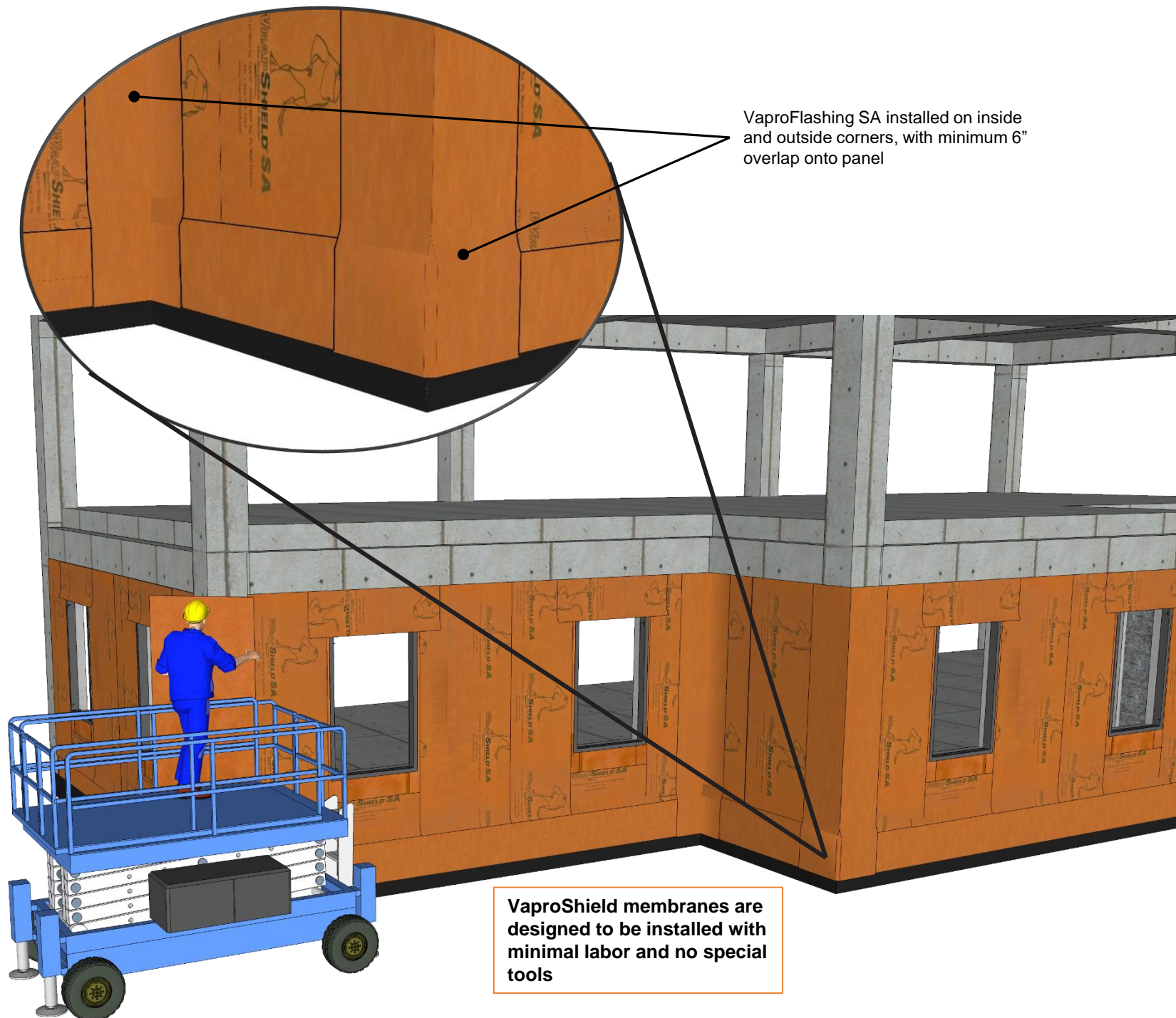
Detail sketch is generic, representing suggested best practices for VaproShield materials, and does not represent a specific job site condition and therefore may not be applicable to certain projects. Detail sketch is designed for use as a reference and must be approved by the designer/consultant of record for each project prior to installation by the subcontractor. Changes and approvals of VaproShield details are the sole responsibility of the designer/consultant of record. VaproShield is **not** the designer of record for building enclosure details and takes no responsibility for the accuracy or interpretation of actual project site conditions.

Always check [www.VaproShield.com](http://www.VaproShield.com) for the latest details and installation instructions

VaproShield LLC  
915 26th Ave. N.W. Suite C5  
Gig Harbor, WA 98335  
Toll Free: 1.866.731.7663  
[www.VaproShield.com](http://www.VaproShield.com)  
© VaproShield 3/15/2016

VaproShield Canada  
101-1001 West Broadway Suite 545  
Vancouver, B.C. V6H 4E4, Canada  
Toll Free: 1.866.871.8263  
[www.VaproShield.ca](http://www.VaproShield.ca)

# Panelized Construction: Field Assembly Overview



**WRAPSHIELD SA**<sup>®</sup>  
SELF-ADHERED

Install 2<sup>nd</sup> floor panels,  
then install VaproFlashing SA  
underneath upper  
course and shingled over  
lower course to create  
shingle effect

**DISCLAIMER**

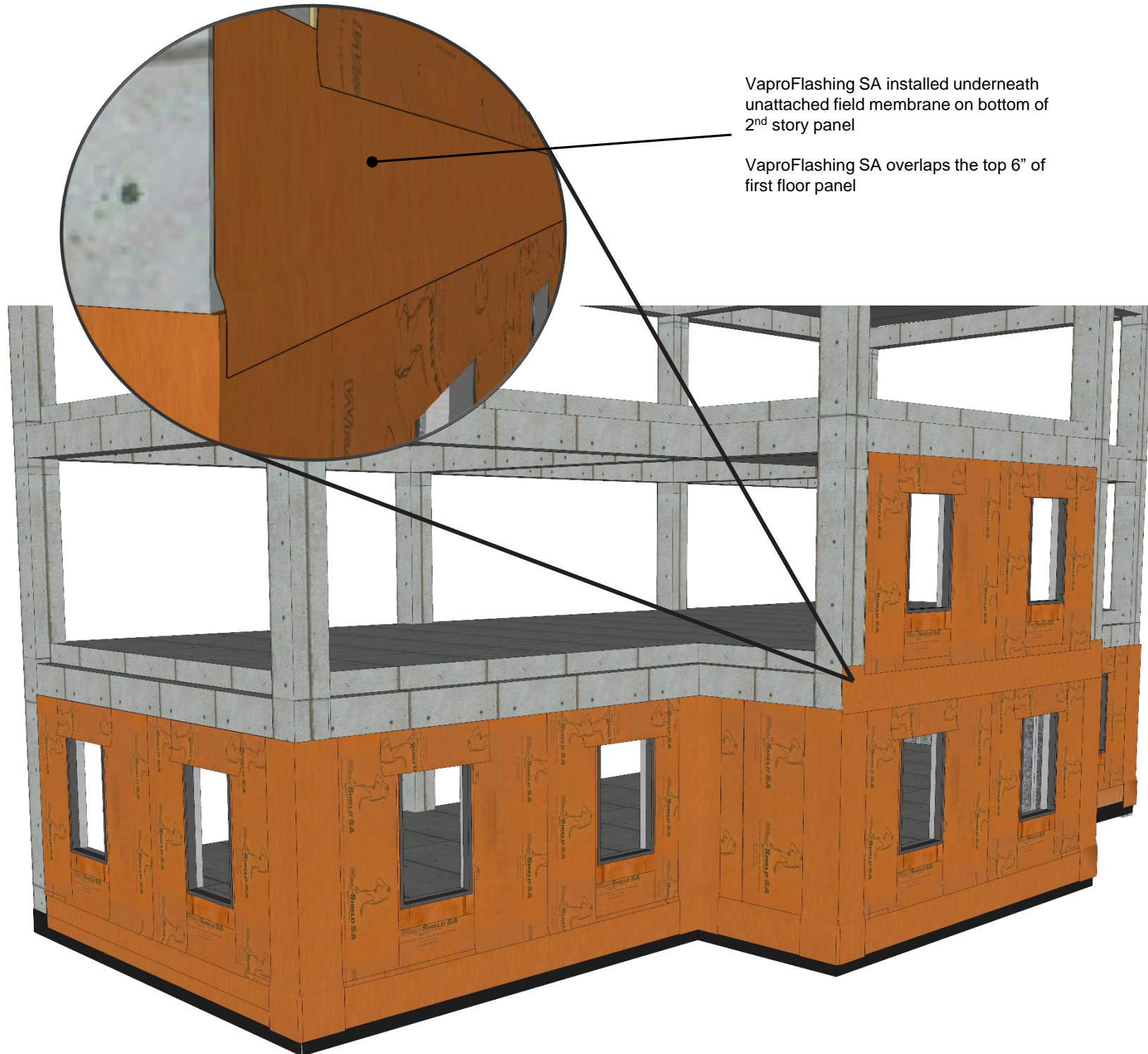
Detail sketch is generic, representing suggested best practices for VaproShield materials, and does not represent a specific job site condition and therefore may not be applicable to certain projects. Detail sketch is designed for use as a reference and must be approved by the designer/ consultant of record for each project prior to installation by the subcontractor. Changes and approvals of VaproShield details are the sole responsibility of the designer/consultant of record. VaproShield is **not** the designer of record for building enclosure details and takes no responsibility for the accuracy or interpretation of actual project site conditions.

Always check [www.VaproShield.com](http://www.VaproShield.com)  
for the latest details and installation  
instructions

VaproShield LLC  
915 26th Ave. N.W. Suite C5  
Gig Harbor, WA 98335  
Toll Free: 1.866.731.7663  
[www.VaproShield.com](http://www.VaproShield.com)  
© VaproShield 3/15/2016

VaproShield Canada  
101-1001 West Broadway Suite 545  
Vancouver, B.C. V6H 4E4, Canada  
Toll Free: 1.866.871.8263  
[www.VaproShield.ca](http://www.VaproShield.ca)

# Panelized Construction: Field Assembly Overview



Continue filling in above  
floors, using  
VaproFlashing SA to  
shingle between floors

**DISCLAIMER**

Detail sketch is generic, representing suggested best practices for VaproShield materials, and does not represent a specific job site condition and therefore may not be applicable to certain projects. Detail sketch is designed for use as a reference and must be approved by the designer/ consultant of record for each project prior to installation by the subcontractor. Changes and approvals of VaproShield details are the sole responsibility of the designer/consultant of record. VaproShield is **not** the designer of record for building enclosure details and takes no responsibility for the accuracy or interpretation of actual project site conditions.

Always check [www.VaproShield.com](http://www.VaproShield.com)  
for the latest details and installation  
instructions

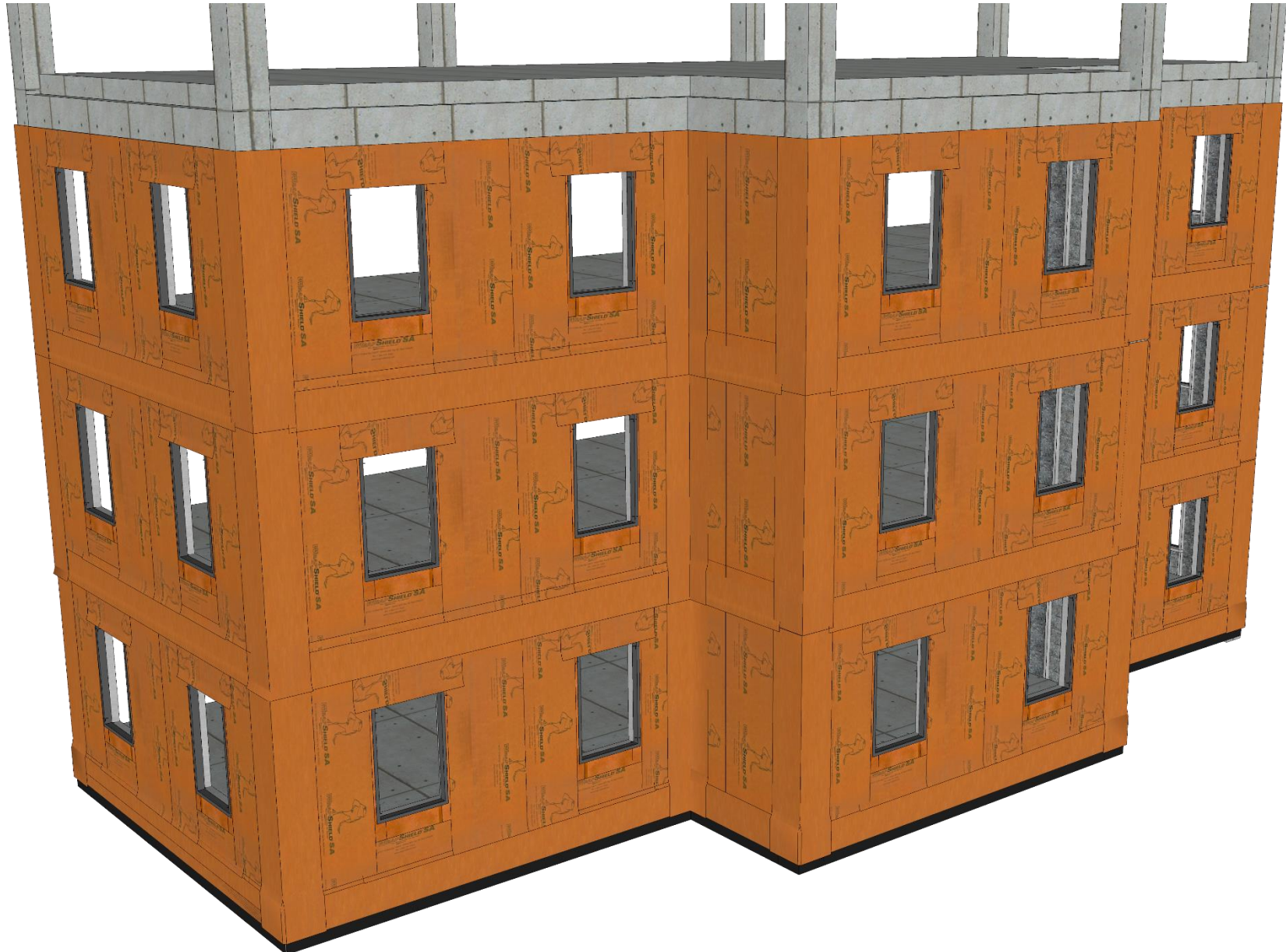
VaproShield LLC  
915 26th Ave. N.W. Suite C5  
Gig Harbor, WA 98335  
Toll Free: 1.866.731.7663  
[www.VaproShield.com](http://www.VaproShield.com)  
© VaproShield 3/15/2016

VaproShield Canada  
101-1001 West Broadway Suite 545  
Vancouver, B.C. V6H 4E4, Canada  
Toll Free: 1.866.871.8263  
[www.VaproShield.ca](http://www.VaproShield.ca)

# Panelized Construction: Field Assembly Overview

Layers overlap between floors to ensure no reverse laps and minimal need for sealant or second pass around the building

VaproFlashing SA Self-Adhered installed at all vertical seams



# Panelized Construction: Field Assembly Overview



**WRAPSHIELD SA®**  
SELF-ADHERED

Panelized construction has no height constraints and saves time and labor

#### DISCLAIMER

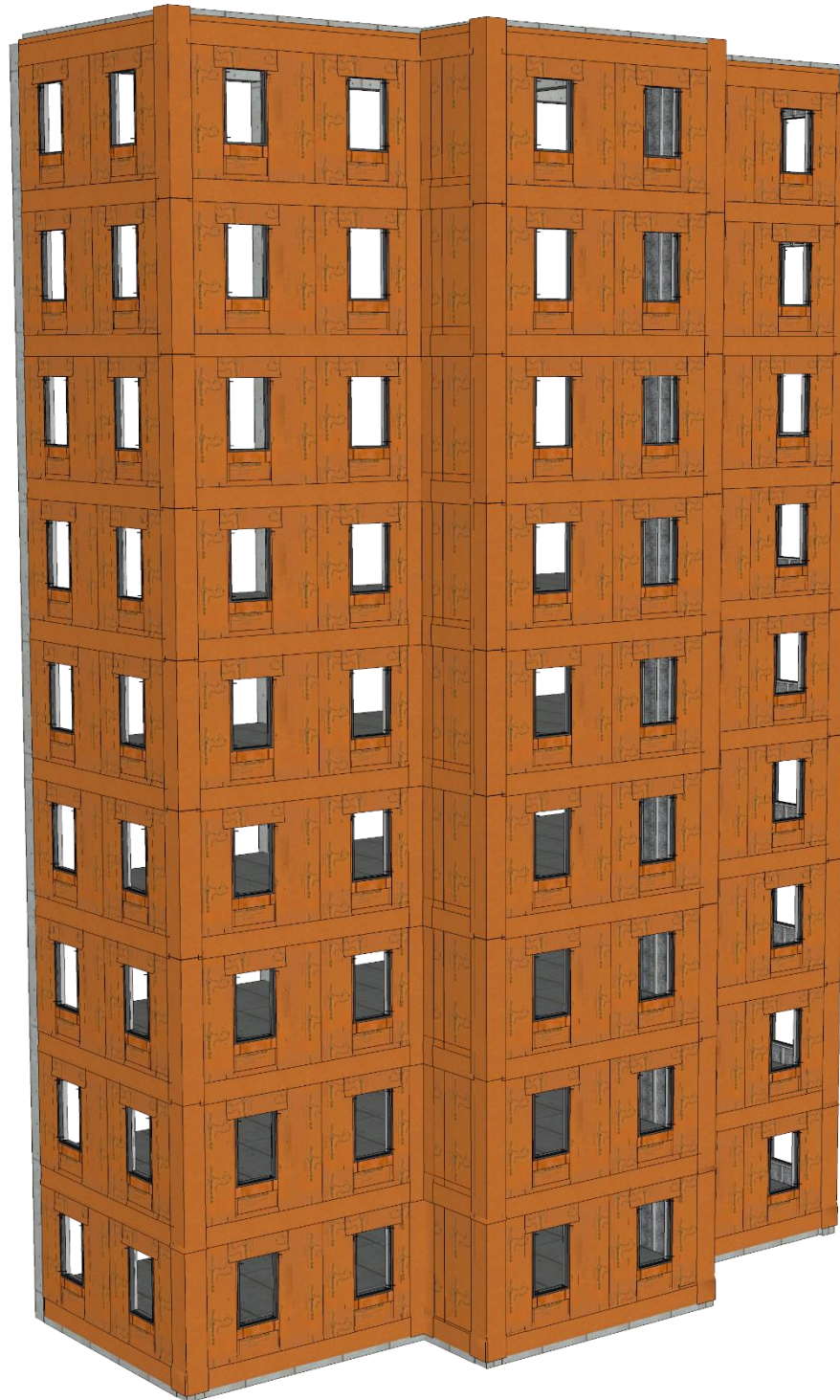
Detail sketch is generic, representing suggested best practices for VaproShield materials, and does not represent a specific job site condition and therefore may not be applicable to certain projects. Detail sketch is designed for use as a reference and must be approved by the designer/ consultant of record for each project prior to installation by the subcontractor. Changes and approvals of VaproShield details are the sole responsibility of the designer/consultant of record. VaproShield is **not** the designer of record for building enclosure details and takes no responsibility for the accuracy or interpretation of actual project site conditions.

Always check [www.VaproShield.com](http://www.VaproShield.com) for the latest details and installation instructions

VaproShield LLC  
915 26th Ave. N.W. Suite C5  
Gig Harbor, WA 98335  
Toll Free: 1.866.731.7663  
[www.VaproShield.com](http://www.VaproShield.com)  
© VaproShield 3/15/2016

VaproShield Canada  
101-1001 West Broadway Suite 545  
Vancouver, B.C. V6H 4E4, Canada  
Toll Free: 1.866.871.8263  
[www.VaproShield.ca](http://www.VaproShield.ca)

DRAWN BY: CD  
DATE: 05.17.17  
REF: 185-8



# Panelized Construction: Field Assembly Overview



**WRAP SHIELD SA**  
SELF-ADHERED

Place windows into  
rough opening

#### DISCLAIMER

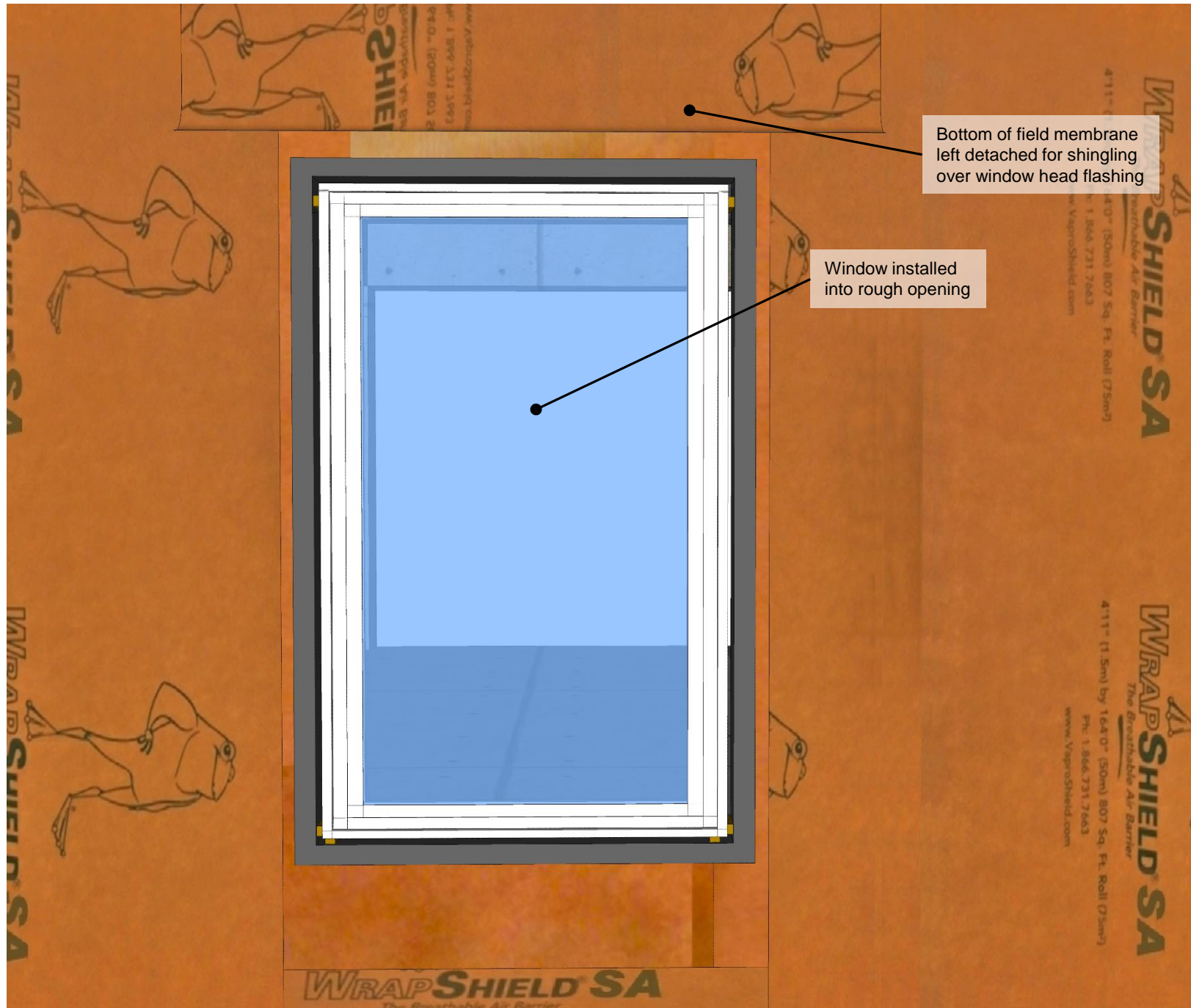
Detail sketch is generic, representing suggested best practices for VaproShield materials, and does not represent a specific job site condition and therefore may not be applicable to certain projects. Detail sketch is designed for use as a reference and must be approved by the designer/consultant of record for each project prior to installation by the subcontractor. Changes and approvals of VaproShield details are the sole responsibility of the designer/consultant of record. VaproShield is **not** the designer of record for building enclosure details and takes no responsibility for the accuracy or interpretation of actual project site conditions.

Always check [www.VaproShield.com](http://www.VaproShield.com) for the latest details and installation instructions

VaproShield LLC  
915 26th Ave. N.W. Suite C5  
Gig Harbor, WA 98335  
Toll Free: 1.866.731.7663  
[www.VaproShield.com](http://www.VaproShield.com)  
© VaproShield 3/15/2016

VaproShield Canada  
101-1001 West Broadway Suite 545  
Vancouver, B.C. V6H 4E4, Canada  
Toll Free: 1.866.871.8263  
[www.VaproShield.ca](http://www.VaproShield.ca)

DRAWN BY: CD  
DATE: 05.17.17  
REF: 185-9

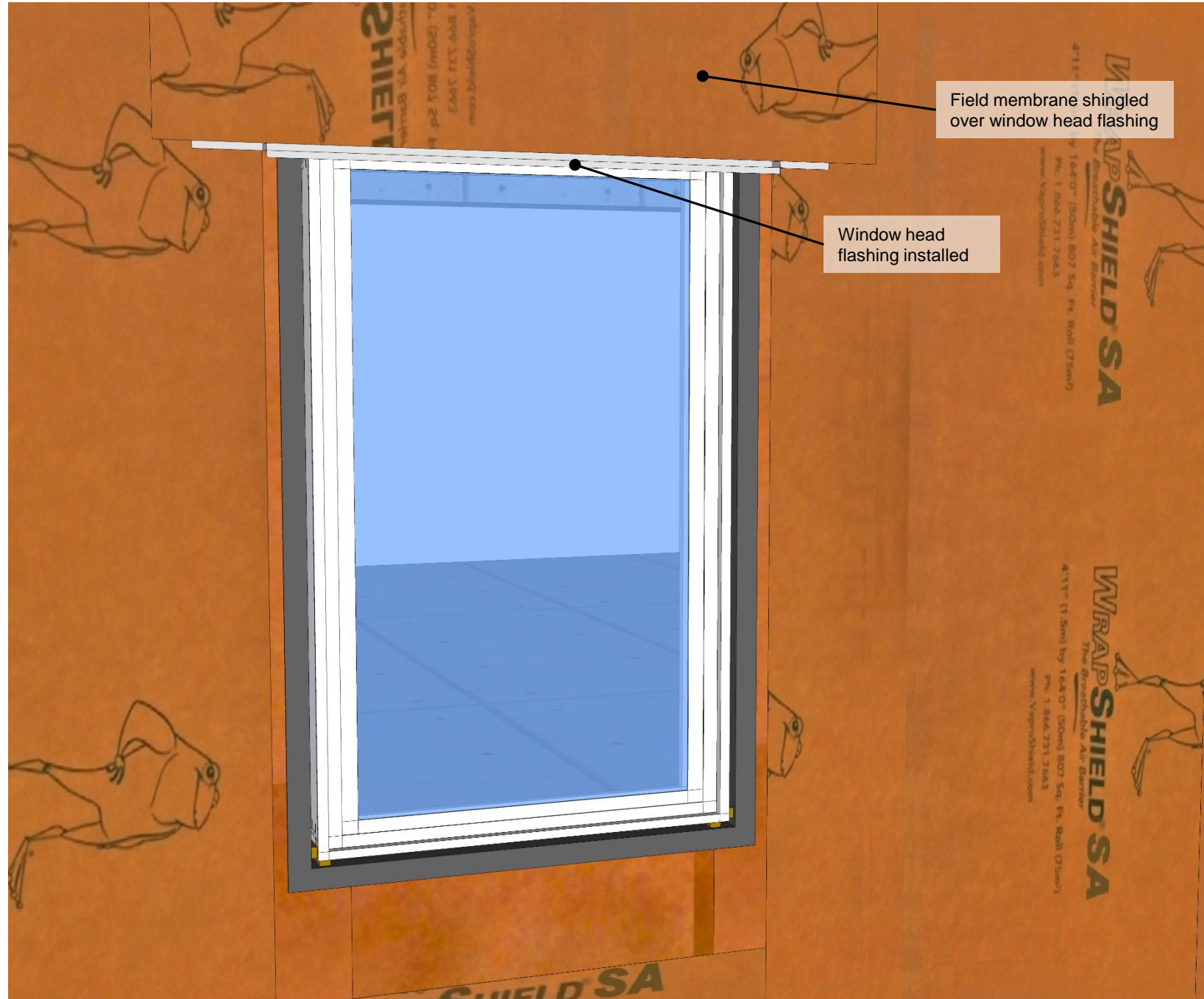


# Panelized Construction: Field Assembly Overview



**WRAPSHIELD SA®**  
SELF-ADHERED

Install head flashing and shingle over with detached field membrane



#### DISCLAIMER

Detail sketch is generic, representing suggested best practices for VaproShield materials, and does not represent a specific job site condition and therefore may not be applicable to certain projects. Detail sketch is designed for use as a reference and must be approved by the designer/consultant of record for each project prior to installation by the subcontractor. Changes and approvals of VaproShield details are the sole responsibility of the designer/consultant of record. VaproShield is **not** the designer of record for building enclosure details and takes no responsibility for the accuracy or interpretation of actual project site conditions.

Always check [www.VaproShield.com](http://www.VaproShield.com) for the latest details and installation instructions

VaproShield LLC  
915 26th Ave. N.W. Suite C5  
Gig Harbor, WA 98335  
Toll Free: 1.866.731.7663  
[www.VaproShield.com](http://www.VaproShield.com)  
© VaproShield 3/15/2016

VaproShield Canada  
101-1001 West Broadway Suite 545  
Vancouver, B.C. V6H 4E4, Canada  
Toll Free: 1.866.871.8263  
[www.VaproShield.ca](http://www.VaproShield.ca)

DRAWN BY: CD  
DATE: 05.17.17  
REF: 185-10

# Panelized Construction: Field Assembly Overview



**WRAPSHIELD SA®**  
SELF-ADHERED

Fill in gap around window with VaproBond sealant

#### DISCLAIMER

Detail sketch is generic, representing suggested best practices for VaproShield materials, and does not represent a specific job site condition and therefore may not be applicable to certain projects. Detail sketch is designed for use as a reference and must be approved by the designer/consultant of record for each project prior to installation by the subcontractor. Changes and approvals of VaproShield details are the sole responsibility of the designer/consultant of record. VaproShield is **not** the designer of record for building enclosure details and takes no responsibility for the accuracy or interpretation of actual project site conditions.

Always check [www.VaproShield.com](http://www.VaproShield.com) for the latest details and installation instructions

VaproShield LLC  
915 26th Ave. N.W. Suite C5  
Gig Harbor, WA 98335  
Toll Free: 1.866.731.7663  
[www.VaproShield.com](http://www.VaproShield.com)  
© VaproShield 3/15/2016

VaproShield Canada  
101-1001 West Broadway Suite 545  
Vancouver, B.C. V6H 4E4, Canada  
Toll Free: 1.866.871.8263  
[www.VaproShield.ca](http://www.VaproShield.ca)

DRAWN BY: CD  
DATE: 05.17.17  
REF: 185-11

