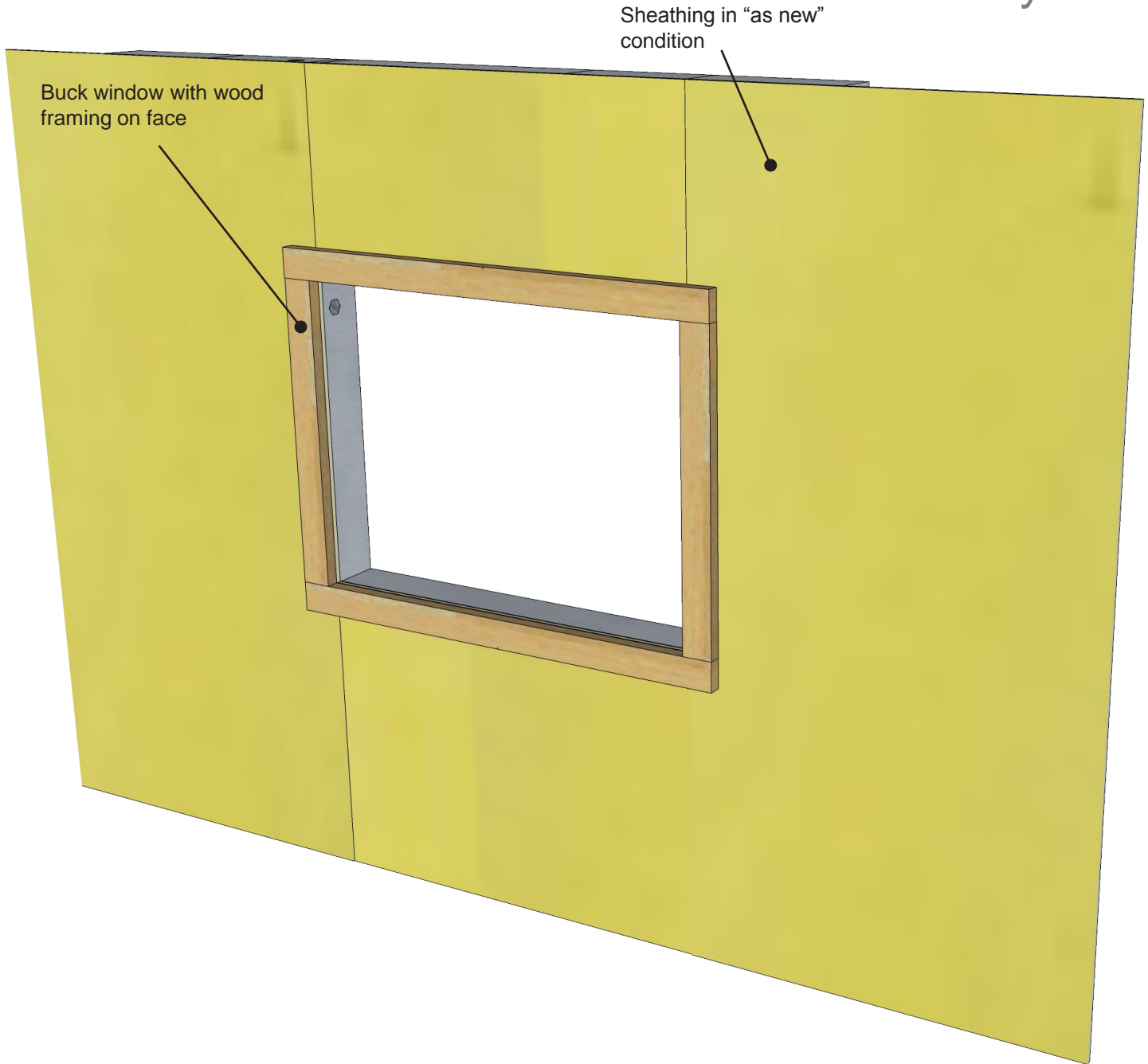


Step 1: Buck Framed Window RO Flashing System



VAPROLIQUI-FLASH™

Step 1: Inspect rough opening, clear of debris

PRODUCT DESCRIPTION

VaproLiqui-Flash is a liquid applied, vapor permeable, waterproof, air barrier flashing system component for window and door rough openings. VaproLiquiFlash is designed to work with WrapFlashing and VaproShield field membranes as a complete system.

DISCLAIMER

Detail sketch is generic, representing suggested best practices for VaproShield materials, and does not represent a specific job site condition and therefore may not be applicable to certain projects. Detail sketch is designed for use as a reference and must be approved by the designer/ consultant of record for each project prior to installation by the subcontractor. Changes and approvals of VaproShield details are the sole responsibility of the designer/consultant of record. VaproShield is **not** the designer of record for building enclosure details and takes no responsibility for the accuracy or interpretation of actual project site conditions.

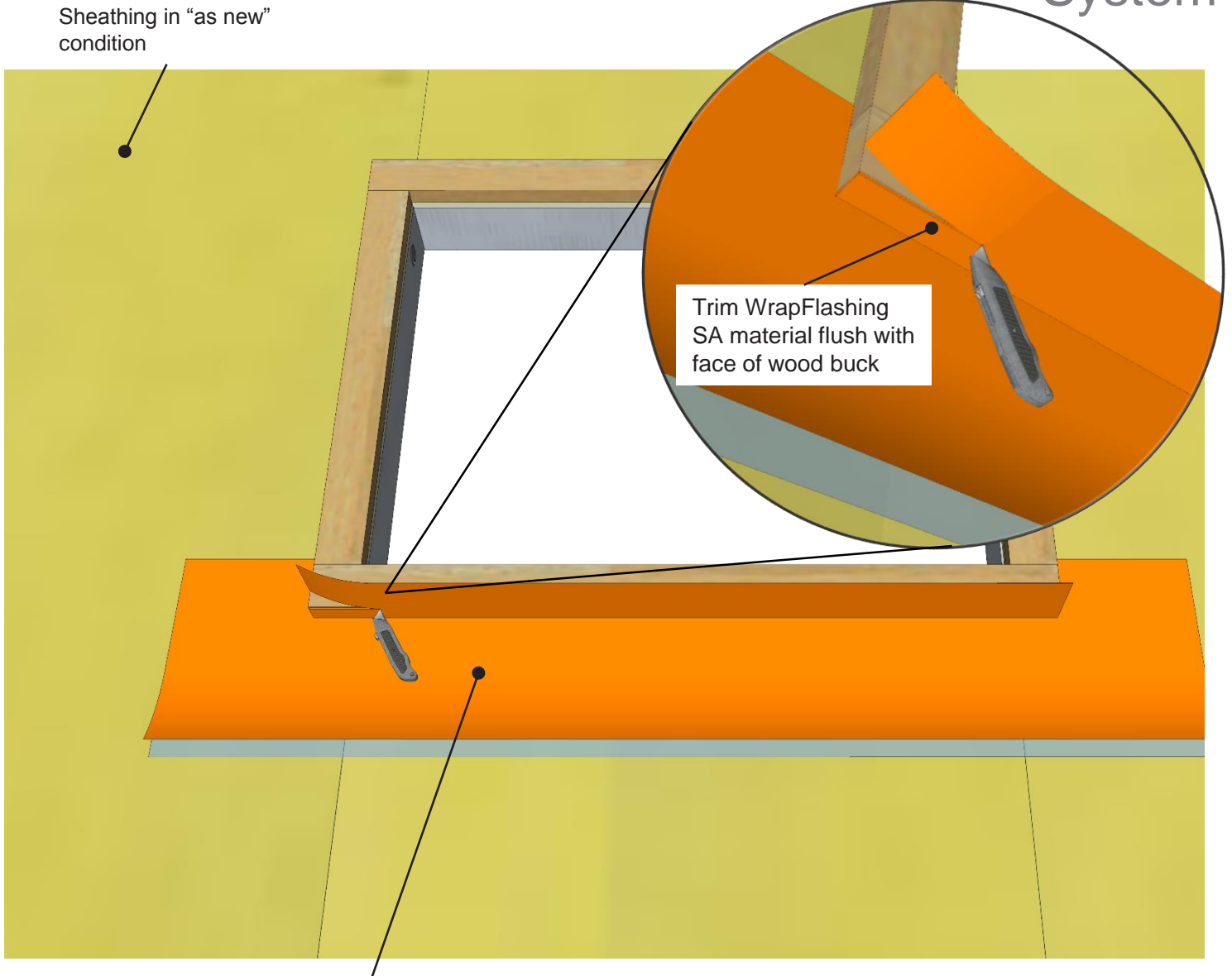
DRAWN BY: AG

DATE: 08/24/17

REF: 200-1

Always check www.VaproShield.com for the latest details and installation instructions

Step 2: Buck Framed Window RO Flashing System



WrapFlashing SA Self-Adhered properly shingled; applied directly to sheathing + folded onto bottom of buck frame.

Note: Total of 11.75" of flashing should be used:

- 9" of flashing should be left on the face of the sheathing
- 6" of release film from the bottom of the flashing to be left attached for shingling over membrane.

VAPROLIQUI-FLASH[™]

Step 2: Install WrapFlashing SA onto sill, extending onto bottom of buck frame. 9" left on face, with bottom 6" of release film to remain attached.

PRODUCT DESCRIPTION

VaproLiqui-Flash is a liquid applied, vapor permeable, waterproof, air barrier flashing system component for window and door rough openings. VaproLiquiFlash is designed to work with WrapFlashing and VaproShield field membranes as a complete system.

DISCLAIMER

Detail sketch is generic, representing suggested best practices for VaproShield materials, and does not represent a specific job site condition and therefore may not be applicable to certain projects. Detail sketch is designed for use as a reference and must be approved by the designer/ consultant of record for each project prior to installation by the subcontractor. Changes and approvals of VaproShield details are the sole responsibility of the designer/consultant of record. VaproShield is **not** the designer of record for building enclosure details and takes no responsibility for the accuracy or interpretation of actual project site conditions.

DRAWN BY: AG

DATE: 08/24/17

REF: 200-2

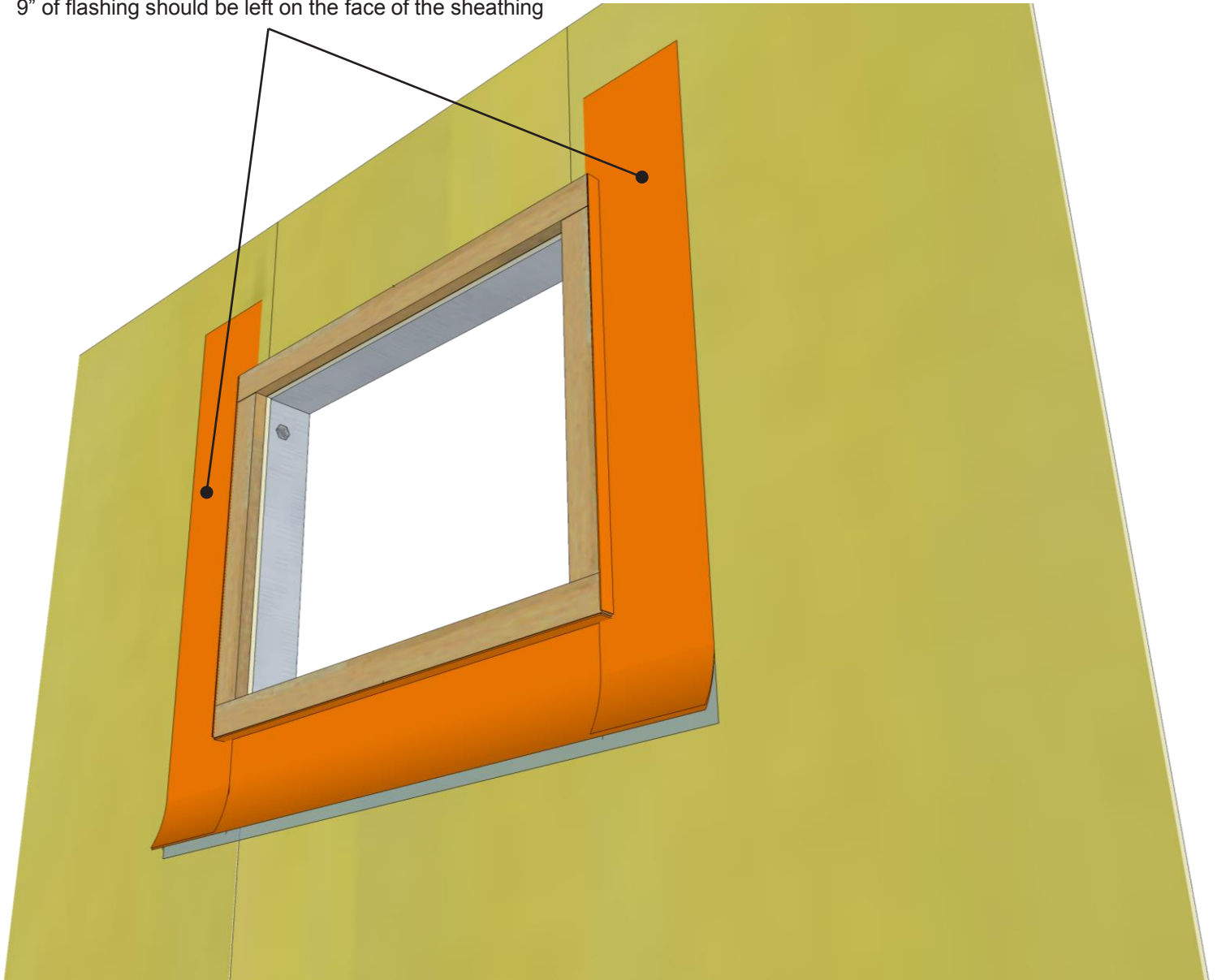
Always check www.VaproShield.com for the latest details and installation instructions

Step 3: Buck Framed Window RO Flashing System

WrapFlashing SA Self-Adhered properly shingled; applied directly to sheathing + folded onto side of buck frame.

Note: Total of 11.75" of flashing should be used:

- 9" of flashing should be left on the face of the sheathing



VAPROLIQUI-FLASH™

Step 3: Install jamb pieces extending onto side of buck frame. 9" to be left on face.

PRODUCT DESCRIPTION

VaproLiqui-Flash is a liquid applied, vapor permeable, waterproof, air barrier flashing system component for window and door rough openings. VaproLiquiFlash is designed to work with WrapFlashing and VaproShield field membranes as a complete system.

DISCLAIMER

Detail sketch is generic, representing suggested best practices for VaproShield materials, and does not represent a specific job site condition and therefore may not be applicable to certain projects. Detail sketch is designed for use as a reference and must be approved by the designer/ consultant of record for each project prior to installation by the subcontractor. Changes and approvals of VaproShield details are the sole responsibility of the designer/consultant of record. VaproShield is **not** the designer of record for building enclosure details and takes no responsibility for the accuracy or interpretation of actual project site conditions.

DRAWN BY: AG

DATE: 08/24/17

REF: 200-3

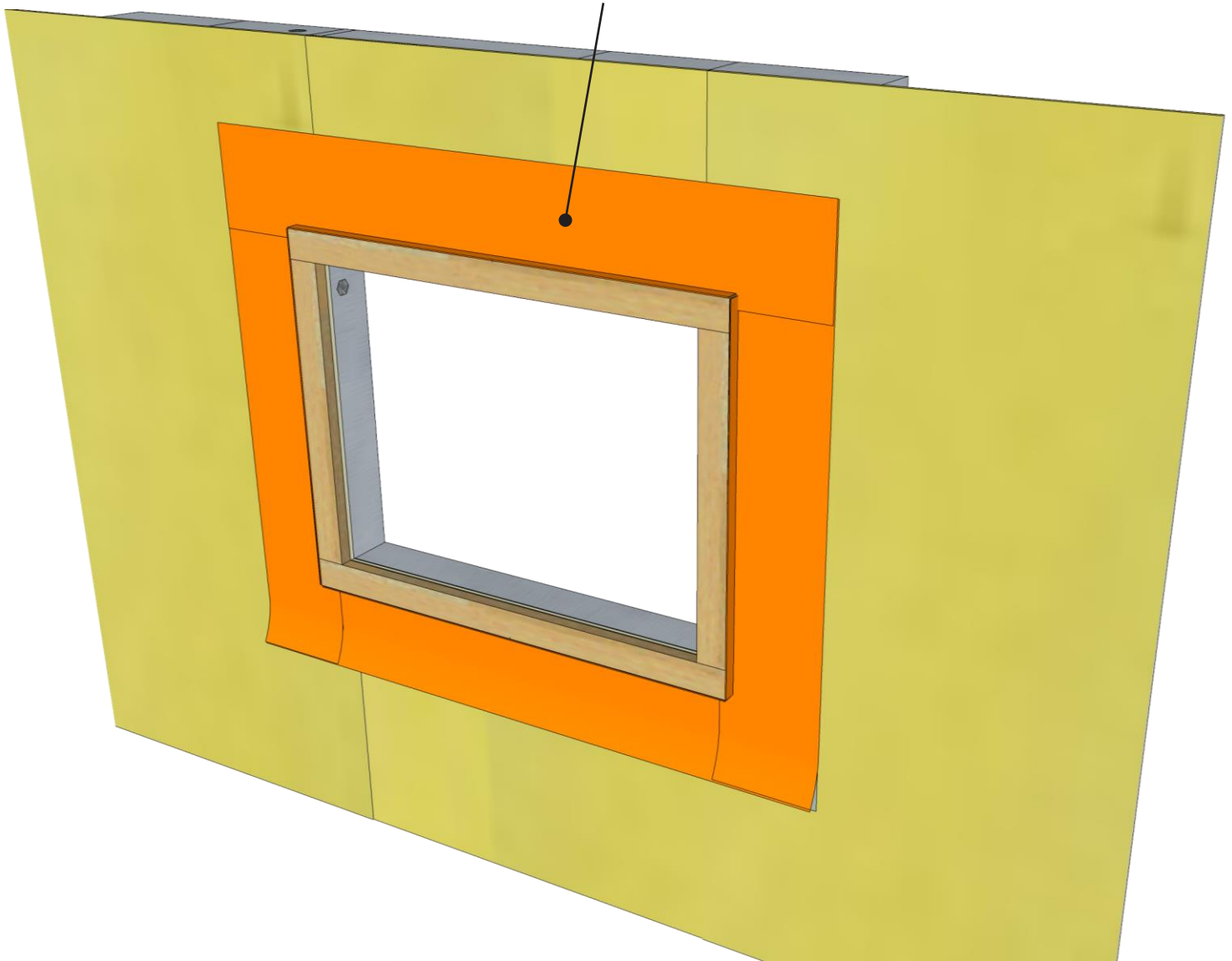
Always check www.VaproShield.com for the latest details and installation instructions

Step 4: Buck Framed Window RO Flashing System

WrapFlashing SA Self-Adhered properly shingled; applied directly to sheathing + folded onto top of buck frame.

Note: Total of 11.75" of flashing should be used:

- 9" of flashing should be left on the face of the sheathing



VAPROLIQUI-FLASH[™]

Step 4: Install head piece extending onto top of buck frame. 9" to be left on face.

PRODUCT DESCRIPTION

VaproLiqui-Flash is a liquid applied, vapor permeable, waterproof, air barrier flashing system component for window and door rough openings. VaproLiquiFlash is designed to work with WrapFlashing and VaproShield field membranes as a complete system.

DISCLAIMER

Detail sketch is generic, representing suggested best practices for VaproShield materials, and does not represent a specific job site condition and therefore may not be applicable to certain projects. Detail sketch is designed for use as a reference and must be approved by the designer/ consultant of record for each project prior to installation by the subcontractor. Changes and approvals of VaproShield details are the sole responsibility of the designer/consultant of record. VaproShield is **not** the designer of record for building enclosure details and takes no responsibility for the accuracy or interpretation of actual project site conditions.

DRAWN BY: AG

DATE: 08/24/17

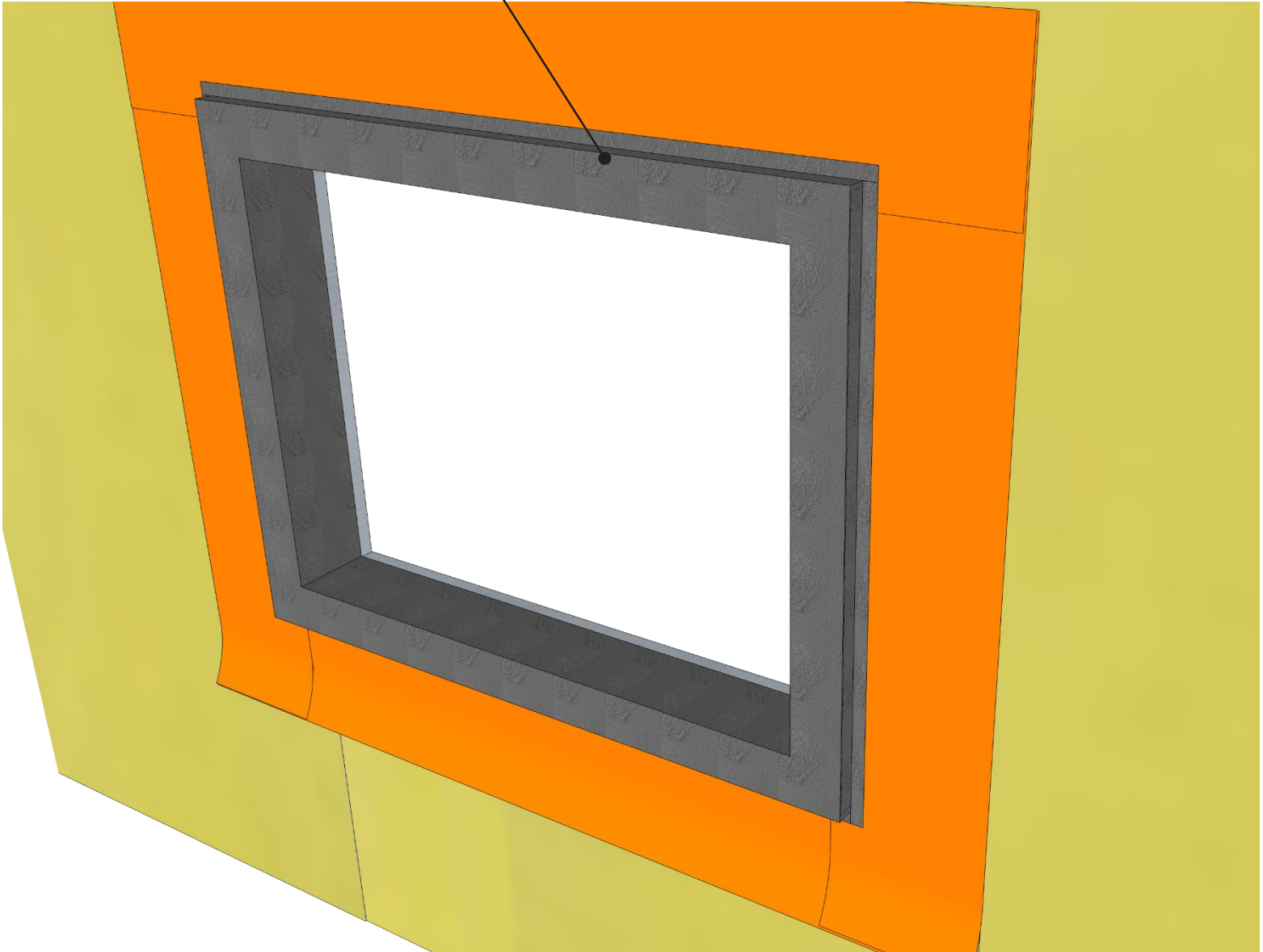
REF: 200-4

Always check www.VaproShield.com for the latest details and installation instructions

Step 5: Buck Framed Window RO Flashing System

VaproLiqui-Flash full-coverage inside rough opening + completely covering window buck frame.

VaproLiqui-Flash extends 1" onto face of wall



VAPROLIQUI-FLASH™

Step 5: Apply VaproLiqui-Flash to inside of R.O. (full coverage), completely cover buck frame, and 1" on face

DRAWN BY: AG

DATE: 08/24/17

PRODUCT DESCRIPTION

VaproLiqui-Flash is a liquid applied, vapor permeable, waterproof, air barrier flashing system component for window and door rough openings. VaproLiquiFlash is designed to work with WrapFlashing and VaproShield field membranes as a complete system.

DISCLAIMER

Detail sketch is generic, representing suggested best practices for VaproShield materials, and does not represent a specific job site condition and therefore may not be applicable to certain projects. Detail sketch is designed for use as a reference and must be approved by the designer/ consultant of record for each project prior to installation by the subcontractor. Changes and approvals of VaproShield details are the sole responsibility of the designer/consultant of record. VaproShield is **not** the designer of record for building enclosure details and takes no responsibility for the accuracy or interpretation of actual project site conditions.