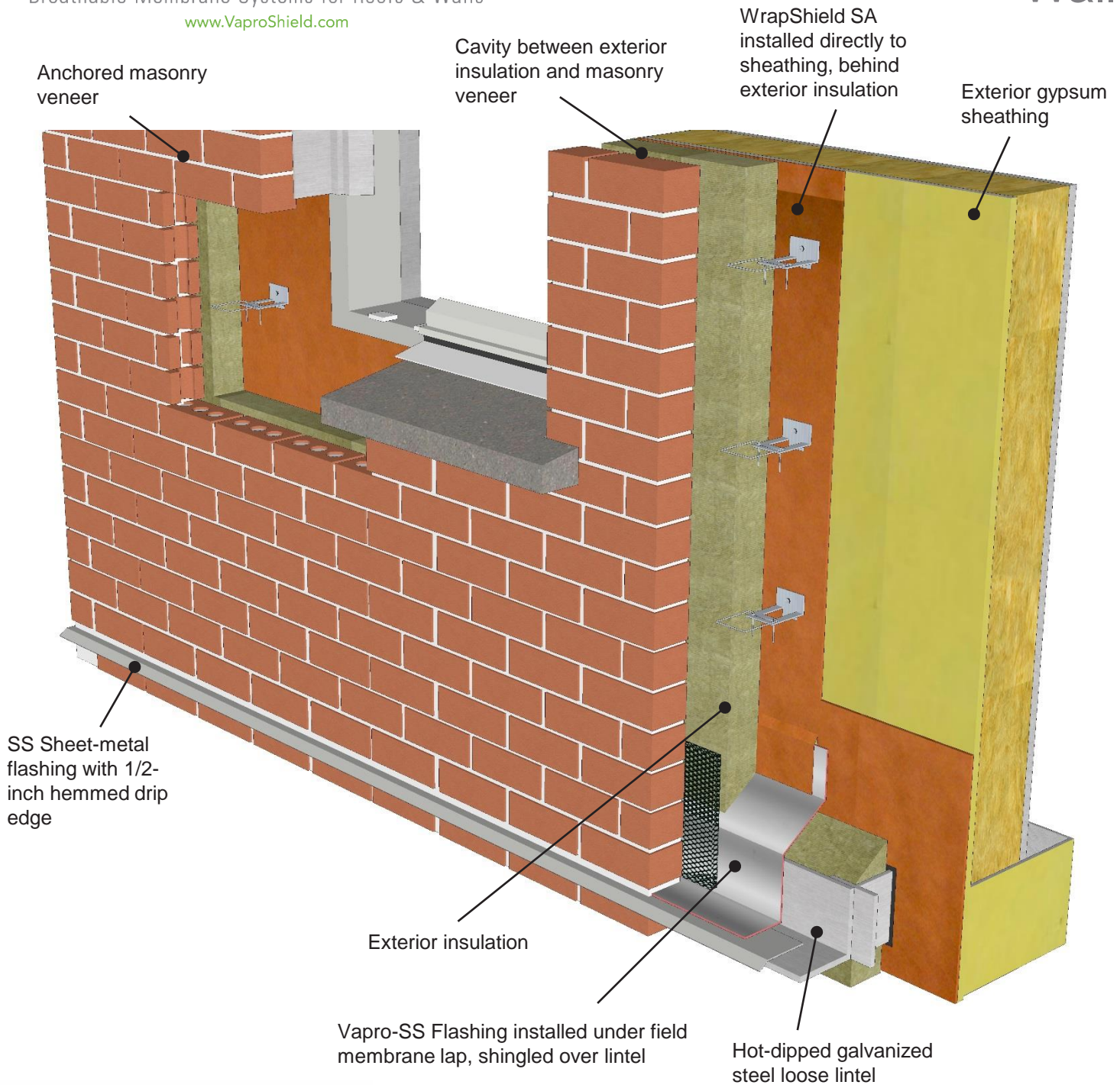


Steel Framed Base of Wall



WRAP SHIELD SA[®]
SELF-ADHERED

VAPRO-SS FLASHING[™]

PRODUCT DESCRIPTION

WrapShield SA is a self-adhered, water resistive vapor permeable air barrier sheet membrane

Vapro-SS Flashing is a self-adhering metal flashing that offers best in class puncture and tear resistance.

DISCLAIMER

Detail sketch is generic, representing suggested best practices for VaproShield materials, and does not represent a specific job site condition and therefore may not be applicable to certain projects. Detail sketch is designed for use as a reference and must be approved by the designer/consultant of record for each project prior to installation by the subcontractor. Changes and approvals of VaproShield details are the sole responsibility of the designer/consultant of record. VaproShield is **not** the designer of record for building enclosure details and takes no responsibility for the accuracy or interpretation of actual project site conditions.

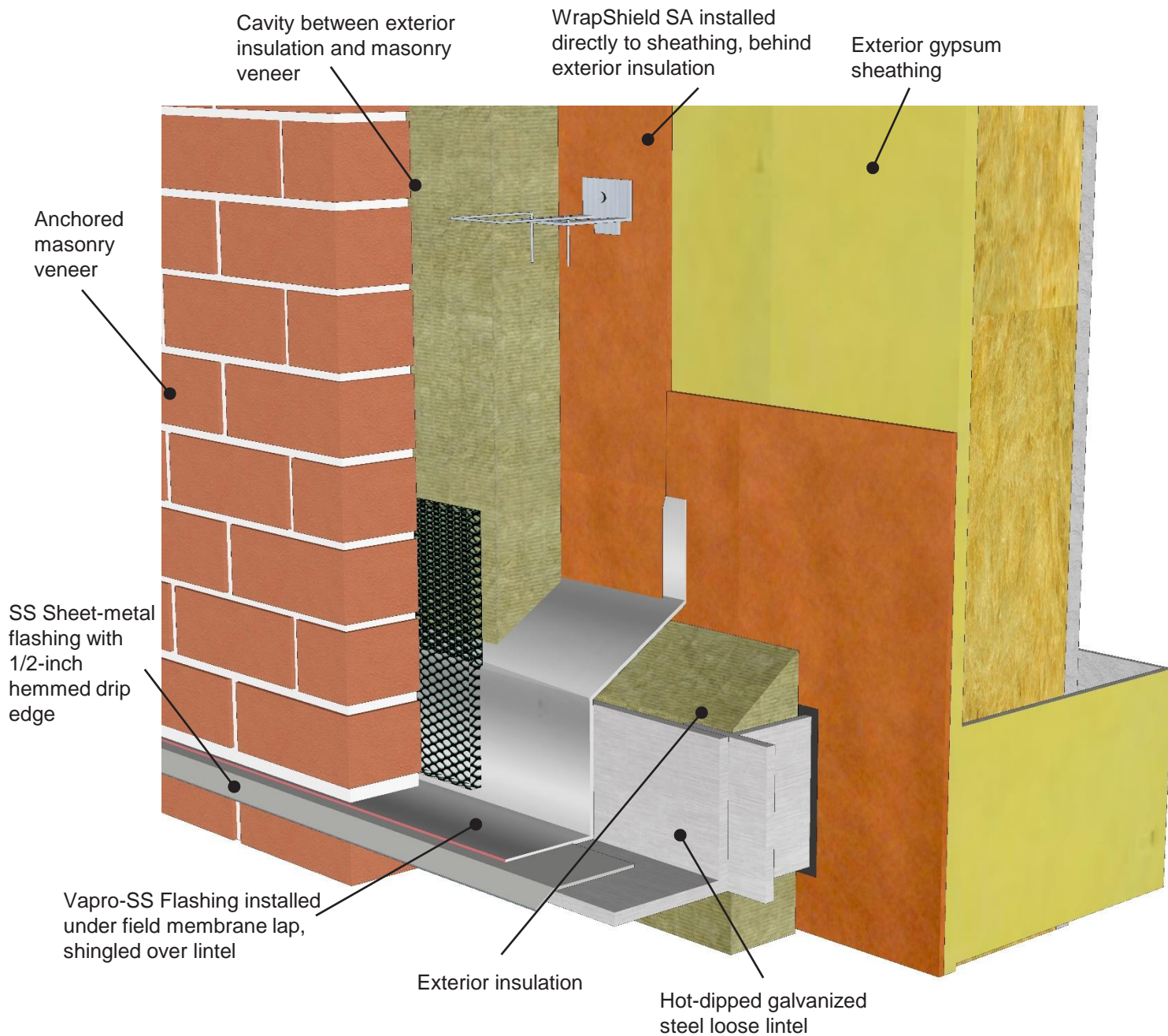
DRAWN BY: AR

DATE: 05.18.16

REF: 157

Always check www.VaproShield.com for the latest details and installation instructions

Steel Framed Base of Wall: Close Up



WRAP SHIELD SA[®]
SELF-ADHERED

VAPRO-SS FLASHING[™]

PRODUCT DESCRIPTION

WrapShield SA is a self-adhered, water resistive vapor permeable air barrier sheet membrane

Vapro-SS Flashing is a self-adhering metal flashing that offers best in class puncture and tear resistance.

DISCLAIMER

Detail sketch is generic, representing suggested best practices for VaproShield materials, and does not represent a specific job site condition and therefore may not be applicable to certain projects. Detail sketch is designed for use as a reference and must be approved by the designer/ consultant of record for each project prior to installation by the subcontractor. Changes and approvals of VaproShield details are the sole responsibility of the designer/consultant of record. VaproShield is **not** the designer of record for building enclosure details and takes no responsibility for the accuracy or interpretation of actual project site conditions.

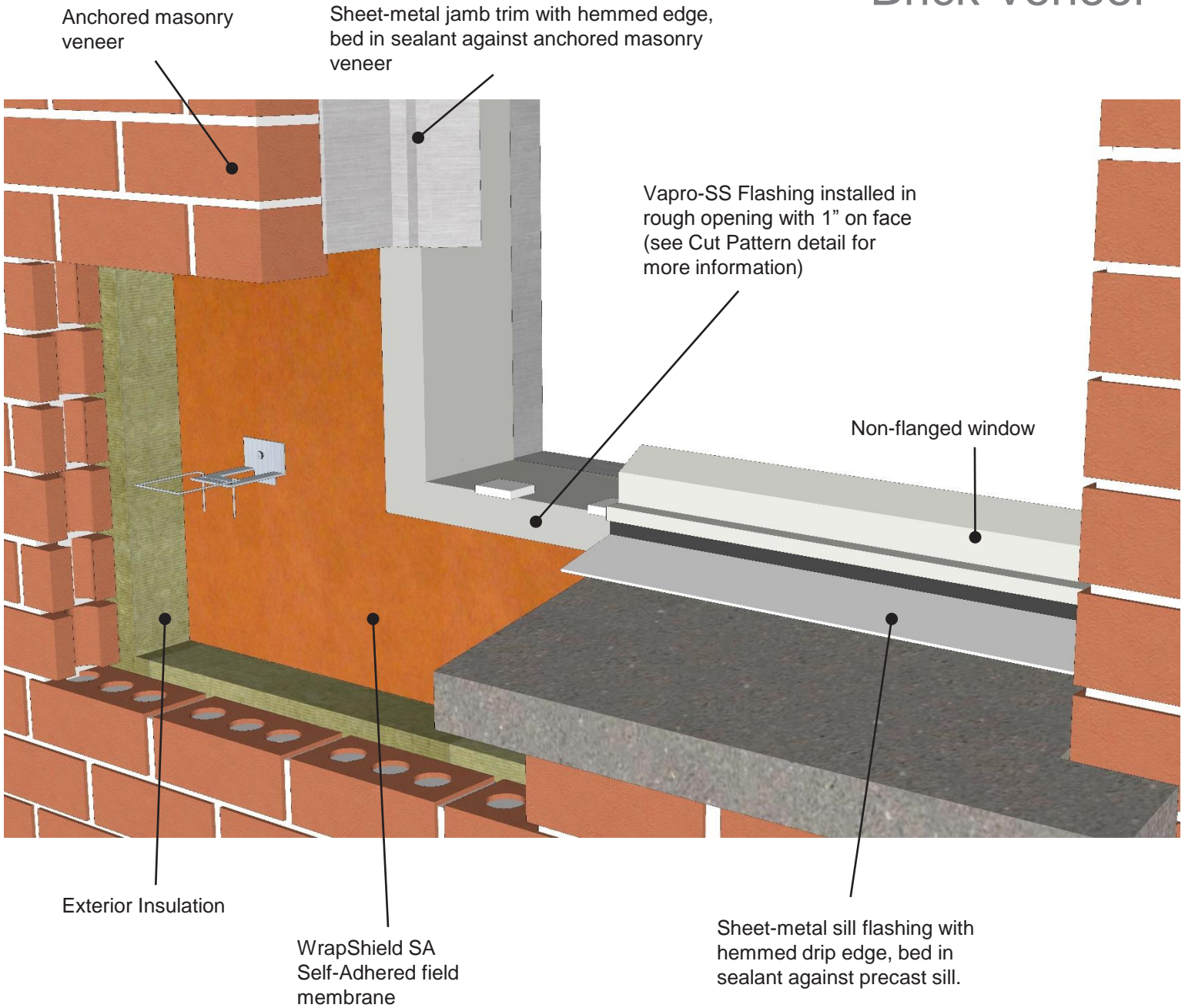
DRAWN BY: AR

DATE: 05.18.16

REF: 157

Always check www.VaproShield.com for the latest details and installation instructions

Steel Framed Window Rough Opening with Brick Veneer



WRAPSHIELD SA®
SELF-ADHERED

VAPRO-SS FLASHING™

PRODUCT DESCRIPTION

WrapShield SA is a self-adhered, water resistive vapor permeable air barrier sheet membrane

Vapro-SS Flashing is a self-adhering metal flashing that offers best in class puncture and tear resistance.

DISCLAIMER

Detail sketch is generic, representing suggested best practices for VaproShield materials, and does not represent a specific job site condition and therefore may not be applicable to certain projects. Detail sketch is designed for use as a reference and must be approved by the designer/consultant of record for each project prior to installation by the subcontractor. Changes and approvals of VaproShield details are the sole responsibility of the designer/consultant of record. VaproShield is **not** the designer of record for building enclosure details and takes no responsibility for the accuracy or interpretation of actual project site conditions.

DRAWN BY: AR

DATE: 05.18.16

REF: 158

Always check www.VaproShield.com for the latest details and installation instructions