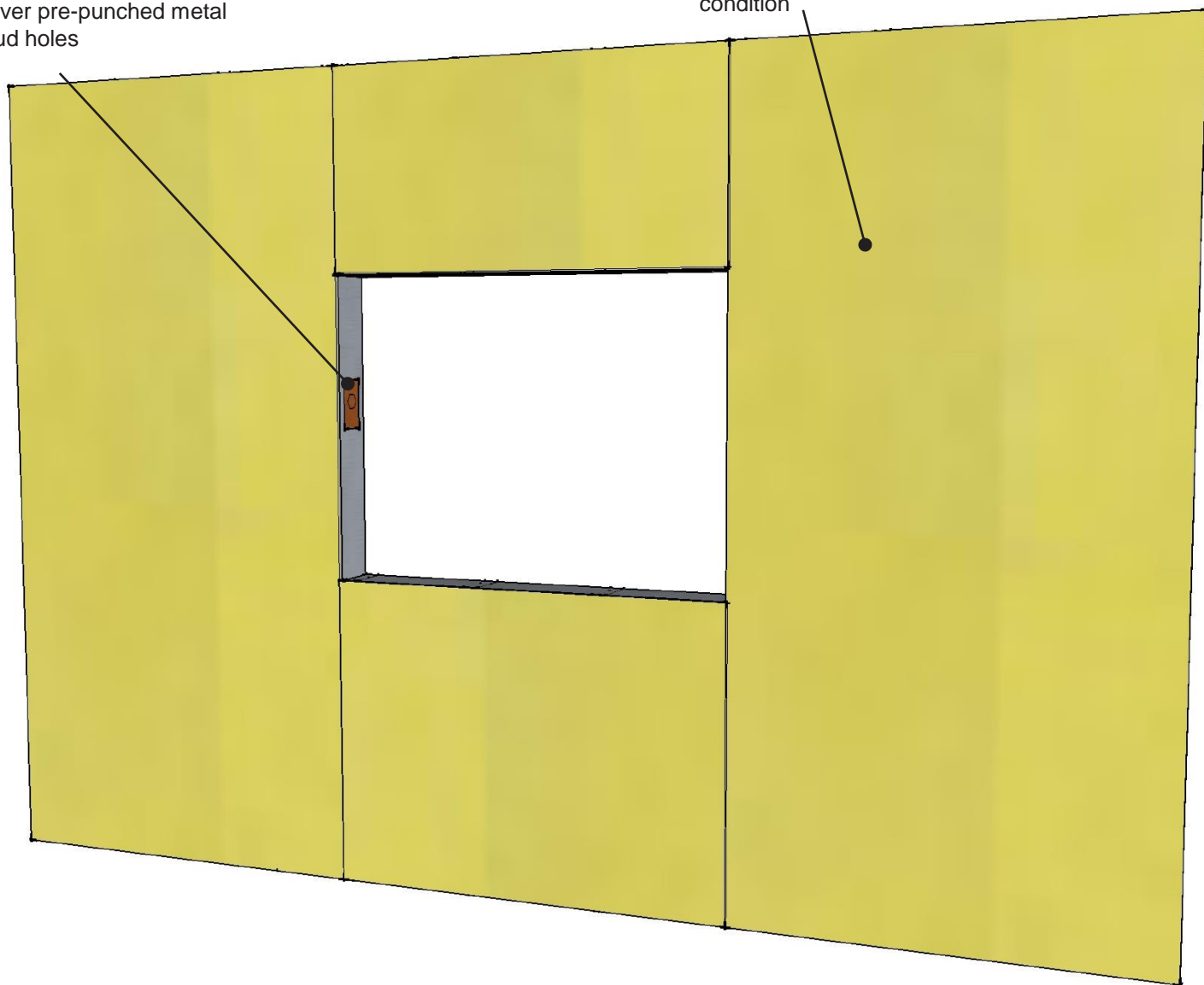


# Step 1: Commercial Window RO Flashing System

WrapFlashing SA Self-Adhered scraps adhere to cover pre-punched metal stud holes

Sheathing in "as new" condition



## VAPROLIQUI-FLASH™

Step 1: Inspect rough opening, patch pre-punched holes with WrapFlashing SA

### PRODUCT DESCRIPTION

VaproLiqui-Flash is a liquid applied, vapor permeable, waterproof, air barrier flashing system component for window and door rough openings. VaproLiquiFlash is designed to work with WrapFlashing and VaproShield field membranes as a complete system.

### DISCLAIMER

Detail sketch is generic, representing suggested best practices for VaproShield materials, and does not represent a specific job site condition and therefore may not be applicable to certain projects. Detail sketch is designed for use as a reference and must be approved by the designer/ consultant of record for each project prior to installation by the subcontractor. Changes and approvals of VaproShield details are the sole responsibility of the designer/consultant of record. VaproShield is **not** the designer of record for building enclosure details and takes no responsibility for the accuracy or interpretation of actual project site conditions.

DRAWN BY: AR

DATE: 03.15.16

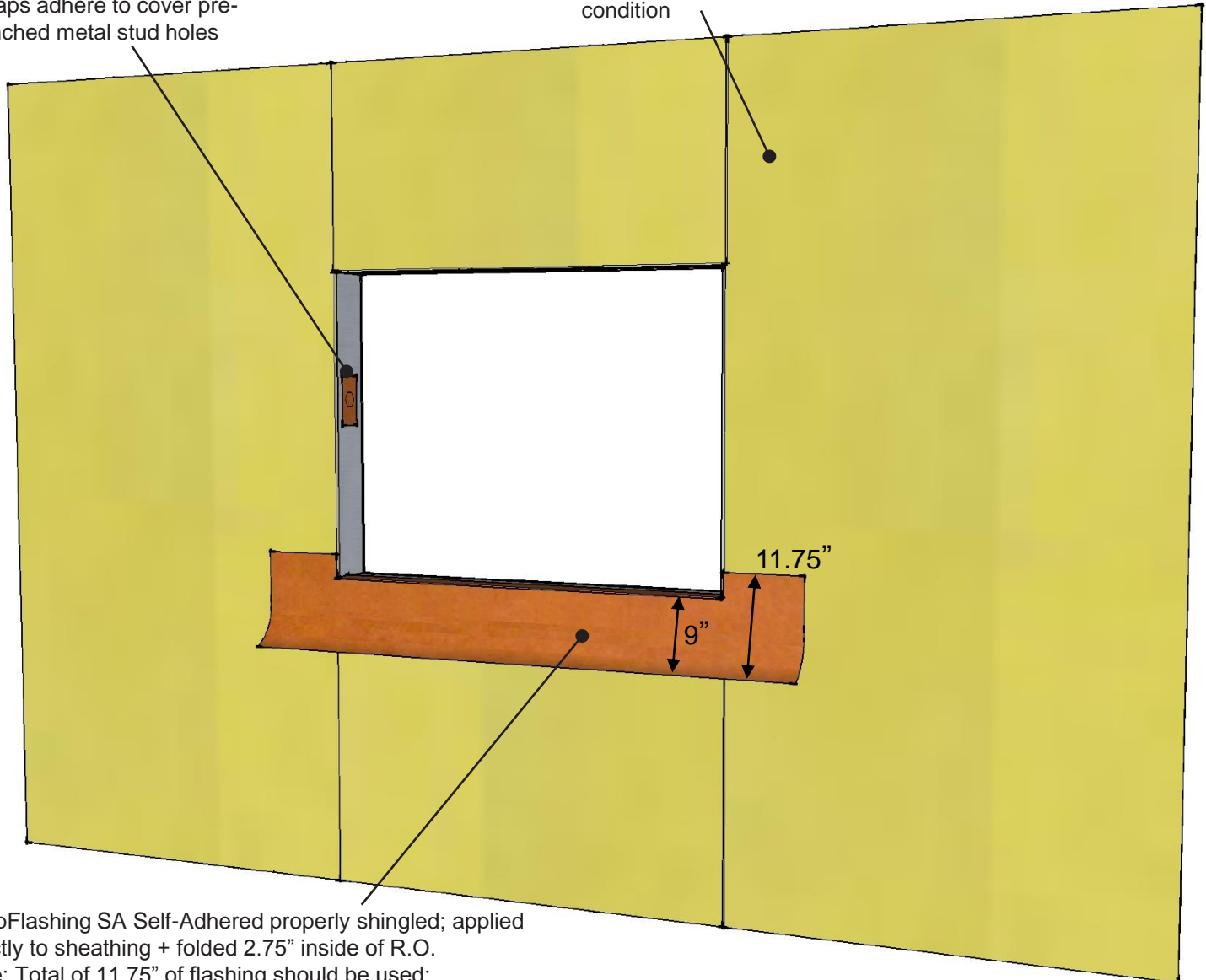
REF: 111-1

Always check [www.VaproShield.com](http://www.VaproShield.com) for the latest details and installation instructions

## Step 2: Commercial Window RO Flashing System

WrapFlashing SA Self-Adhered scraps adhere to cover pre-punched metal stud holes

Sheathing in "as new" condition



WrapFlashing SA Self-Adhered properly shingled; applied directly to sheathing + folded 2.75" inside of R.O.

**Note:** Total of 11.75" of flashing should be used:

- 9" of flashing should be left on the face of the sheathing
- 6" of release film from the bottom of the flashing to be left attached for shingling over membrane.

### VAPROLIQUI-FLASH™

Step 2: Install WrapFlashing SA into sill with 2.75" folded into R.O. 9" left on face, with bottom 6" of release film to remain attached.

#### PRODUCT DESCRIPTION

VaproLiqui-Flash is a liquid applied, vapor permeable, waterproof, air barrier flashing system component for window and door rough openings. VaproLiquiFlash is designed to work with WrapFlashing and VaproShield field membranes as a complete system.

#### DISCLAIMER

Detail sketch is generic, representing suggested best practices for VaproShield materials, and does not represent a specific job site condition and therefore may not be applicable to certain projects. Detail sketch is designed for use as a reference and must be approved by the designer/consultant of record for each project prior to installation by the subcontractor. Changes and approvals of VaproShield details are the sole responsibility of the designer/consultant of record. VaproShield is **not** the designer of record for building enclosure details and takes no responsibility for the accuracy or interpretation of actual project site conditions.

DRAWN BY: AR

DATE: 03.15.16

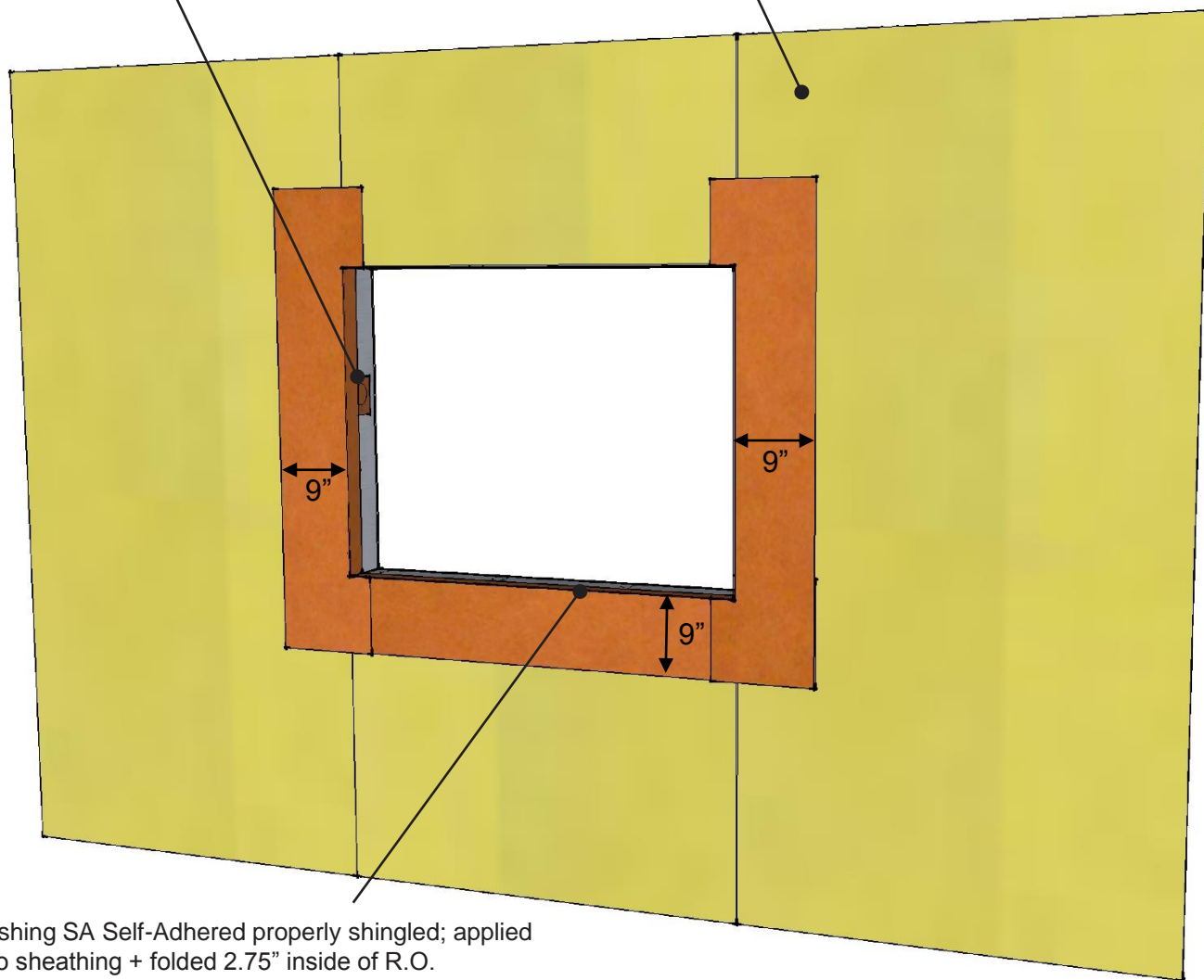
REF: 111-2

Always check [www.VaproShield.com](http://www.VaproShield.com) for the latest details and installation instructions

## Step 3: Commercial Window RO Flashing System

WrapFlashing SA Self-Adhered scraps adhere to cover pre-punched metal stud holes

Sheathing in "as new" condition



WrapFlashing SA Self-Adhered properly shingled; applied directly to sheathing + folded 2.75" inside of R.O.

**Note:** Total of 11.75" of flashing should be used:

- 9" of flashing should be left on the face of the sheathing
- 6" of release film from the bottom of the flashing to be left attached for shingling over membrane.

### VAPROLIQUI-FLASH™

Step 3: Install jamb pieces with 2.75" folded into R.O. 9" to be left on face.

#### PRODUCT DESCRIPTION

VaproLiqui-Flash is a liquid applied, vapor permeable, waterproof, air barrier flashing system component for window and door rough openings. VaproLiquiFlash is designed to work with WrapFlashing and VaproShield field membranes as a complete system.

#### DISCLAIMER

Detail sketch is generic, representing suggested best practices for VaproShield materials, and does not represent a specific job site condition and therefore may not be applicable to certain projects. Detail sketch is designed for use as a reference and must be approved by the designer/ consultant of record for each project prior to installation by the subcontractor. Changes and approvals of VaproShield details are the sole responsibility of the designer/consultant of record. VaproShield is **not** the designer of record for building enclosure details and takes no responsibility for the accuracy or interpretation of actual project site conditions.

DRAWN BY: AR

DATE: 03.15.16

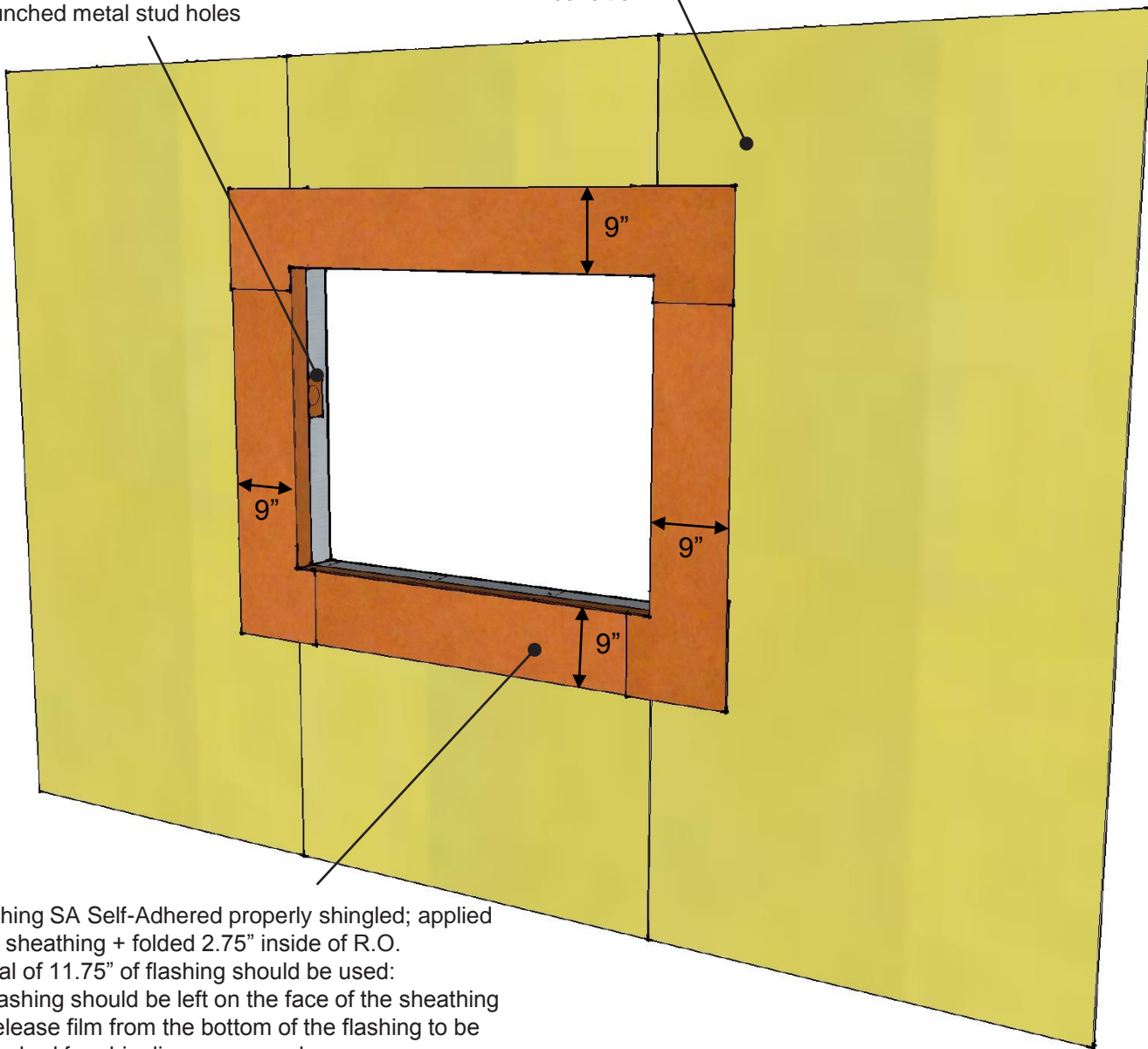
REF: 111-3

Always check [www.VaproShield.com](http://www.VaproShield.com) for the latest details and installation instructions

## Step 4: Commercial Window RO Flashing System

WrapFlashing SA Self-Adhered scraps adhere to cover pre-punched metal stud holes

Sheathing in "as new" condition



WrapFlashing SA Self-Adhered properly shingled; applied directly to sheathing + folded 2.75" inside of R.O.

**Note:** Total of 11.75" of flashing should be used:

- 9" of flashing should be left on the face of the sheathing
- 6" of release film from the bottom of the flashing to be left attached for shingling over membrane.

### VAPROLIQUI-FLASH™

Step 4: Install head piece with 2.75" folded into R.O. 9" to be left on face.

#### PRODUCT DESCRIPTION

VaproLiqui-Flash is a liquid applied, vapor permeable, waterproof, air barrier flashing system component for window and door rough openings. VaproLiquiFlash is designed to work with WrapFlashing and VaproShield field membranes as a complete system.

#### DISCLAIMER

Detail sketch is generic, representing suggested best practices for VaproShield materials, and does not represent a specific job site condition and therefore may not be applicable to certain projects. Detail sketch is designed for use as a reference and must be approved by the designer/ consultant of record for each project prior to installation by the subcontractor. Changes and approvals of VaproShield details are the sole responsibility of the designer/consultant of record. VaproShield is **not** the designer of record for building enclosure details and takes no responsibility for the accuracy or interpretation of actual project site conditions.

DRAWN BY: AR

DATE: 03.15.16

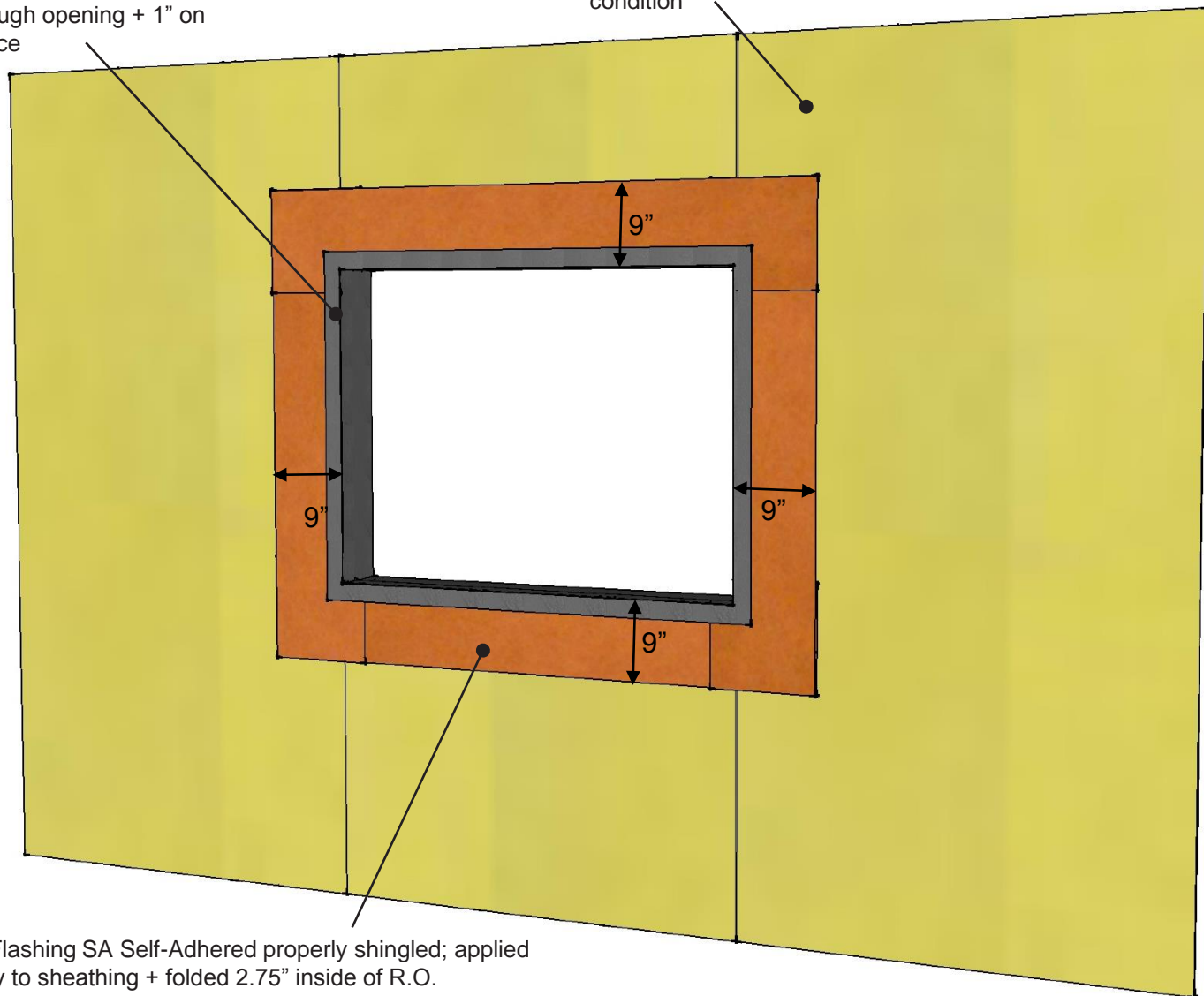
REF: 111-4

Always check [www.VaproShield.com](http://www.VaproShield.com) for the latest details and installation instructions

# Step 5: Commercial Window RO Flashing System

VaproLiqui-Flash  
full-coverage inside  
rough opening + 1" on  
face

Sheathing in "as new"  
condition



WrapFlashing SA Self-Adhered properly shingled; applied directly to sheathing + folded 2.75" inside of R.O.

**Note:** Total of 11.75" of flashing should be used:

- 9" of flashing should be left on the face of the sheathing
- 6" of release film from the bottom of the flashing to be left attached for shingling over membrane.

## VAPROLIQUI-FLASH™

Step 5: Apply VaproLiqui-Flash to inside of R.O. (full coverage) and 1" on face

### PRODUCT DESCRIPTION

VaproLiqui-Flash is a liquid applied, vapor permeable, waterproof, air barrier flashing system component for window and door rough openings. VaproLiquiFlash is designed to work with WrapFlashing and VaproShield field membranes as a complete system.

### DISCLAIMER

Detail sketch is generic, representing suggested best practices for VaproShield materials, and does not represent a specific job site condition and therefore may not be applicable to certain projects. Detail sketch is designed for use as a reference and must be approved by the designer/ consultant of record for each project prior to installation by the subcontractor. Changes and approvals of VaproShield details are the sole responsibility of the designer/consultant of record. VaproShield is **not** the designer of record for building enclosure details and takes no responsibility for the accuracy or interpretation of actual project site conditions.

DRAWN BY: AR

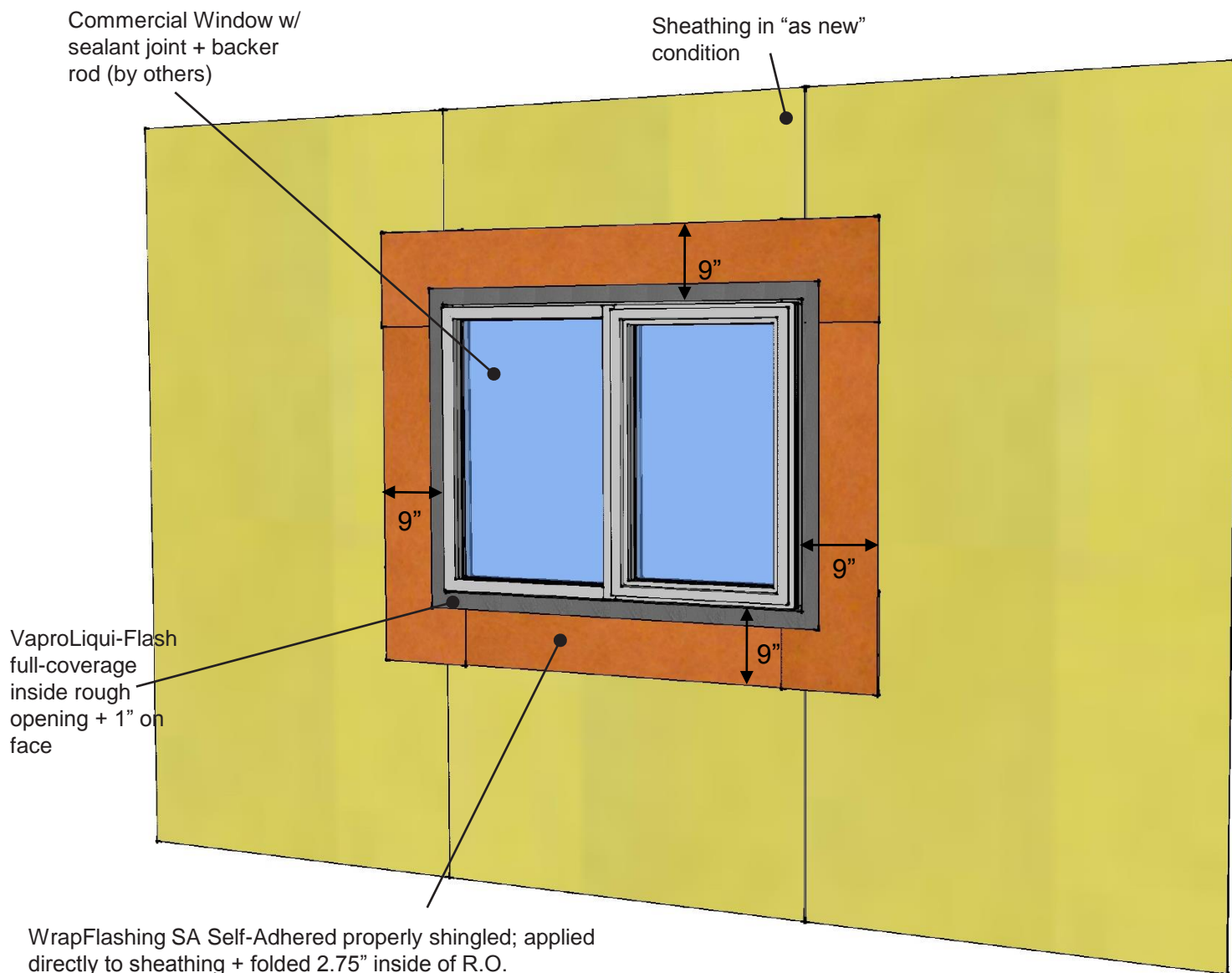
DATE: 03.15.16

REF: 111-5

Always check [www.VaproShield.com](http://www.VaproShield.com) for the latest details and installation instructions



## Step 6: Commercial Window RO Flashing System



WrapFlashing SA Self-Adhered properly shingled; applied directly to sheathing + folded 2.75" inside of R.O.

**Note:** Total of 11.75" of flashing should be used:

- 9" of flashing should be left on the face of the sheathing
- 6" of release film from the bottom of the flashing to be left attached for shingling over membrane.

### VAPROLIQUI-FLASH™

Step 6: Install commercial window w/ perimeter sealant joint and backer rod (by others)

#### PRODUCT DESCRIPTION

VaproLiqui-Flash is a liquid applied, vapor permeable, waterproof, air barrier flashing system component for window and door rough openings. VaproLiquiFlash is designed to work with WrapFlashing and VaproShield field membranes as a complete system.

#### DISCLAIMER

Detail sketch is generic, representing suggested best practices for VaproShield materials, and does not represent a specific job site condition and therefore may not be applicable to certain projects. Detail sketch is designed for use as a reference and must be approved by the designer/ consultant of record for each project prior to installation by the subcontractor. Changes and approvals of VaproShield details are the sole responsibility of the designer/consultant of record. VaproShield is **not** the designer of record for building enclosure details and takes no responsibility for the accuracy or interpretation of actual project site conditions.

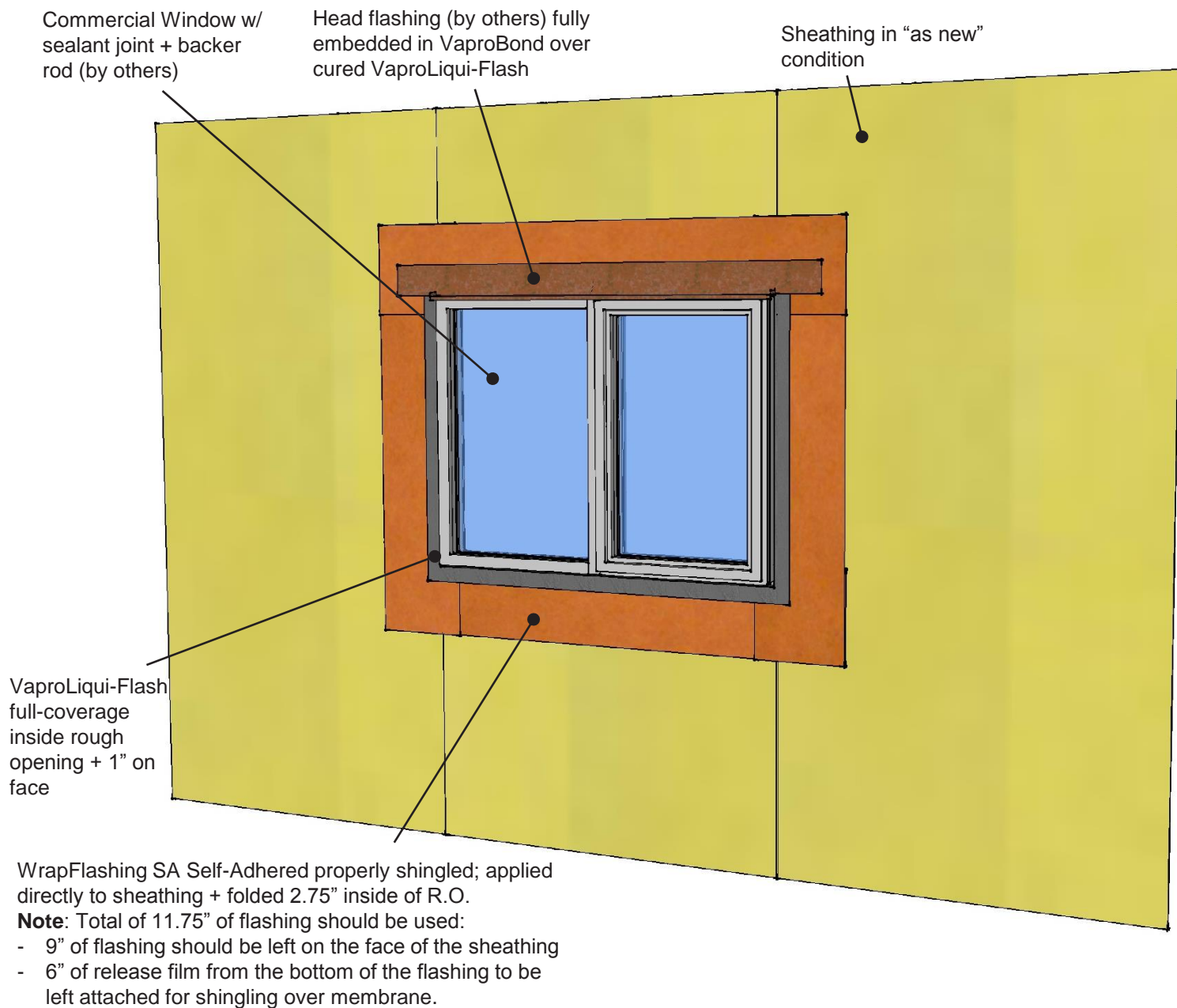
DRAWN BY: AR

DATE: 03.15.16

REF: 111-6

Always check [www.VaproShield.com](http://www.VaproShield.com) for the latest details and installation instructions

# Step 7: Commercial Window RO Flashing System



## VAPROLIQUI-FLASH™

Step 7: Install metal head flashing (by others) fully embedded in VaproBond over cured VaproLiqui-Flash

### PRODUCT DESCRIPTION

VaproLiqui-Flash is a liquid applied, vapor permeable, waterproof, air barrier flashing system component for window and door rough openings. VaproLiquiFlash is designed to work with WrapFlashing and VaproShield field membranes as a complete system.

### DISCLAIMER

Detail sketch is generic, representing suggested best practices for VaproShield materials, and does not represent a specific job site condition and therefore may not be applicable to certain projects. Detail sketch is designed for use as a reference and must be approved by the designer/ consultant of record for each project prior to installation by the subcontractor. Changes and approvals of VaproShield details are the sole responsibility of the designer/consultant of record. VaproShield is **not** the designer of record for building enclosure details and takes no responsibility for the accuracy or interpretation of actual project site conditions.

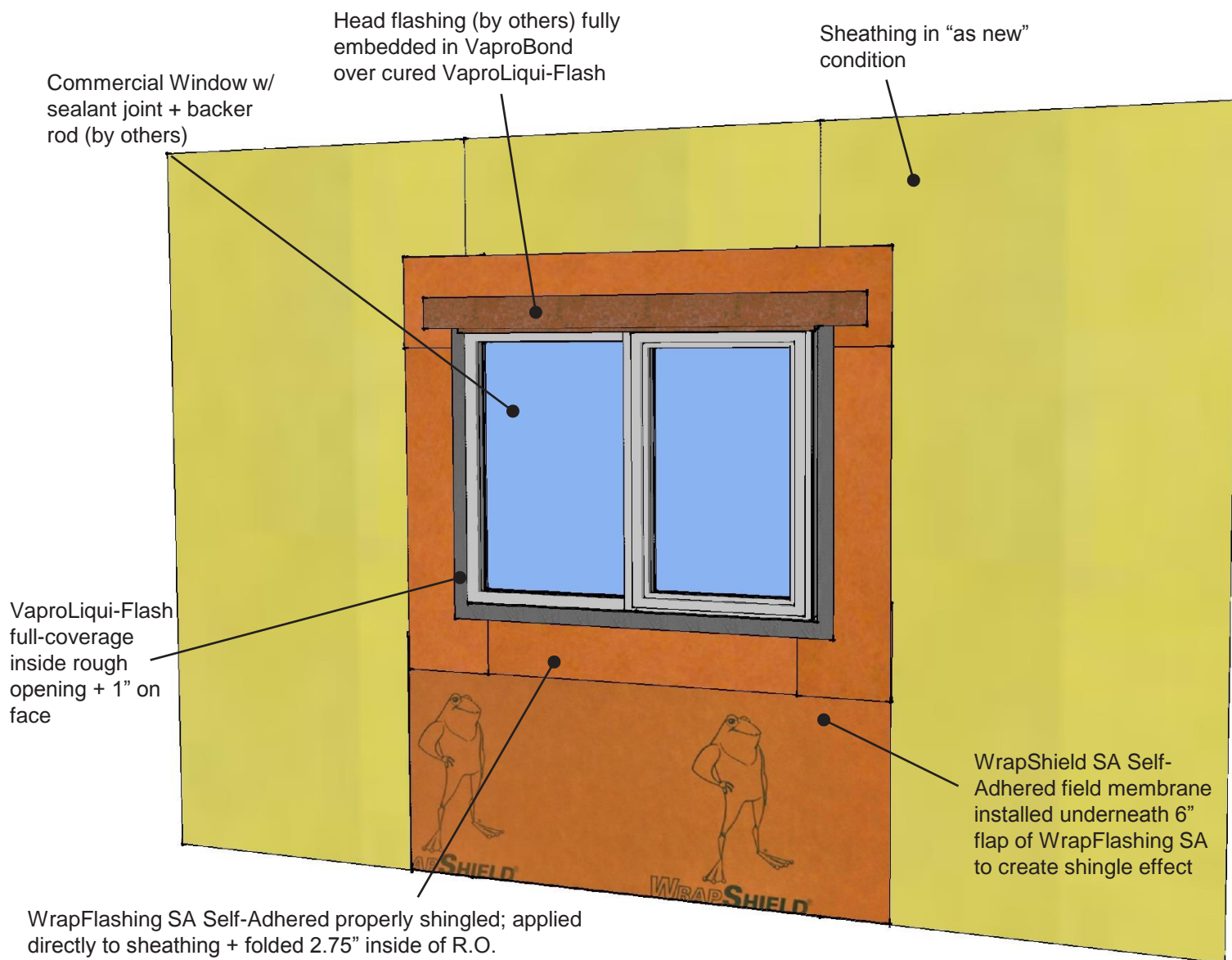
DRAWN BY: AR

DATE: 03.15.16

REF: 111-7

Always check [www.VaproShield.com](http://www.VaproShield.com) for the latest details and installation instructions

## Step 8: Commercial Window RO Flashing System



WrapFlashing SA Self-Adhered properly shingled; applied directly to sheathing + folded 2.75" inside of R.O.

**Note:** Total of 11.75" of flashing should be used:

- 9" of flashing should be left on the face of the sheathing
- Remove release film from flashing and adhere bottom 6" to field membrane.

### VAPROLIQUI-FLASH™

Step 8: Install field membrane underneath 6" flap of sill flashing to create shingle effect, remove release film, adhere to membrane

#### PRODUCT DESCRIPTION

VaproLiqui-Flash is a liquid applied, vapor permeable, waterproof, air barrier flashing system component for window and door rough openings. VaproLiquiFlash is designed to work with WrapFlashing and VaproShield field membranes as a complete system.

#### DISCLAIMER

Detail sketch is generic, representing suggested best practices for VaproShield materials, and does not represent a specific job site condition and therefore may not be applicable to certain projects. Detail sketch is designed for use as a reference and must be approved by the designer/ consultant of record for each project prior to installation by the subcontractor. Changes and approvals of VaproShield details are the sole responsibility of the designer/consultant of record. VaproShield is **not** the designer of record for building enclosure details and takes no responsibility for the accuracy or interpretation of actual project site conditions.

DRAWN BY: AR

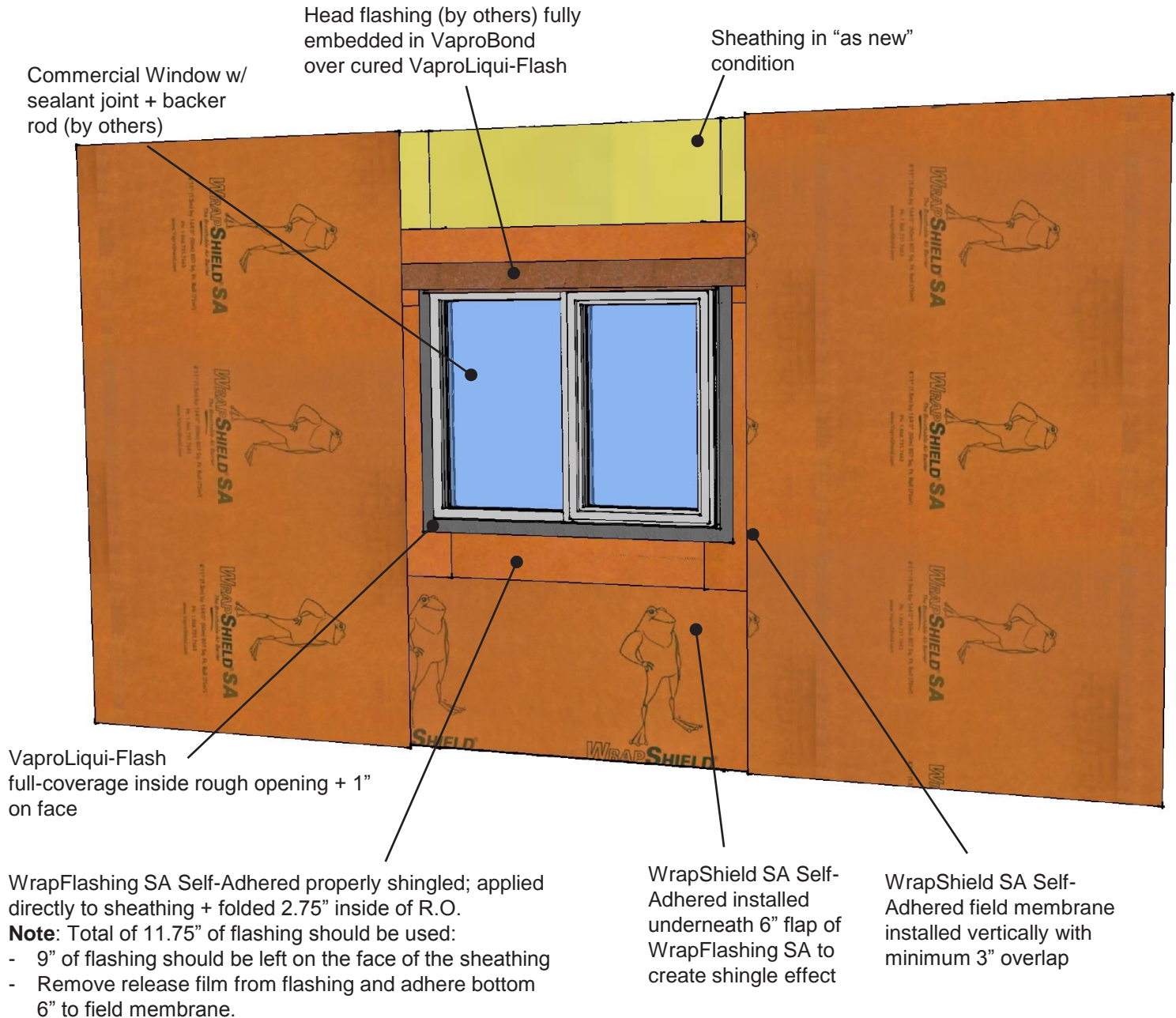
DATE: 03.16.16

REF: 111-8

Always check [www.VaproShield.com](http://www.VaproShield.com) for the latest details and installation instructions



## Step 9: Commercial Window RO Flashing System



### VAPROLIQUI-FLASH™

Step 9: Install field membrane vertically to sheathing, maintaining 3" minimum overlap with R.O. flashing

#### PRODUCT DESCRIPTION

VaproLiqui-Flash is a liquid applied, vapor permeable, waterproof, air barrier flashing system component for window and door rough openings. VaproLiquiFlash is designed to work with WrapFlashing and VaproShield field membranes as a complete system.

#### DISCLAIMER

Detail sketch is generic, representing suggested best practices for VaproShield materials, and does not represent a specific job site condition and therefore may not be applicable to certain projects. Detail sketch is designed for use as a reference and must be approved by the designer/ consultant of record for each project prior to installation by the subcontractor. Changes and approvals of VaproShield details are the sole responsibility of the designer/consultant of record. VaproShield is **not** the designer of record for building enclosure details and takes no responsibility for the accuracy or interpretation of actual project site conditions.

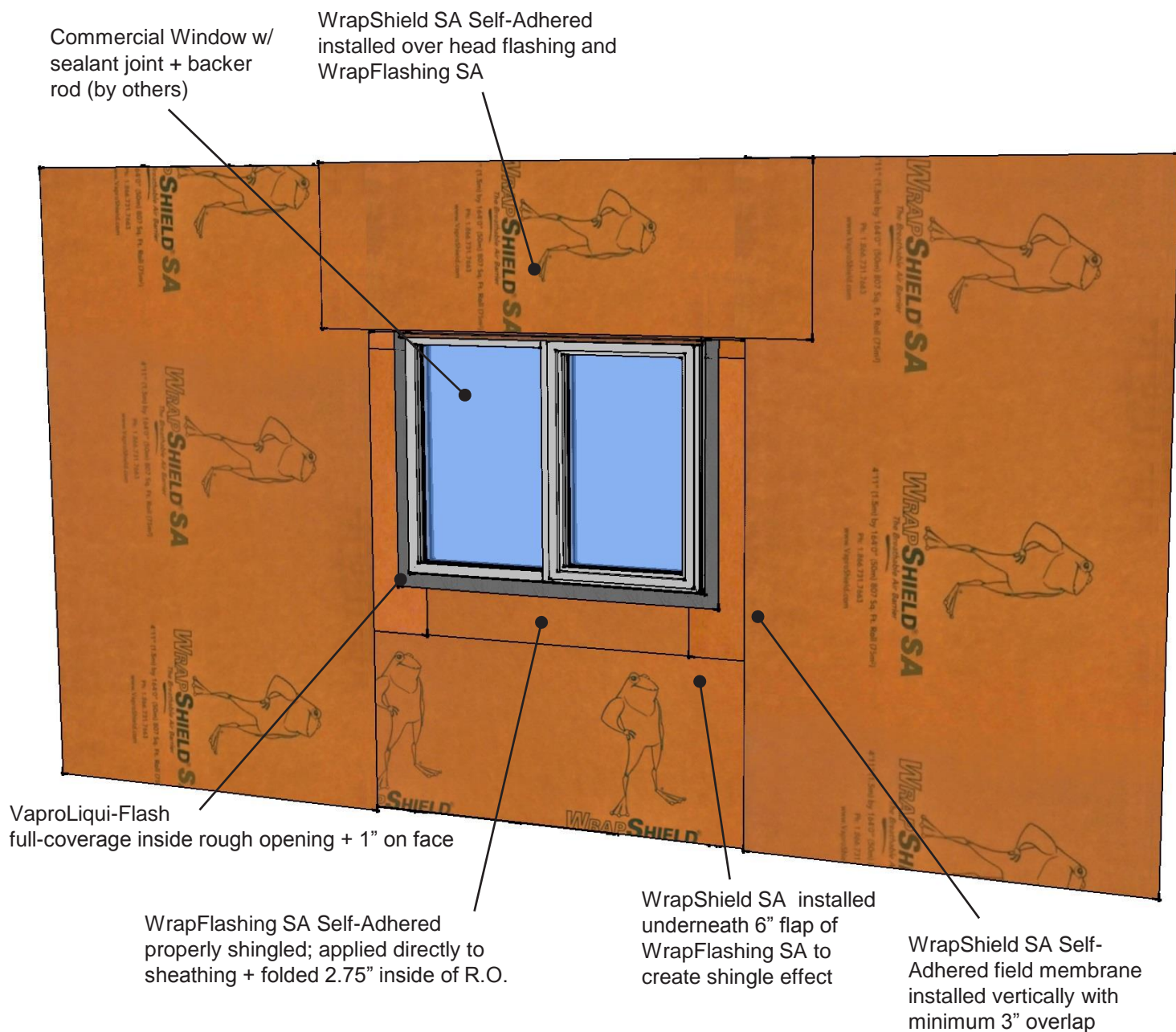
DRAWN BY: AR

DATE: 03.16.16

REF: 111-9

Always check [www.VaproShield.com](http://www.VaproShield.com) for the latest details and installation instructions

# Step 10: Commercial Window RO Flashing System



## VAPROLIQUI-FLASH™

Step 10: Install field membrane over metal head flashing, maintaining 3" minimum overlap to adjacent field membrane.

### PRODUCT DESCRIPTION

VaproLiqui-Flash is a liquid applied, vapor permeable, waterproof, air barrier flashing system component for window and door rough openings. VaproLiquiFlash is designed to work with WrapFlashing and VaproShield field membranes as a complete system.

### DISCLAIMER

Detail sketch is generic, representing suggested best practices for VaproShield materials, and does not represent a specific job site condition and therefore may not be applicable to certain projects. Detail sketch is designed for use as a reference and must be approved by the designer/ consultant of record for each project prior to installation by the subcontractor. Changes and approvals of VaproShield details are the sole responsibility of the designer/consultant of record. VaproShield is **not** the designer of record for building enclosure details and takes no responsibility for the accuracy or interpretation of actual project site conditions.

DRAWN BY: AR

DATE: 03.16.16

REF: 111-10

Always check [www.VaproShield.com](http://www.VaproShield.com) for the latest details and installation instructions