

#### PRODUCT DESCRIPTION

SlopeShield Plus Self-Adhered is a highly vapor permeable roofing underlayment Air Barrier (AB) material

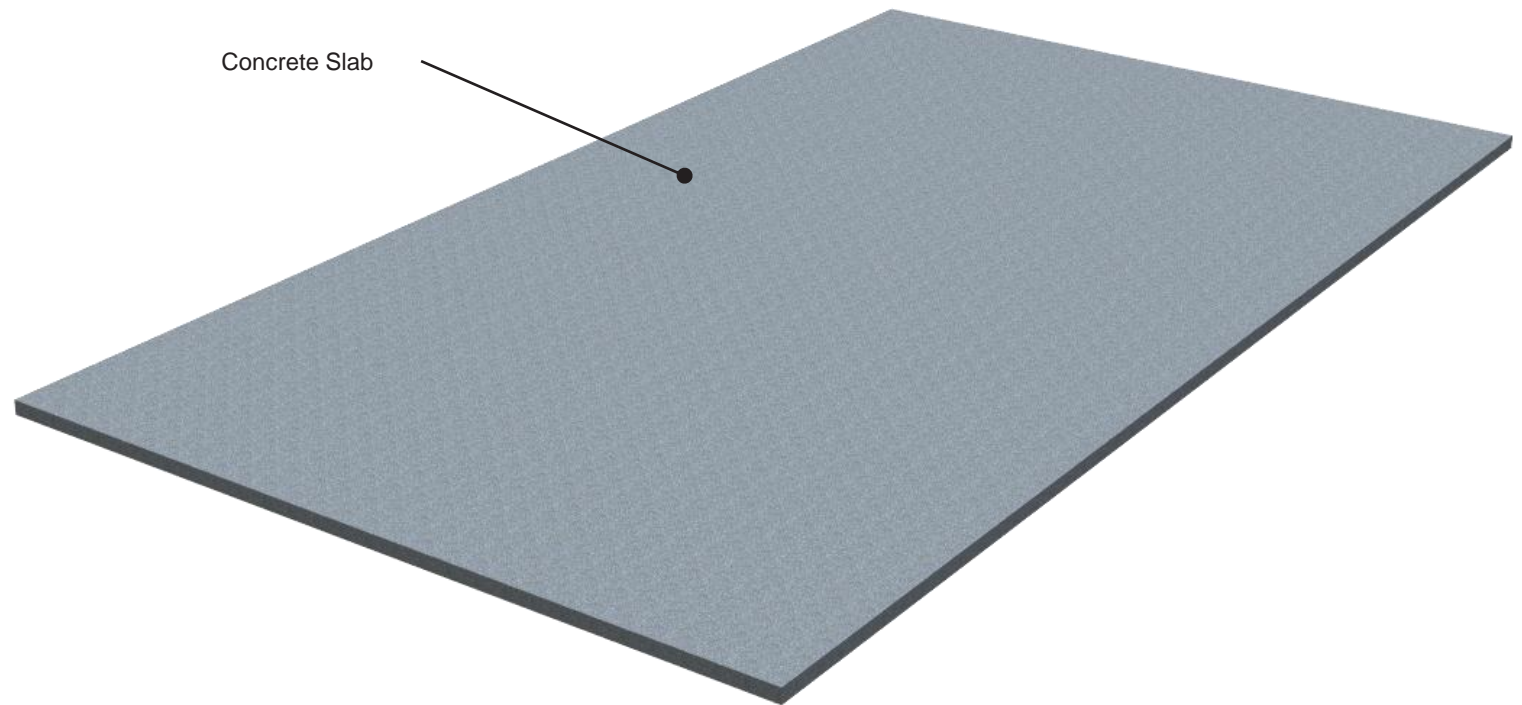
WallShield IT Integrated Tape is a primary, water resistive, vapor permeable, air permeable, mechanically attached sheet membrane

#### DISCLAIMER

Detail sketch is generic, representing suggested best practices for VaproShield materials, and does not represent a specific job site condition and therefore may not be applicable to certain projects. Detail sketch is designed for use as a reference and must be approved by the designer/ consultant of record for each project prior to installation by the subcontractor. Changes and approvals of VaproShield details are the sole responsibility of the designer/consultant of record. VaproShield is **not** the designer of record for building enclosure details and takes no responsibility for the accuracy or interpretation of actual project site conditions.

Always check [www.VaproShield.com](http://www.VaproShield.com) for the latest details and installation instructions

VaproShield LLC  
915 26th Ave. N.W. Suite C5  
Gig Harbor, WA 98335  
Toll Free: 1.866.731.7663  
[www.VaproShield.com](http://www.VaproShield.com)  
© VaproShield 3/15/2016



#### PRODUCT DESCRIPTION

SlopeShield Plus Self-Adhered is a highly vapor permeable roofing underlayment Air Barrier (AB) material

WallShield IT Integrated Tape is a primary, water resistive, vapor permeable, air permeable, mechanically attached sheet membrane

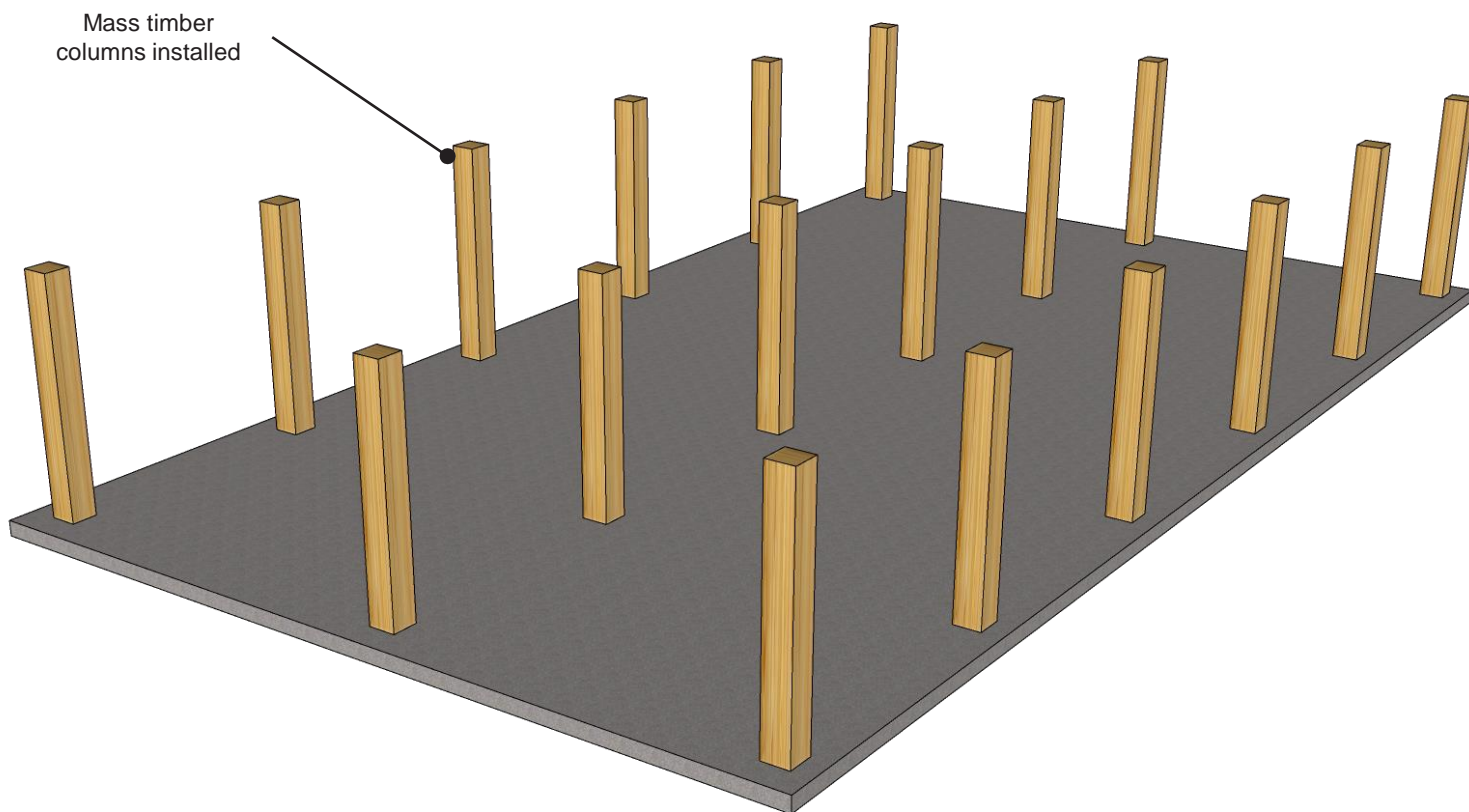
#### DISCLAIMER

Detail sketch is generic, representing suggested best practices for VaproShield materials, and does not represent a specific job site condition and therefore may not be applicable to certain projects. Detail sketch is designed for use as a reference and must be approved by the designer/ consultant of record for each project prior to installation by the subcontractor. Changes and approvals of VaproShield details are the sole responsibility of the designer/consultant of record. VaproShield is **not** the designer of record for building enclosure details and takes no responsibility for the accuracy or interpretation of actual project site conditions.

Always check [www.VaproShield.com](http://www.VaproShield.com) for the latest details and installation instructions

VaproShield LLC  
915 26th Ave. N.W. Suite C5  
Gig Harbor, WA 98335  
Toll Free: 1.866.731.7663  
[www.VaproShield.com](http://www.VaproShield.com)  
© VaproShield 3/15/2016

## Mass Timber Building Sequence



#### PRODUCT DESCRIPTION

SlopeShield Plus Self-Adhered is a highly vapor permeable roofing underlayment Air Barrier (AB) material

WallShield IT Integrated Tape is a primary, water resistive, vapor permeable, air permeable, mechanically attached sheet membrane

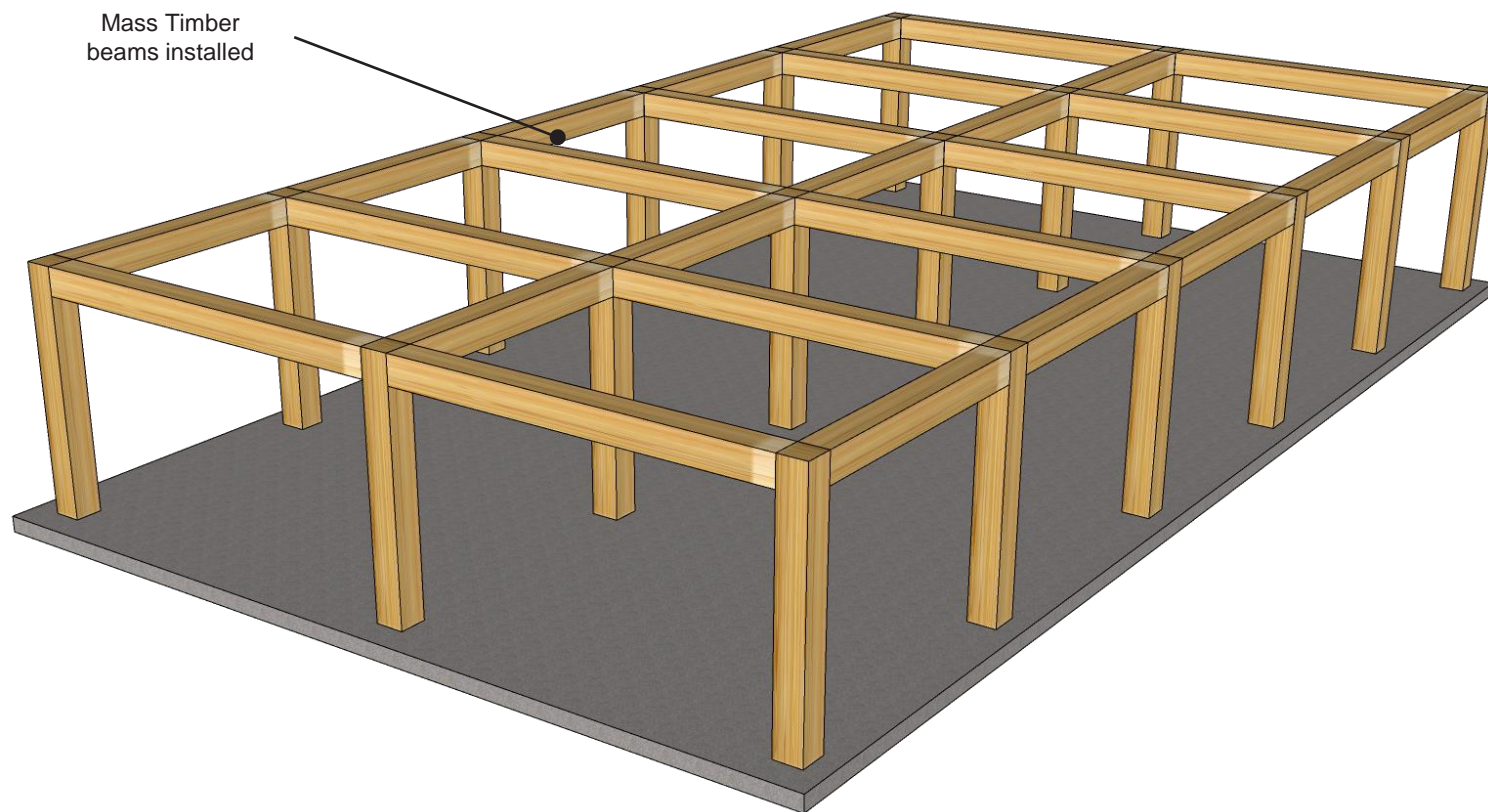
#### DISCLAIMER

Detail sketch is generic, representing suggested best practices for VaproShield materials, and does not represent a specific job site condition and therefore may not be applicable to certain projects. Detail sketch is designed for use as a reference and must be approved by the designer/ consultant of record for each project prior to installation by the subcontractor. Changes and approvals of VaproShield details are the sole responsibility of the designer/consultant of record. VaproShield is **not** the designer of record for building enclosure details and takes no responsibility for the accuracy or interpretation of actual project site conditions.

Always check [www.VaproShield.com](http://www.VaproShield.com) for the latest details and installation instructions

VaproShield LLC  
915 26th Ave. N.W. Suite C5  
Gig Harbor, WA 98335  
Toll Free: 1.866.731.7663  
[www.VaproShield.com](http://www.VaproShield.com)  
© VaproShield 3/15/2016

## Mass Timber Building Sequence



## PRODUCT DESCRIPTION

SlopeShield Plus Self-Adhered is a highly vapor permeable roofing underlayment Air Barrier (AB) material

WallShield IT Integrated Tape is a primary, water resistive, vapor permeable, air permeable, mechanically attached sheet membrane

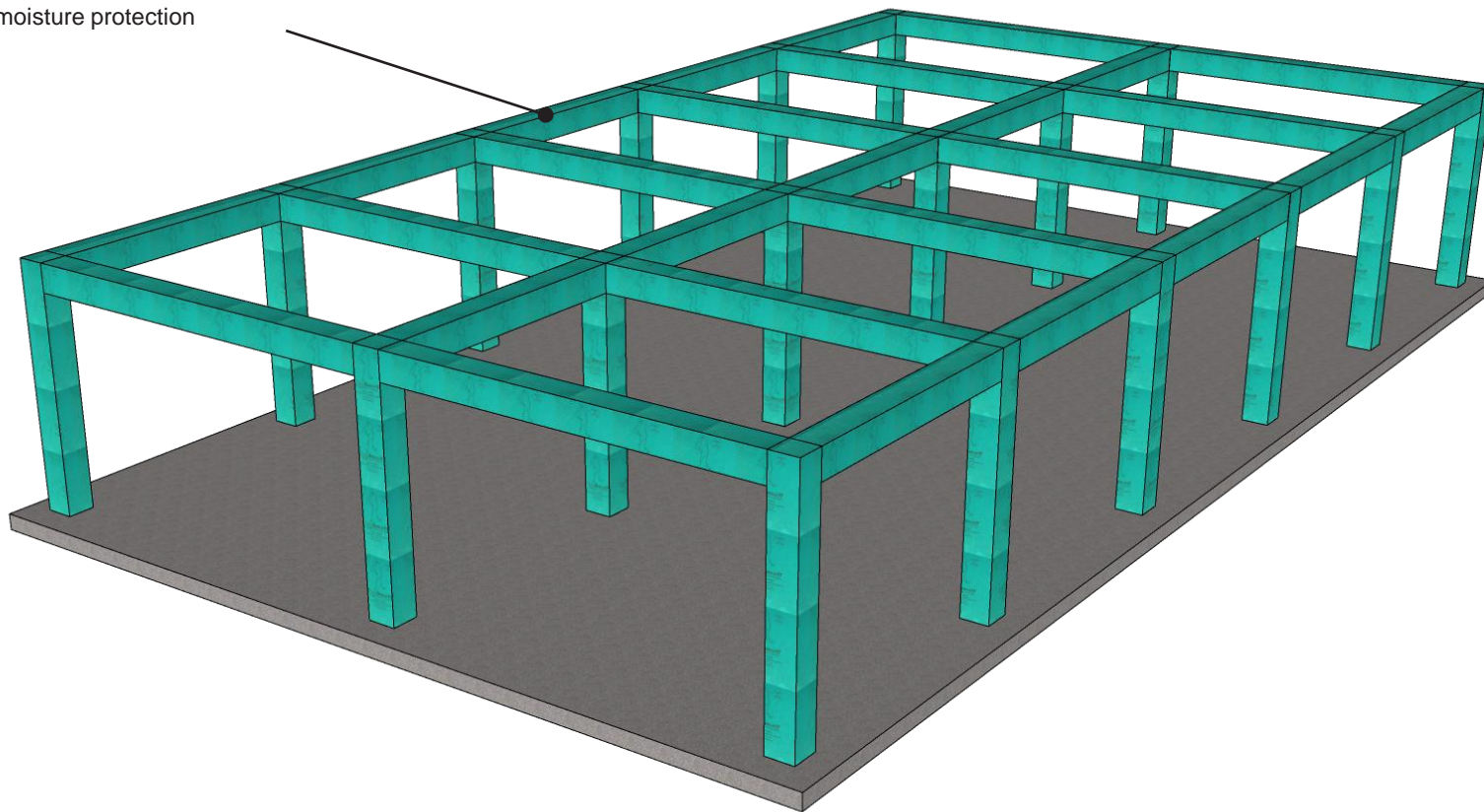
## DISCLAIMER

Detail sketch is generic, representing suggested best practices for VaproShield materials, and does not represent a specific job site condition and therefore may not be applicable to certain projects. Detail sketch is designed for use as a reference and must be approved by the designer/ consultant of record for each project prior to installation by the subcontractor. Changes and approvals of VaproShield details are the sole responsibility of the designer/consultant of record. VaproShield is **not** the designer of record for building enclosure details and takes no responsibility for the accuracy or interpretation of actual project site conditions.

Always check [www.VaproShield.com](http://www.VaproShield.com) for the latest details and installation instructions

VaproShield LLC  
915 26th Ave. N.W. Suite C5  
Gig Harbor, WA 98335  
Toll Free: 1.866.731.7663  
[www.VaproShield.com](http://www.VaproShield.com)  
© VaproShield 3/15/2016

WallShield IT installed on mass timber columns and beams for moisture protection





#### PRODUCT DESCRIPTION

SlopeShield Plus Self-Adhered is a highly vapor permeable roofing underlayment Air Barrier (AB) material

WallShield IT Integrated Tape is a primary, water resistive, vapor permeable, air permeable, mechanically attached sheet membrane

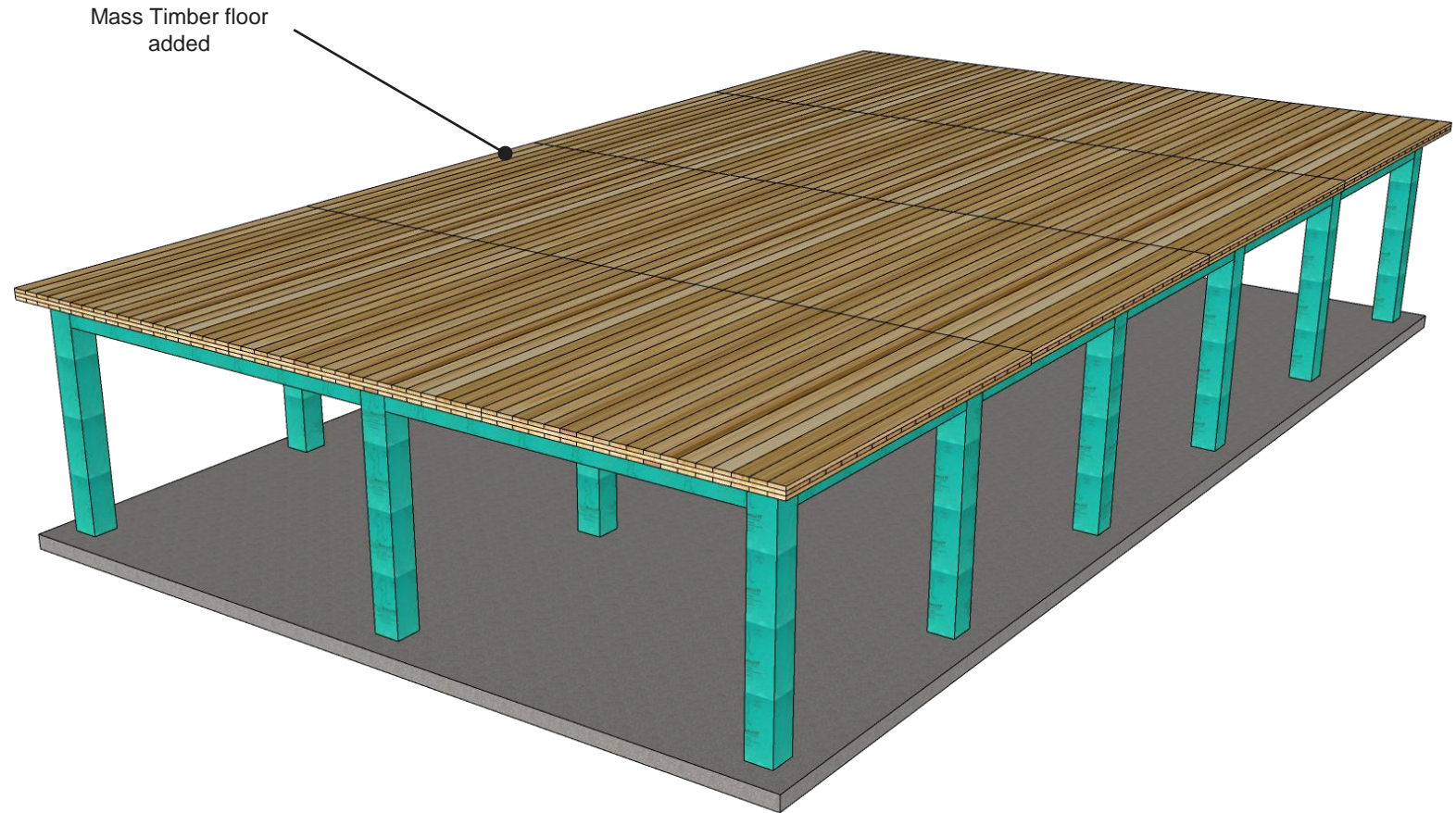
#### DISCLAIMER

Detail sketch is generic, representing suggested best practices for VaproShield materials, and does not represent a specific job site condition and therefore may not be applicable to certain projects. Detail sketch is designed for use as a reference and must be approved by the designer/ consultant of record for each project prior to installation by the subcontractor. Changes and approvals of VaproShield details are the sole responsibility of the designer/consultant of record. VaproShield is **not** the designer of record for building enclosure details and takes no responsibility for the accuracy or interpretation of actual project site conditions.

Always check [www.VaproShield.com](http://www.VaproShield.com) for the latest details and installation instructions

VaproShield LLC  
915 26th Ave. N.W. Suite C5  
Gig Harbor, WA 98335  
Toll Free: 1.866.731.7663  
[www.VaproShield.com](http://www.VaproShield.com)  
© VaproShield 3/15/2016

## Mass Timber Building Sequence



#### PRODUCT DESCRIPTION

SlopeShield Plus Self-Adhered is a highly vapor permeable roofing underlayment Air Barrier (AB) material

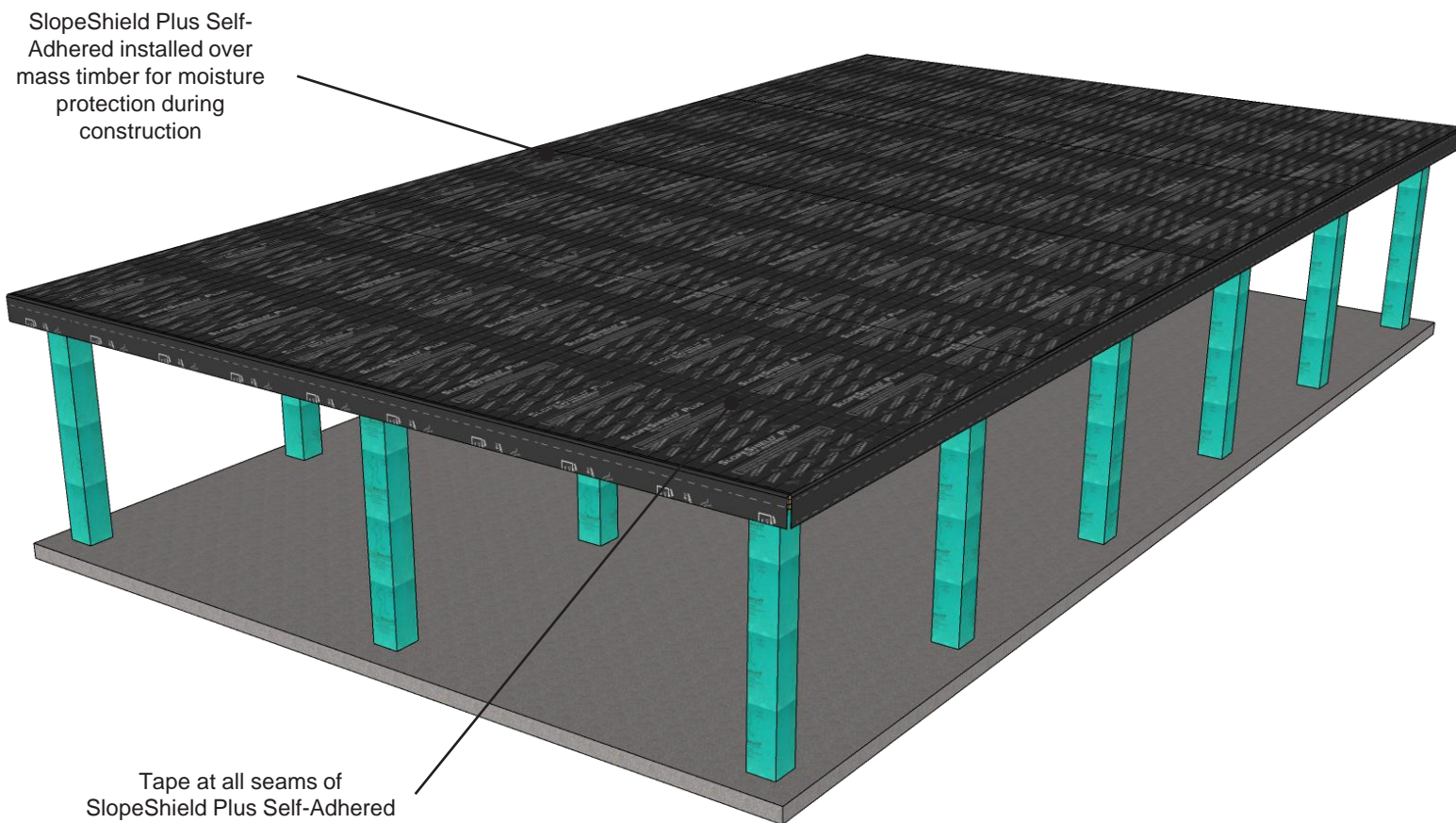
WallShield IT Integrated Tape is a primary, water resistive, vapor permeable, air permeable, mechanically attached sheet membrane

#### DISCLAIMER

Detail sketch is generic, representing suggested best practices for VaproShield materials, and does not represent a specific job site condition and therefore may not be applicable to certain projects. Detail sketch is designed for use as a reference and must be approved by the designer/ consultant of record for each project prior to installation by the subcontractor. Changes and approvals of VaproShield details are the sole responsibility of the designer/consultant of record. VaproShield is **not** the designer of record for building enclosure details and takes no responsibility for the accuracy or interpretation of actual project site conditions.

Always check [www.VaproShield.com](http://www.VaproShield.com) for the latest details and installation instructions

VaproShield LLC  
915 26th Ave. N.W. Suite C5  
Gig Harbor, WA 98335  
Toll Free: 1.866.731.7663  
[www.VaproShield.com](http://www.VaproShield.com)  
© VaproShield 3/15/2016





#### PRODUCT DESCRIPTION

SlopeShield Plus Self-Adhered is a highly vapor permeable roofing underlayment Air Barrier (AB) material

WallShield IT Integrated Tape is a primary, water resistive, vapor permeable, air permeable, mechanically attached sheet membrane

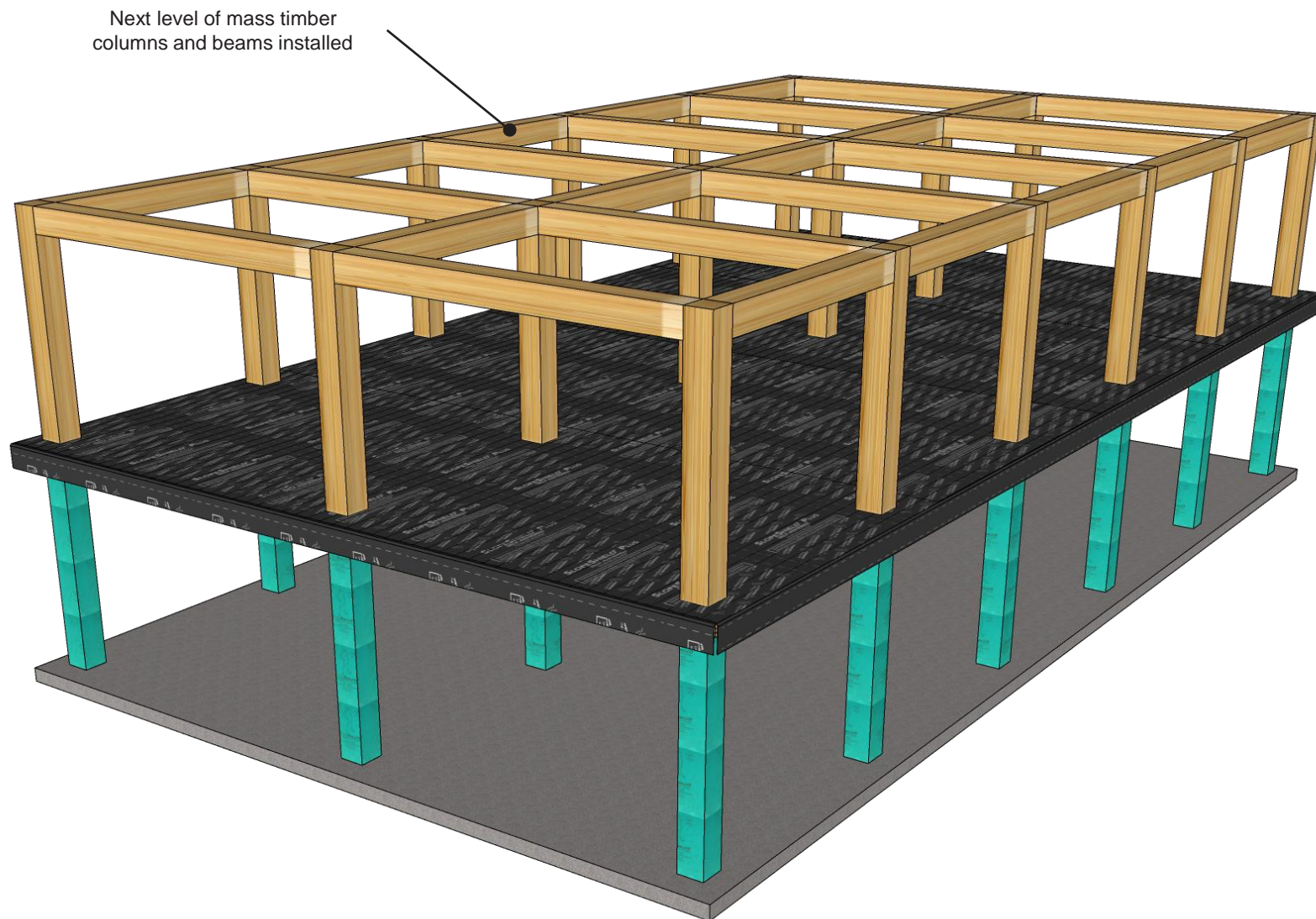
#### DISCLAIMER

Detail sketch is generic, representing suggested best practices for VaproShield materials, and does not represent a specific job site condition and therefore may not be applicable to certain projects. Detail sketch is designed for use as a reference and must be approved by the designer/ consultant of record for each project prior to installation by the subcontractor. Changes and approvals of VaproShield details are the sole responsibility of the designer/consultant of record. VaproShield is **not** the designer of record for building enclosure details and takes no responsibility for the accuracy or interpretation of actual project site conditions.

Always check [www.VaproShield.com](http://www.VaproShield.com) for the latest details and installation instructions

VaproShield LLC  
915 26th Ave. N.W. Suite C5  
Gig Harbor, WA 98335  
Toll Free: 1.866.731.7663  
[www.VaproShield.com](http://www.VaproShield.com)  
© VaproShield 3/15/2016

## Mass Timber Building Sequence



#### PRODUCT DESCRIPTION

SlopeShield Plus Self-Adhered is a highly vapor permeable roofing underlayment Air Barrier (AB) material

WallShield IT Integrated Tape is a primary, water resistive, vapor permeable, air permeable, mechanically attached sheet membrane

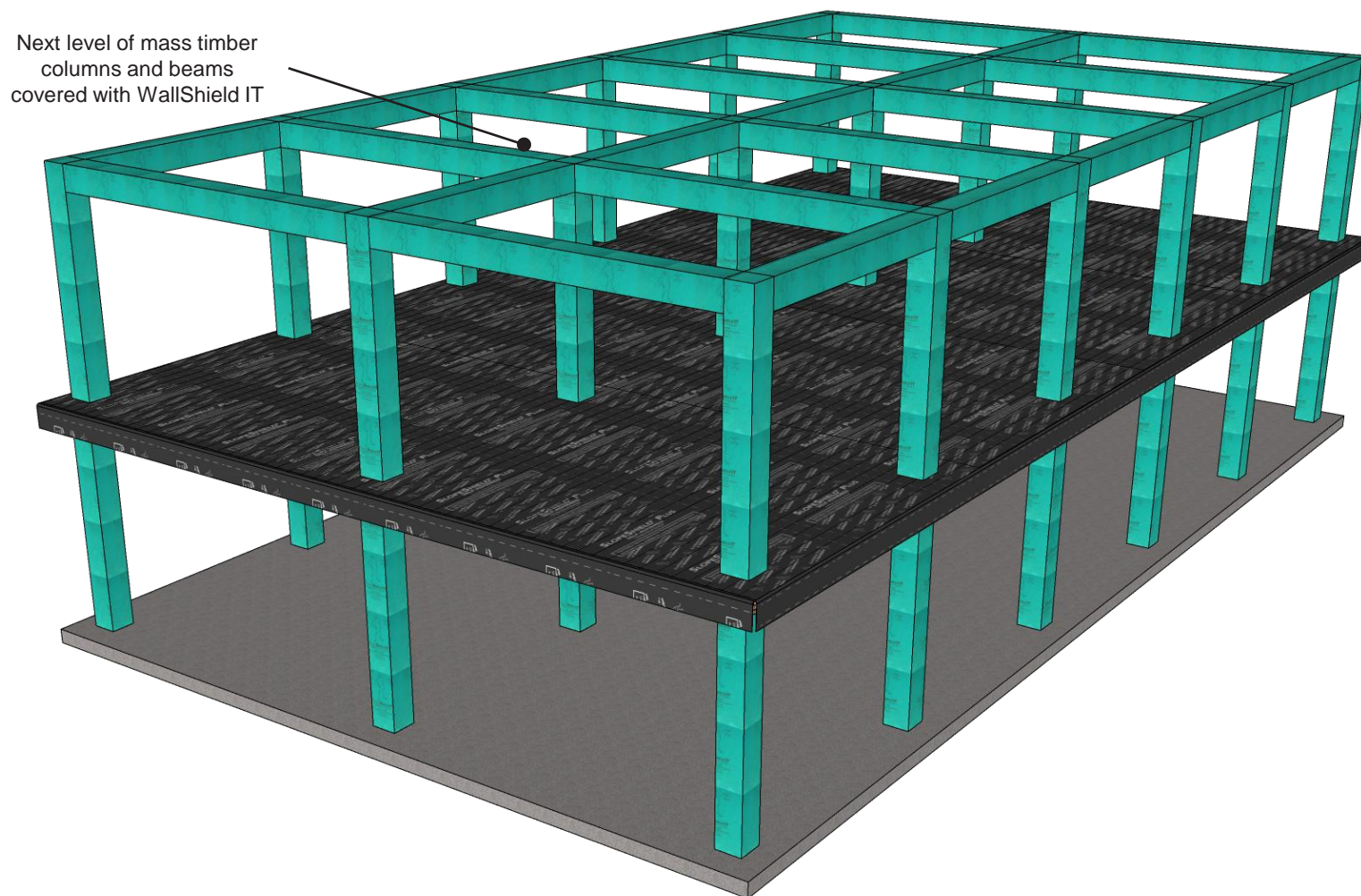
#### DISCLAIMER

Detail sketch is generic, representing suggested best practices for VaproShield materials, and does not represent a specific job site condition and therefore may not be applicable to certain projects. Detail sketch is designed for use as a reference and must be approved by the designer/ consultant of record for each project prior to installation by the subcontractor. Changes and approvals of VaproShield details are the sole responsibility of the designer/consultant of record. VaproShield is **not** the designer of record for building enclosure details and takes no responsibility for the accuracy or interpretation of actual project site conditions.

Always check [www.VaproShield.com](http://www.VaproShield.com) for the latest details and installation instructions

VaproShield LLC  
915 26th Ave. N.W. Suite C5  
Gig Harbor, WA 98335  
Toll Free: 1.866.731.7663  
[www.VaproShield.com](http://www.VaproShield.com)  
© VaproShield 3/15/2016

## Mass Timber Building Sequence





## PRODUCT DESCRIPTION

SlopeShield Plus Self-Adhered is a highly vapor permeable roofing underlayment Air Barrier (AB) material

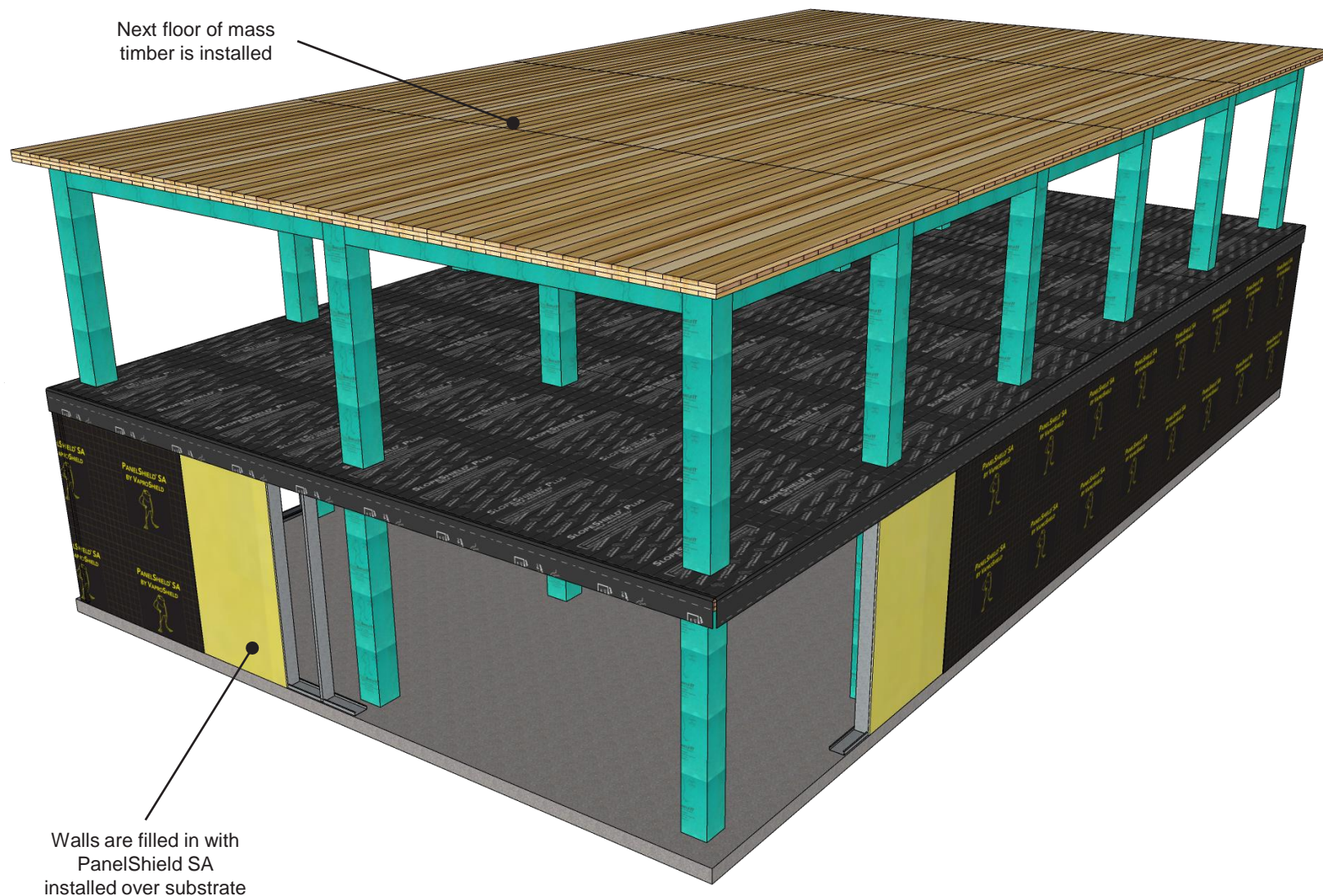
WallShield IT Integrated Tape is a primary, water resistive, vapor permeable, air permeable, mechanically attached sheet membrane

## DISCLAIMER

Detail sketch is generic, representing suggested best practices for VaproShield materials, and does not represent a specific job site condition and therefore may not be applicable to certain projects. Detail sketch is designed for use as a reference and must be approved by the designer/ consultant of record for each project prior to installation by the subcontractor. Changes and approvals of VaproShield details are the sole responsibility of the designer/consultant of record. VaproShield is **not** the designer of record for building enclosure details and takes no responsibility for the accuracy or interpretation of actual project site conditions.

Always check [www.VaproShield.com](http://www.VaproShield.com) for the latest details and installation instructions

VaproShield LLC  
915 26th Ave. N.W. Suite C5  
Gig Harbor, WA 98335  
Toll Free: 1.866.731.7663  
[www.VaproShield.com](http://www.VaproShield.com)  
© VaproShield 3/15/2016



#### PRODUCT DESCRIPTION

SlopeShield Plus Self-Adhered is a highly vapor permeable roofing underlayment Air Barrier (AB) material

WallShield IT Integrated Tape is a primary, water resistive, vapor permeable, air permeable, mechanically attached sheet membrane

#### DISCLAIMER

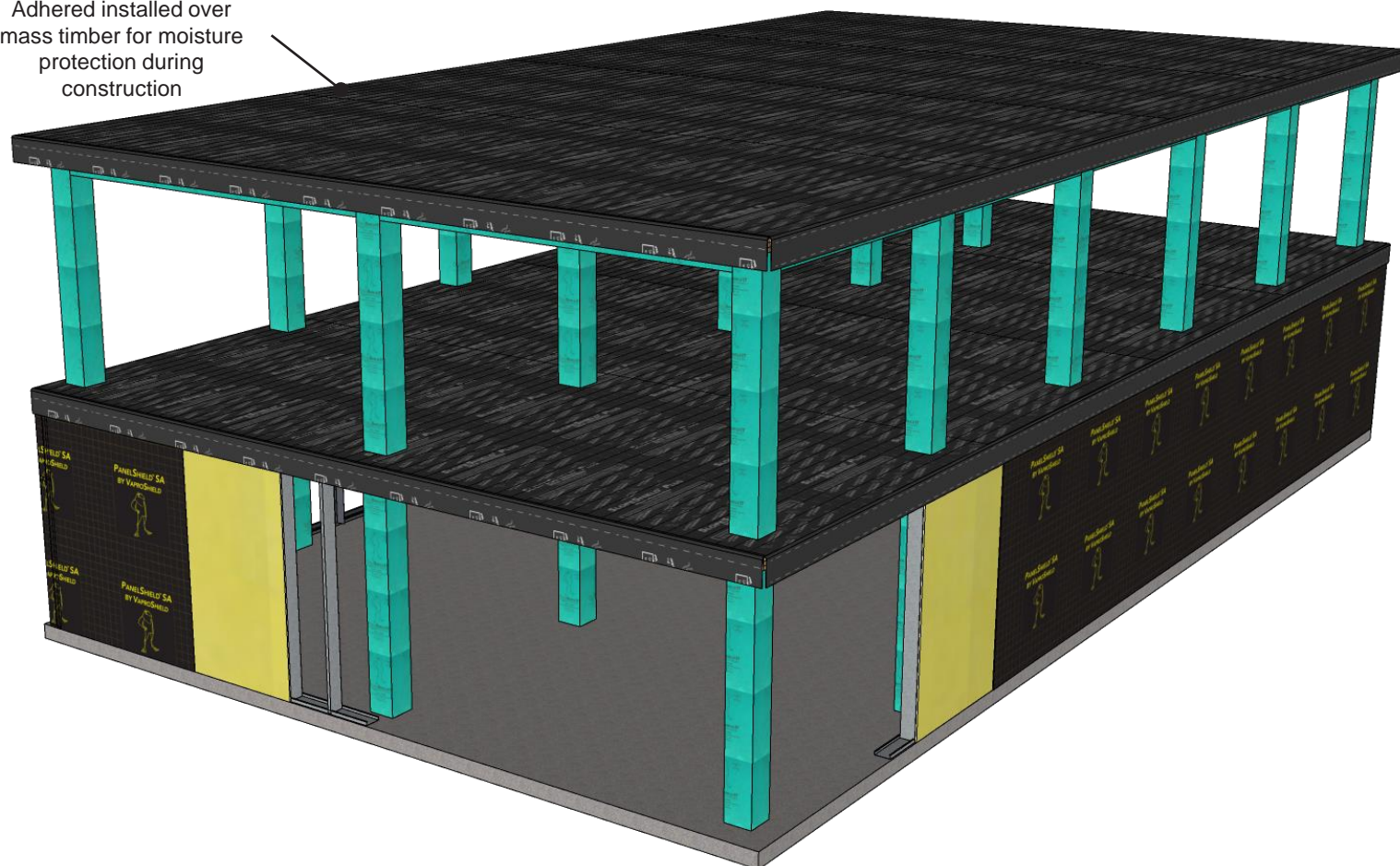
Detail sketch is generic, representing suggested best practices for VaproShield materials, and does not represent a specific job site condition and therefore may not be applicable to certain projects. Detail sketch is designed for use as a reference and must be approved by the designer/ consultant of record for each project prior to installation by the subcontractor. Changes and approvals of VaproShield details are the sole responsibility of the designer/consultant of record. VaproShield is **not** the designer of record for building enclosure details and takes no responsibility for the accuracy or interpretation of actual project site conditions.

Always check [www.VaproShield.com](http://www.VaproShield.com) for the latest details and installation instructions

VaproShield LLC  
915 26th Ave. N.W. Suite C5  
Gig Harbor, WA 98335  
Toll Free: 1.866.731.7663  
[www.VaproShield.com](http://www.VaproShield.com)  
© VaproShield 3/15/2016

## Mass Timber Building Sequence

SlopeShield Plus Self-Adhered installed over mass timber for moisture protection during construction





## PRODUCT DESCRIPTION

SlopeShield Plus Self-Adhered is a highly vapor permeable roofing underlayment Air Barrier (AB) material

WallShield IT Integrated Tape is a primary, water resistive, vapor permeable, air permeable, mechanically attached sheet membrane

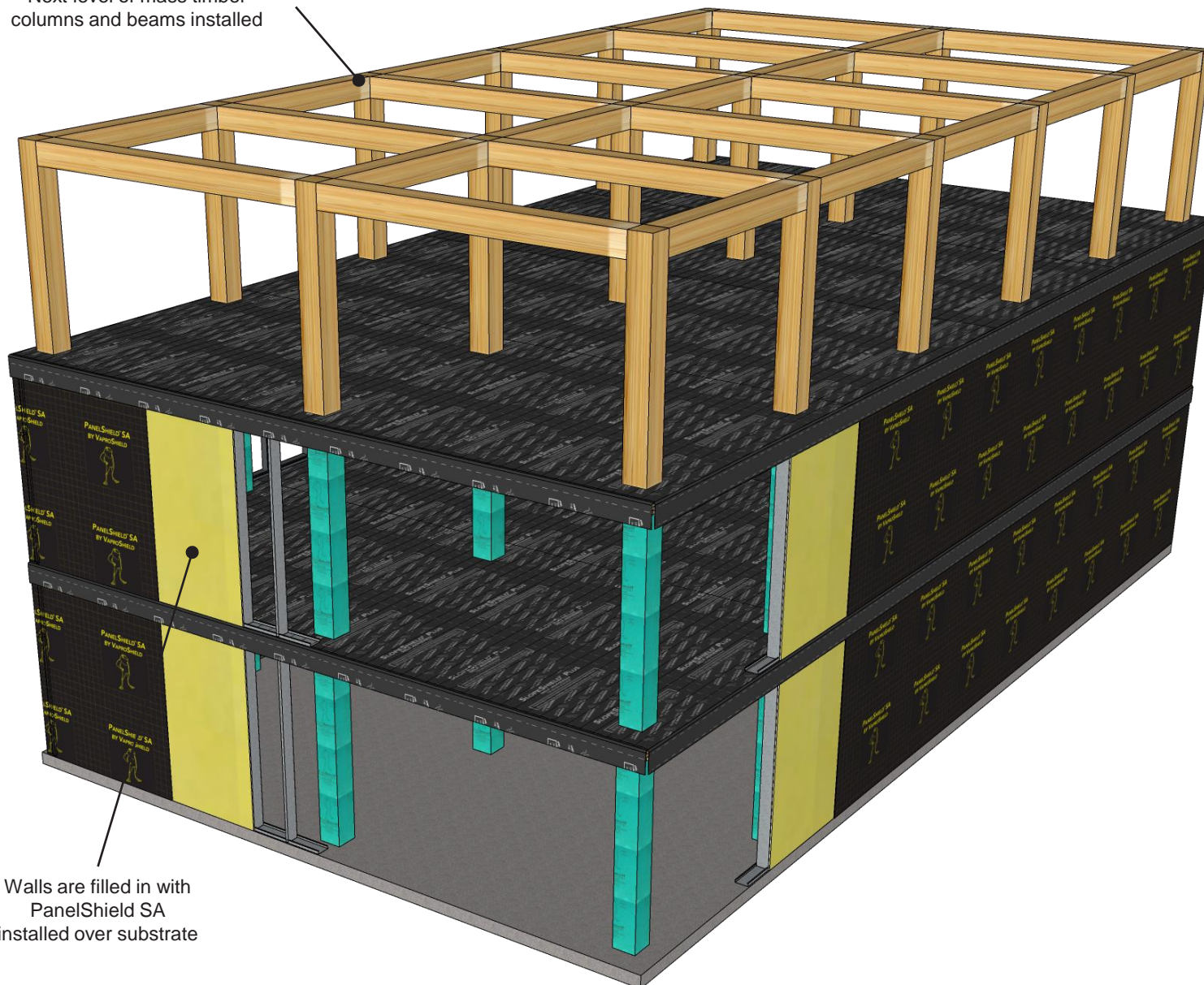
## DISCLAIMER

Detail sketch is generic, representing suggested best practices for VaproShield materials, and does not represent a specific job site condition and therefore may not be applicable to certain projects. Detail sketch is designed for use as a reference and must be approved by the designer/ consultant of record for each project prior to installation by the subcontractor. Changes and approvals of VaproShield details are the sole responsibility of the designer/consultant of record. VaproShield is **not** the designer of record for building enclosure details and takes no responsibility for the accuracy or interpretation of actual project site conditions.

Always check [www.VaproShield.com](http://www.VaproShield.com) for the latest details and installation instructions

VaproShield LLC  
915 26th Ave. N.W. Suite C5  
Gig Harbor, WA 98335  
Toll Free: 1.866.731.7663  
[www.VaproShield.com](http://www.VaproShield.com)  
© VaproShield 3/15/2016

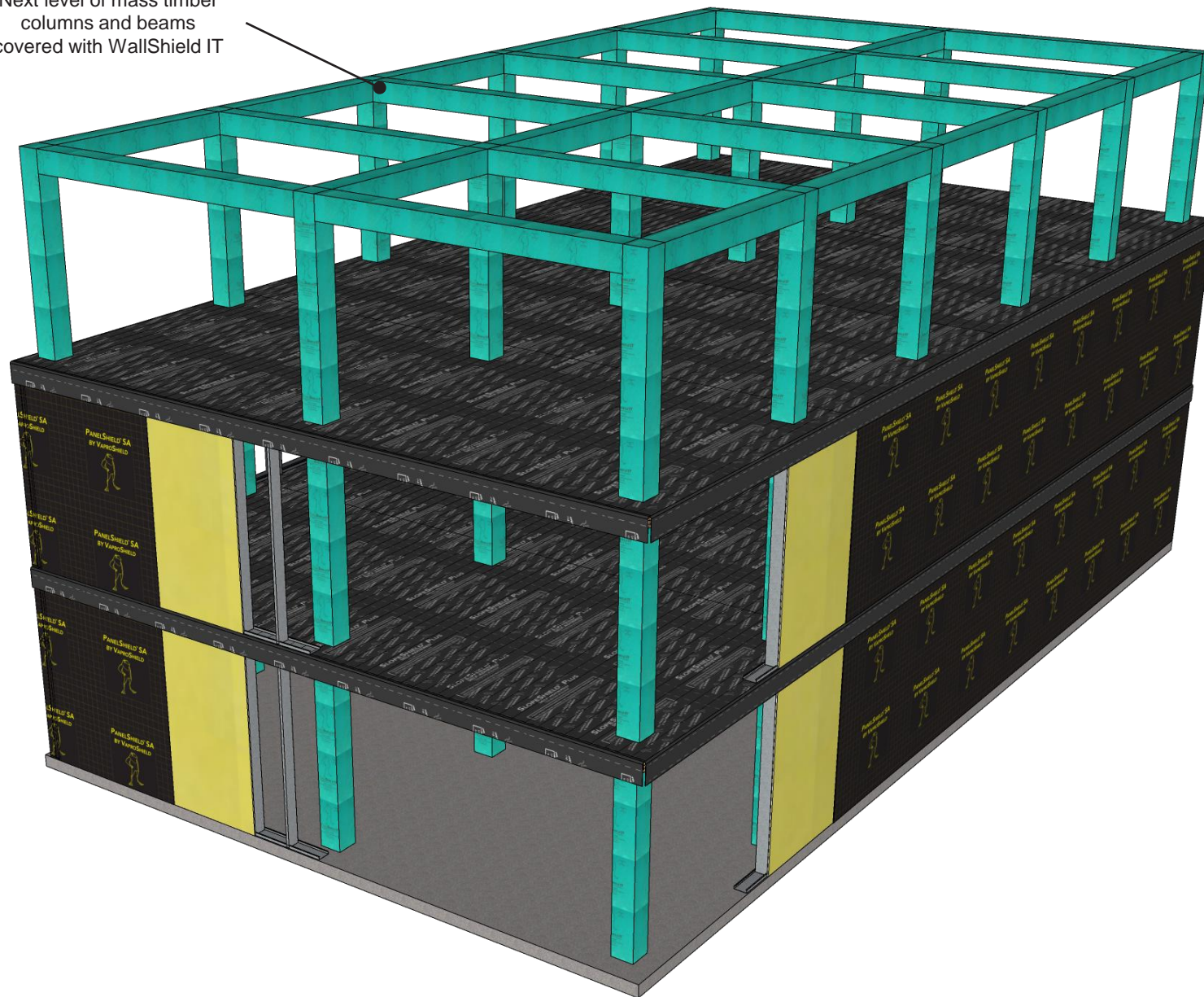
Next level of mass timber columns and beams installed



Walls are filled in with PanelShield SA installed over substrate



Next level of mass timber  
columns and beams  
covered with WallShield IT



## PRODUCT DESCRIPTION

SlopeShield Plus Self-Adhered is a highly vapor permeable roofing underlayment Air Barrier (AB) material

WallShield IT Integrated Tape is a primary, water resistive, vapor permeable, air permeable, mechanically attached sheet membrane

## DISCLAIMER

Detail sketch is generic, representing suggested best practices for VaproShield materials, and does not represent a specific job site condition and therefore may not be applicable to certain projects. Detail sketch is designed for use as a reference and must be approved by the designer/ consultant of record for each project prior to installation by the subcontractor. Changes and approvals of VaproShield details are the sole responsibility of the designer/consultant of record. VaproShield is **not** the designer of record for building enclosure details and takes no responsibility for the accuracy or interpretation of actual project site conditions.

Always check [www.VaproShield.com](http://www.VaproShield.com) for the latest details and installation instructions

VaproShield LLC  
915 26th Ave. N.W. Suite C5  
Gig Harbor, WA 98335  
Toll Free: 1.866.731.7663  
[www.VaproShield.com](http://www.VaproShield.com)  
© VaproShield 3/15/2016



## PRODUCT DESCRIPTION

SlopeShield Plus Self-Adhered is a highly vapor permeable roofing underlayment Air Barrier (AB) material

WallShield IT Integrated Tape is a primary, water resistive, vapor permeable, air permeable, mechanically attached sheet membrane

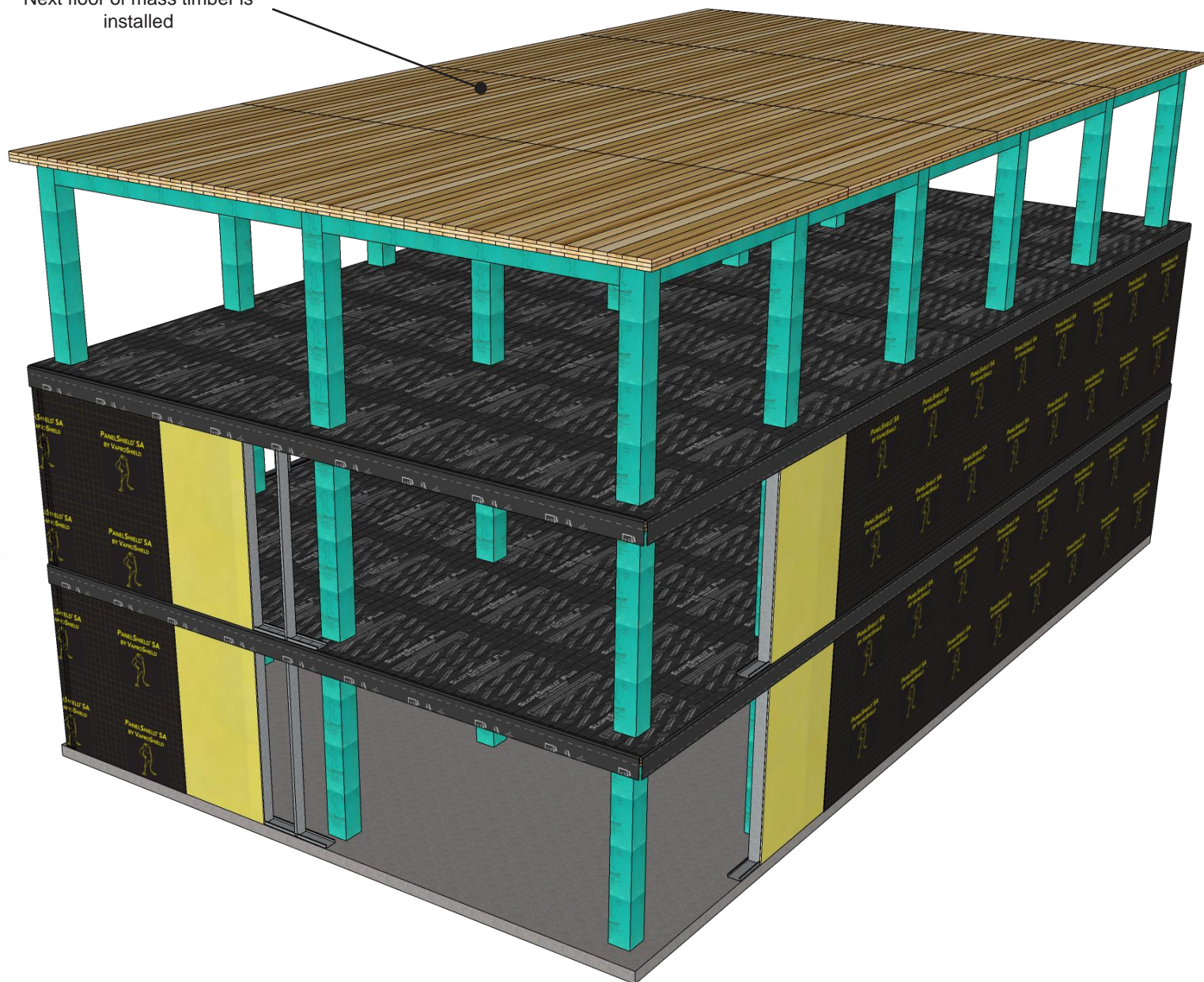
## DISCLAIMER

Detail sketch is generic, representing suggested best practices for VaproShield materials, and does not represent a specific job site condition and therefore may not be applicable to certain projects. Detail sketch is designed for use as a reference and must be approved by the designer/ consultant of record for each project prior to installation by the subcontractor. Changes and approvals of VaproShield details are the sole responsibility of the designer/consultant of record. VaproShield is **not** the designer of record for building enclosure details and takes no responsibility for the accuracy or interpretation of actual project site conditions.

Always check [www.VaproShield.com](http://www.VaproShield.com) for the latest details and installation instructions

VaproShield LLC  
915 26th Ave. N.W. Suite C5  
Gig Harbor, WA 98335  
Toll Free: 1.866.731.7663  
[www.VaproShield.com](http://www.VaproShield.com)  
© VaproShield 3/15/2016

Next floor of mass timber is installed





SlopeShield Plus Self-Adhered installed over mass timber for moisture protection during construction

## PRODUCT DESCRIPTION

SlopeShield Plus Self-Adhered is a highly vapor permeable roofing underlayment Air Barrier (AB) material

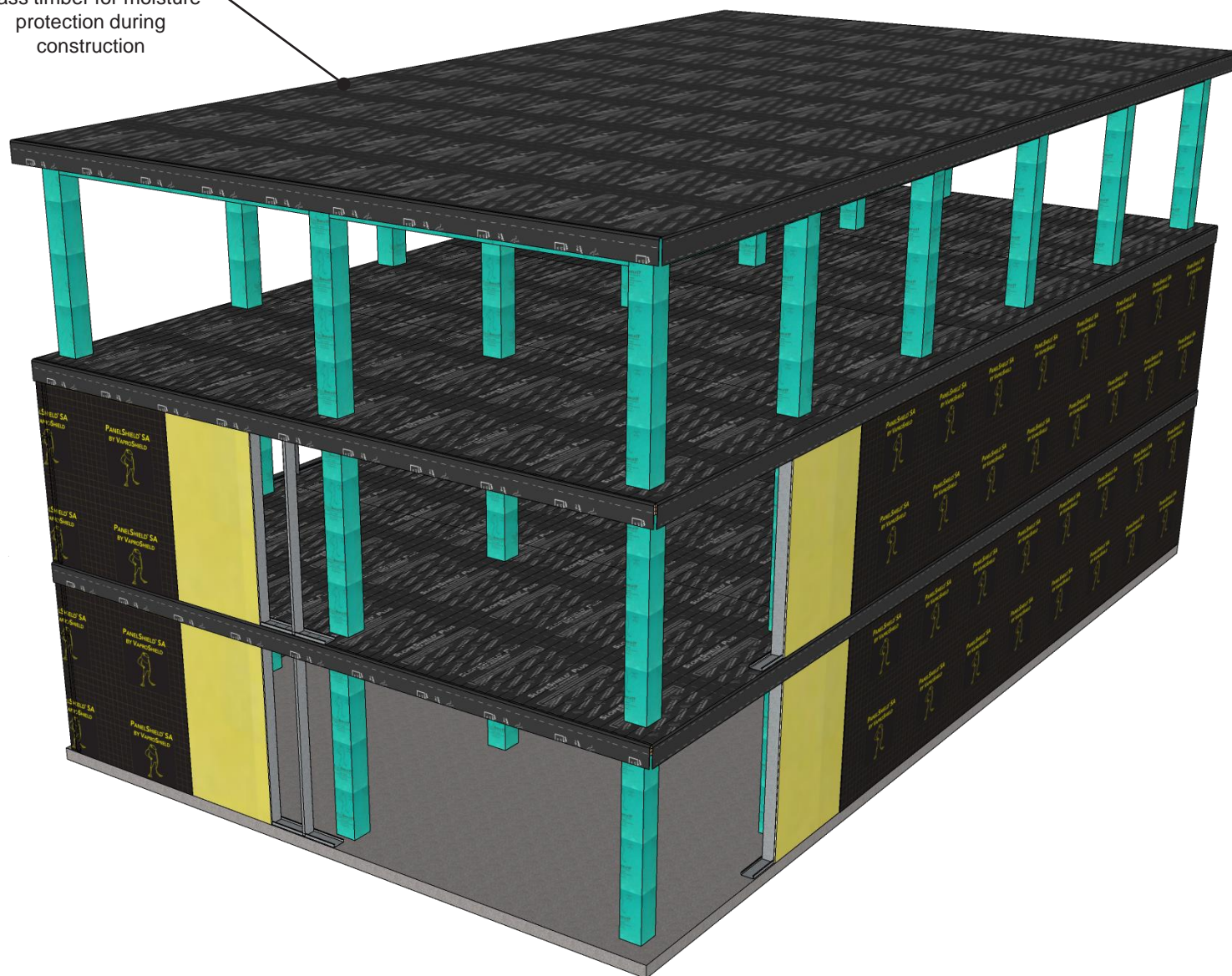
WallShield IT Integrated Tape is a primary, water resistive, vapor permeable, air permeable, mechanically attached sheet membrane

## DISCLAIMER

Detail sketch is generic, representing suggested best practices for VaproShield materials, and does not represent a specific job site condition and therefore may not be applicable to certain projects. Detail sketch is designed for use as a reference and must be approved by the designer/ consultant of record for each project prior to installation by the subcontractor. Changes and approvals of VaproShield details are the sole responsibility of the designer/consultant of record. VaproShield is **not** the designer of record for building enclosure details and takes no responsibility for the accuracy or interpretation of actual project site conditions.

Always check [www.VaproShield.com](http://www.VaproShield.com) for the latest details and installation instructions

VaproShield LLC  
915 26th Ave. N.W. Suite C5  
Gig Harbor, WA 98335  
Toll Free: 1.866.731.7663  
[www.VaproShield.com](http://www.VaproShield.com)  
© VaproShield 3/15/2016





Walls are filled in with  
PanelShield SA  
installed over substrate

## PRODUCT DESCRIPTION

SlopeShield Plus Self-Adhered is a highly vapor permeable roofing underlayment Air Barrier (AB) material

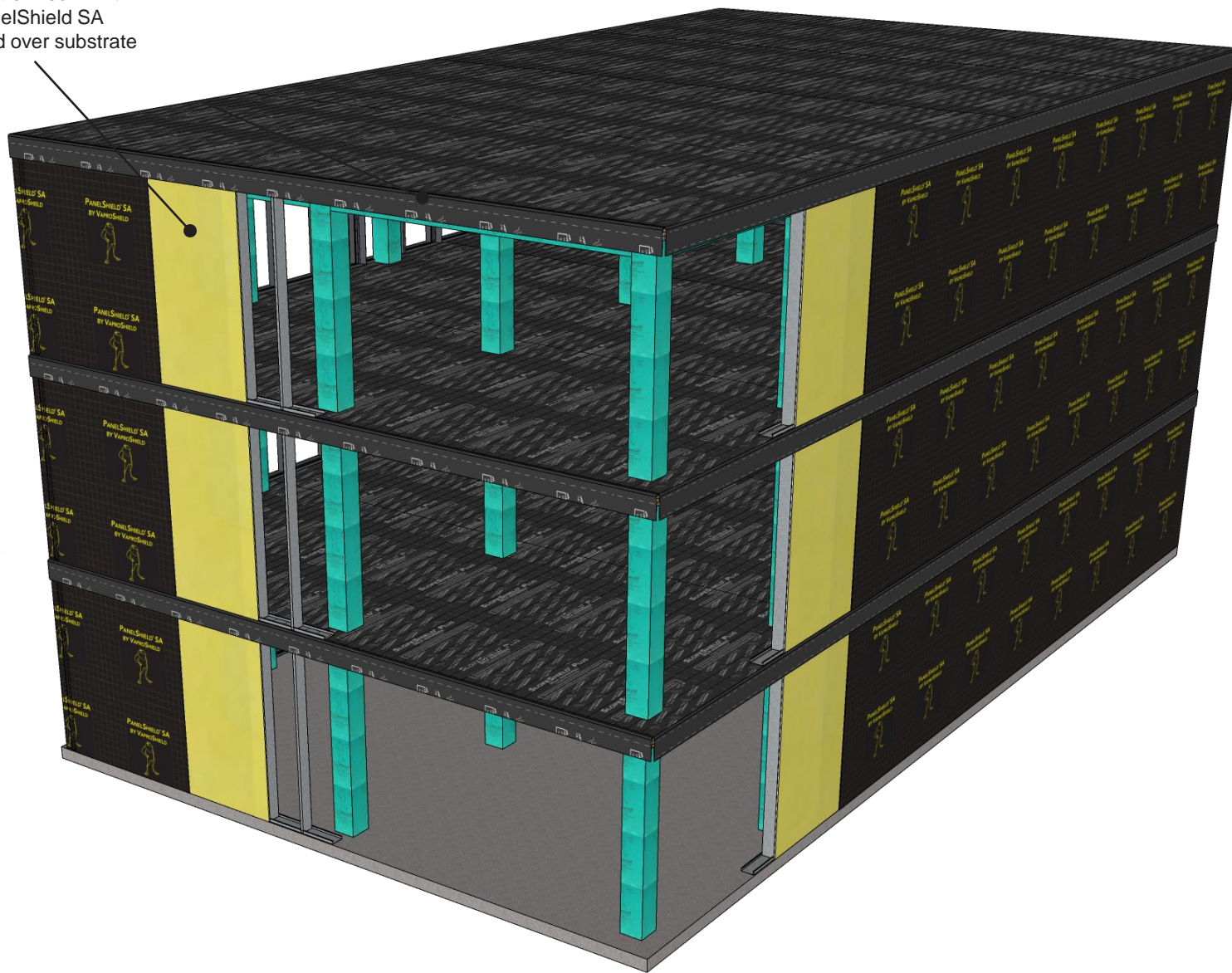
WallShield IT Integrated Tape is a primary, water resistive, vapor permeable, air permeable, mechanically attached sheet membrane

## DISCLAIMER

Detail sketch is generic, representing suggested best practices for VaproShield materials, and does not represent a specific job site condition and therefore may not be applicable to certain projects. Detail sketch is designed for use as a reference and must be approved by the designer/ consultant of record for each project prior to installation by the subcontractor. Changes and approvals of VaproShield details are the sole responsibility of the designer/consultant of record. VaproShield is **not** the designer of record for building enclosure details and takes no responsibility for the accuracy or interpretation of actual project site conditions.

Always check [www.VaproShield.com](http://www.VaproShield.com) for the latest details and installation instructions

VaproShield LLC  
915 26th Ave. N.W. Suite C5  
Gig Harbor, WA 98335  
Toll Free: 1.866.731.7663  
[www.VaproShield.com](http://www.VaproShield.com)  
© VaproShield 3/15/2016



#### PRODUCT DESCRIPTION

SlopeShield Plus Self-Adhered is a highly vapor permeable roofing underlayment Air Barrier (AB) material

WallShield IT Integrated Tape is a primary, water resistive, vapor permeable, air permeable, mechanically attached sheet membrane

#### DISCLAIMER

Detail sketch is generic, representing suggested best practices for VaproShield materials, and does not represent a specific job site condition and therefore may not be applicable to certain projects. Detail sketch is designed for use as a reference and must be approved by the designer/ consultant of record for each project prior to installation by the subcontractor. Changes and approvals of VaproShield details are the sole responsibility of the designer/consultant of record. VaproShield is **not** the designer of record for building enclosure details and takes no responsibility for the accuracy or interpretation of actual project site conditions.

Always check [www.VaproShield.com](http://www.VaproShield.com) for the latest details and installation instructions

VaproShield LLC  
915 26th Ave. N.W. Suite C5  
Gig Harbor, WA 98335  
Toll Free: 1.866.731.7663  
[www.VaproShield.com](http://www.VaproShield.com)  
© VaproShield 3/15/2016

