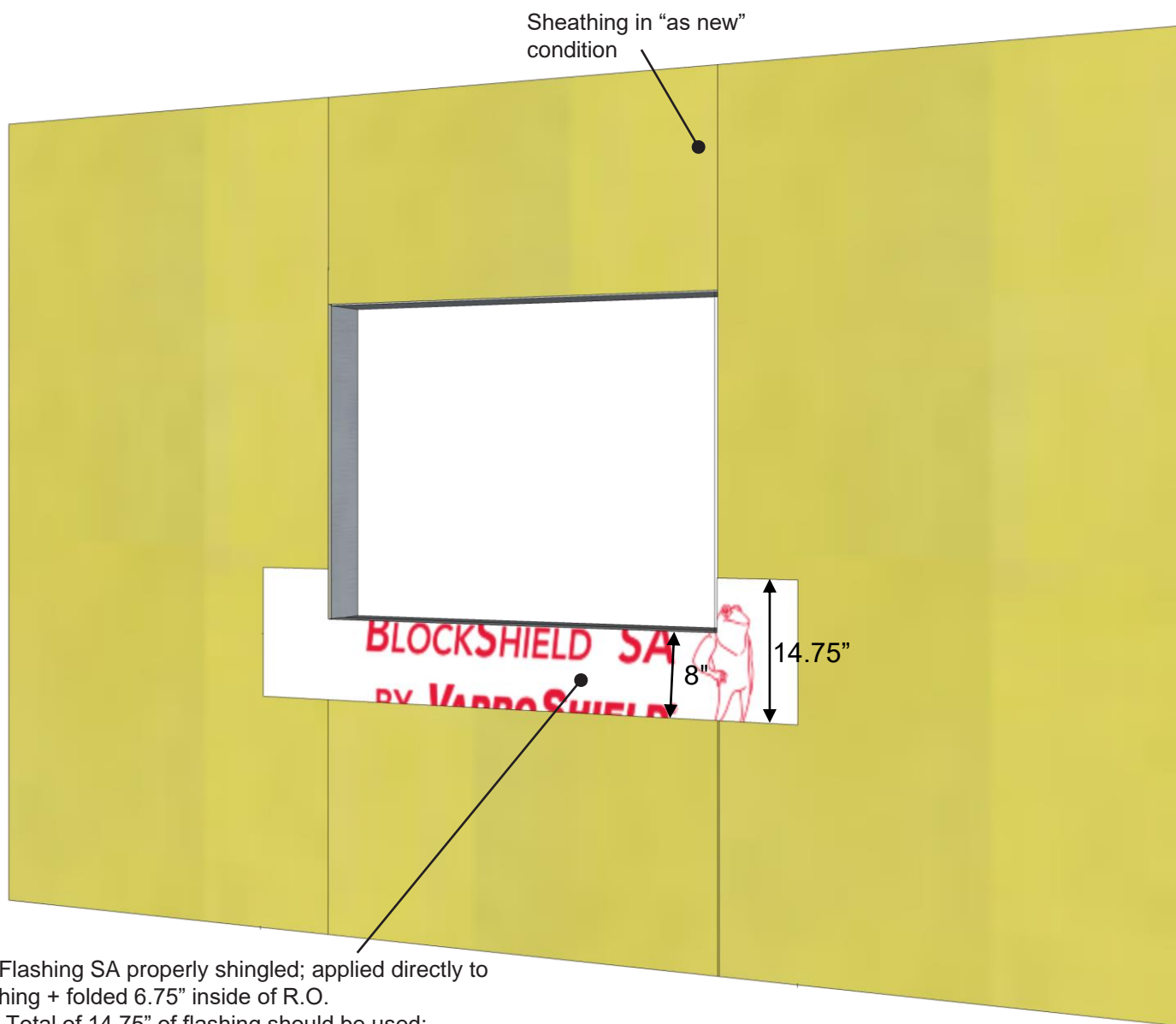


Step 1: BlockFlashing SA Rough Opening Flashing Sequence



BlockFlashing SA properly shingled; applied directly to sheathing + folded 6.75" inside of R.O.

Note: Total of 14.75" of flashing should be used:

- 8" of flashing should be left on the face of the sheathing
- 6" of release film from the bottom of the flashing to be left attached for shingling over membrane.

Step 1: Install BlockFlashing SA into sill with 6.75" folded into R.O. 8" left on face, with bottom 6" of release film to remain attached.

PRODUCT DESCRIPTION

BlockShield SA is a Lightweight, Self-Adhered Air, Water, and Vapor Barrier Membrane

DISCLAIMER

Detail sketch is generic, representing suggested best practices for VaproShield materials, and does not represent a specific job site condition and therefore may not be applicable to certain projects. Detail sketch is designed for use as a reference and must be approved by the designer/ consultant of record for each project prior to installation by the subcontractor. Changes and approvals of VaproShield details are the sole responsibility of the designer/consultant of record. VaproShield is **not** the designer of record for building enclosure details and takes no responsibility for the accuracy or interpretation of actual project site conditions.

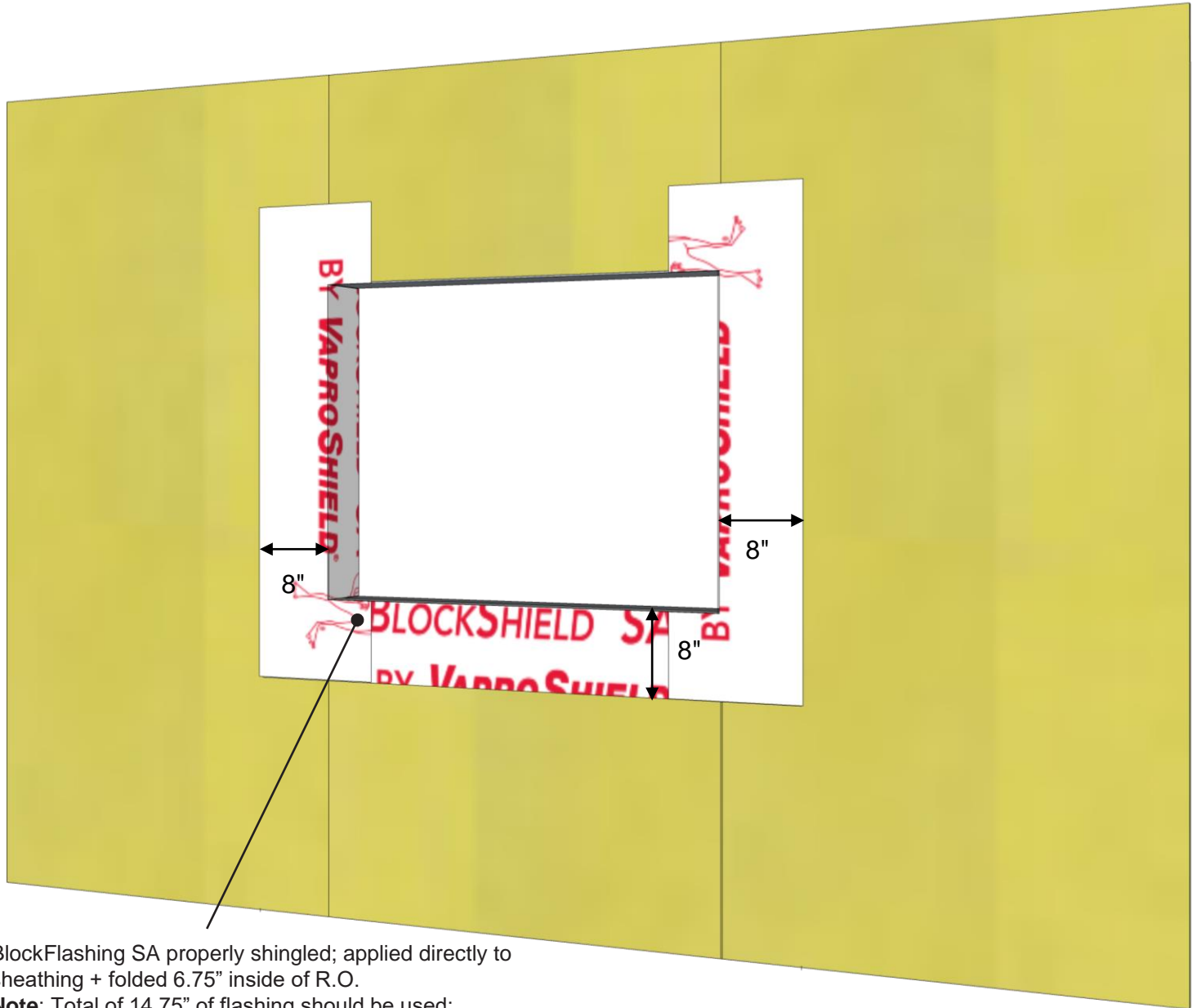
DRAWN BY: AR

DATE: 10/1/21

REF: 273-1

Always check www.VaproShield.com for the latest details and installation instructions

Step 2: BlockFlashing SA Rough Opening Flashing Sequence



BlockFlashing SA properly shingled; applied directly to sheathing + folded 6.75" inside of R.O.

Note: Total of 14.75" of flashing should be used:

- 8" of flashing should be left on the face of the sheathing
- 6" of release film from the bottom of the flashing to be left attached for shingling over membrane.

Step 2: Install jamb pieces with 6.75" folded into R.O. 8" to be left on face.

PRODUCT DESCRIPTION

BlockShield SA is a Lightweight, Self-Adhered Air, Water, and Vapor Barrier Membrane

DISCLAIMER

Detail sketch is generic, representing suggested best practices for VaproShield materials, and does not represent a specific job site condition and therefore may not be applicable to certain projects. Detail sketch is designed for use as a reference and must be approved by the designer/ consultant of record for each project prior to installation by the subcontractor. Changes and approvals of VaproShield details are the sole responsibility of the designer/consultant of record. VaproShield is **not** the designer of record for building enclosure details and takes no responsibility for the accuracy or interpretation of actual project site conditions.

DRAWN BY: AR

DATE: 10/1/21

REF: 273-2

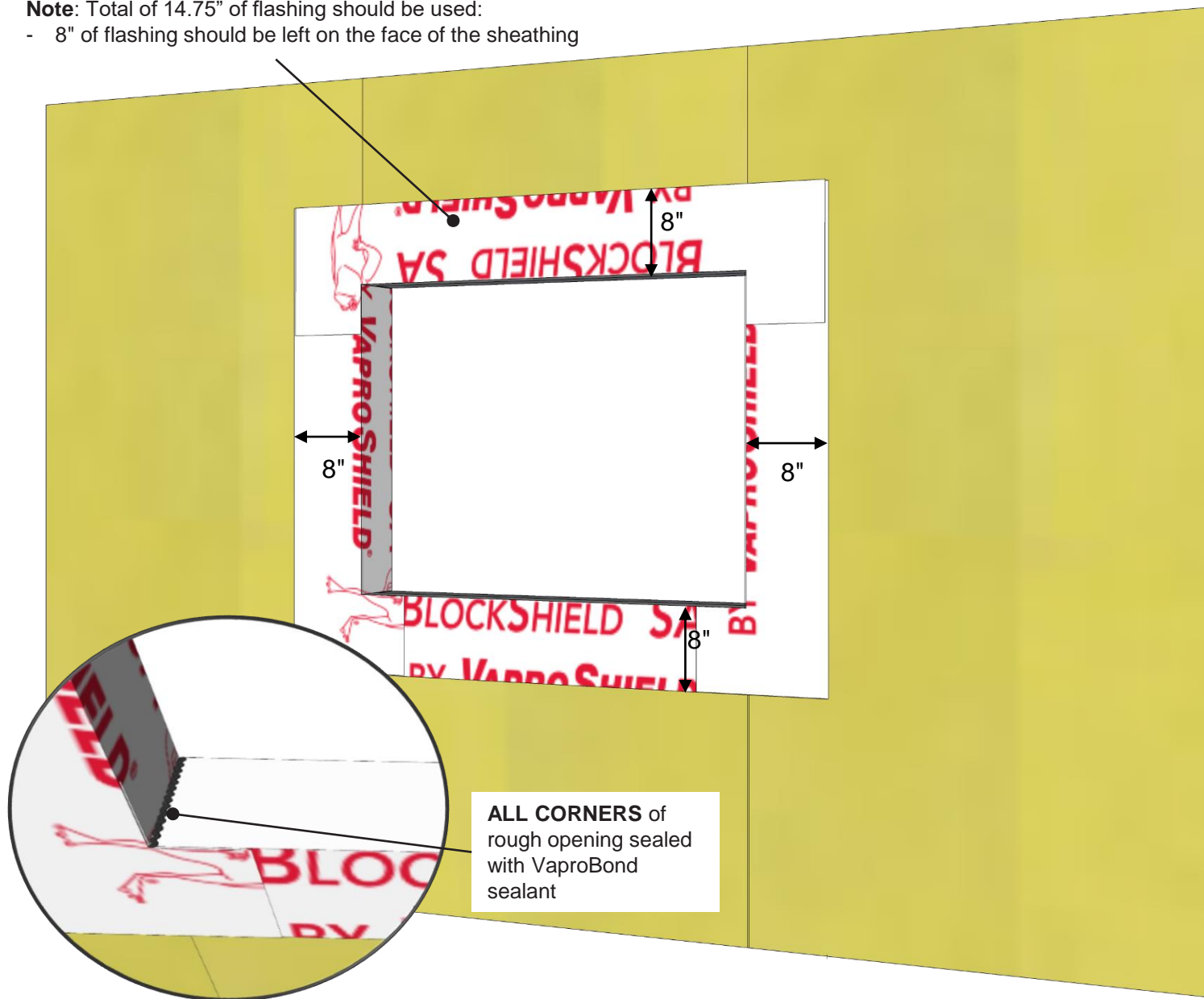
Always check www.VaproShield.com for the latest details and installation instructions

Step 3: BlockFlashing SA Rough Opening Flashing Sequence

BlockFlashing SA properly shingled; applied directly to sheathing + folded 6.75" inside of R.O.

Note: Total of 14.75" of flashing should be used:

- 8" of flashing should be left on the face of the sheathing



Step 3: Install head piece with 6.75" folded into R.O. 8" to be left on face.

PRODUCT DESCRIPTION

BlockShield SA is a Lightweight, Self-Adhered Air, Water, and Vapor Barrier Membrane

DISCLAIMER

Detail sketch is generic, representing suggested best practices for VaproShield materials, and does not represent a specific job site condition and therefore may not be applicable to certain projects. Detail sketch is designed for use as a reference and must be approved by the designer/ consultant of record for each project prior to installation by the subcontractor. Changes and approvals of VaproShield details are the sole responsibility of the designer/consultant of record. VaproShield is **not** the designer of record for building enclosure details and takes no responsibility for the accuracy or interpretation of actual project site conditions.

DRAWN BY: AR

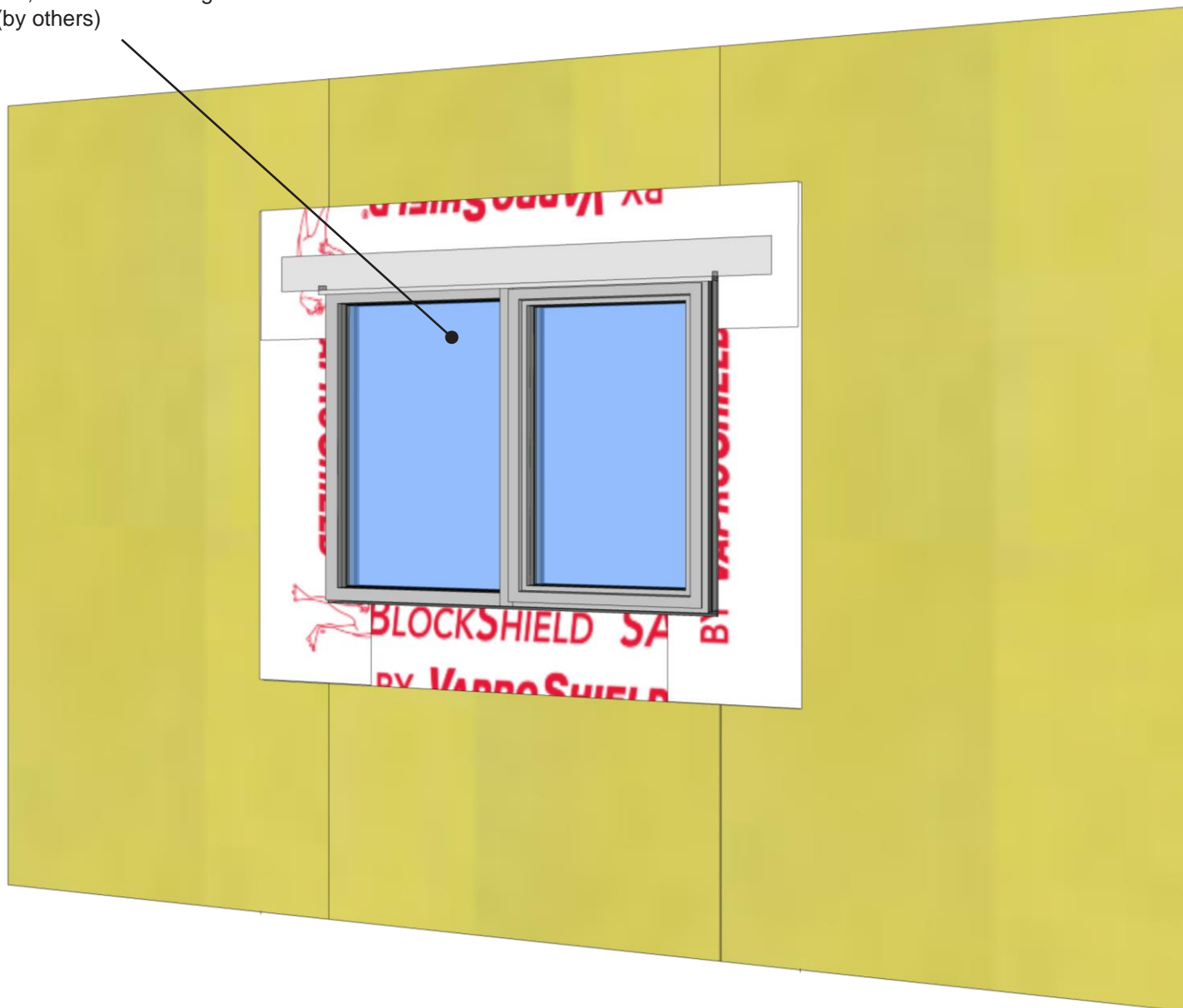
DATE: 10/1/21

REF: 273-3

Always check www.VaproShield.com for the latest details and installation instructions

Step 4: BlockFlashing SA Rough Opening Flashing Sequence

Commercial Window w/
sealant joint, backer
rod, and head flashing
(by others)



Step 4: Install commercial window w/ perimeter sealant joint and backer rod (by others). Install metal head flashing (by others) over cured VaproBond

PRODUCT DESCRIPTION

BlockShield SA is a Lightweight, Self-Adhered Air, Water, and Vapor Barrier Membrane

DISCLAIMER

Detail sketch is generic, representing suggested best practices for VaproShield materials, and does not represent a specific job site condition and therefore may not be applicable to certain projects. Detail sketch is designed for use as a reference and must be approved by the designer/ consultant of record for each project prior to installation by the subcontractor. Changes and approvals of VaproShield details are the sole responsibility of the designer/consultant of record. VaproShield is **not** the designer of record for building enclosure details and takes no responsibility for the accuracy or interpretation of actual project site conditions.

DRAWN BY: AR

DATE: 10/1/21

REF: 273-4

Always check www.VaproShield.com for the latest details and installation instructions

Step 5: BlockFlashing SA Rough Opening Flashing Sequence



Step 5: Install field membrane,
shingled underneath window
flashing

PRODUCT DESCRIPTION

BlockShield SA is a Lightweight,
Self-Adhered Air, Water, and
Vapor Barrier Membrane

DISCLAIMER

Detail sketch is generic, representing suggested best practices for VaproShield materials, and does not represent a specific job site condition and therefore may not be applicable to certain projects. Detail sketch is designed for use as a reference and must be approved by the designer/ consultant of record for each project prior to installation by the subcontractor. Changes and approvals of VaproShield details are the sole responsibility of the designer/consultant of record. VaproShield is **not** the designer of record for building enclosure details and takes no responsibility for the accuracy or interpretation of actual project site conditions.

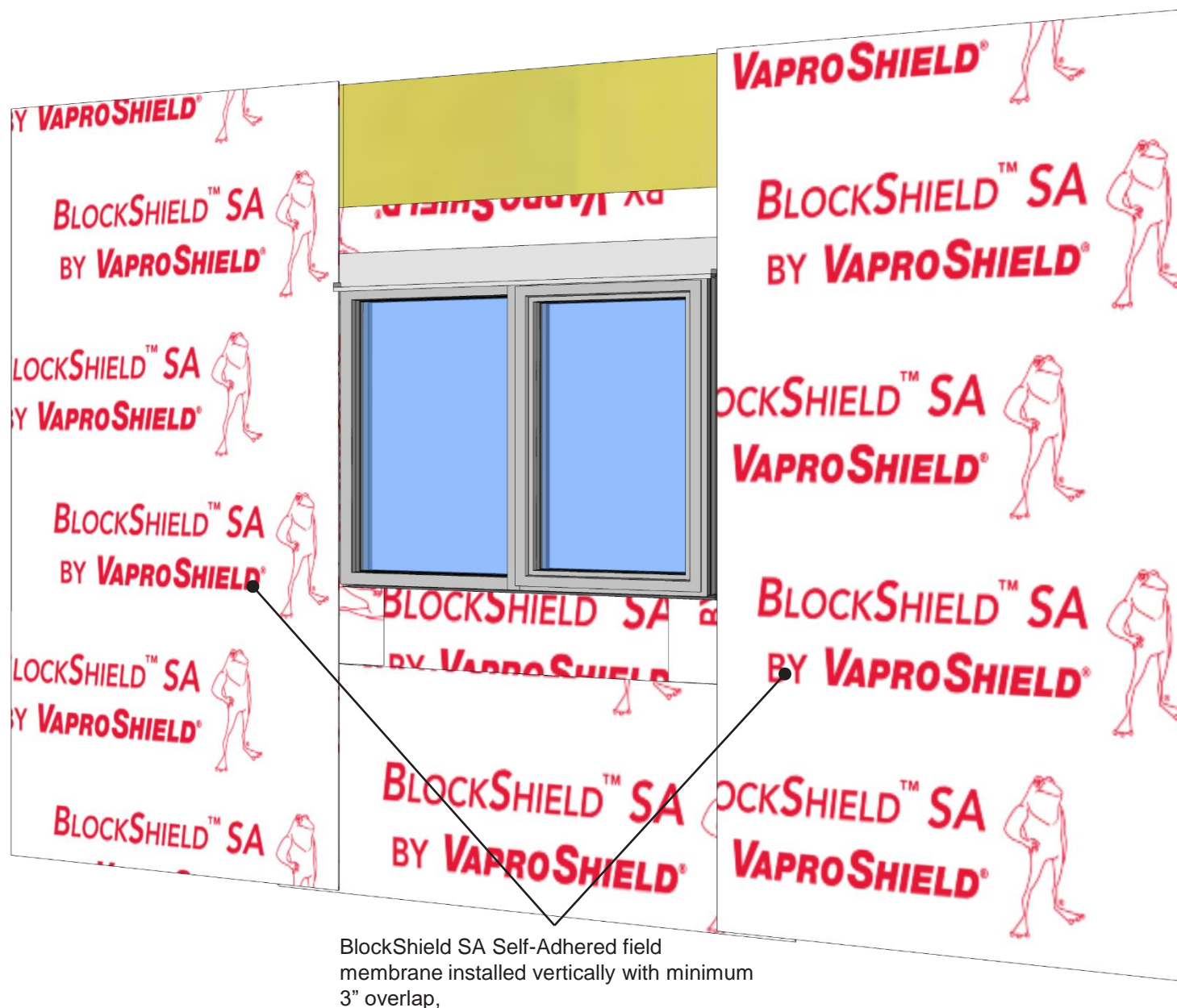
DRAWN BY: AR

DATE: 10/1/21

REF: 273-5

Always check www.VaproShield.com for the latest details and installation instructions

Step 6: BlockFlashing SA Rough Opening Flashing Sequence



Step 6: Install field membrane vertically to sheathing, maintaining 3" minimum overlap with R.O. flashing

PRODUCT DESCRIPTION

BlockShield SA is a Lightweight, Self-Adhered Air, Water, and Vapor Barrier Membrane

DISCLAIMER

Detail sketch is generic, representing suggested best practices for VaproShield materials, and does not represent a specific job site condition and therefore may not be applicable to certain projects. Detail sketch is designed for use as a reference and must be approved by the designer/ consultant of record for each project prior to installation by the subcontractor. Changes and approvals of VaproShield details are the sole responsibility of the designer/consultant of record. VaproShield is **not** the designer of record for building enclosure details and takes no responsibility for the accuracy or interpretation of actual project site conditions.

DRAWN BY: AR

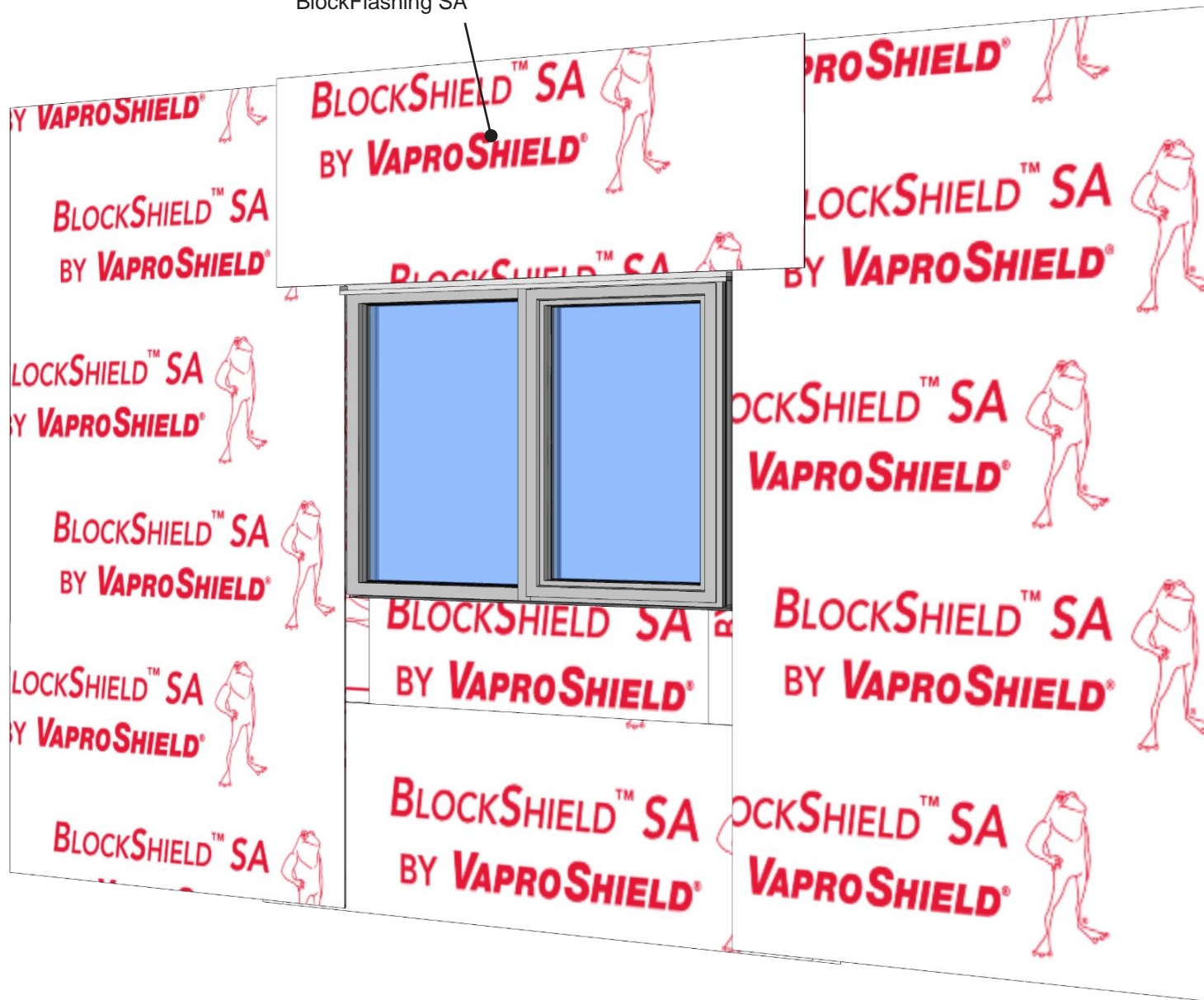
DATE: 10/1/21

REF: 273-6

Always check www.VaproShield.com for the latest details and installation instructions

Step 7: BlockFlashing SA Rough Opening Flashing Sequence

BlockShield SA Self-Adhered
installed over head flashing and
BlockFlashing SA



Step 7: Install field membrane over metal head flashing, maintaining 3" minimum overlap to adjacent field membrane.

PRODUCT DESCRIPTION

BlockShield SA is a Lightweight, Self-Adhered Air, Water, and Vapor Barrier Membrane

DISCLAIMER

Detail sketch is generic, representing suggested best practices for VaproShield materials, and does not represent a specific job site condition and therefore may not be applicable to certain projects. Detail sketch is designed for use as a reference and must be approved by the designer/ consultant of record for each project prior to installation by the subcontractor. Changes and approvals of VaproShield details are the sole responsibility of the designer/consultant of record. VaproShield is **not** the designer of record for building enclosure details and takes no responsibility for the accuracy or interpretation of actual project site conditions.

DRAWN BY: AR

DATE: 10/1/21

REF: 273-7

Always check www.VaproShield.com for the latest details and installation instructions