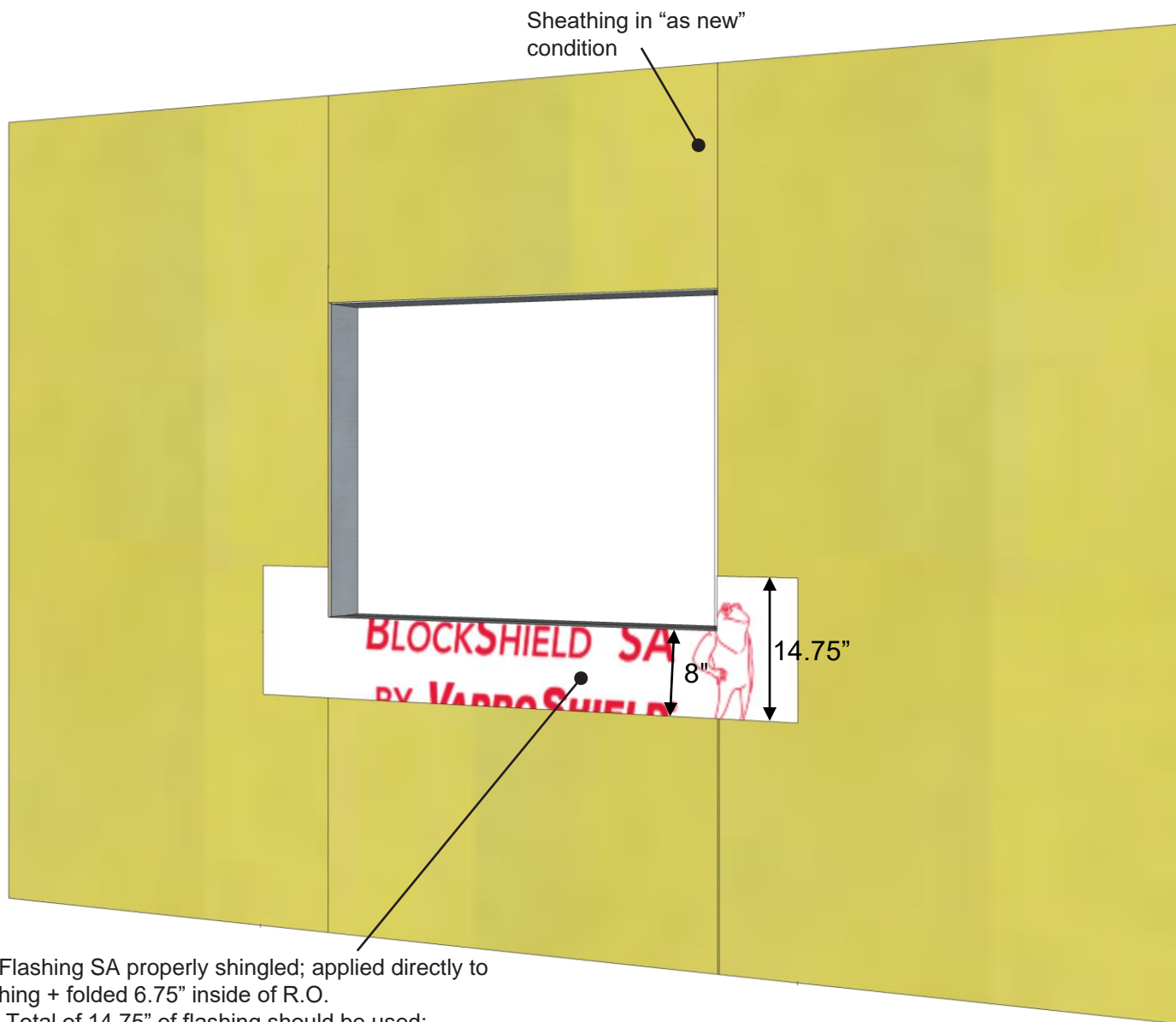


Step 1: BlockFlashing SA Rough Opening Flashing Sequence



BlockFlashing SA properly shingled; applied directly to sheathing + folded 6.75" inside of R.O.

Note: Total of 14.75" of flashing should be used:

- 8" of flashing should be left on the face of the sheathing
- 6" of release film from the bottom of the flashing to be left attached for shingling over membrane.

BlockFlashing SA is designed for locations where vapor permeability is not required. Steel framing with Densglass sheathing shown above.

PRODUCT DESCRIPTION

BlockShield SA is an air, water and vapor barrier membrane with an aggressive pressure-sensitive adhesive that does not require a primer and is easily applied to most construction substrates.

DISCLAIMER

Detail sketch is generic, representing suggested best practices for VaproShield materials, and does not represent a specific job site condition and therefore may not be applicable to certain projects. Detail sketch is designed for use as a reference and must be approved by the designer/ consultant of record for each project prior to installation by the subcontractor. Changes and approvals of VaproShield details are the sole responsibility of the designer/consultant of record. VaproShield is **not** the designer of record for building enclosure details and takes no responsibility for the accuracy or interpretation of actual project site conditions.

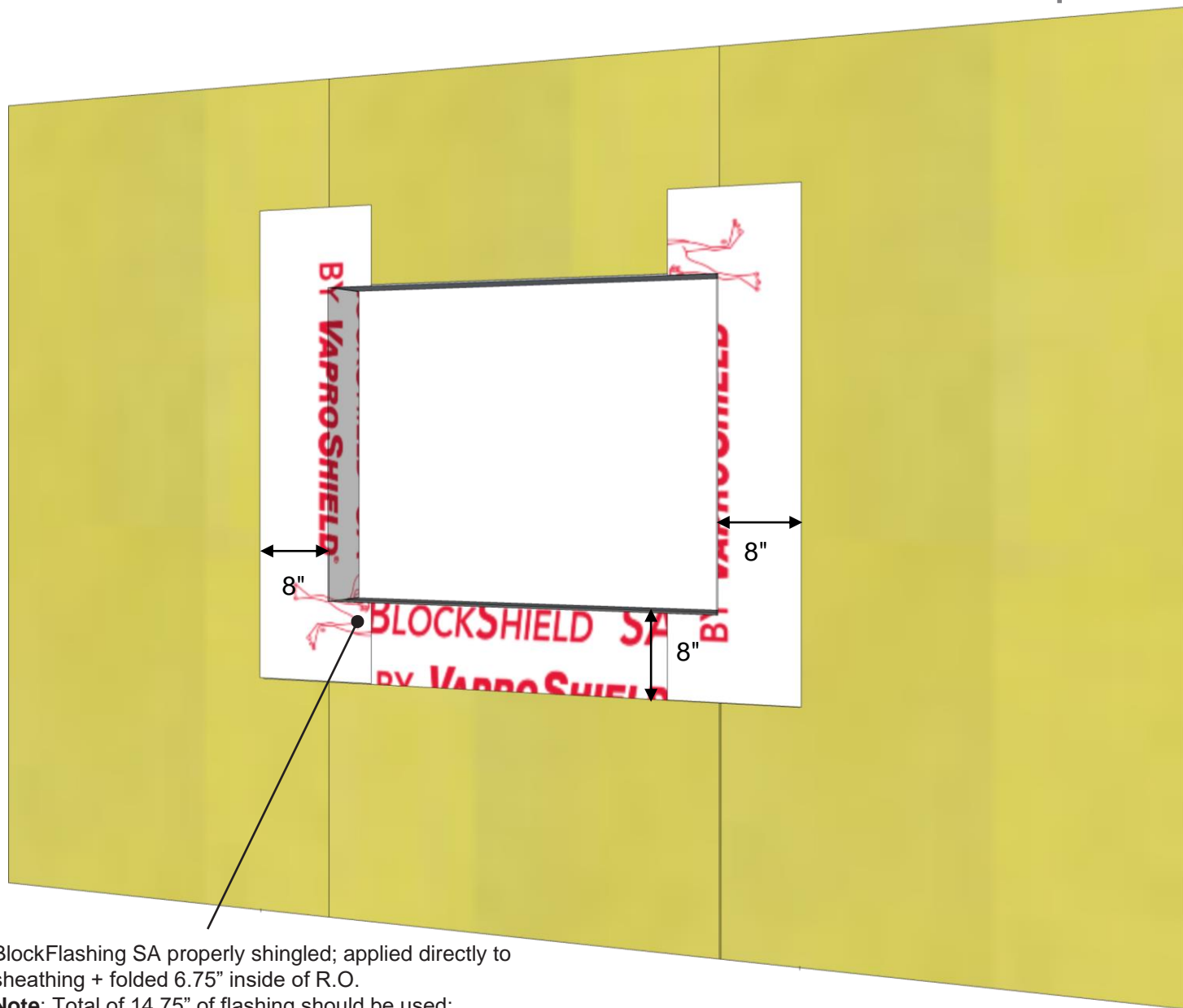
DRAWN BY: AR

DATE: 10/1/21

REF: 262-1

Always check www.VaproShield.com for the latest details and installation instructions

Step 2: BlockFlashing SA Rough Opening Flashing Sequence



BlockFlashing SA properly shingled; applied directly to sheathing + folded 6.75" inside of R.O.

Note: Total of 14.75" of flashing should be used:

- 8" of flashing should be left on the face of the sheathing
- 6" of release film from the bottom of the flashing to be left attached for shingling over membrane.

BlockFlashing SA is designed for locations where vapor permeability is not required. Steel framing with Densglass sheathing shown above.

PRODUCT DESCRIPTION

BlockShield SA is an air, water and vapor barrier membrane with an aggressive pressure-sensitive adhesive that does not require a primer and is easily applied to most construction substrates.

DISCLAIMER

Detail sketch is generic, representing suggested best practices for VaproShield materials, and does not represent a specific job site condition and therefore may not be applicable to certain projects. Detail sketch is designed for use as a reference and must be approved by the designer/ consultant of record for each project prior to installation by the subcontractor. Changes and approvals of VaproShield details are the sole responsibility of the designer/consultant of record. VaproShield is **not** the designer of record for building enclosure details and takes no responsibility for the accuracy or interpretation of actual project site conditions.

DRAWN BY: AR

DATE: 10/1/21

REF: 262-2

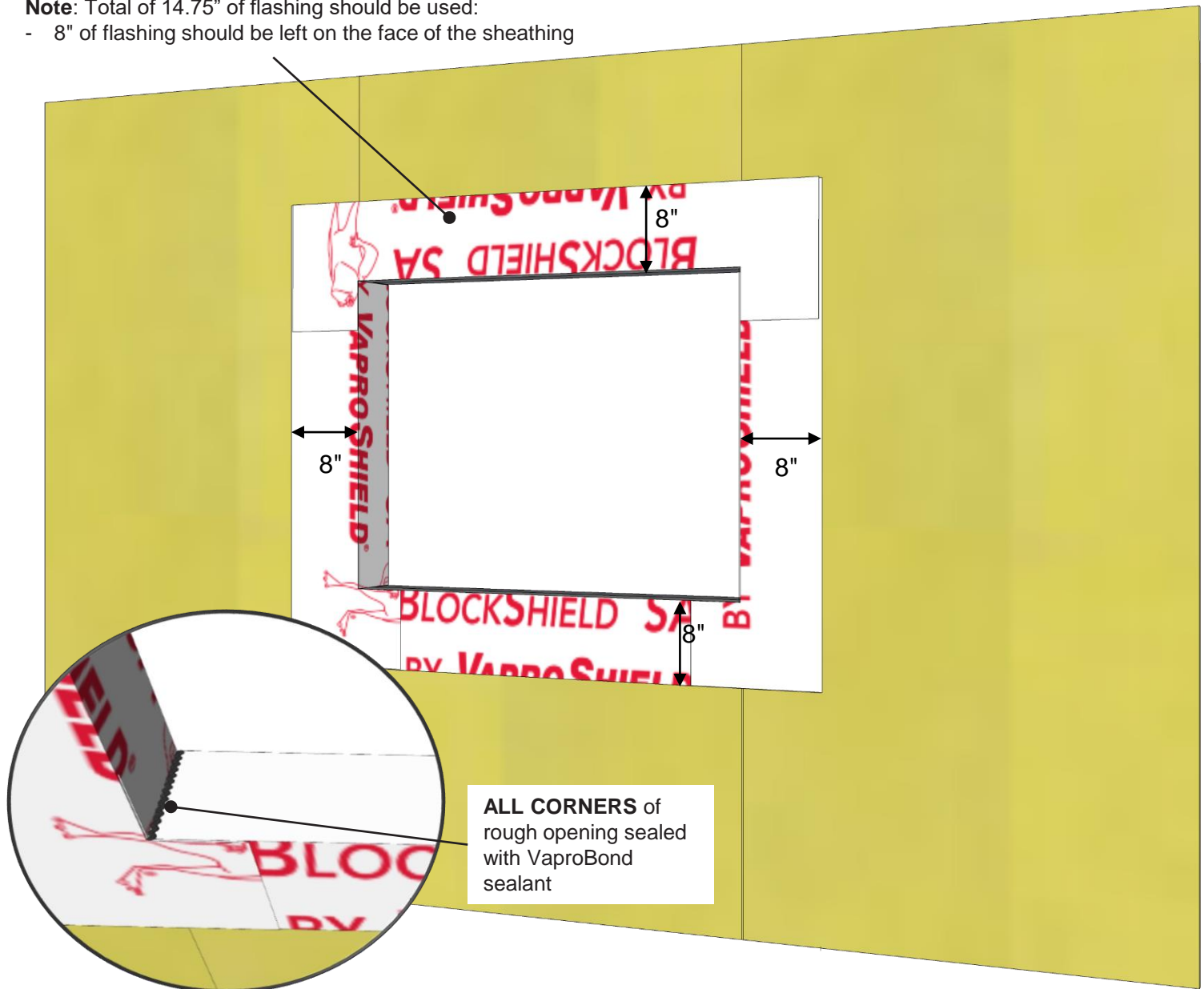
Always check www.VaproShield.com for the latest details and installation instructions

Step 3: BlockFlashing SA Rough Opening Flashing Sequence

BlockFlashing SA properly shingled; applied directly to sheathing + folded 6.75" inside of R.O.

Note: Total of 14.75" of flashing should be used:

- 8" of flashing should be left on the face of the sheathing



BlockFlashing SA is designed for locations where vapor permeability is not required. Steel framing with Densglass sheathing shown above.

PRODUCT DESCRIPTION

BlockShield SA is an air, water and vapor barrier membrane with an aggressive pressure-sensitive adhesive that does not require a primer and is easily applied to most construction substrates.

DISCLAIMER

Detail sketch is generic, representing suggested best practices for VaproShield materials, and does not represent a specific job site condition and therefore may not be applicable to certain projects. Detail sketch is designed for use as a reference and must be approved by the designer/ consultant of record for each project prior to installation by the subcontractor. Changes and approvals of VaproShield details are the sole responsibility of the designer/consultant of record. VaproShield is **not** the designer of record for building enclosure details and takes no responsibility for the accuracy or interpretation of actual project site conditions.

DRAWN BY: AR

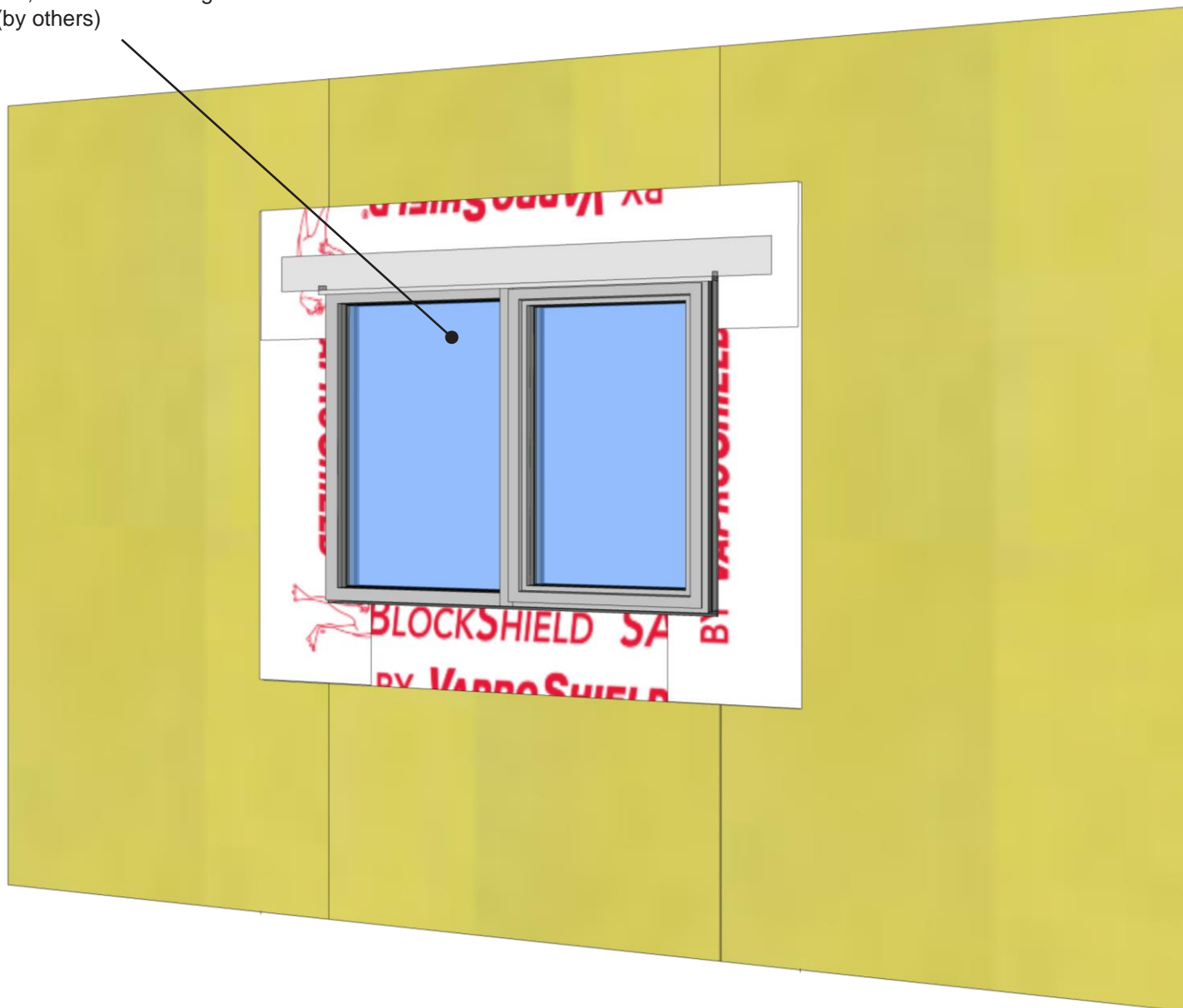
DATE: 10/1/21

REF: 262-3

Always check www.VaproShield.com for the latest details and installation instructions

Step 4: BlockFlashing SA Rough Opening Flashing Sequence

Commercial Window w/
sealant joint, backer
rod, and head flashing
(by others)



BlockFlashing SA is designed for locations where vapor permeability is not required. Steel framing with Densglass sheathing shown above.

PRODUCT DESCRIPTION

BlockShield SA is an air, water and vapor barrier membrane with an aggressive pressure-sensitive adhesive that does not require a primer and is easily applied to most construction substrates.

DISCLAIMER

Detail sketch is generic, representing suggested best practices for VaproShield materials, and does not represent a specific job site condition and therefore may not be applicable to certain projects. Detail sketch is designed for use as a reference and must be approved by the designer/ consultant of record for each project prior to installation by the subcontractor. Changes and approvals of VaproShield details are the sole responsibility of the designer/consultant of record. VaproShield is **not** the designer of record for building enclosure details and takes no responsibility for the accuracy or interpretation of actual project site conditions.

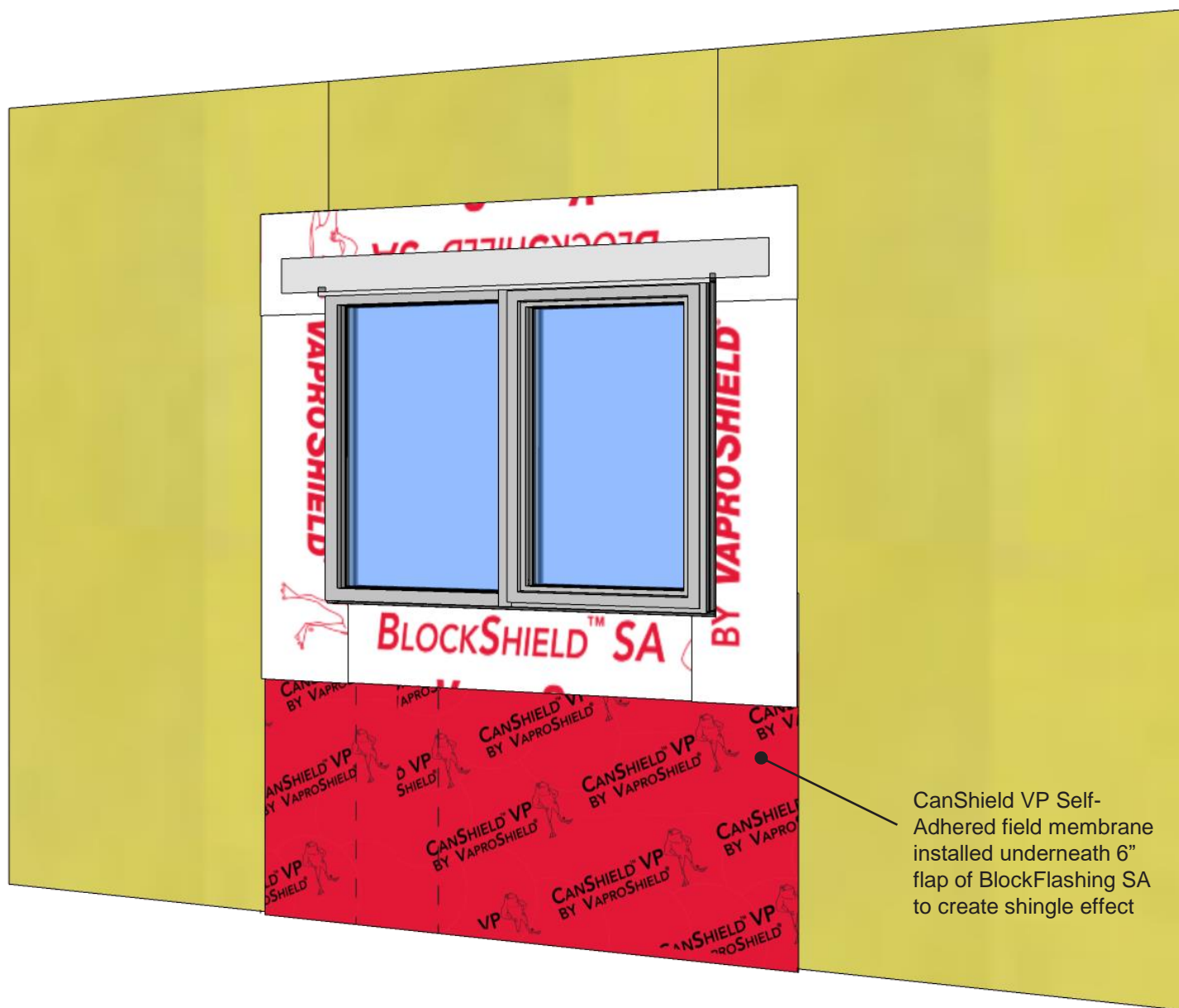
DRAWN BY: AR

DATE: 10/1/21

REF: 262-4

Always check www.VaproShield.com for the latest details and installation instructions

Step 5: BlockFlashing SA Rough Opening Flashing Sequence



BlockFlashing SA is designed for locations where vapor permeability is not required. Steel framing with Densglass sheathing shown above.

PRODUCT DESCRIPTION

BlockShield SA is an air, water and vapor barrier membrane with an aggressive pressure-sensitive adhesive that does not require a primer and is easily applied to most construction substrates.

DISCLAIMER

Detail sketch is generic, representing suggested best practices for VaproShield materials, and does not represent a specific job site condition and therefore may not be applicable to certain projects. Detail sketch is designed for use as a reference and must be approved by the designer/ consultant of record for each project prior to installation by the subcontractor. Changes and approvals of VaproShield details are the sole responsibility of the designer/consultant of record. VaproShield is **not** the designer of record for building enclosure details and takes no responsibility for the accuracy or interpretation of actual project site conditions.

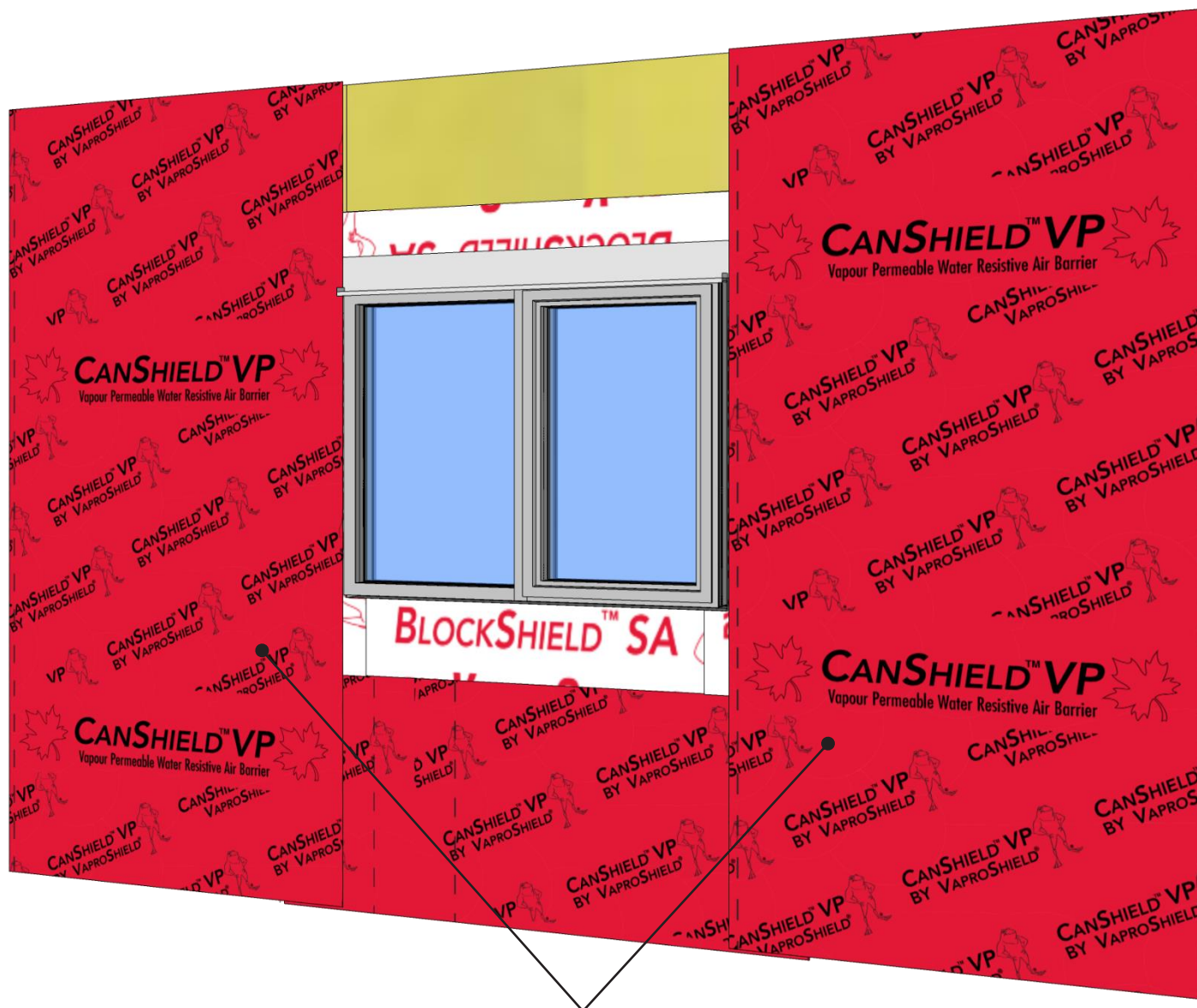
DRAWN BY: AR

DATE: 10/1/21

REF: 262-5

Always check www.VaproShield.com for the latest details and installation instructions

Step 6: BlockFlashing SA Rough Opening Flashing Sequence



CanShield VP Self-Adhered field membrane installed vertically with minimum 3" overlap,

BlockFlashing SA is designed for locations where vapor permeability is not required. Steel framing with Densglass sheathing shown above.

PRODUCT DESCRIPTION

BlockShield SA is an air, water and vapor barrier membrane with an aggressive pressure-sensitive adhesive that does not require a primer and is easily applied to most construction substrates.

DISCLAIMER

Detail sketch is generic, representing suggested best practices for VaproShield materials, and does not represent a specific job site condition and therefore may not be applicable to certain projects. Detail sketch is designed for use as a reference and must be approved by the designer/consultant of record for each project prior to installation by the subcontractor. Changes and approvals of VaproShield details are the sole responsibility of the designer/consultant of record. VaproShield is not the designer of record for building enclosure details and takes no responsibility for the accuracy or interpretation of actual project site conditions.

DRAWN BY: AR

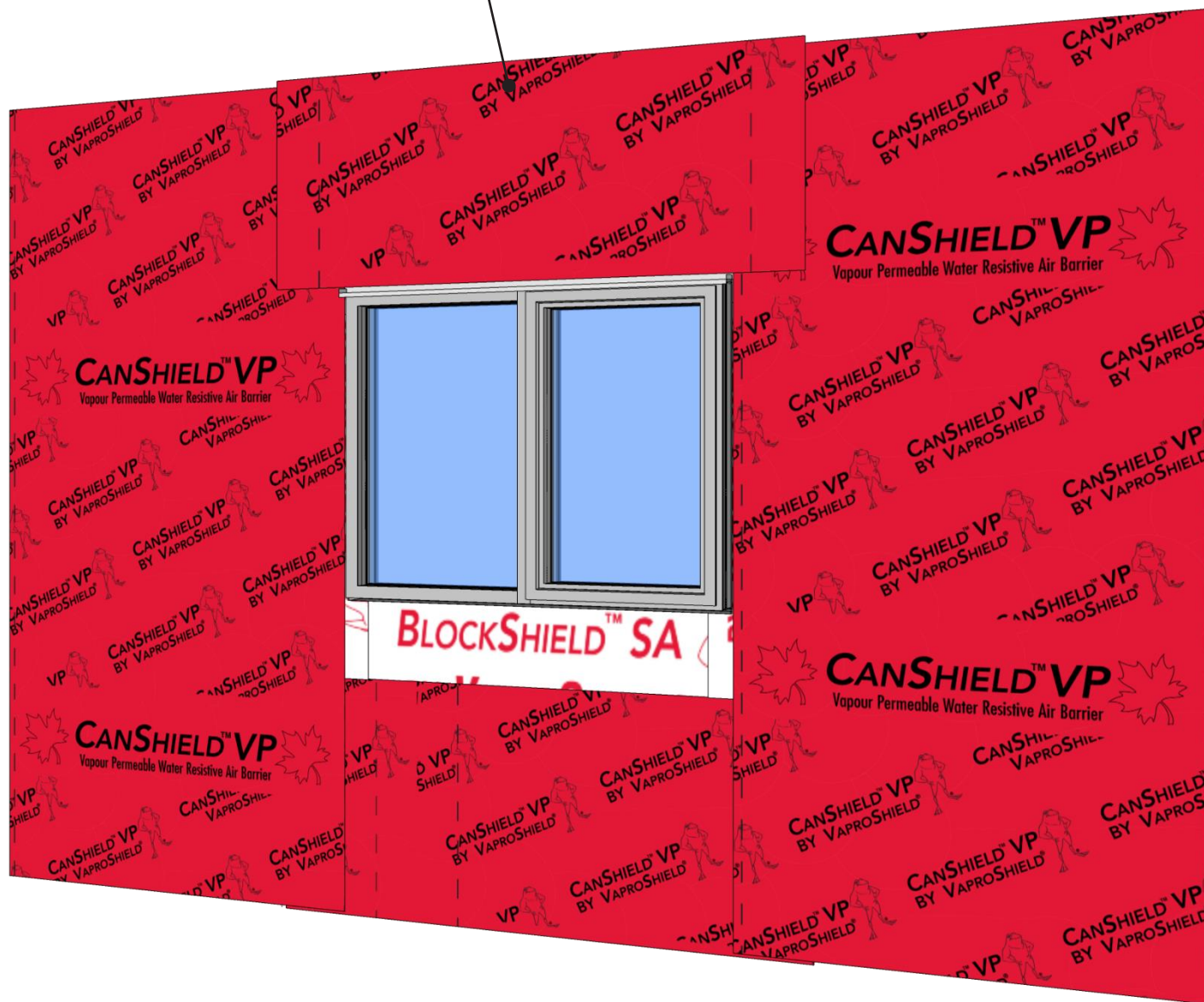
DATE: 10/1/21

REF: 262-6

Always check www.VaproShield.com for the latest details and installation instructions

Step 7: BlockFlashing SA Rough Opening Flashing Sequence

CanShield VP Self-Adhered
installed over head flashing and
BlockFlashing SA



BlockFlashing SA is designed for locations where vapor permeability is not required. Steel framing with Densglass sheathing shown above.

PRODUCT DESCRIPTION

BlockShield SA is an air, water and vapor barrier membrane with an aggressive pressure-sensitive adhesive that does not require a primer and is easily applied to most construction substrates.

DISCLAIMER

Detail sketch is generic, representing suggested best practices for VaproShield materials, and does not represent a specific job site condition and therefore may not be applicable to certain projects. Detail sketch is designed for use as a reference and must be approved by the designer/ consultant of record for each project prior to installation by the subcontractor. Changes and approvals of VaproShield details are the sole responsibility of the designer/consultant of record. VaproShield is not the designer of record for building enclosure details and takes no responsibility for the accuracy or interpretation of actual project site conditions.

DRAWN BY: AR

DATE: 10/1/21

REF: 262-7

Always check www.VaproShield.com for the latest details and installation instructions