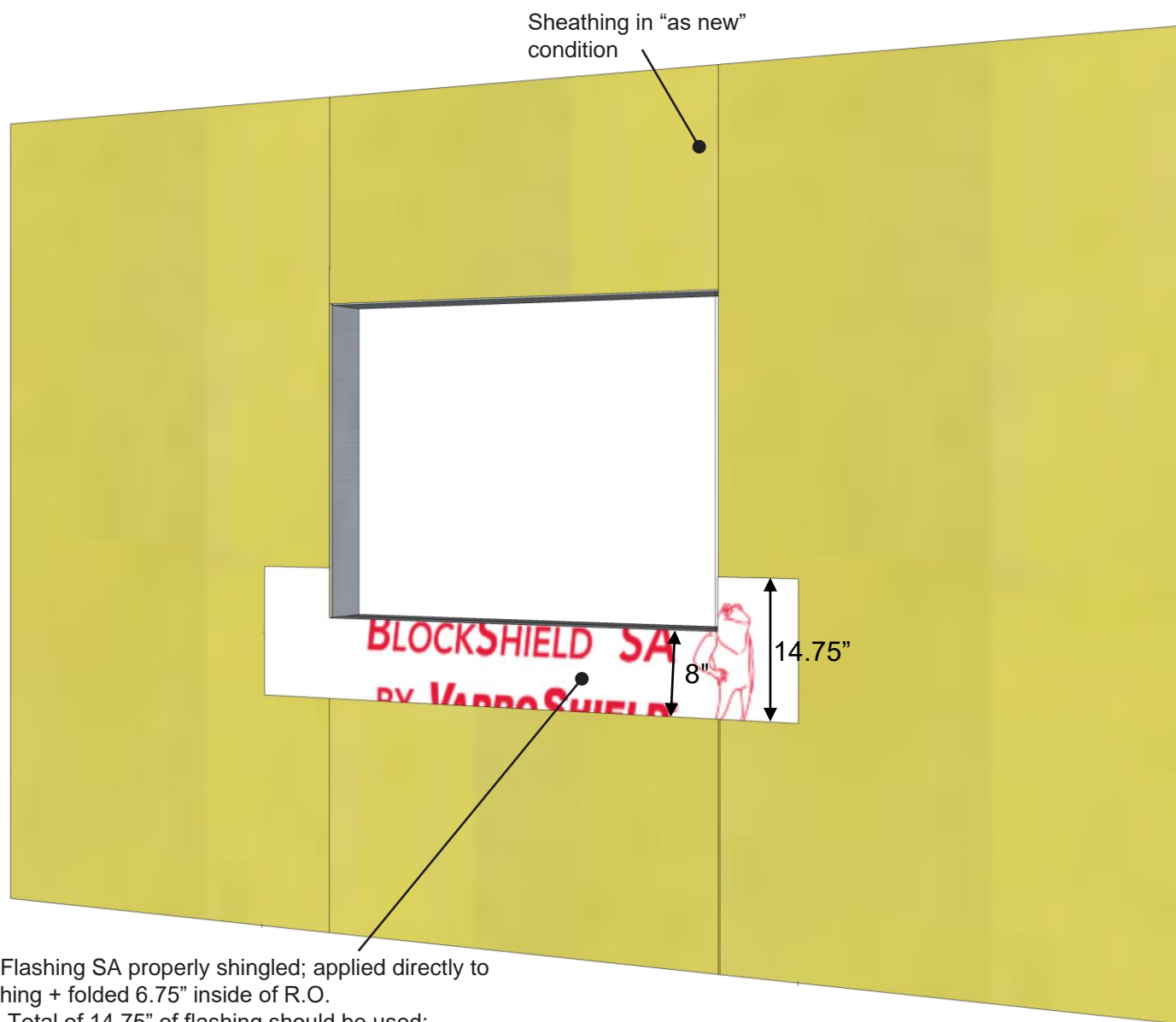


Step 1: BlockFlashing SA Rough Opening Flashing Sequence



BlockFlashing SA properly shingled; applied directly to sheathing + folded 6.75" inside of R.O.

Note: Total of 14.75" of flashing should be used:

- 8" of flashing should be left on the face of the sheathing
- 6" of release film from the bottom of the flashing to be left attached for shingling over membrane.

Step 1: Install BlockFlashing SA into sill with 6.75" folded into R.O. 8" left on face, with bottom 6" of release film to remain attached.

PRODUCT DESCRIPTION

BlockShield SA is an air, water and vapor barrier membrane with an aggressive pressure-sensitive adhesive that does not require a primer and is easily applied to most construction substrates.

DISCLAIMER

Detail sketch is generic, representing suggested best practices for VaproShield materials, and does not represent a specific job site condition and therefore may not be applicable to certain projects. Detail sketch is designed for use as a reference and must be approved by the designer/ consultant of record for each project prior to installation by the subcontractor. Changes and approvals of VaproShield details are the sole responsibility of the designer/consultant of record. VaproShield is **not** the designer of record for building enclosure details and takes no responsibility for the accuracy or interpretation of actual project site conditions.

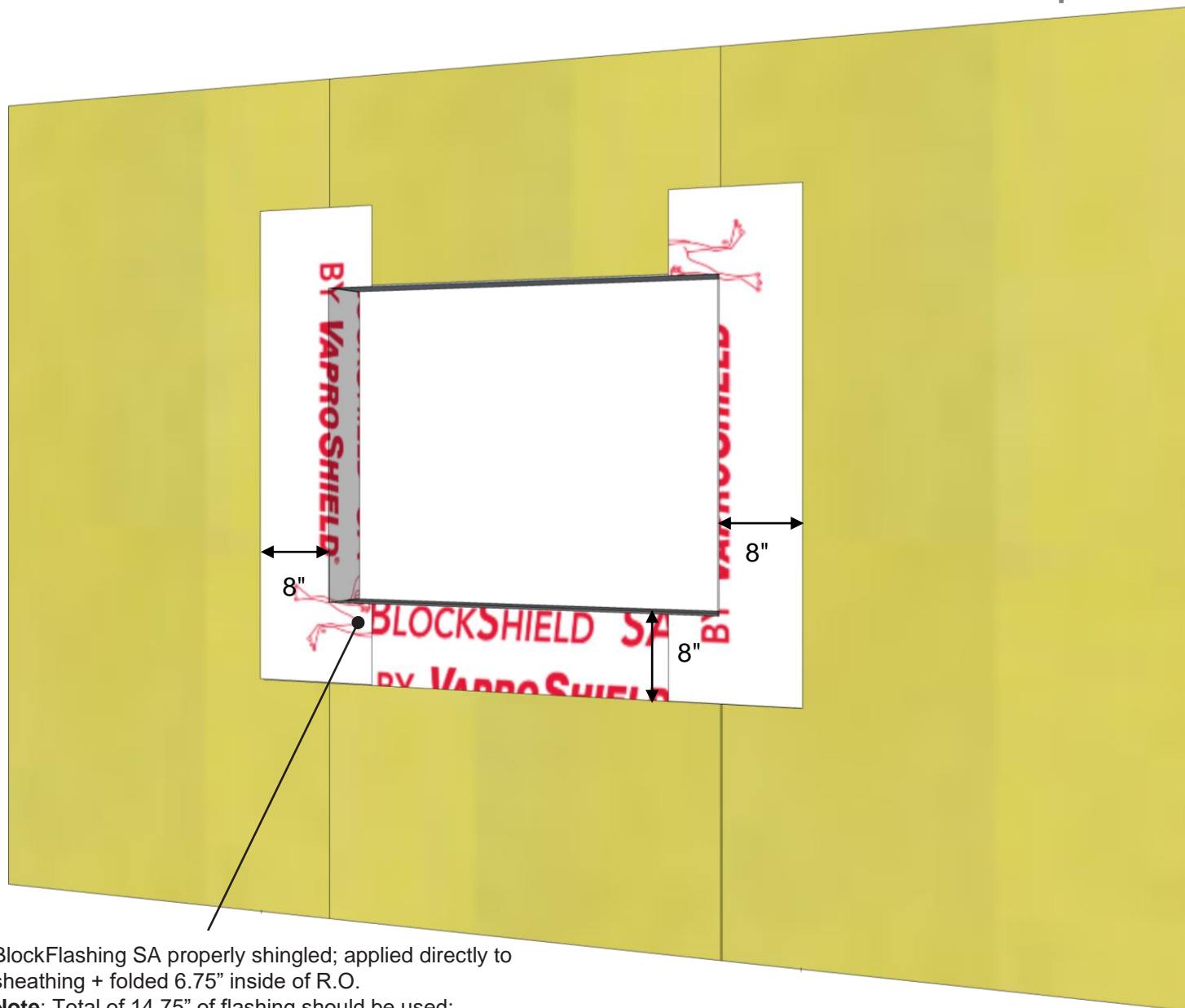
DRAWN BY: AR

DATE: 10/1/21

REF: 262-1

Always check www.VaproShield.com for the latest details and installation instructions

Step 2: BlockFlashing SA Rough Opening Flashing Sequence



BlockFlashing SA properly shingled; applied directly to sheathing + folded 6.75" inside of R.O.

Note: Total of 14.75" of flashing should be used:

- 8" of flashing should be left on the face of the sheathing
- 6" of release film from the bottom of the flashing to be left attached for shingling over membrane.

Step 2: Install jamb pieces with 6.75" folded into R.O. 8" to be left on face.

PRODUCT DESCRIPTION

BlockShield SA is an air, water and vapor barrier membrane with an aggressive pressure-sensitive adhesive that does not require a primer and is easily applied to most construction substrates.

DISCLAIMER

Detail sketch is generic, representing suggested best practices for VaproShield materials, and does not represent a specific job site condition and therefore may not be applicable to certain projects. Detail sketch is designed for use as a reference and must be approved by the designer/ consultant of record for each project prior to installation by the subcontractor. Changes and approvals of VaproShield details are the sole responsibility of the designer/consultant of record. VaproShield is **not** the designer of record for building enclosure details and takes no responsibility for the accuracy or interpretation of actual project site conditions.

DRAWN BY: AR

DATE: 10/1/21

REF: 262-2

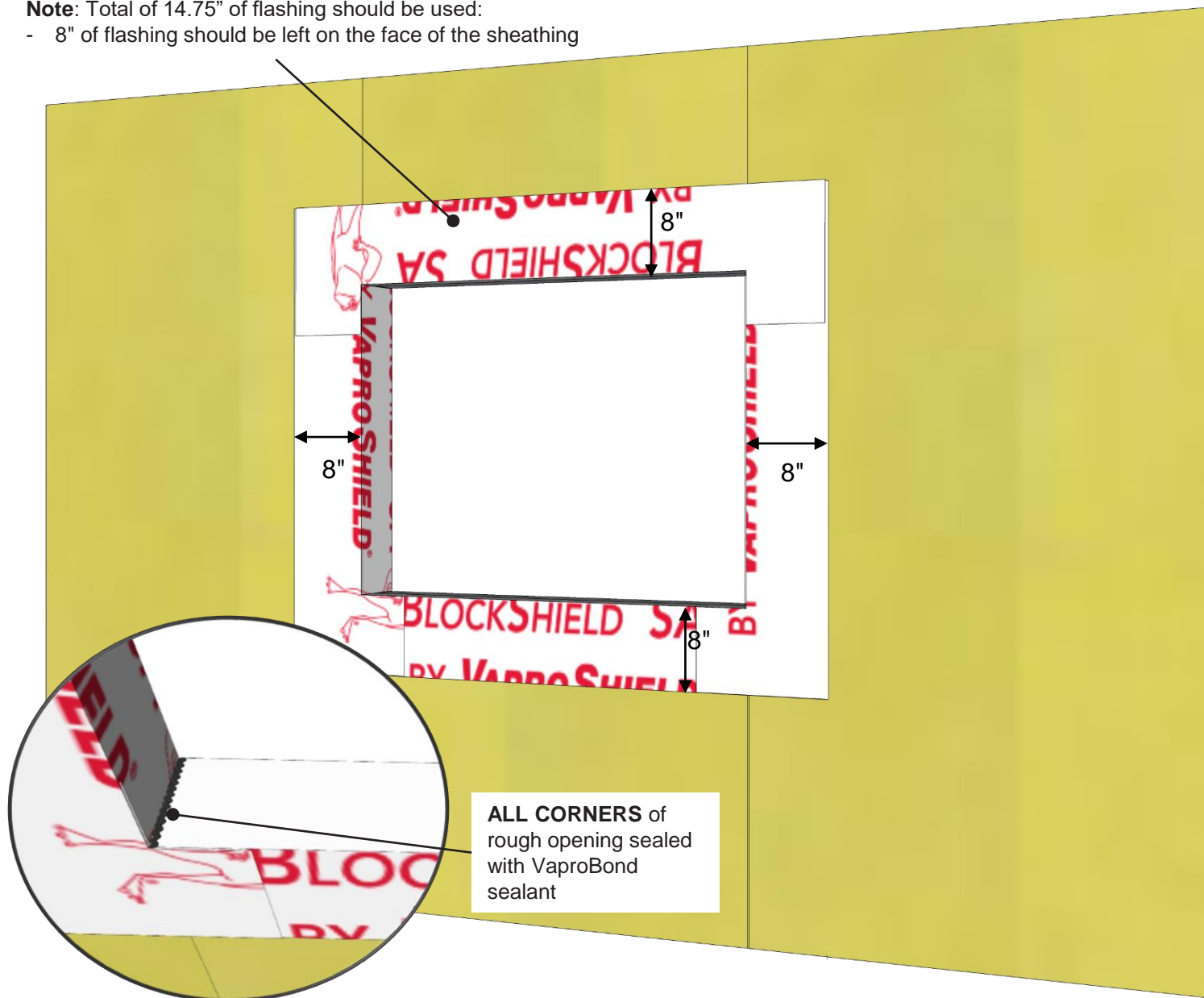
Always check www.VaproShield.com for the latest details and installation instructions

Step 3: BlockFlashing SA Rough Opening Flashing Sequence

BlockFlashing SA properly shingled; applied directly to sheathing + folded 6.75" inside of R.O.

Note: Total of 14.75" of flashing should be used:

- 8" of flashing should be left on the face of the sheathing



Step 3: Install head piece with 6.75" folded into R.O. 8" to be left on face.

PRODUCT DESCRIPTION

BlockShield SA is an air, water and vapor barrier membrane with an aggressive pressure-sensitive adhesive that does not require a primer and is easily applied to most construction substrates.

DISCLAIMER

Detail sketch is generic, representing suggested best practices for VaproShield materials, and does not represent a specific job site condition and therefore may not be applicable to certain projects. Detail sketch is designed for use as a reference and must be approved by the designer/ consultant of record for each project prior to installation by the subcontractor. Changes and approvals of VaproShield details are the sole responsibility of the designer/consultant of record. VaproShield is **not** the designer of record for building enclosure details and takes no responsibility for the accuracy or interpretation of actual project site conditions.

DRAWN BY: AR

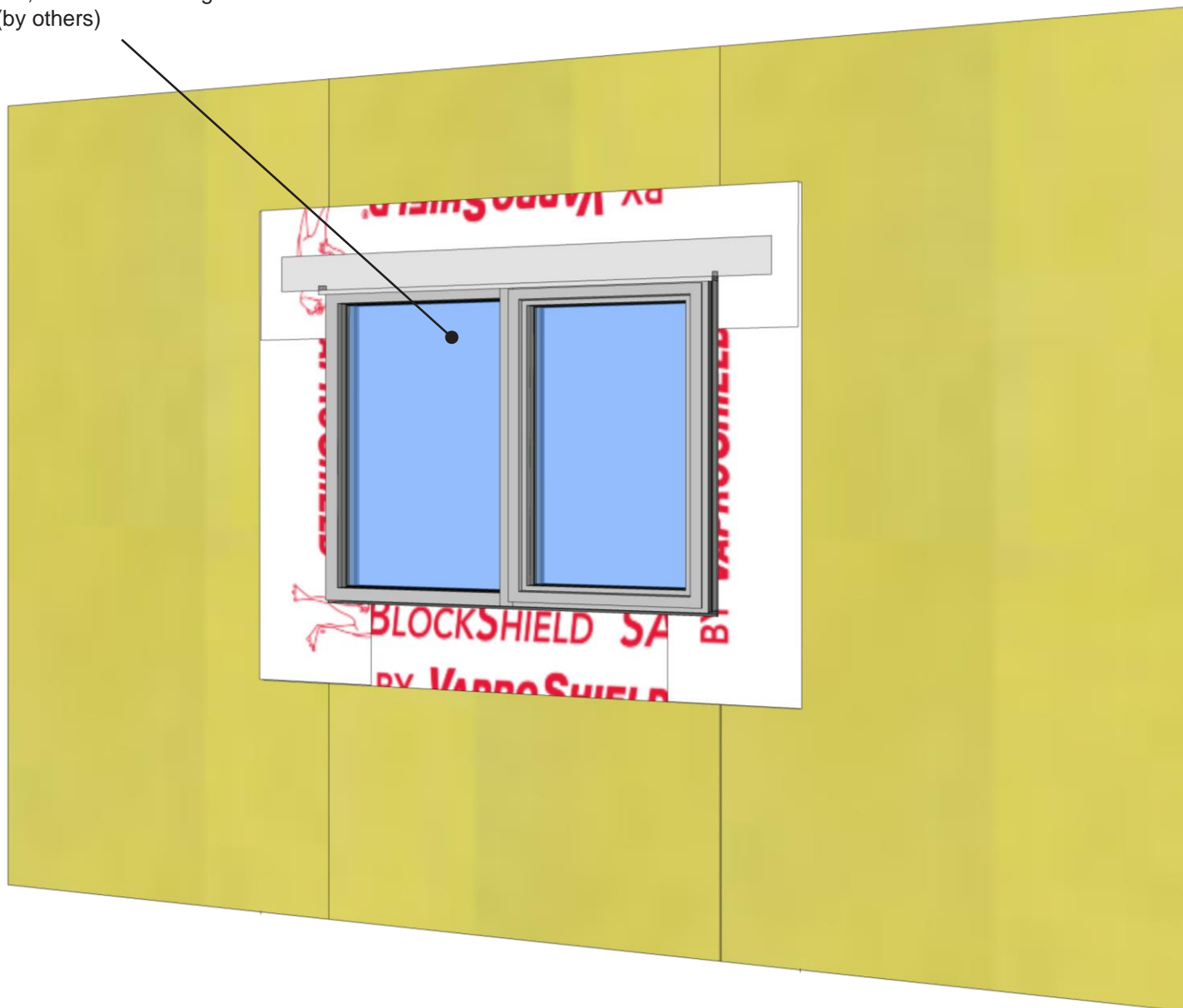
DATE: 10/1/21

REF: 262-3

Always check www.VaproShield.com for the latest details and installation instructions

Step 4: BlockFlashing SA Rough Opening Flashing Sequence

Commercial Window w/
sealant joint, backer
rod, and head flashing
(by others)



Step 4: Install commercial window w/ perimeter sealant joint and backer rod (by others). Install metal head flashing (by others) over cured VaproBond

PRODUCT DESCRIPTION

BlockShield SA is an air, water and vapor barrier membrane with an aggressive pressure-sensitive adhesive that does not require a primer and is easily applied to most construction substrates.

DISCLAIMER

Detail sketch is generic, representing suggested best practices for VaproShield materials, and does not represent a specific job site condition and therefore may not be applicable to certain projects. Detail sketch is designed for use as a reference and must be approved by the designer/ consultant of record for each project prior to installation by the subcontractor. Changes and approvals of VaproShield details are the sole responsibility of the designer/consultant of record. VaproShield is **not** the designer of record for building enclosure details and takes no responsibility for the accuracy or interpretation of actual project site conditions.

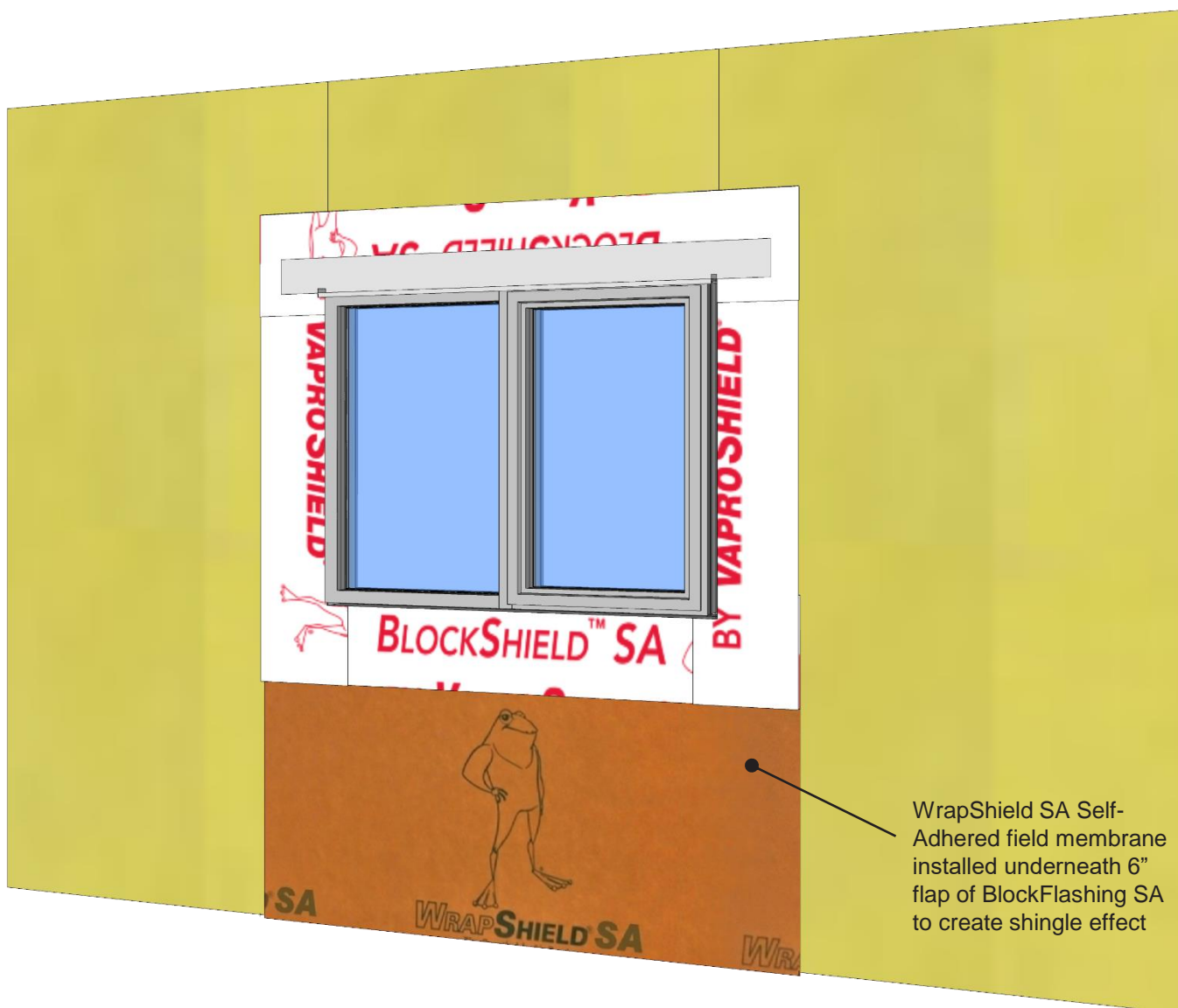
DRAWN BY: AR

DATE: 10/1/21

REF: 262-4

Always check www.VaproShield.com for the latest details and installation instructions

Step 5: BlockFlashing SA Rough Opening Flashing Sequence



Step 5: Install field membrane, shingled underneath window flashing

PRODUCT DESCRIPTION

BlockShield SA is an air, water and vapor barrier membrane with an aggressive pressure-sensitive adhesive that does not require a primer and is easily applied to most construction substrates.

DISCLAIMER

Detail sketch is generic, representing suggested best practices for VaproShield materials, and does not represent a specific job site condition and therefore may not be applicable to certain projects. Detail sketch is designed for use as a reference and must be approved by the designer/consultant of record for each project prior to installation by the subcontractor. Changes and approvals of VaproShield details are the sole responsibility of the designer/consultant of record. VaproShield is **not** the designer of record for building enclosure details and takes no responsibility for the accuracy or interpretation of actual project site conditions.

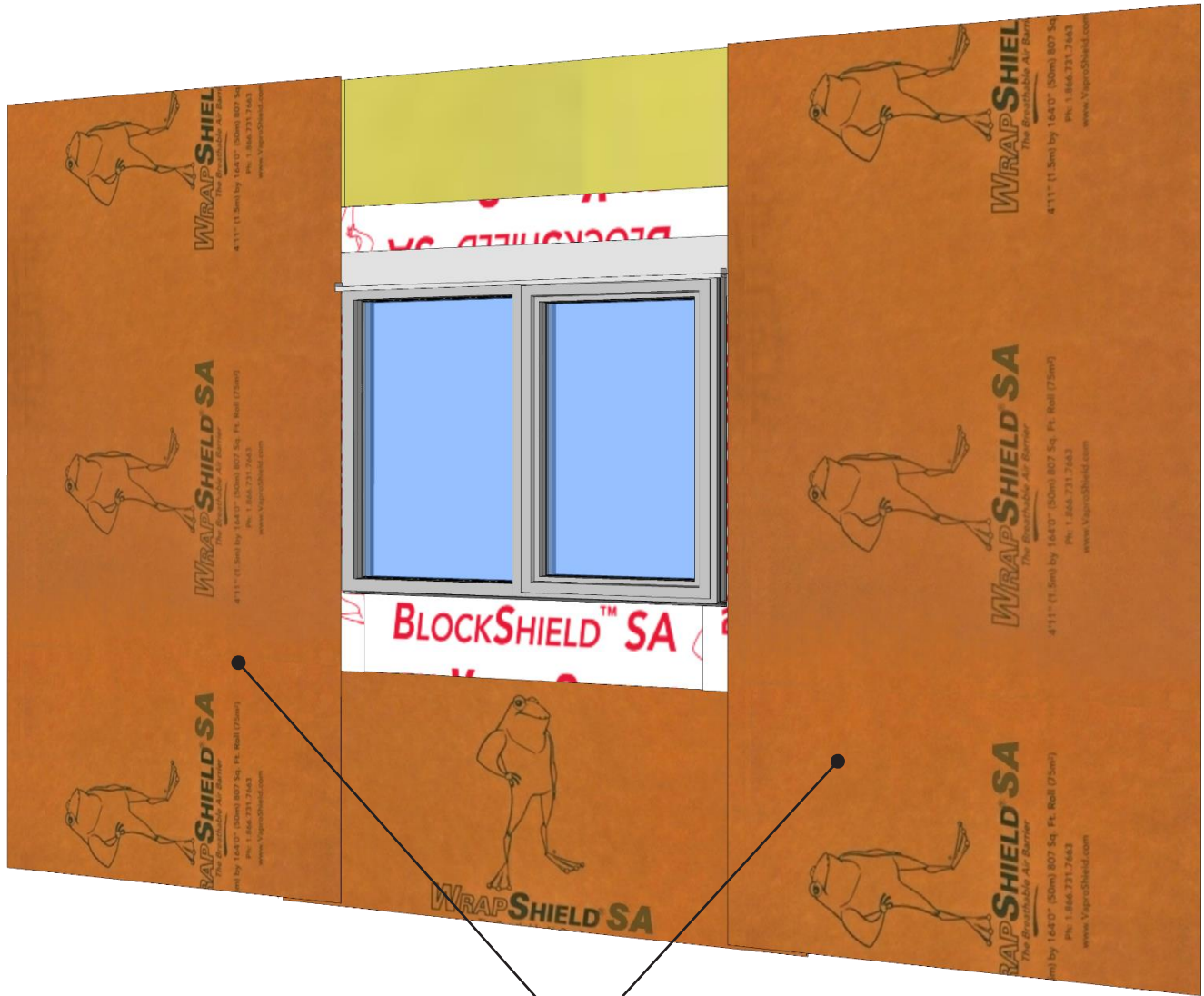
DRAWN BY: AR

DATE: 10/1/21

REF: 262-5

Always check www.VaproShield.com for the latest details and installation instructions

Step 6: BlockFlashing SA Rough Opening Flashing Sequence



WrapShield SA Self-Adhered field membrane
installed vertically with minimum 3" overlap,

Step 6: Install field membrane
vertically to sheathing, maintaining
3" minimum overlap with R.O.
flashing

PRODUCT DESCRIPTION

BlockShield SA is an air, water
and vapor barrier membrane
with an aggressive pressure-
sensitive adhesive that does not
require a primer and is easily
applied to most construction
substrates.

DISCLAIMER

Detail sketch is generic, representing suggested best
practices for VaproShield materials, and does not
represent a specific job site condition and therefore may
not be applicable to certain projects. Detail sketch is
designed for use as a reference and must be approved by
the designer/ consultant of record for each project prior to
installation by the subcontractor. Changes and approvals
of VaproShield details are the sole responsibility of the
designer/consultant of record. VaproShield is **not** the
designer of record for building enclosure details and takes
no responsibility for the accuracy or interpretation of
actual project site conditions.

DRAWN BY: AR

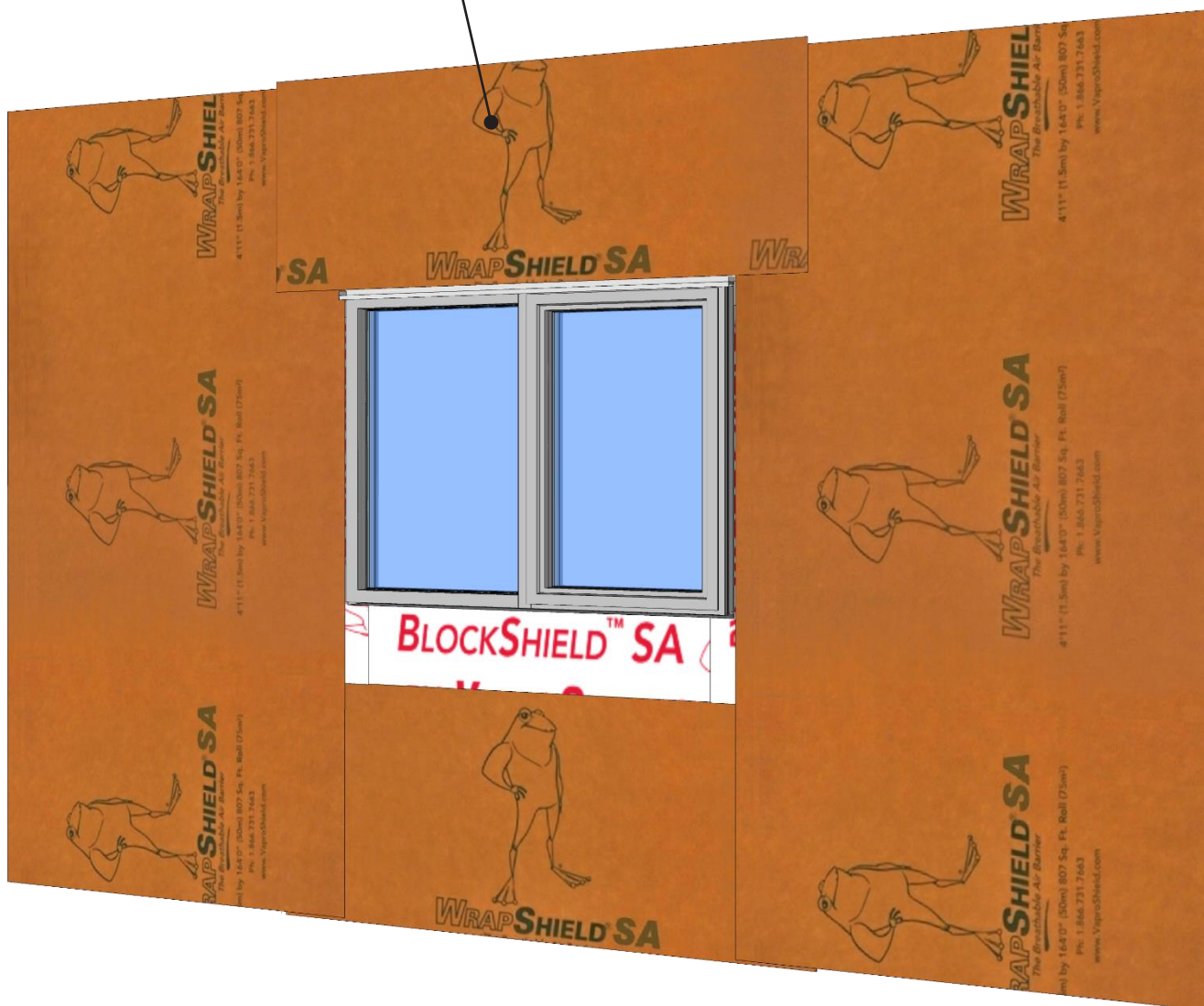
DATE: 10/1/21

REF: 262-6

Always check www.VaproShield.com for the latest details and installation instructions

Step 7: BlockFlashing SA Rough Opening Flashing Sequence

WrapShield SA Self-Adhered
installed over head flashing and
BlockFlashing SA



Step 7: Install field membrane over metal head flashing, maintaining 3" minimum overlap to adjacent field membrane.

PRODUCT DESCRIPTION

BlockShield SA is an air, water and vapor barrier membrane with an aggressive pressure-sensitive adhesive that does not require a primer and is easily applied to most construction substrates.

DISCLAIMER

Detail sketch is generic, representing suggested best practices for VaproShield materials, and does not represent a specific job site condition and therefore may not be applicable to certain projects. Detail sketch is designed for use as a reference and must be approved by the designer/ consultant of record for each project prior to installation by the subcontractor. Changes and approvals of VaproShield details are the sole responsibility of the designer/consultant of record. VaproShield is **not** the designer of record for building enclosure details and takes no responsibility for the accuracy or interpretation of actual project site conditions.

DRAWN BY: AR

DATE: 10/1/21

REF: 262-7

Always check www.VaproShield.com for the latest details and installation instructions