

# Panelized Construction: Sequential Field Assembly Instructions Overview

Panelized construction in factory settings offers excellent economies of scale to the final installed cost of a WRB/AB material. Ease of access and controlled environmental conditions can drastically improve the quality of the installation. However, if the proper sequencing for a streamlined connection once the panels arrive onsite is not understood from the start, then any improvements in quality will not be realized and could lead to failure of the WRB/AB system.

Always check [www.VaproShield.com](http://www.VaproShield.com) for the latest details and installation instructions

Panels are trucked to the job site. During both Loading and unloading care **MUST BE TAKEN TO NOT DAMAGE THE PANELSHIELD MATERIAL!**



#### DISCLAIMER

Detail sketch is generic, representing suggested best practices for VaproShield materials, and does not represent a specific job site condition and therefore may not be applicable to certain projects. Detail sketch is designed for use as a reference and must be approved by the designer/ consultant of record for each project prior to installation by the subcontractor. Changes and approvals of VaproShield details are the sole responsibility of the designer/consultant of record. VaproShield is **not** the designer of record for building enclosure details and takes no responsibility for the accuracy or interpretation of actual project site conditions.

Always check [www.VaproShield.com](http://www.VaproShield.com) for the latest details and installation instructions

VaproShield LLC  
915 26th Ave. N.W. Suite C5  
Gig Harbor, WA 98335  
Toll Free: 1.866.731.7663  
[www.VaproShield.com](http://www.VaproShield.com)  
© VaproShield 3/15/2016

Panels are easily installed to all floors with a crane



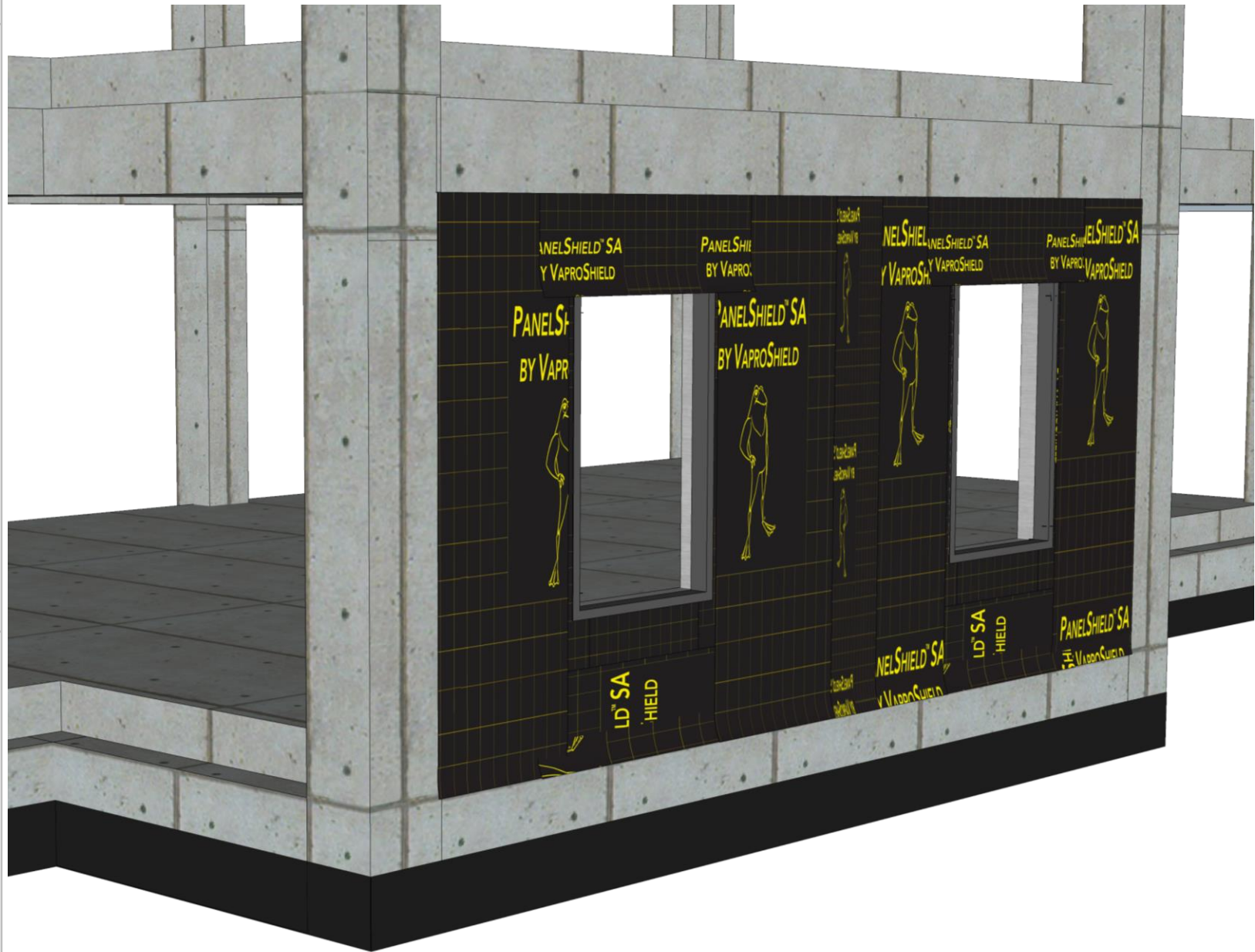
#### DISCLAIMER

Detail sketch is generic, representing suggested best practices for VaproShield materials, and does not represent a specific job site condition and therefore may not be applicable to certain projects. Detail sketch is designed for use as a reference and must be approved by the designer/consultant of record for each project prior to installation by the subcontractor. Changes and approvals of VaproShield details are the sole responsibility of the designer/consultant of record. VaproShield is **not** the designer of record for building enclosure details and takes no responsibility for the accuracy or interpretation of actual project site conditions.

Always check [www.VaproShield.com](http://www.VaproShield.com) for the latest details and installation instructions



Place fully wrapped panel into place



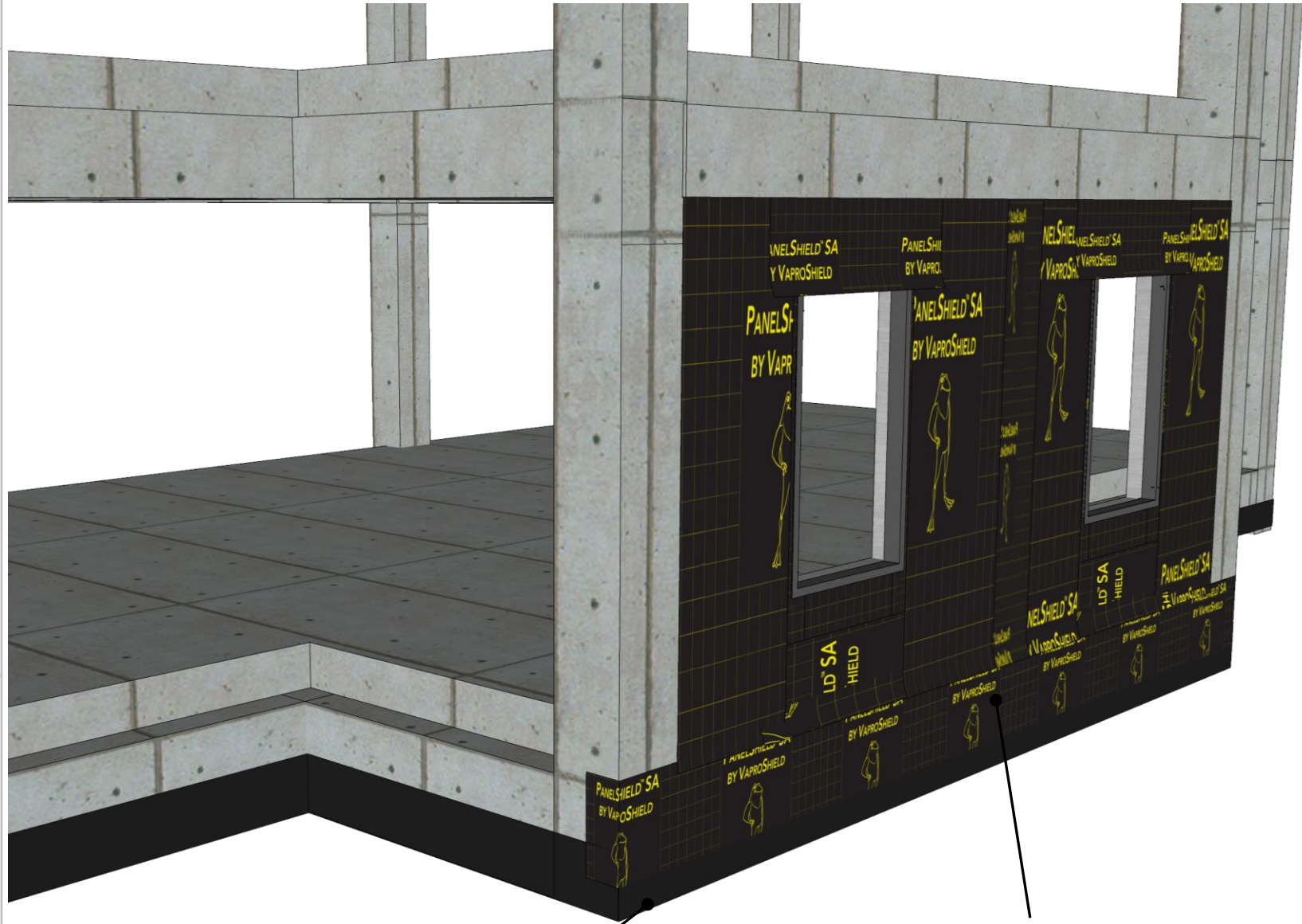
## DISCLAIMER

Detail sketch is generic, representing suggested best practices for VaproShield materials, and does not represent a specific job site condition and therefore may not be applicable to certain projects. Detail sketch is designed for use as a reference and must be approved by the designer/ consultant of record for each project prior to installation by the subcontractor. Changes and approvals of VaproShield details are the sole responsibility of the designer/consultant of record. VaproShield is **not** the designer of record for building enclosure details and takes no responsibility for the accuracy or interpretation of actual project site conditions.

Always check [www.VaproShield.com](http://www.VaproShield.com) for the latest details and installation instructions

VaproShield LLC  
915 26th Ave. N.W. Suite C5  
Gig Harbor, WA 98335  
Toll Free: 1.866.731.7663  
[www.VaproShield.com](http://www.VaproShield.com)  
© VaproShield 3/15/2016

PanelFlashing SA installs under material left unattached at bottom of panel



## DISCLAIMER

Detail sketch is generic, representing suggested best practices for VaproShield materials, and does not represent a specific job site condition and therefore may not be applicable to certain projects. Detail sketch is designed for use as a reference and must be approved by the designer/ consultant of record for each project prior to installation by the subcontractor. Changes and approvals of VaproShield details are the sole responsibility of the designer/consultant of record. VaproShield is **not** the designer of record for building enclosure details and takes no responsibility for the accuracy or interpretation of actual project site conditions.

Always check [www.VaproShield.com](http://www.VaproShield.com) for the latest details and installation instructions

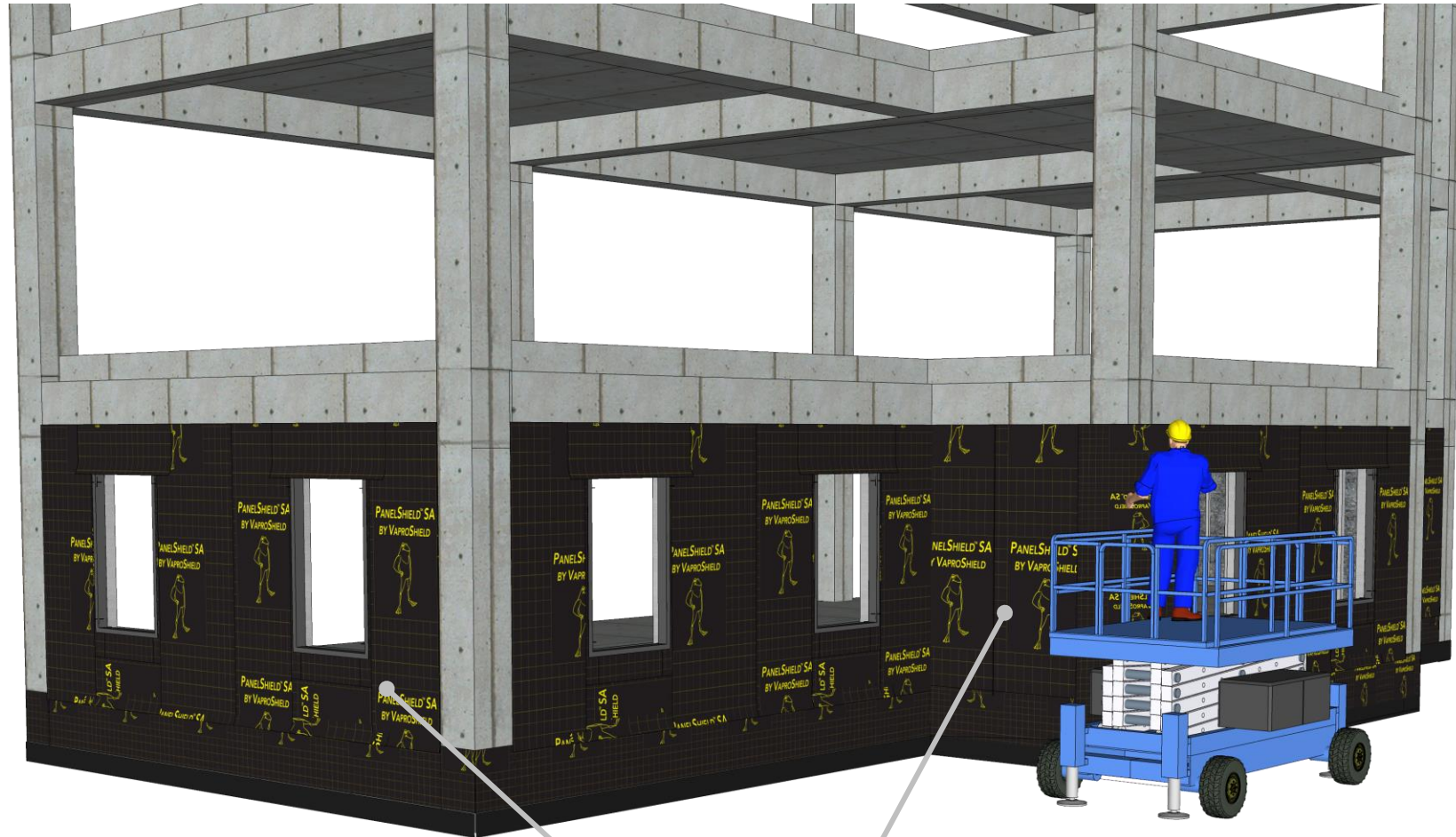
VaproShield LLC  
915 26th Ave. N.W. Suite C5  
Gig Harbor, WA 98335  
Toll Free: 1.866.731.7663  
[www.VaproShield.com](http://www.VaproShield.com)  
© VaproShield 3/15/2016

PanelFlashing SA installed beneath detached field membrane, properly shingled (release film left attached on bottom 6" of field membrane, as per Factory Installation best practices)

PanelFlashing SA installed at vertical seams



Fill in bottom floor with panels, installing PanelFlashing SA around entire base of building



## DISCLAIMER

Detail sketch is generic, representing suggested best practices for VaproShield materials, and does not represent a specific job site condition and therefore may not be applicable to certain projects. Detail sketch is designed for use as a reference and must be approved by the designer/ consultant of record for each project prior to installation by the subcontractor. Changes and approvals of VaproShield details are the sole responsibility of the designer/consultant of record. VaproShield is **not** the designer of record for building enclosure details and takes no responsibility for the accuracy or interpretation of actual project site conditions.

Always check [www.VaproShield.com](http://www.VaproShield.com) for the latest details and installation instructions

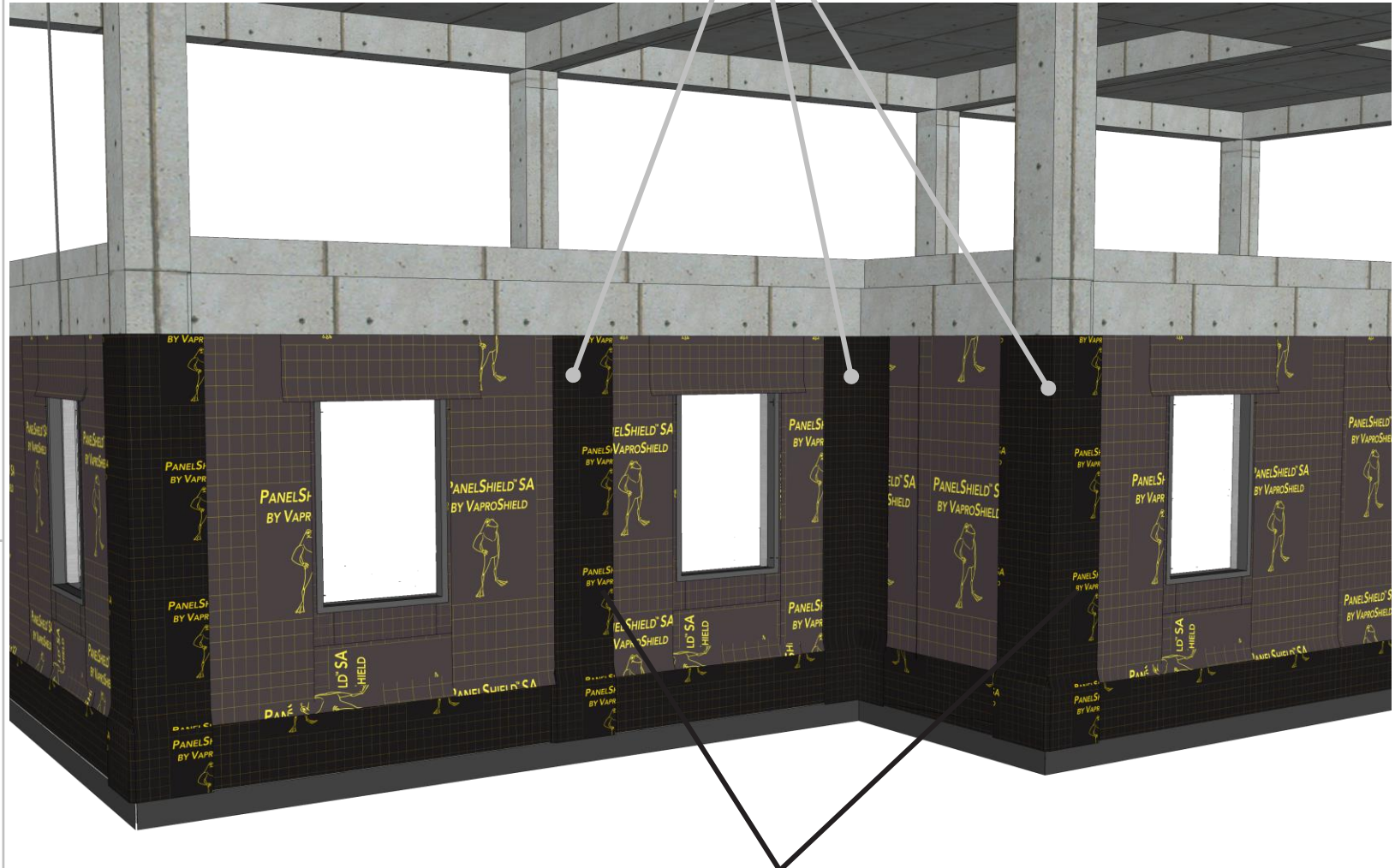
VaproShield LLC  
915 26th Ave. N.W. Suite C5  
Gig Harbor, WA 98335  
Toll Free: 1.866.731.7663  
[www.VaproShield.com](http://www.VaproShield.com)  
© VaproShield 3/15/2016

Fill in 1<sup>st</sup> floor of building with panels, install PanelFlashing SA beneath bottom flap of field membrane with bottom 6" of release film attached

# Panelized Construction: Sequential Field Assembly Instructions Overview

Cover inside and outside corners and ALL vertical seams with PanelFlashing SA, which spans corners and seams, and can be installed by one person

PanelFlashing SA installed on inside and outside corners and ALL VERTICAL SEAMS with minimum 6" overlap onto panel



## DISCLAIMER

Detail sketch is generic, representing suggested best practices for VaproShield materials, and does not represent a specific job site condition and therefore may not be applicable to certain projects. Detail sketch is designed for use as a reference and must be approved by the designer/consultant of record for each project prior to installation by the subcontractor. Changes and approvals of VaproShield details are the sole responsibility of the designer/consultant of record. VaproShield is **not** the designer of record for building enclosure details and takes no responsibility for the accuracy or interpretation of actual project site conditions.

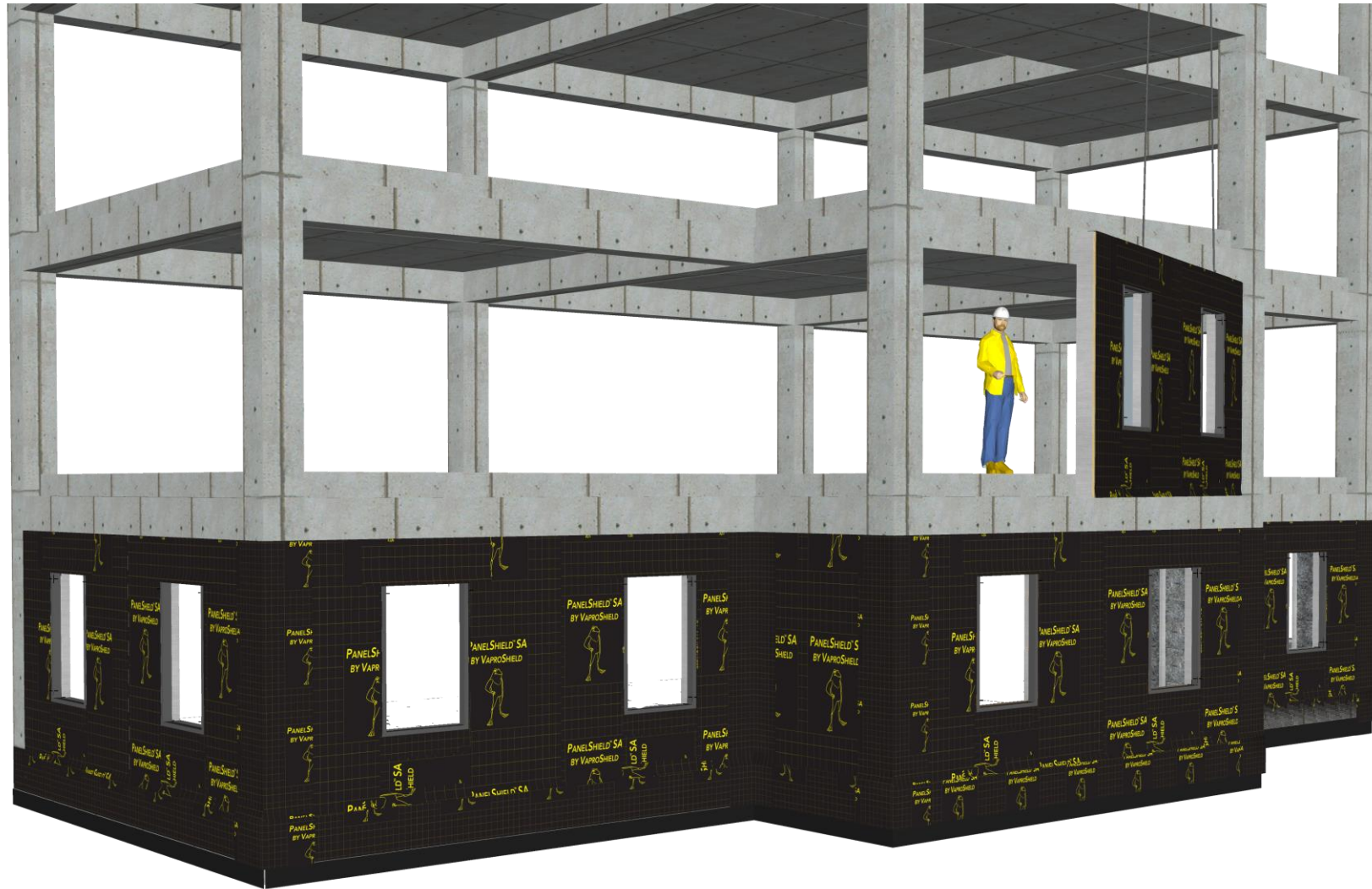
Always check [www.VaproShield.com](http://www.VaproShield.com) for the latest details and installation instructions

VaproShield LLC  
915 26th Ave. N.W. Suite C5  
Gig Harbor, WA 98335  
Toll Free: 1.866.731.7663  
[www.VaproShield.com](http://www.VaproShield.com)  
© VaproShield 3/15/2016

**VaproShield membranes are designed to be installed with minimal labor and no special tools**



Install 2<sup>nd</sup> floor panels,  
then install PanelFlashing  
SA underneath upper  
course and shingled over  
lower course to create  
shingle effect



## DISCLAIMER

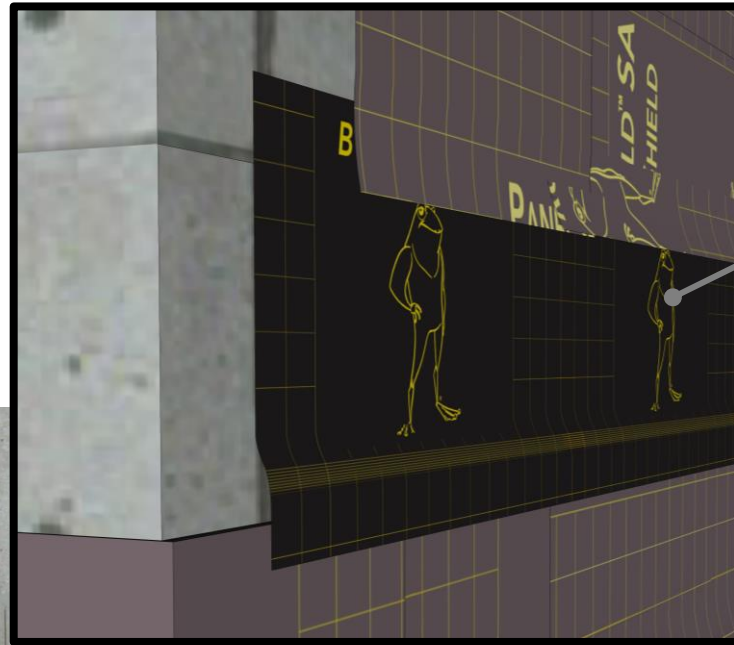
Detail sketch is generic, representing suggested best practices for VaproShield materials, and does not represent a specific job site condition and therefore may not be applicable to certain projects. Detail sketch is designed for use as a reference and must be approved by the designer/consultant of record for each project prior to installation by the subcontractor. Changes and approvals of VaproShield details are the sole responsibility of the designer/consultant of record. VaproShield is **not** the designer of record for building enclosure details and takes no responsibility for the accuracy or interpretation of actual project site conditions.

Always check [www.VaproShield.com](http://www.VaproShield.com)  
for the latest details and installation  
instructions



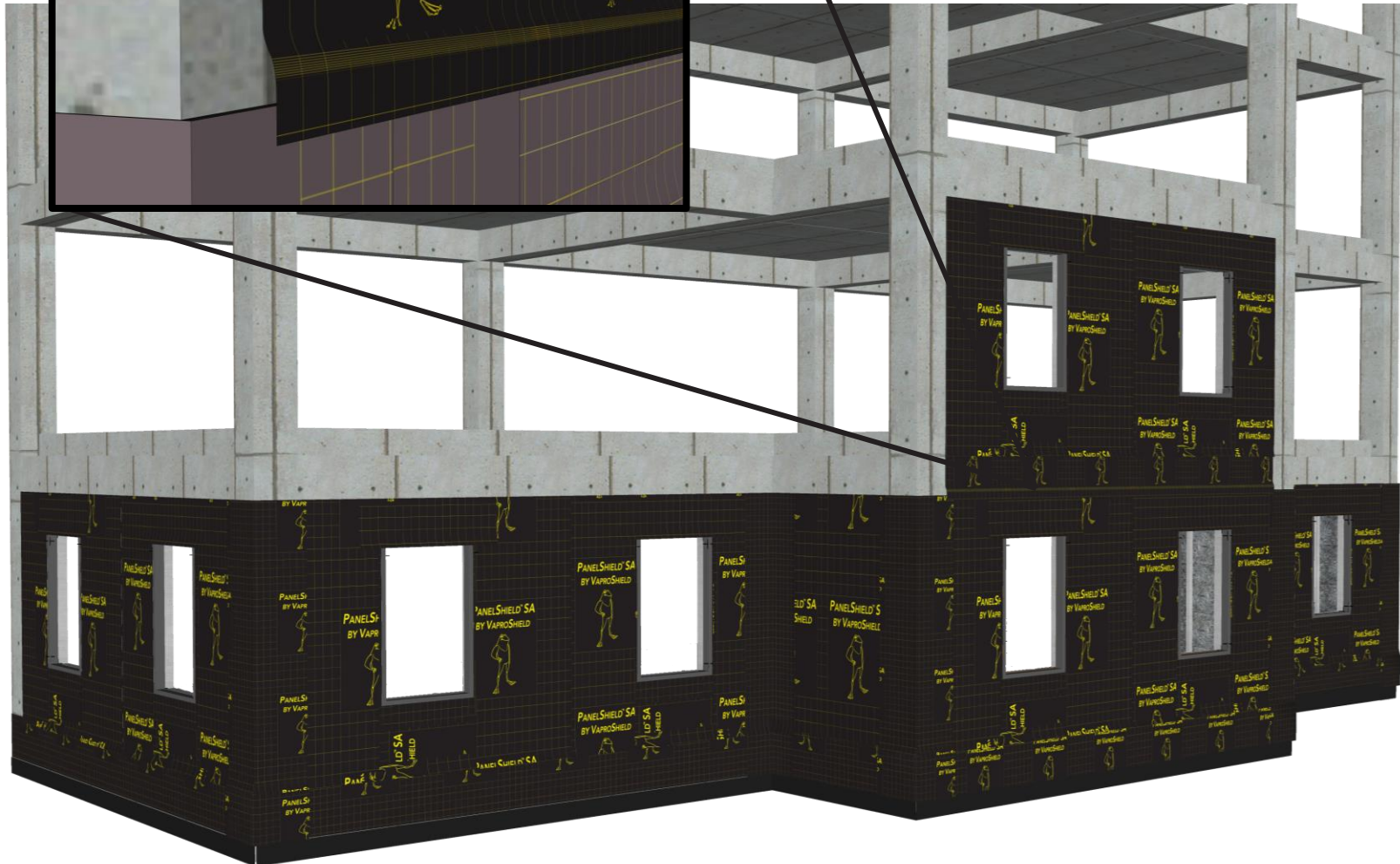
# Panelized Construction: Sequential Field Assembly Instructions Overview

Install 2<sup>nd</sup> floor panels, then install PanelFlashing SA underneath upper course and shingled over lower course to create shingle effect



PanelFlashing SA installed underneath unattached field membrane on bottom of 2<sup>nd</sup> story panel

PanelFlashing SA overlaps the top 6" of first floor panel



## DISCLAIMER

Detail sketch is generic, representing suggested best practices for VaproShield materials, and does not represent a specific job site condition and therefore may not be applicable to certain projects. Detail sketch is designed for use as a reference and must be approved by the designer/consultant of record for each project prior to installation by the subcontractor. Changes and approvals of VaproShield details are the sole responsibility of the designer/consultant of record. VaproShield is **not** the designer of record for building enclosure details and takes no responsibility for the accuracy or interpretation of actual project site conditions.

Always check [www.VaproShield.com](http://www.VaproShield.com) for the latest details and installation instructions

Install 2<sup>nd</sup> floor panels,  
then install PanelFlashing  
SA underneath upper  
course and shingled over  
lower course to create  
shingle effect



## DISCLAIMER

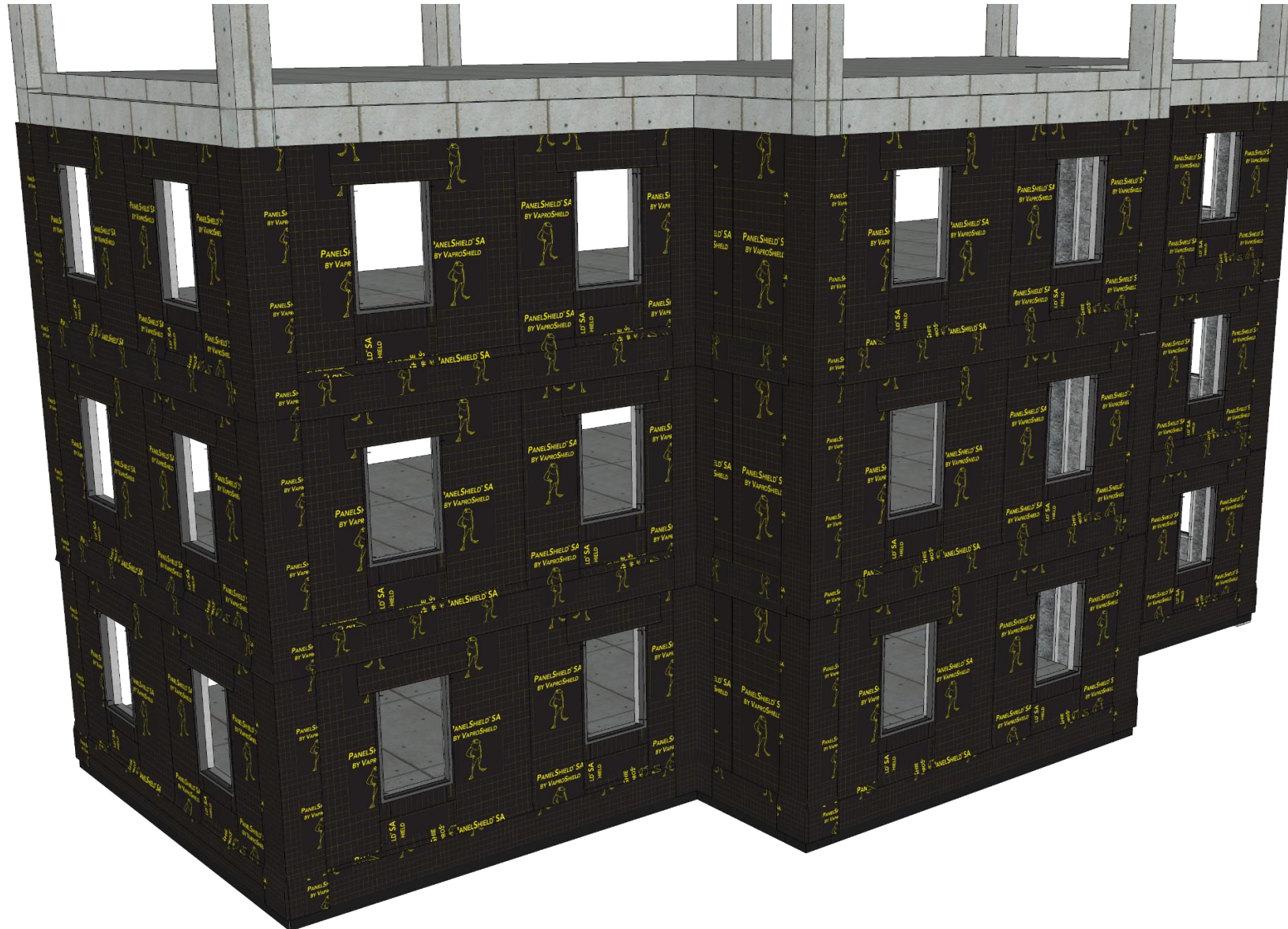
Detail sketch is generic, representing suggested best practices for VaproShield materials, and does not represent a specific job site condition and therefore may not be applicable to certain projects. Detail sketch is designed for use as a reference and must be approved by the designer/ consultant of record for each project prior to installation by the subcontractor. Changes and approvals of VaproShield details are the sole responsibility of the designer/consultant of record. VaproShield is **not** the designer of record for building enclosure details and takes no responsibility for the accuracy or interpretation of actual project site conditions.

Always check [www.VaproShield.com](http://www.VaproShield.com)  
for the latest details and installation  
instructions

VaproShield LLC  
915 26th Ave. N.W. Suite C5  
Gig Harbor, WA 98335  
Toll Free: 1.866.731.7663  
[www.VaproShield.com](http://www.VaproShield.com)  
© VaproShield 3/15/2016



Continue filling in above floors, using PanelFlashing SA to shingle between floors



## DISCLAIMER

Detail sketch is generic, representing suggested best practices for VaproShield materials, and does not represent a specific job site condition and therefore may not be applicable to certain projects. Detail sketch is designed for use as a reference and must be approved by the designer/consultant of record for each project prior to installation by the subcontractor. Changes and approvals of VaproShield details are the sole responsibility of the designer/consultant of record. VaproShield is **not** the designer of record for building enclosure details and takes no responsibility for the accuracy or interpretation of actual project site conditions.

Always check [www.VaproShield.com](http://www.VaproShield.com) for the latest details and installation instructions

VaproShield LLC  
915 26th Ave. N.W. Suite C5  
Gig Harbor, WA 98335  
Toll Free: 1.866.731.7663  
[www.VaproShield.com](http://www.VaproShield.com)  
© VaproShield 3/15/2016

Continue filling in above floors, using PanelFlashing SA to shingle between floors



## DISCLAIMER

Detail sketch is generic, representing suggested best practices for VaproShield materials, and does not represent a specific job site condition and therefore may not be applicable to certain projects. Detail sketch is designed for use as a reference and must be approved by the designer/ consultant of record for each project prior to installation by the subcontractor. Changes and approvals of VaproShield details are the sole responsibility of the designer/consultant of record. VaproShield is **not** the designer of record for building enclosure details and takes no responsibility for the accuracy or interpretation of actual project site conditions.

Always check [www.VaproShield.com](http://www.VaproShield.com) for the latest details and installation instructions



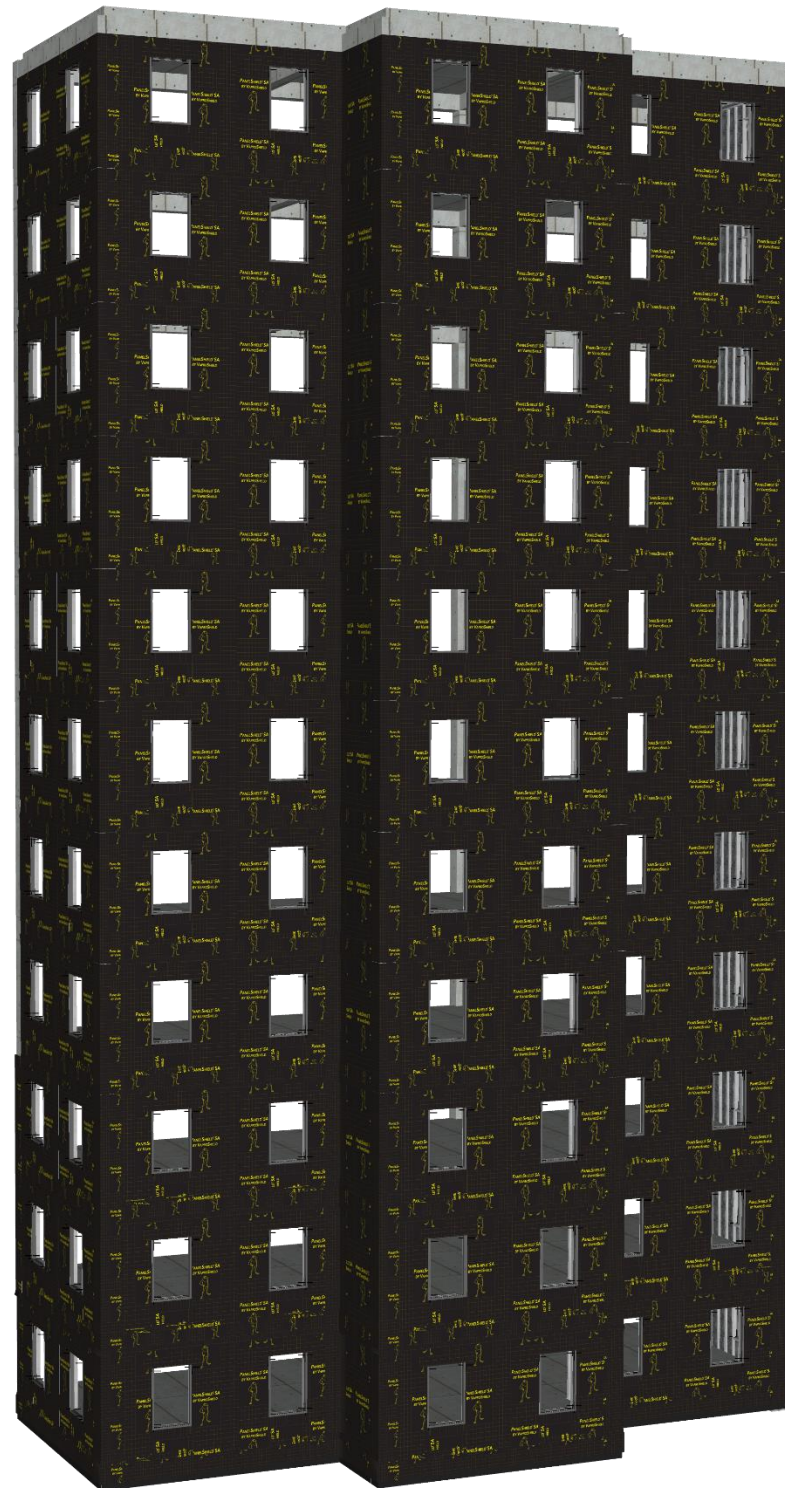
Panelized construction  
has no height  
constraints and saves  
time and labor

## DISCLAIMER

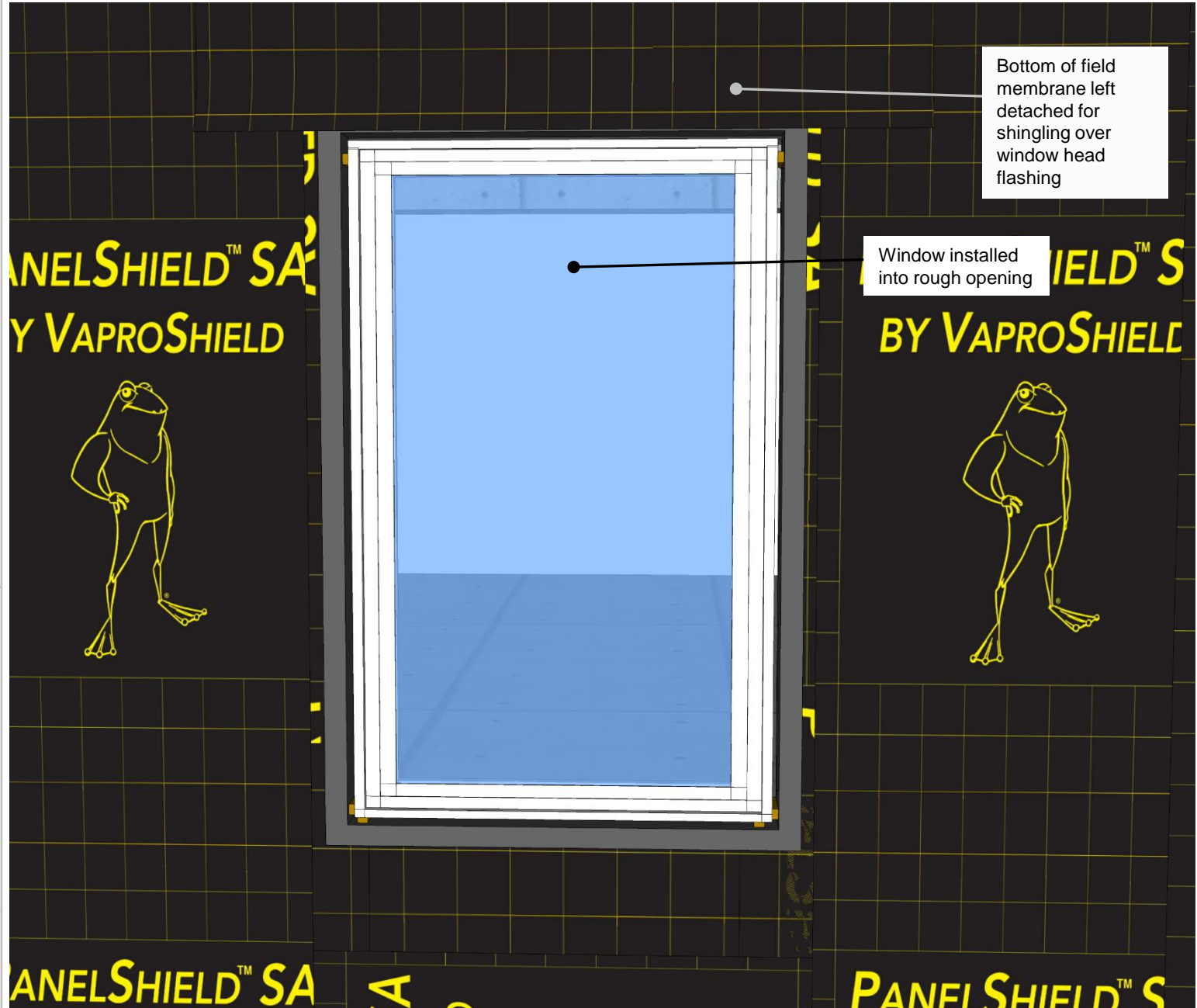
Detail sketch is generic, representing suggested best practices for VaproShield materials, and does not represent a specific job site condition and therefore may not be applicable to certain projects. Detail sketch is designed for use as a reference and must be approved by the designer/ consultant of record for each project prior to installation by the subcontractor. Changes and approvals of VaproShield details are the sole responsibility of the designer/consultant of record. VaproShield is **not** the designer of record for building enclosure details and takes no responsibility for the accuracy or interpretation of actual project site conditions.

Always check [www.VaproShield.com](http://www.VaproShield.com)  
for the latest details and installation  
instructions

VaproShield LLC  
915 26th Ave. N.W. Suite C5  
Gig Harbor, WA 98335  
Toll Free: 1.866.731.7663  
[www.VaproShield.com](http://www.VaproShield.com)  
© VaproShield 3/15/2016



Place windows into  
rough opening



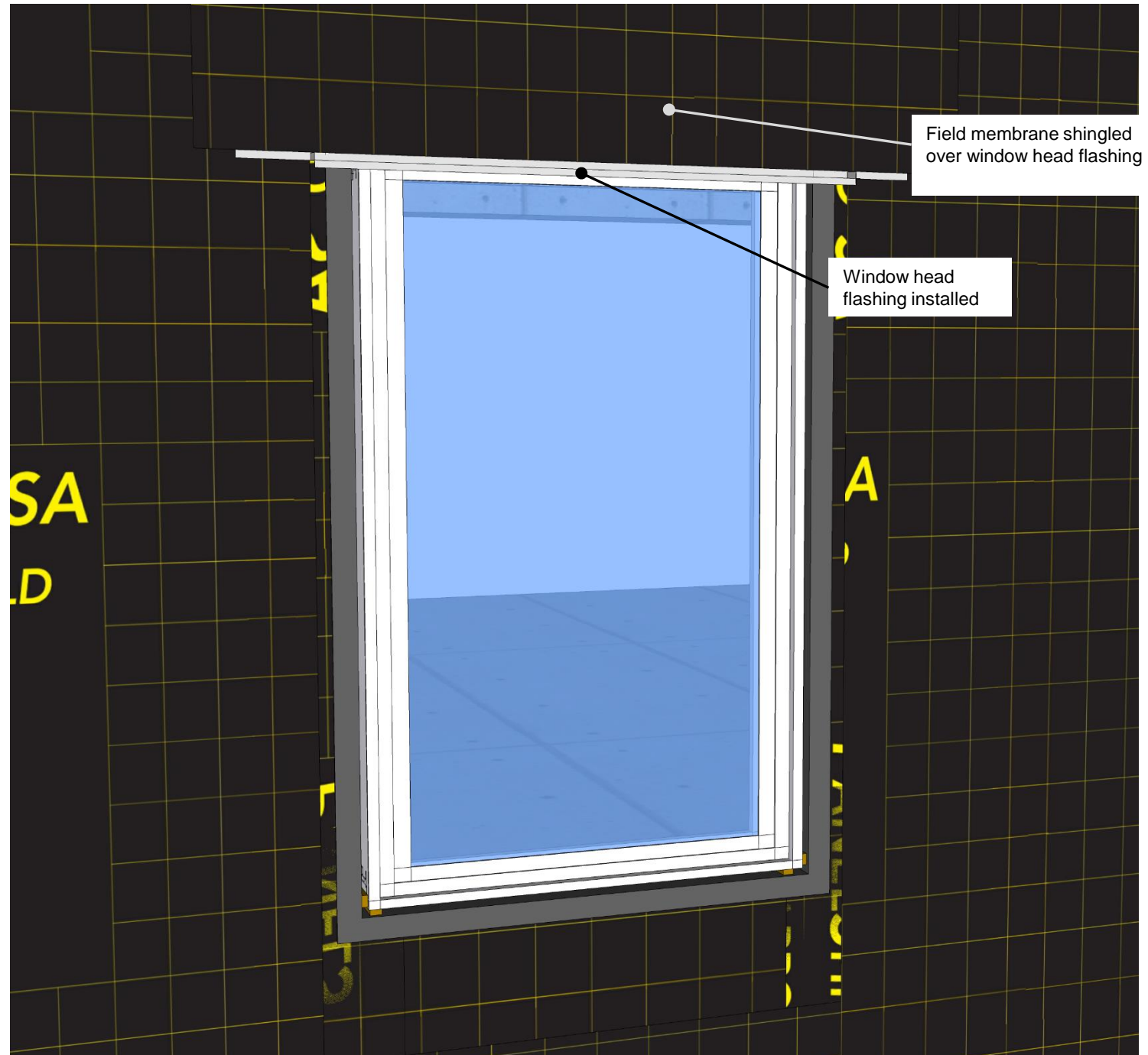
#### DISCLAIMER

Detail sketch is generic, representing suggested best practices for VaproShield materials, and does not represent a specific job site condition and therefore may not be applicable to certain projects. Detail sketch is designed for use as a reference and must be approved by the designer/ consultant of record for each project prior to installation by the subcontractor. Changes and approvals of VaproShield details are the sole responsibility of the designer/consultant of record. VaproShield is **not** the designer of record for building enclosure details and takes no responsibility for the accuracy or interpretation of actual project site conditions.

Always check [www.VaproShield.com](http://www.VaproShield.com)  
for the latest details and installation  
instructions



Install head flashing and  
shingle over with  
detached field  
membrane



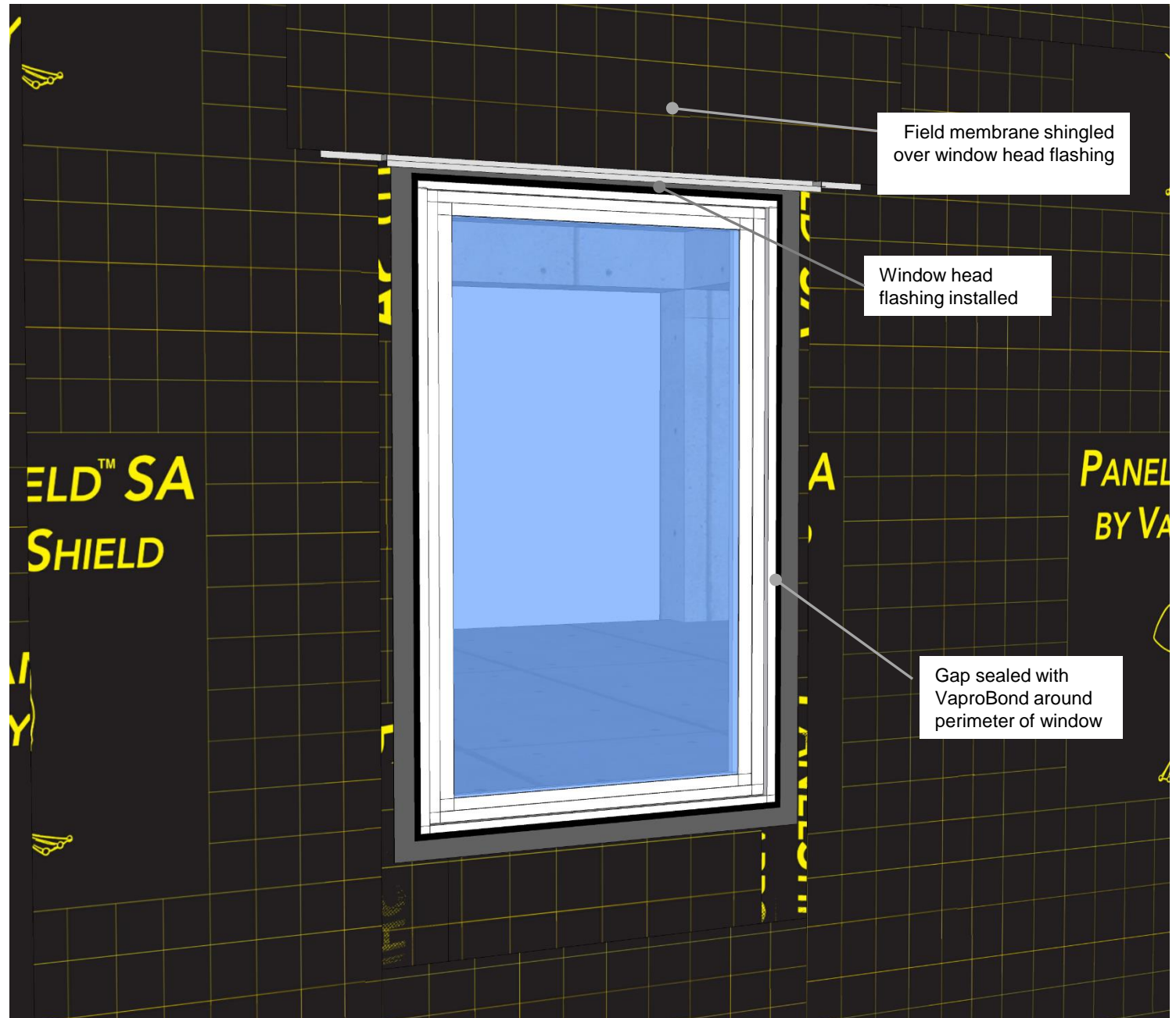
#### DISCLAIMER

Detail sketch is generic, representing suggested best practices for VaproShield materials, and does not represent a specific job site condition and therefore may not be applicable to certain projects. Detail sketch is designed for use as a reference and must be approved by the designer/ consultant of record for each project prior to installation by the subcontractor. Changes and approvals of VaproShield details are the sole responsibility of the designer/consultant of record. VaproShield is **not** the designer of record for building enclosure details and takes no responsibility for the accuracy or interpretation of actual project site conditions.

Always check [www.VaproShield.com](http://www.VaproShield.com)  
for the latest details and installation  
instructions

VaproShield LLC  
915 26th Ave. N.W. Suite C5  
Gig Harbor, WA 98335  
Toll Free: 1.866.731.7663  
[www.VaproShield.com](http://www.VaproShield.com)  
© VaproShield 3/15/2016

Fill in gap around  
window with VaproBond  
sealant



#### DISCLAIMER

Detail sketch is generic, representing suggested best practices for VaproShield materials, and does not represent a specific job site condition and therefore may not be applicable to certain projects. Detail sketch is designed for use as a reference and must be approved by the designer/ consultant of record for each project prior to installation by the subcontractor. Changes and approvals of VaproShield details are the sole responsibility of the designer/consultant of record. VaproShield is **not** the designer of record for building enclosure details and takes no responsibility for the accuracy or interpretation of actual project site conditions.

Always check [www.VaproShield.com](http://www.VaproShield.com)  
for the latest details and installation  
instructions