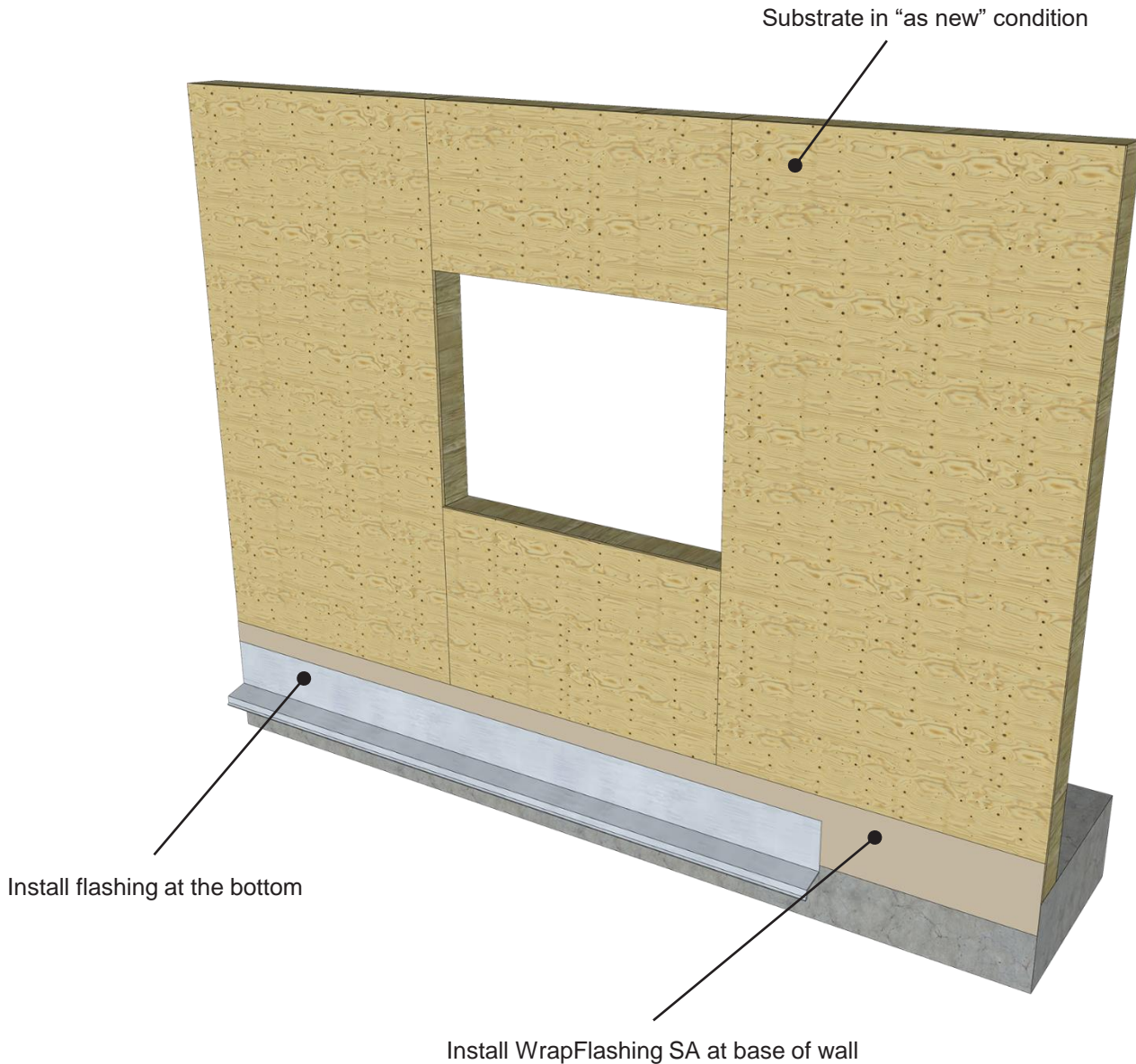


Step 1: RainScreen SA Window Flashing Sequence



RAINSCREEN SA™

PRODUCT DESCRIPTION

RainScreen SA (RSSA) is a self-adhered Air Barrier and WRB membrane with built-in rainscreen drainage matrix.

The factory-bonded drainage matrix (3mm or 7mm) creates an unimpeded vertical drainage plane behind the cladding.

DISCLAIMER

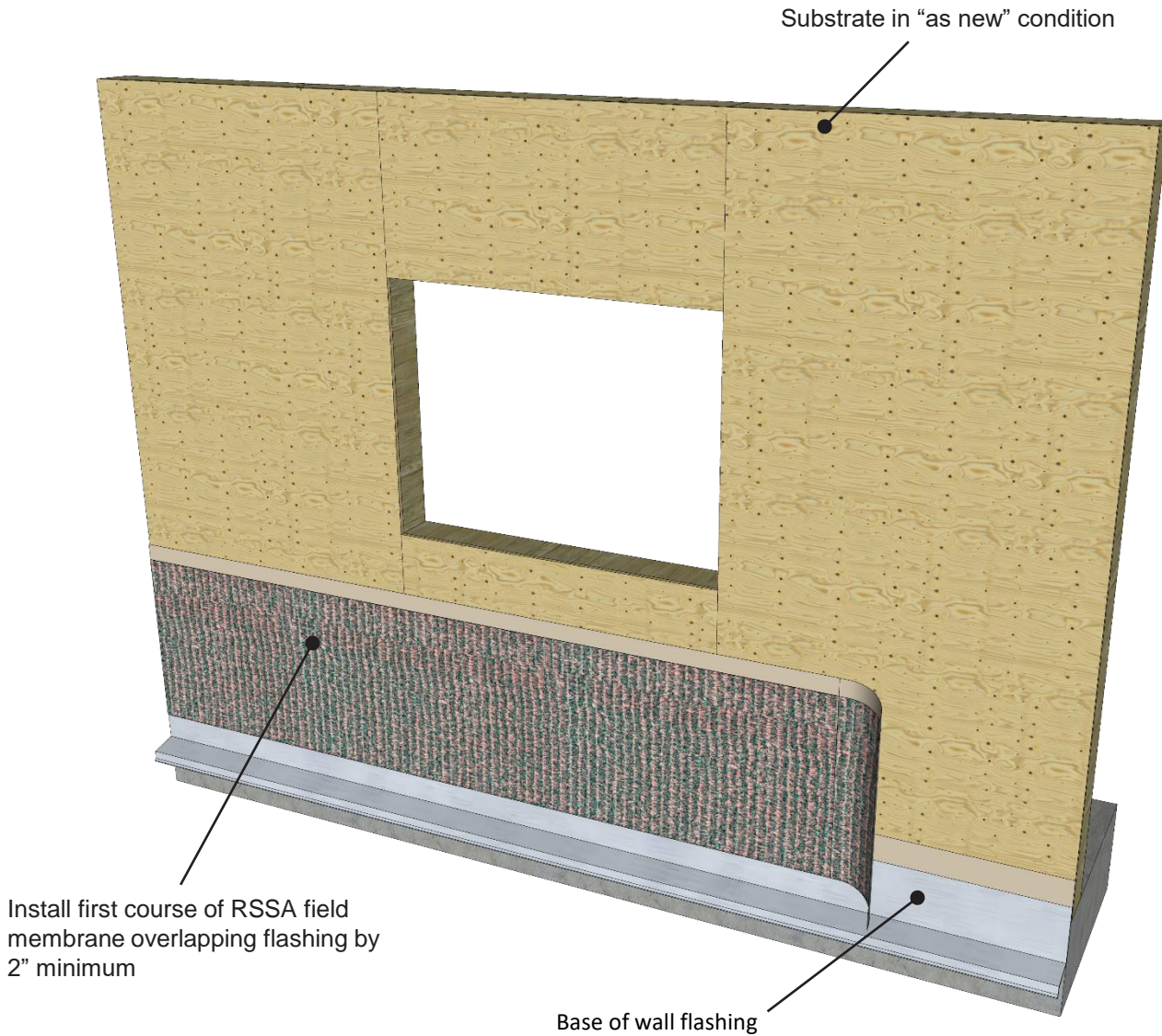
Detail sketch is generic, representing suggested best practices for VaproShield materials, and does not represent a specific job site condition and therefore may not be applicable to certain projects. Detail sketch is designed for use as a reference and must be approved by the designer/consultant of record for each project prior to installation by the subcontractor. Changes and approvals of VaproShield details are the sole responsibility of the designer/consultant of record. VaproShield is **not** the designer of record for building enclosure details and takes no responsibility for the accuracy or interpretation of actual project site conditions.

DRAWN BY: AR DATE: 3/29/24

REF: 258-1

Always check www.VaproShield.com for the latest details and installation instructions

Step 2: RainScreen SA Window Flashing Sequence



RAINSCREEN SA™

PRODUCT DESCRIPTION

RainScreen SA (RSSA) is a self-adhered Air Barrier and WRB membrane with built-in rainscreen drainage matrix.

The factory-bonded drainage matrix (3mm or 7mm) creates an unimpeded vertical drainage plane behind the cladding.

DISCLAIMER

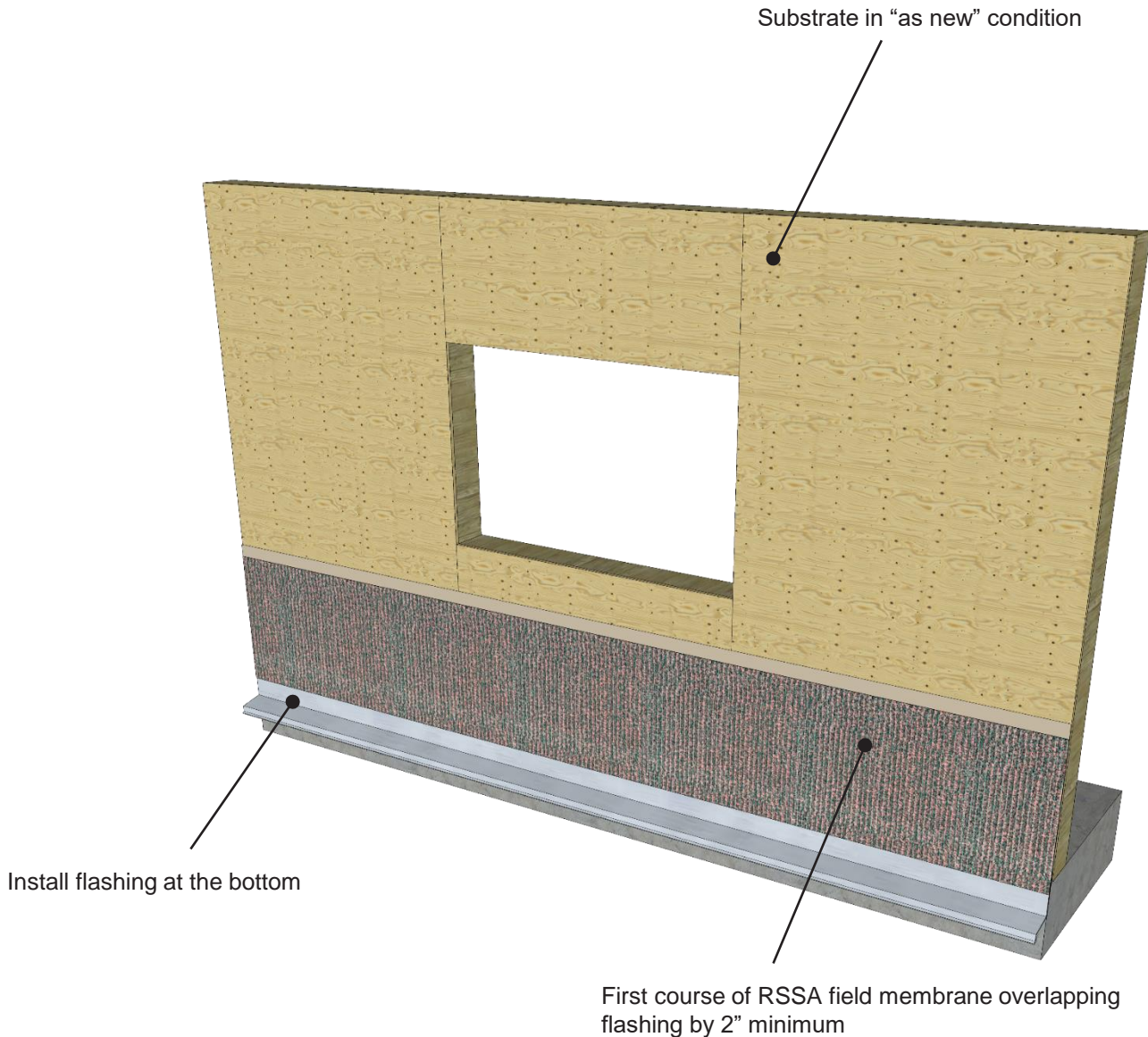
Detail sketch is generic, representing suggested best practices for VaproShield materials, and does not represent a specific job site condition and therefore may not be applicable to certain projects. Detail sketch is designed for use as a reference and must be approved by the designer/ consultant of record for each project prior to installation by the subcontractor. Changes and approvals of VaproShield details are the sole responsibility of the designer/consultant of record. VaproShield is **not** the designer of record for building enclosure details and takes no responsibility for the accuracy or interpretation of actual project site conditions.

DRAWN BY: AR DATE: 3/29/24

REF: 258-2

Always check www.VaproShield.com for the latest details and installation instructions

Step 3: RainScreen SA Window Flashing Sequence



RAINSCREEN SA™

PRODUCT DESCRIPTION

RainScreen SA (RSSA) is a self-adhered Air Barrier and WRB membrane with built-in rainscreen drainage matrix.

The factory-bonded drainage matrix (3mm or 7mm) creates an unimpeded vertical drainage plane behind the cladding.

DISCLAIMER

Detail sketch is generic, representing suggested best practices for VaproShield materials, and does not represent a specific job site condition and therefore may not be applicable to certain projects. Detail sketch is designed for use as a reference and must be approved by the designer/consultant of record for each project prior to installation by the subcontractor. Changes and approvals of VaproShield details are the sole responsibility of the designer/consultant of record. VaproShield is **not** the designer of record for building enclosure details and takes no responsibility for the accuracy or interpretation of actual project site conditions.

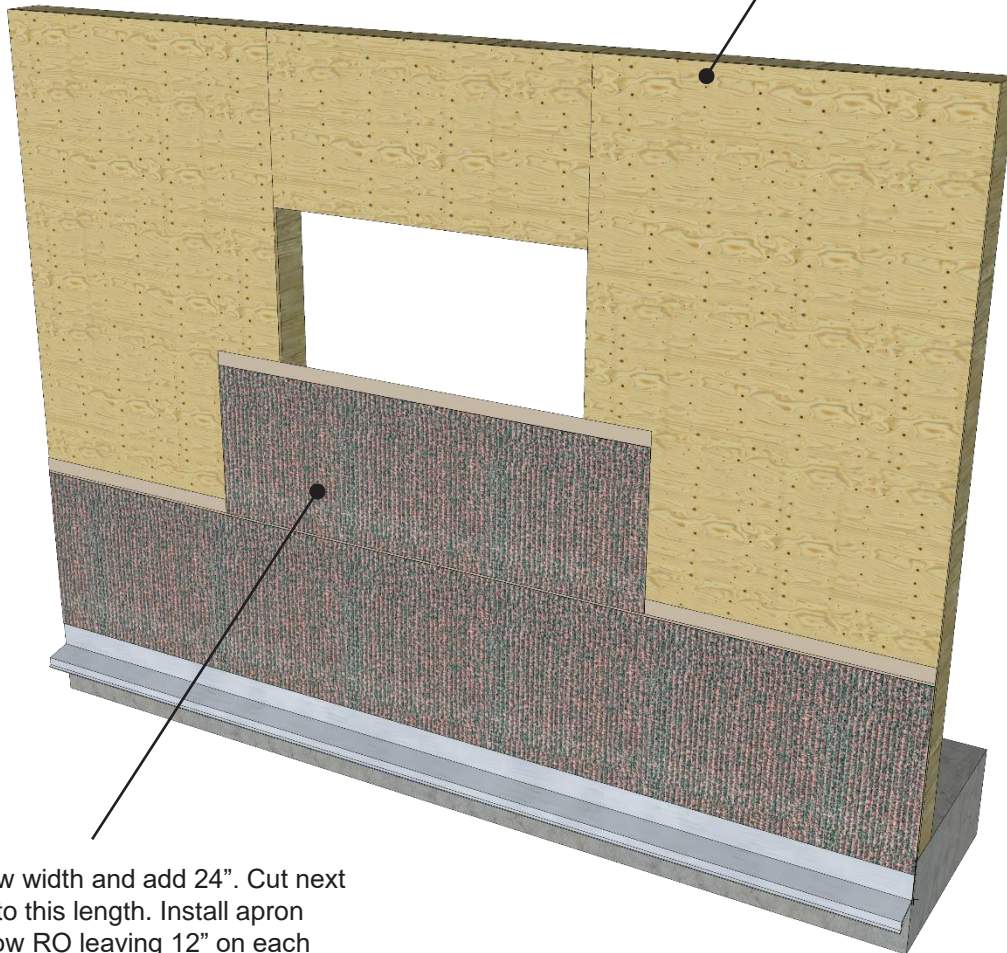
DRAWN BY: AR DATE: 3/29/24

REF: 258-3

Always check www.VaproShield.com for the latest details and installation instructions

Step 4: RainScreen SA Window Flashing Sequence

Substrate in “as new” condition



Measure window width and add 24". Cut next piece of RSSA to this length. Install apron piece into window RO leaving 12" on each side.

RAINSCREEN SA™

PRODUCT DESCRIPTION

RainScreen SA (RSSA) is a self-adhered Air Barrier and WRB membrane with built-in rainscreen drainage matrix.

The factory-bonded drainage matrix (3mm or 7mm) creates an unimpeded vertical drainage plane behind the cladding.

DISCLAIMER

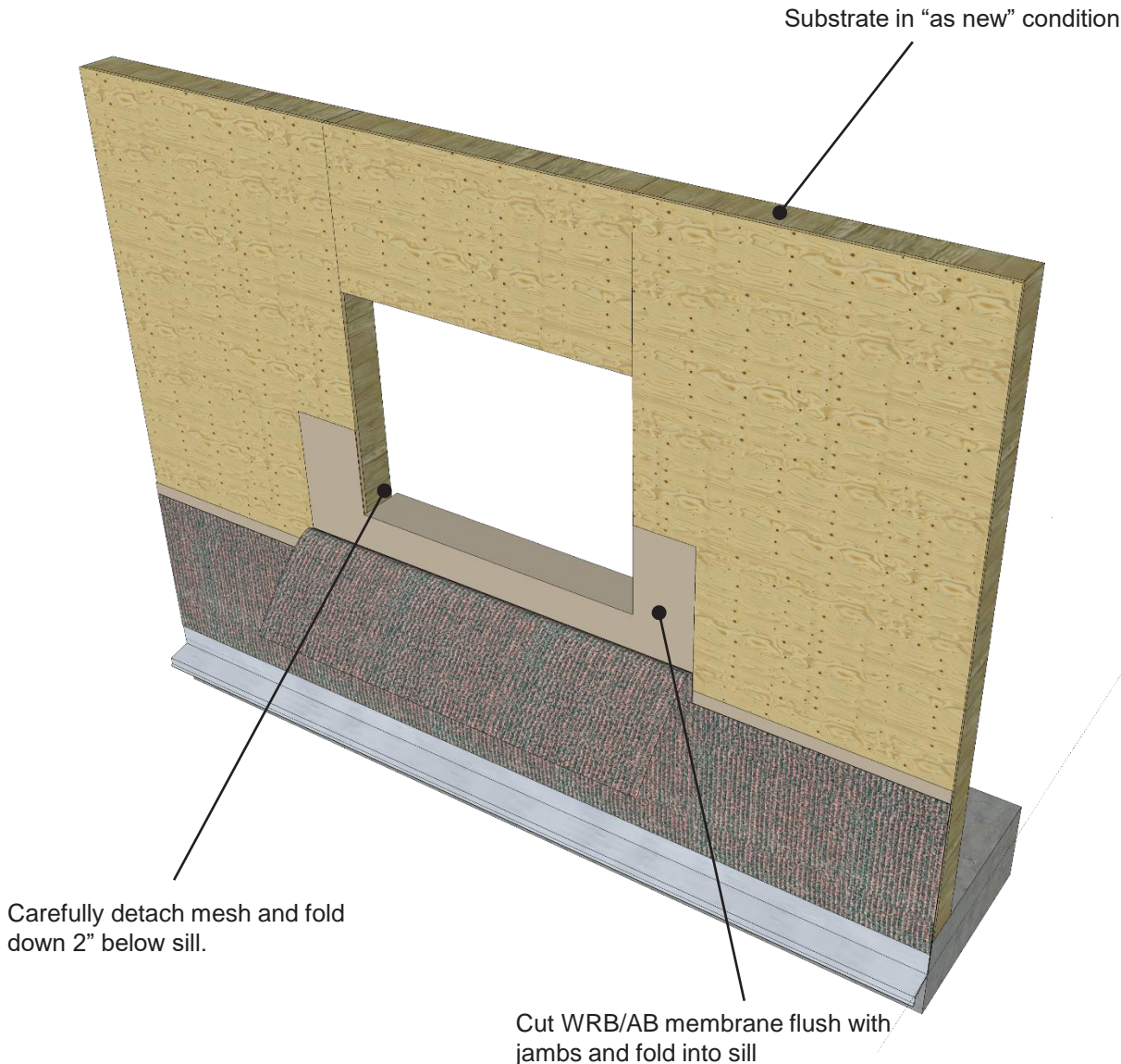
Detail sketch is generic, representing suggested best practices for VaproShield materials, and does not represent a specific job site condition and therefore may not be applicable to certain projects. Detail sketch is designed for use as a reference and must be approved by the designer/consultant of record for each project prior to installation by the subcontractor. Changes and approvals of VaproShield details are the sole responsibility of the designer/consultant of record. VaproShield is **not** the designer of record for building enclosure details and takes no responsibility for the accuracy or interpretation of actual project site conditions.

DRAWN BY: AR DATE: 3/29/24

REF: 258-4

Always check www.VaproShield.com for the latest details and installation instructions

Step 5: RainScreen SA Window Flashing Sequence



RAINSCREEN SA™

PRODUCT DESCRIPTION

RainScreen SA (RSSA) is a self-adhered Air Barrier and WRB membrane with built-in rainscreen drainage matrix.

The factory-bonded drainage matrix (3mm or 7mm) creates an unimpeded vertical drainage plane behind the cladding.

DISCLAIMER

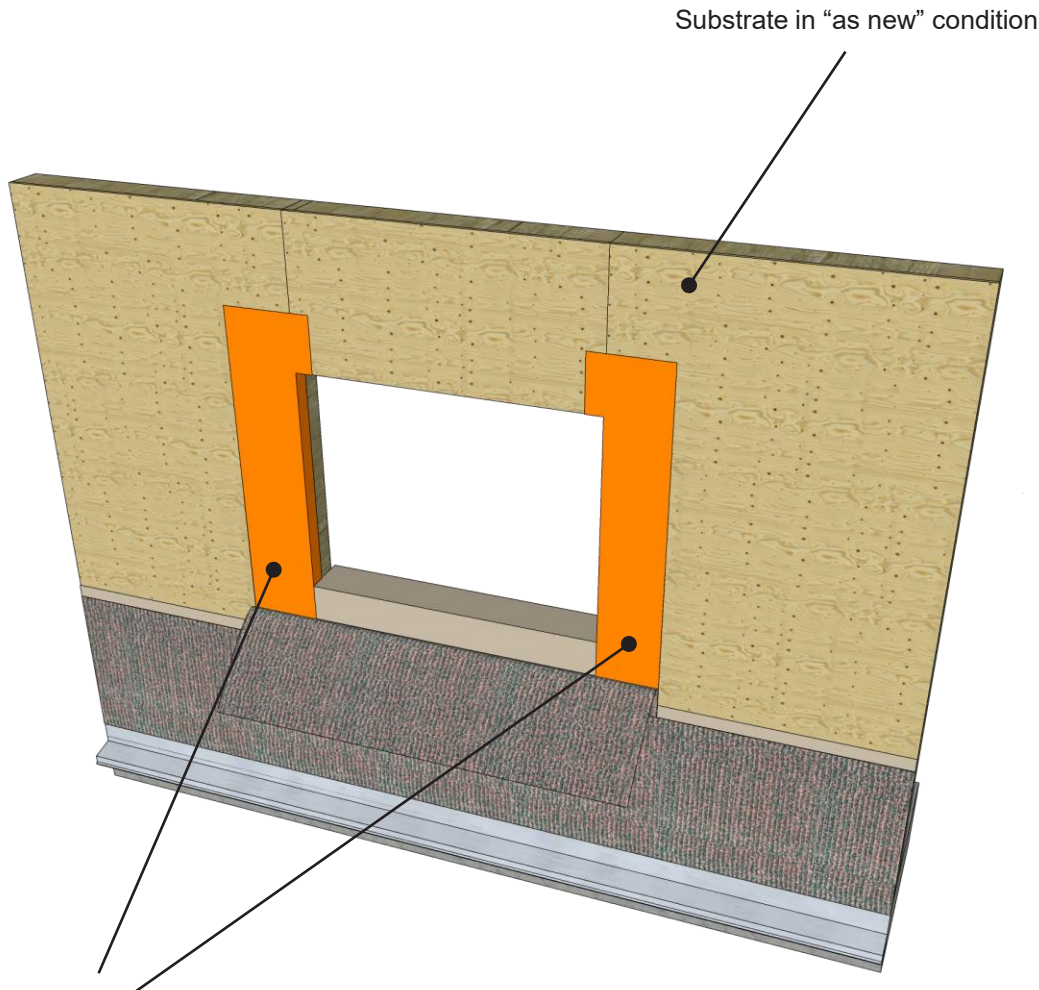
Detail sketch is generic, representing suggested best practices for VaproShield materials, and does not represent a specific job site condition and therefore may not be applicable to certain projects. Detail sketch is designed for use as a reference and must be approved by the designer/ consultant of record for each project prior to installation by the subcontractor. Changes and approvals of VaproShield details are the sole responsibility of the designer/consultant of record. VaproShield is **not** the designer of record for building enclosure details and takes no responsibility for the accuracy or interpretation of actual project site conditions.

DRAWN BY: AR DATE: 3/29/24

REF: 258-5

Always check www.VaproShield.com for the latest details and installation instructions

Step 6: RainScreen SA Window Flashing Sequence



Install WrapFlashing SA at jambs as shown.
Cut at sill and head then fold into RO.

RAINSCREEN SA™

PRODUCT DESCRIPTION

RainScreen SA (RSSA) is a self-adhered Air Barrier and WRB membrane with built-in rainscreen drainage matrix.

The factory-bonded drainage matrix (3mm or 7mm) creates an unimpeded vertical drainage plane behind the cladding.

DISCLAIMER

Detail sketch is generic, representing suggested best practices for VaproShield materials, and does not represent a specific job site condition and therefore may not be applicable to certain projects. Detail sketch is designed for use as a reference and must be approved by the designer/ consultant of record for each project prior to installation by the subcontractor. Changes and approvals of VaproShield details are the sole responsibility of the designer/consultant of record. VaproShield is **not** the designer of record for building enclosure details and takes no responsibility for the accuracy or interpretation of actual project site conditions.

DRAWN BY: AR DATE: 3/29/24

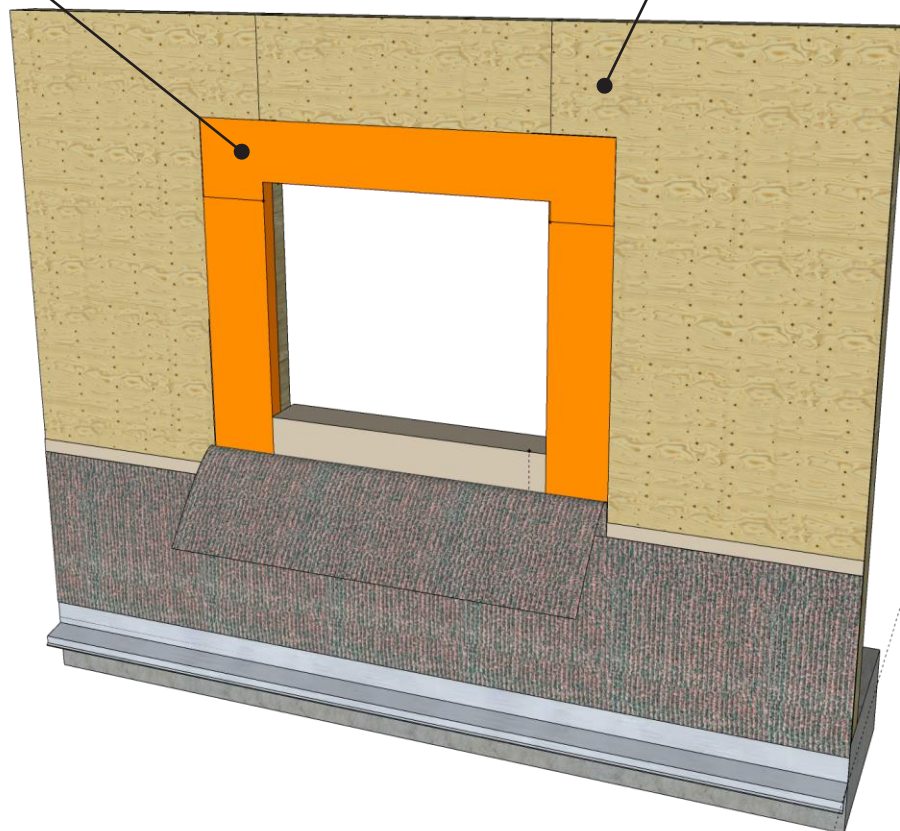
REF: 258-6

Always check www.VaproShield.com for the latest details and installation instructions

Step 7: RainScreen SA Window Flashing Sequence

Install WrapFlashing SA at head as shown. Cut at jambs then fold into RO.

Substrate in "as new" condition



RAINSCREEN SA™

PRODUCT DESCRIPTION

RainScreen SA (RSSA) is a self-adhered Air Barrier and WRB membrane with built-in rainscreen drainage matrix.

The factory-bonded drainage matrix (3mm or 7mm) creates an unimpeded vertical drainage plane behind the cladding.

DISCLAIMER

Detail sketch is generic, representing suggested best practices for VaproShield materials, and does not represent a specific job site condition and therefore may not be applicable to certain projects. Detail sketch is designed for use as a reference and must be approved by the designer/consultant of record for each project prior to installation by the subcontractor. Changes and approvals of VaproShield details are the sole responsibility of the designer/consultant of record. VaproShield is **not** the designer of record for building enclosure details and takes no responsibility for the accuracy or interpretation of actual project site conditions.

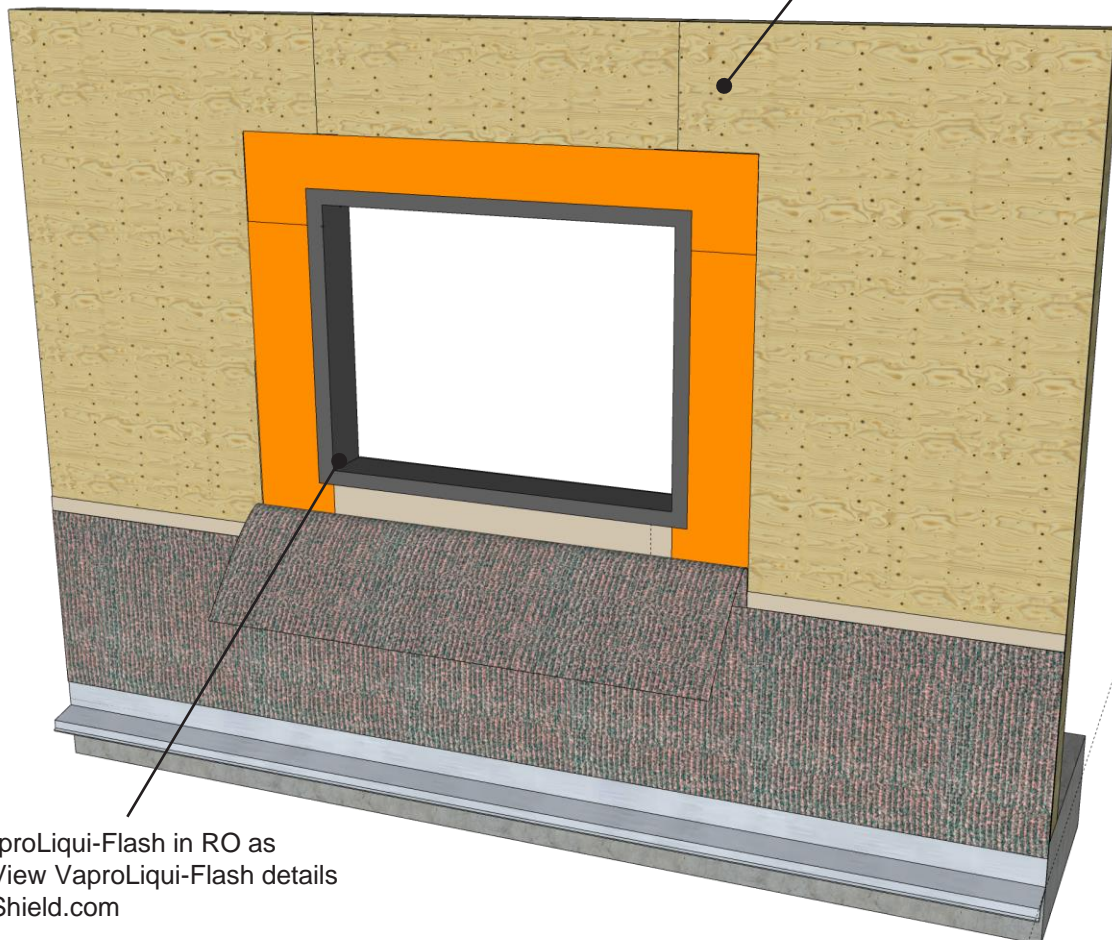
DRAWN BY: AR DATE: 3/29/24

REF: 258-7

Always check www.VaproShield.com for the latest details and installation instructions

Step 8: RainScreen SA Window Flashing Sequence

Substrate in “as new” condition



Install VaproLiqui-Flash in RO as shown. (View VaproLiqui-Flash details at VaproShield.com)

RAINSCREEN SA™

PRODUCT DESCRIPTION

RainScreen SA (RSSA) is a self-adhered Air Barrier and WRB membrane with built-in rainscreen drainage matrix.

The factory-bonded drainage matrix (3mm or 7mm) creates an unimpeded vertical drainage plane behind the cladding.

DISCLAIMER

Detail sketch is generic, representing suggested best practices for VaproShield materials, and does not represent a specific job site condition and therefore may not be applicable to certain projects. Detail sketch is designed for use as a reference and must be approved by the designer/consultant of record for each project prior to installation by the subcontractor. Changes and approvals of VaproShield details are the sole responsibility of the designer/consultant of record. VaproShield is **not** the designer of record for building enclosure details and takes no responsibility for the accuracy or interpretation of actual project site conditions.

DRAWN BY: AR

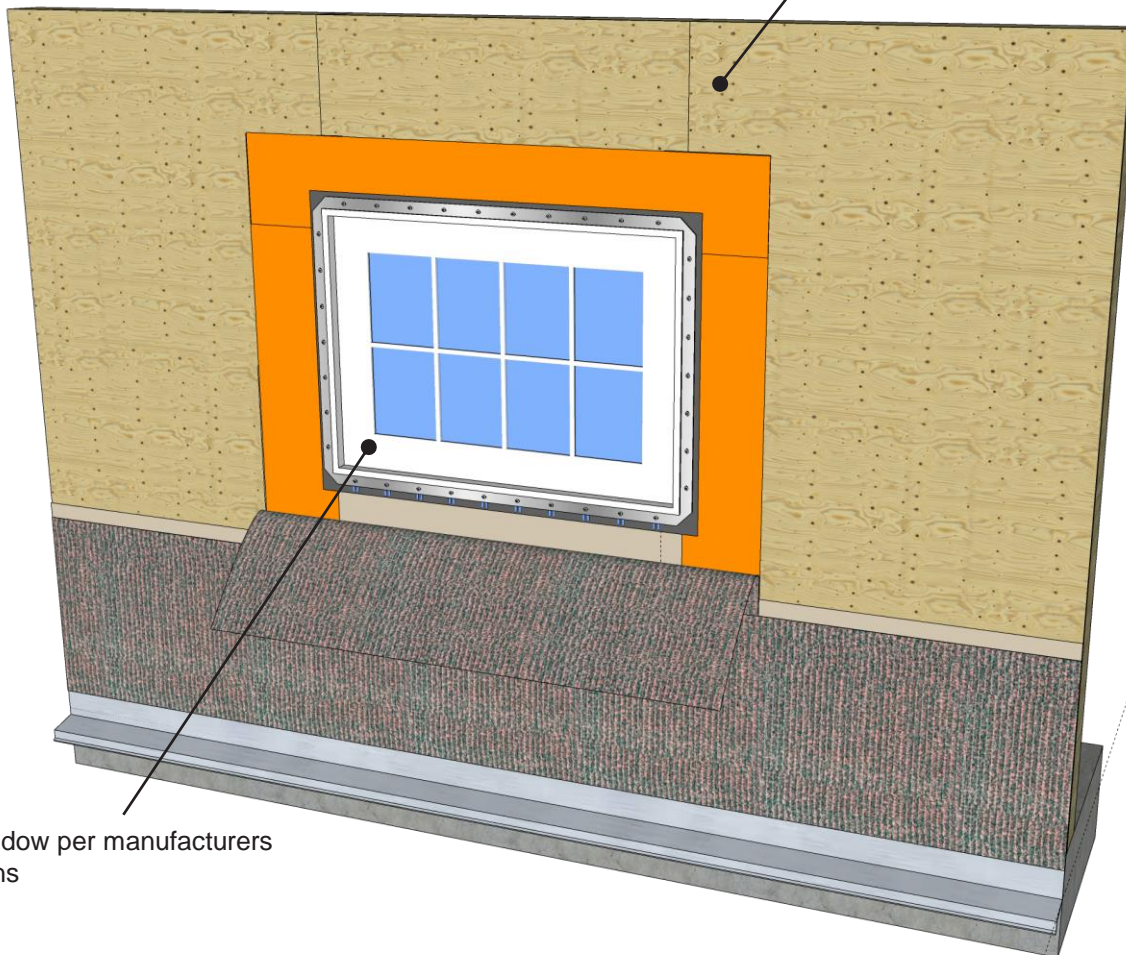
DATE: 3/29/24

REF: 258-8

Always check www.VaproShield.com for the latest details and installation instructions

Step 9: RainScreen SA Window Flashing Sequence

Substrate in "as new" condition



Install window per manufacturers
instructions

RAINSCREEN SA™

PRODUCT DESCRIPTION

RainScreen SA (RSSA) is a self-adhered Air Barrier and WRB membrane with built-in rainscreen drainage matrix.

The factory-bonded drainage matrix (3mm or 7mm) creates an unimpeded vertical drainage plane behind the cladding.

DISCLAIMER

Detail sketch is generic, representing suggested best practices for VaproShield materials, and does not represent a specific job site condition and therefore may not be applicable to certain projects. Detail sketch is designed for use as a reference and must be approved by the designer/consultant of record for each project prior to installation by the subcontractor. Changes and approvals of VaproShield details are the sole responsibility of the designer/consultant of record. VaproShield is **not** the designer of record for building enclosure details and takes no responsibility for the accuracy or interpretation of actual project site conditions.

DRAWN BY: AR

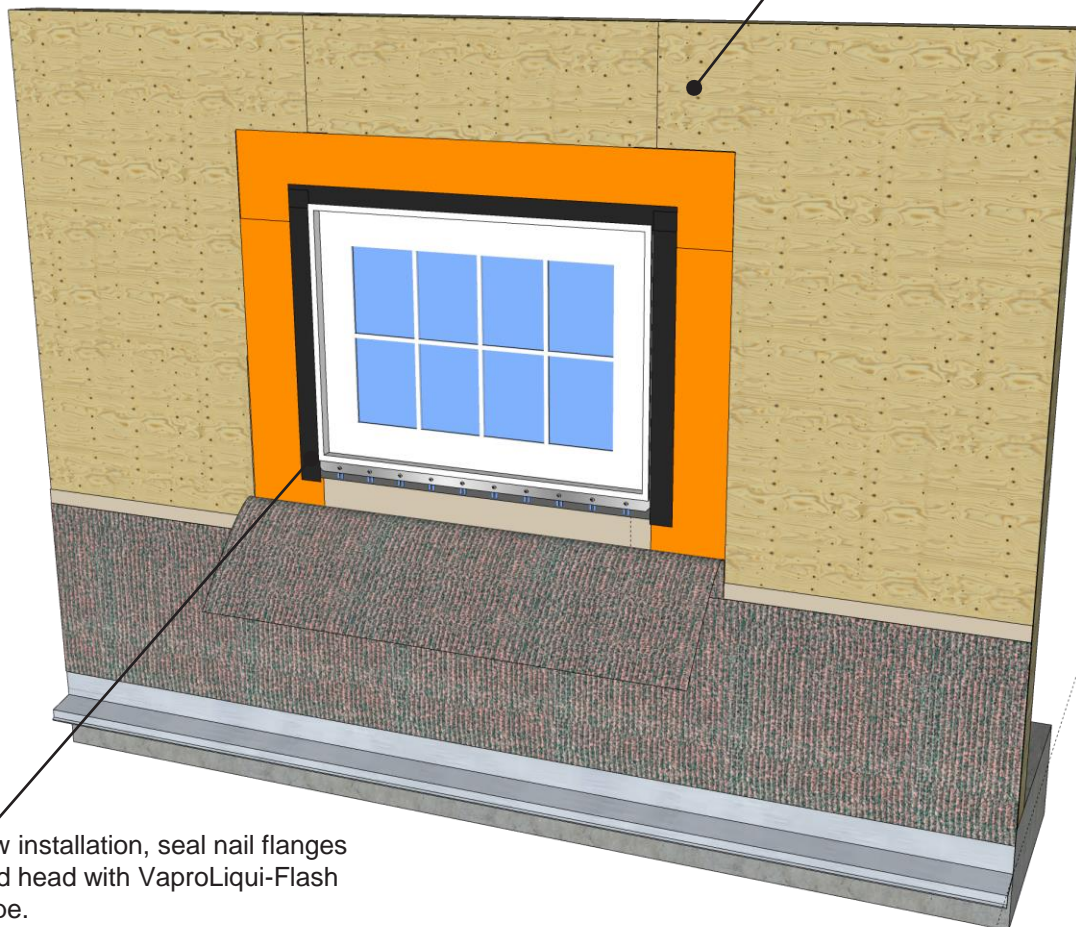
DATE: 3/29/24

REF: 258-9

Always check www.VaproShield.com for the latest details and installation instructions

Step 10: RainScreen SA Window Flashing Sequence

Substrate in “as new” condition



After window installation, seal nail flanges at jambs and head with VaproLiqui-Flash or VaproTape.

RAINSCREEN SA™

PRODUCT DESCRIPTION

RainScreen SA (RSSA) is a self-adhered Air Barrier and WRB membrane with built-in rainscreen drainage matrix.

The factory-bonded drainage matrix (3mm or 7mm) creates an unimpeded vertical drainage plane behind the cladding.

DISCLAIMER

Detail sketch is generic, representing suggested best practices for VaproShield materials, and does not represent a specific job site condition and therefore may not be applicable to certain projects. Detail sketch is designed for use as a reference and must be approved by the designer/ consultant of record for each project prior to installation by the subcontractor. Changes and approvals of VaproShield details are the sole responsibility of the designer/consultant of record. VaproShield is **not** the designer of record for building enclosure details and takes no responsibility for the accuracy or interpretation of actual project site conditions.

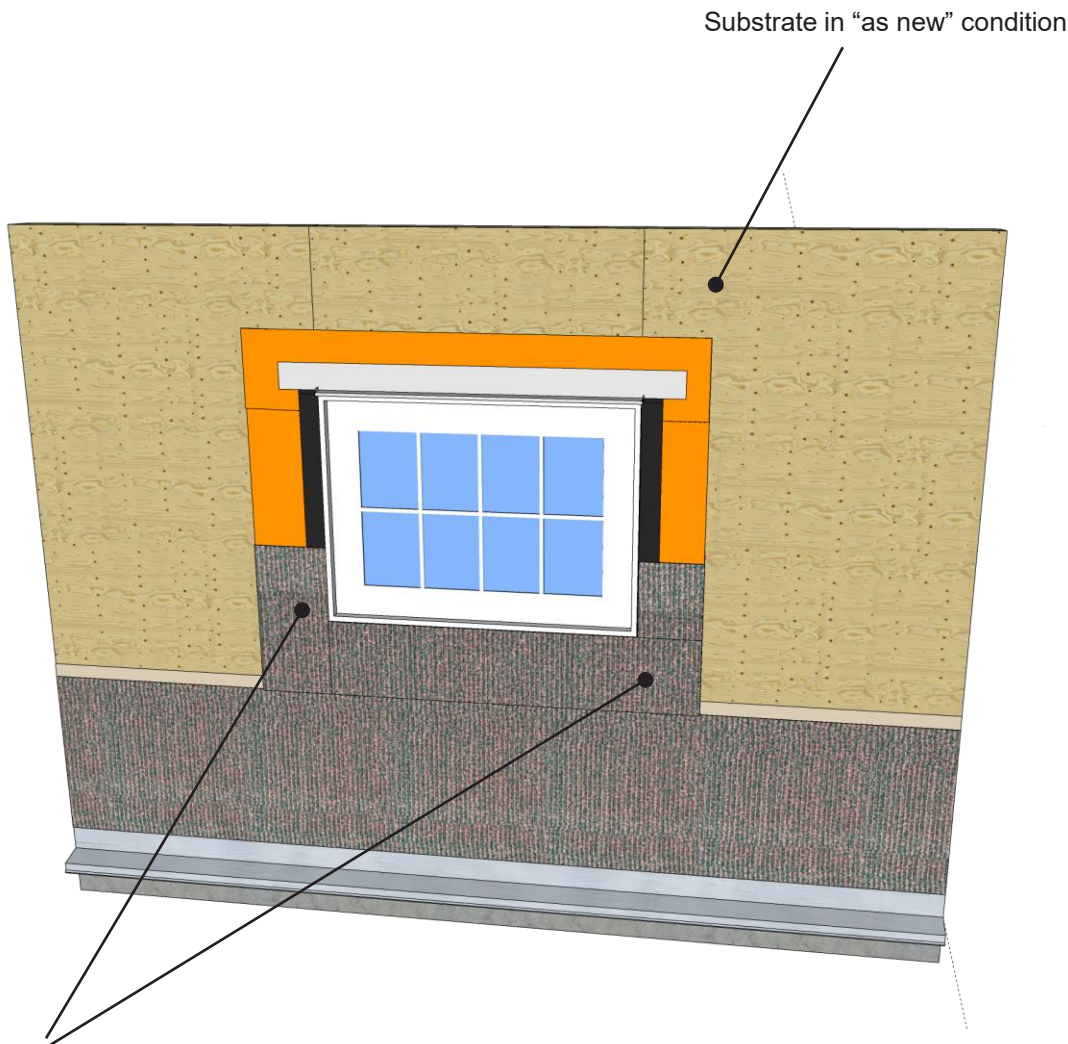
DRAWN BY: AR

DATE: 3/29/24

REF: 258-10

Always check www.VaproShield.com for the latest details and installation instructions

Step 11: RainScreen SA Window Flashing Sequence



Fold drainage mesh back onto wall trimming around window frame. Tack mesh in place with stapler or hammertacker.

RAINSCREEN SA™

PRODUCT DESCRIPTION

RainScreen SA (RSSA) is a self-adhered Air Barrier and WRB membrane with built-in rainscreen drainage matrix.

The factory-bonded drainage matrix (3mm or 7mm) creates an unimpeded vertical drainage plane behind the cladding.

DISCLAIMER

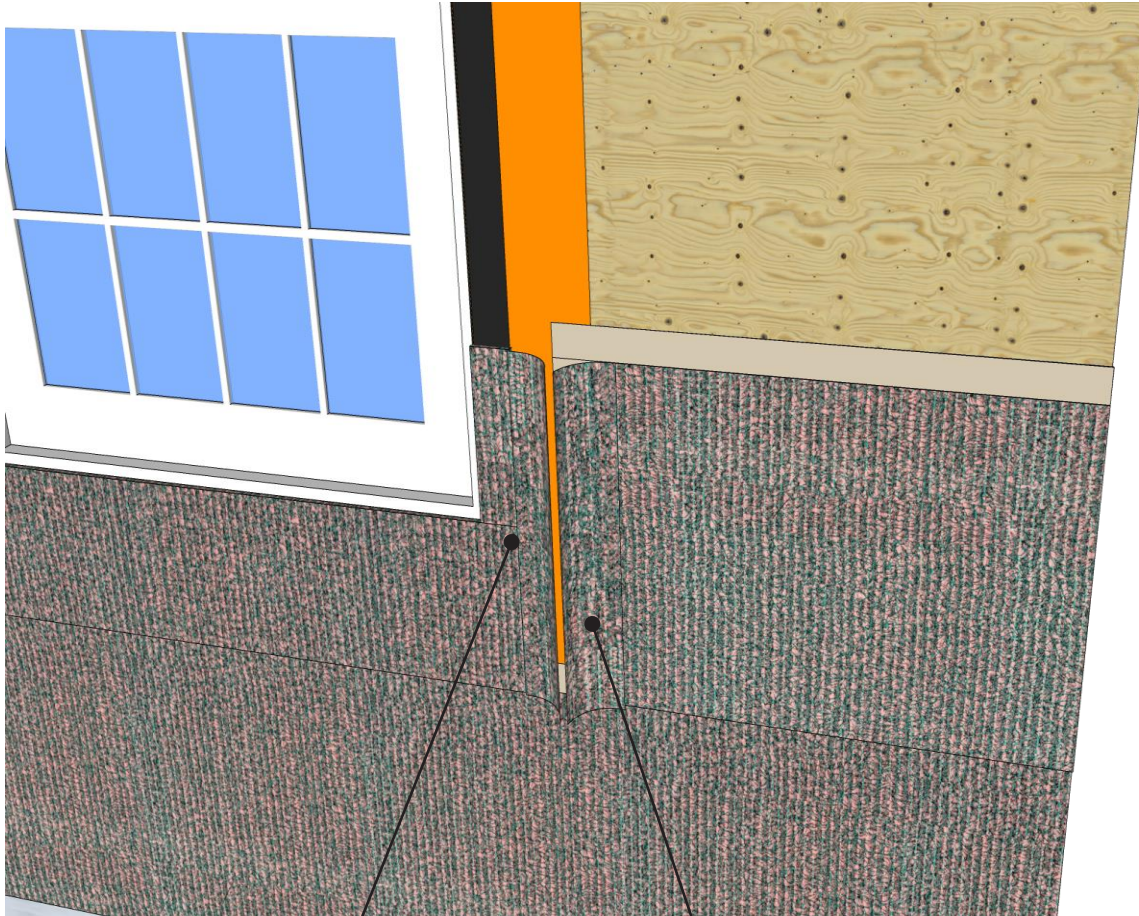
Detail sketch is generic, representing suggested best practices for VaproShield materials, and does not represent a specific job site condition and therefore may not be applicable to certain projects. Detail sketch is designed for use as a reference and must be approved by the designer/ consultant of record for each project prior to installation by the subcontractor. Changes and approvals of VaproShield details are the sole responsibility of the designer/consultant of record. VaproShield is **not** the designer of record for building enclosure details and takes no responsibility for the accuracy or interpretation of actual project site conditions.

DRAWN BY: AR DATE: 3/29/24

REF: 258-11

Always check www.VaproShield.com for the latest details and installation instructions

Step 12: RainScreen SA Window Flashing Sequence



Install adjacent field pieces of RSSA membrane.

Pull mesh back and overlap WRB/AB a minimum of 3".

RAINSCREEN SA™

PRODUCT DESCRIPTION

RainScreen SA (RSSA) is a self-adhered Air Barrier and WRB membrane with built-in rainscreen drainage matrix.

The factory-bonded drainage matrix (3mm or 7mm) creates an unimpeded vertical drainage plane behind the cladding.

DISCLAIMER

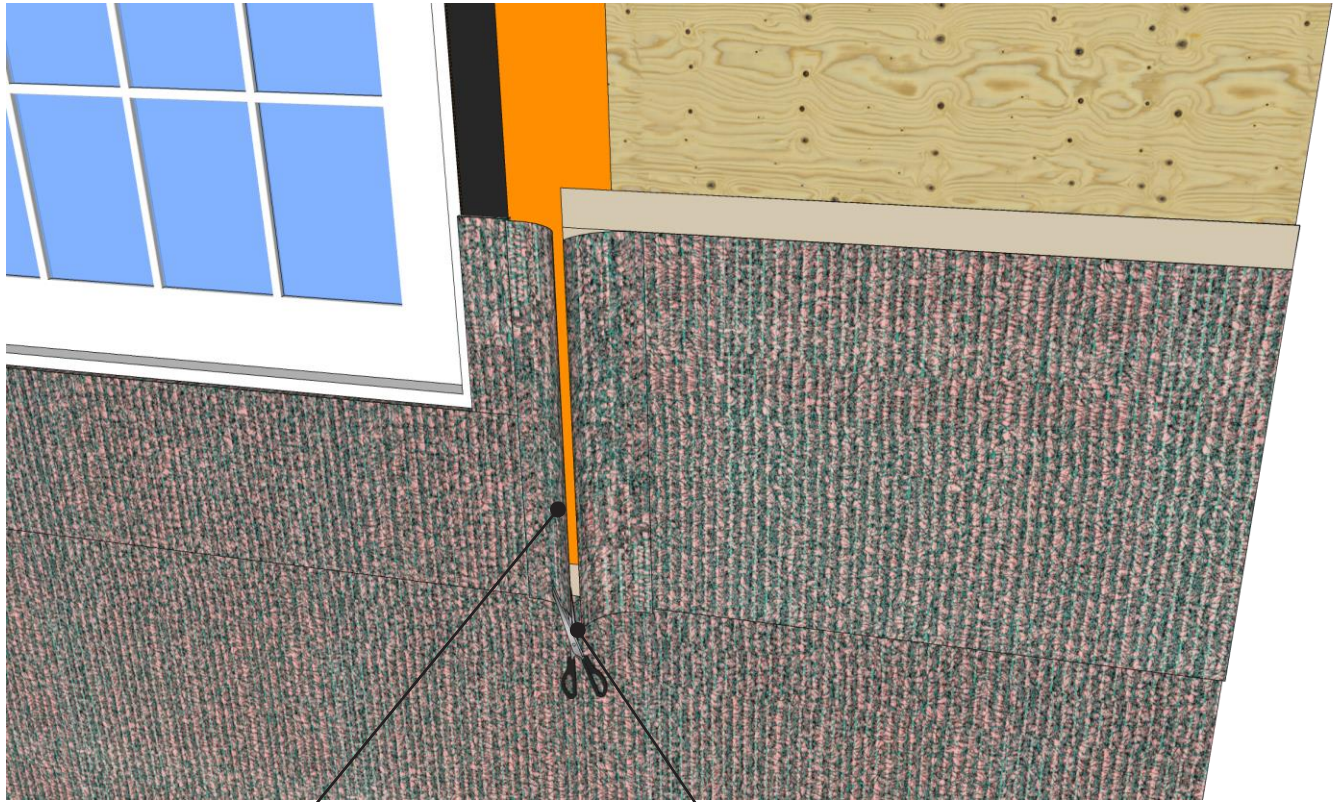
Detail sketch is generic, representing suggested best practices for VaproShield materials, and does not represent a specific job site condition and therefore may not be applicable to certain projects. Detail sketch is designed for use as a reference and must be approved by the designer/consultant of record for each project prior to installation by the subcontractor. Changes and approvals of VaproShield details are the sole responsibility of the designer/consultant of record. VaproShield is **not** the designer of record for building enclosure details and takes no responsibility for the accuracy or interpretation of actual project site conditions.

DRAWN BY: AR DATE: 3/29/24

REF: 258-12

Always check www.VaproShield.com for the latest details and installation instructions

Step 13: RainScreen SA Window Flashing Sequence



Tack mesh back in place after cutting with stapler or hammertacker.

Overlap mesh from each side and cut both layers of mesh at the same time.

RAINSCREEN SA™

PRODUCT DESCRIPTION

RainScreen SA (RSSA) is a self-adhered Air Barrier and WRB membrane with built-in rainscreen drainage matrix.

The factory-bonded drainage matrix (3mm or 7mm) creates an unimpeded vertical drainage plane behind the cladding.

DISCLAIMER

Detail sketch is generic, representing suggested best practices for VaproShield materials, and does not represent a specific job site condition and therefore may not be applicable to certain projects. Detail sketch is designed for use as a reference and must be approved by the designer/consultant of record for each project prior to installation by the subcontractor. Changes and approvals of VaproShield details are the sole responsibility of the designer/consultant of record. VaproShield is **not** the designer of record for building enclosure details and takes no responsibility for the accuracy or interpretation of actual project site conditions.

DRAWN BY: AR DATE: 3/29/24

REF: 258-13

Always check www.VaproShield.com for the latest details and installation instructions

Step 14: RainScreen SA Window Flashing Sequence

Install metal head flashing with end dams, (by others)



RAINSCREEN SA™

PRODUCT DESCRIPTION

RainScreen SA (RSSA) is a self-adhered Air Barrier and WRB membrane with built-in rainscreen drainage matrix.

The factory-bonded drainage matrix (3mm or 7mm) creates an unimpeded vertical drainage plane behind the cladding.

DISCLAIMER

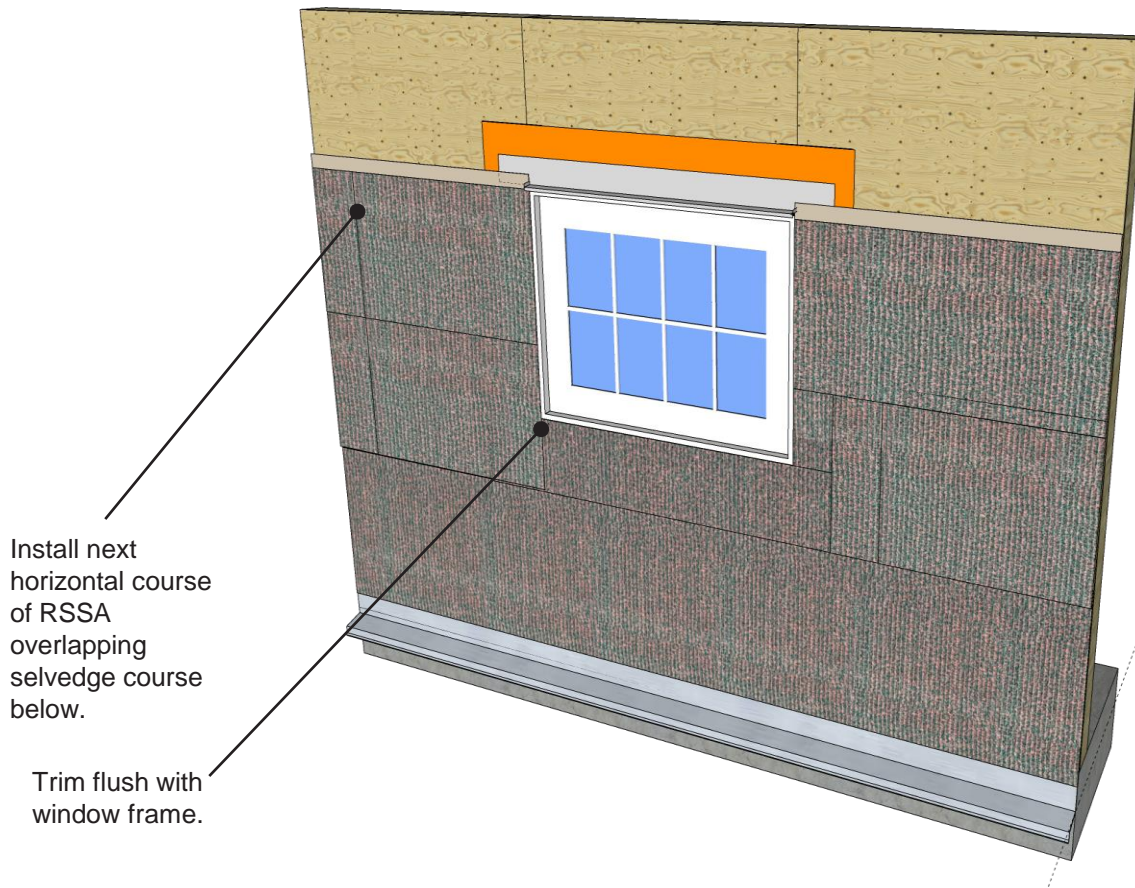
Detail sketch is generic, representing suggested best practices for VaproShield materials, and does not represent a specific job site condition and therefore may not be applicable to certain projects. Detail sketch is designed for use as a reference and must be approved by the designer/ consultant of record for each project prior to installation by the subcontractor. Changes and approvals of VaproShield details are the sole responsibility of the designer/consultant of record. VaproShield is **not** the designer of record for building enclosure details and takes no responsibility for the accuracy or interpretation of actual project site conditions.

DRAWN BY: AR DATE: 3/29/24

REF: 258-14

Always check www.VaproShield.com for the latest details and installation instructions

Step 15: RainScreen SA Window Flashing Sequence



RAINSCREEN SA™

PRODUCT DESCRIPTION

RainScreen SA (RSSA) is a self-adhered Air Barrier and WRB membrane with built-in rainscreen drainage matrix.

The factory-bonded drainage matrix (3mm or 7mm) creates an unimpeded vertical drainage plane behind the cladding.

DISCLAIMER

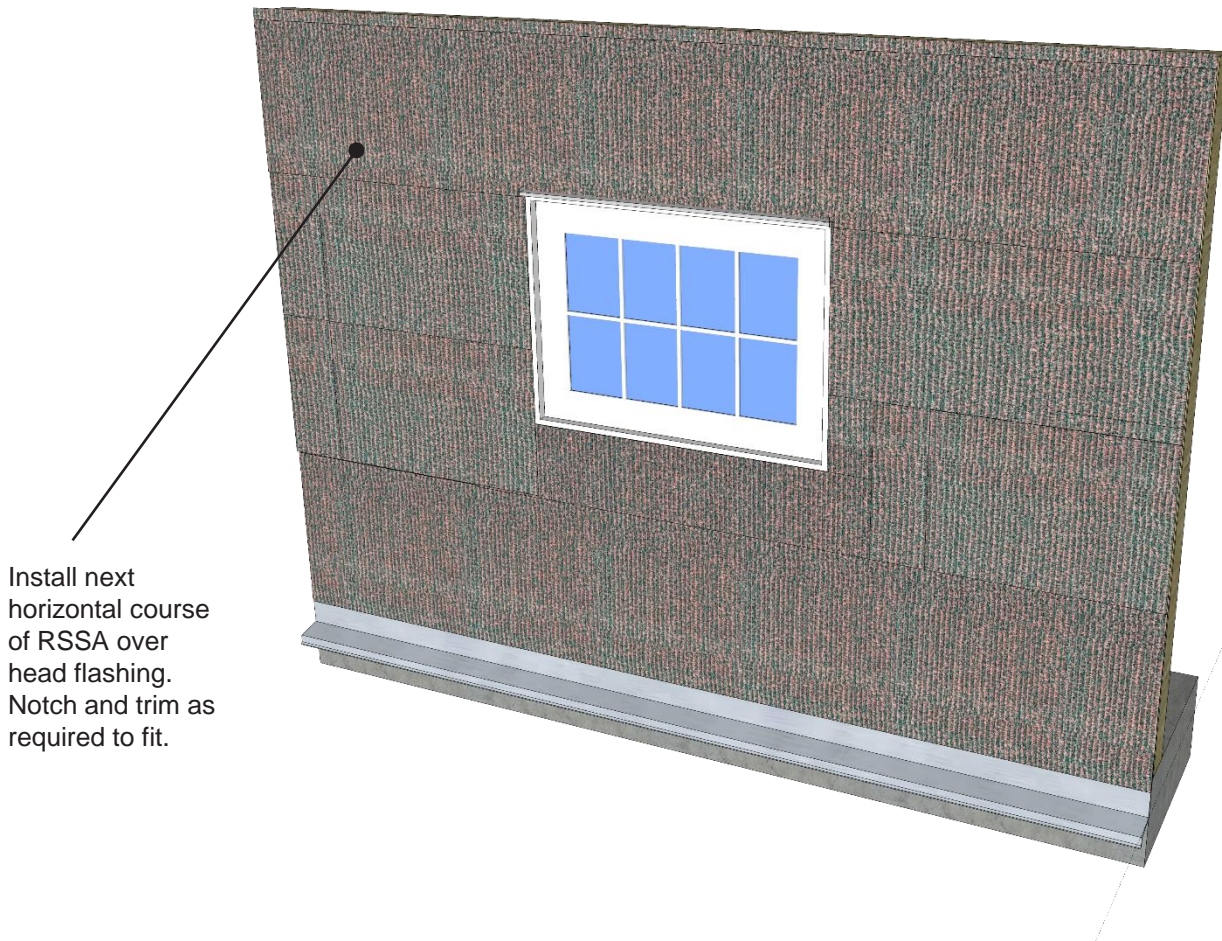
Detail sketch is generic, representing suggested best practices for VaproShield materials, and does not represent a specific job site condition and therefore may not be applicable to certain projects. Detail sketch is designed for use as a reference and must be approved by the designer/consultant of record for each project prior to installation by the subcontractor. Changes and approvals of VaproShield details are the sole responsibility of the designer/consultant of record. VaproShield is **not** the designer of record for building enclosure details and takes no responsibility for the accuracy or interpretation of actual project site conditions.

DRAWN BY: AR DATE: 3/29/24

REF: 258-15

Always check www.VaproShield.com for the latest details and installation instructions

Step 16: RainScreen SA Window Flashing Sequence



Install next horizontal course of RSSA over head flashing. Notch and trim as required to fit.

RAINSCREEN SA™

PRODUCT DESCRIPTION

RainScreen SA (RSSA) is a self-adhered Air Barrier and WRB membrane with built-in rainscreen drainage matrix.

The factory-bonded drainage matrix (3mm or 7mm) creates an unimpeded vertical drainage plane behind the cladding.

DISCLAIMER

Detail sketch is generic, representing suggested best practices for VaproShield materials, and does not represent a specific job site condition and therefore may not be applicable to certain projects. Detail sketch is designed for use as a reference and must be approved by the designer/consultant of record for each project prior to installation by the subcontractor. Changes and approvals of VaproShield details are the sole responsibility of the designer/consultant of record. VaproShield is **not** the designer of record for building enclosure details and takes no responsibility for the accuracy or interpretation of actual project site conditions.

DRAWN BY: AR DATE: 3/29/24

REF: 258-16

Always check www.VaproShield.com for the latest details and installation instructions