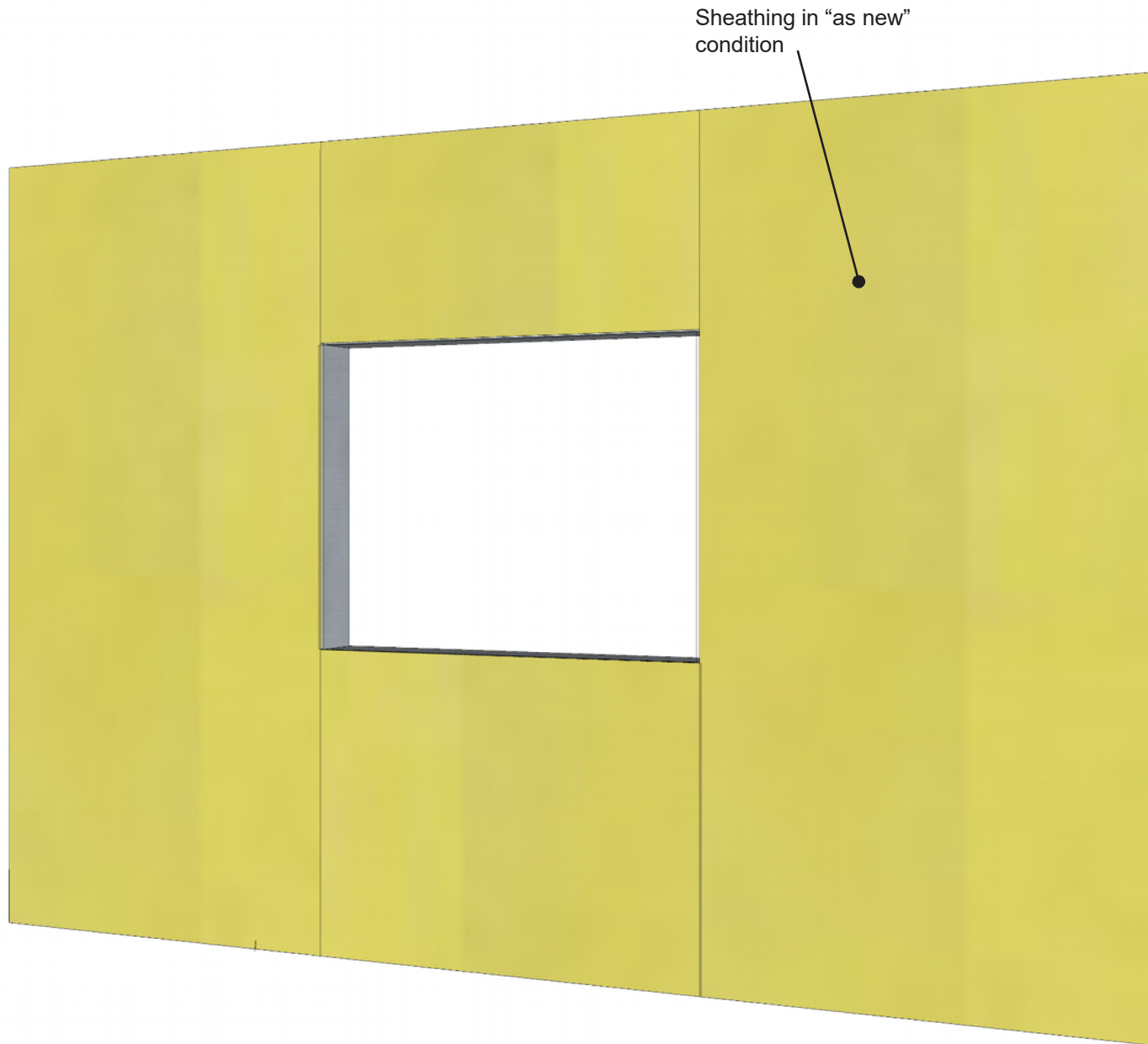


Step 1: Commercial Window RO Flashing System



VAPROBOND™

Step 1: Inspect rough opening,
patch pre-punched holes with
CanFlashing SA

PRODUCT DESCRIPTION

VaproBond™ is a single component 100% silicone adhesive sealant used to bind layers of VaproShield membranes to each other or typical construction material surfaces. It simplifies the process of producing watertight, airtight details.

DISCLAIMER

Detail sketch is generic, representing suggested best practices for VaproShield materials, and does not represent a specific job site condition and therefore may not be applicable to certain projects. Detail sketch is designed for use as a reference and must be approved by the designer/ consultant of record for each project prior to installation by the subcontractor. Changes and approvals of VaproShield details are the sole responsibility of the designer/consultant of record. VaproShield is **not** the designer of record for building enclosure details and takes no responsibility for the accuracy or interpretation of actual project site conditions.

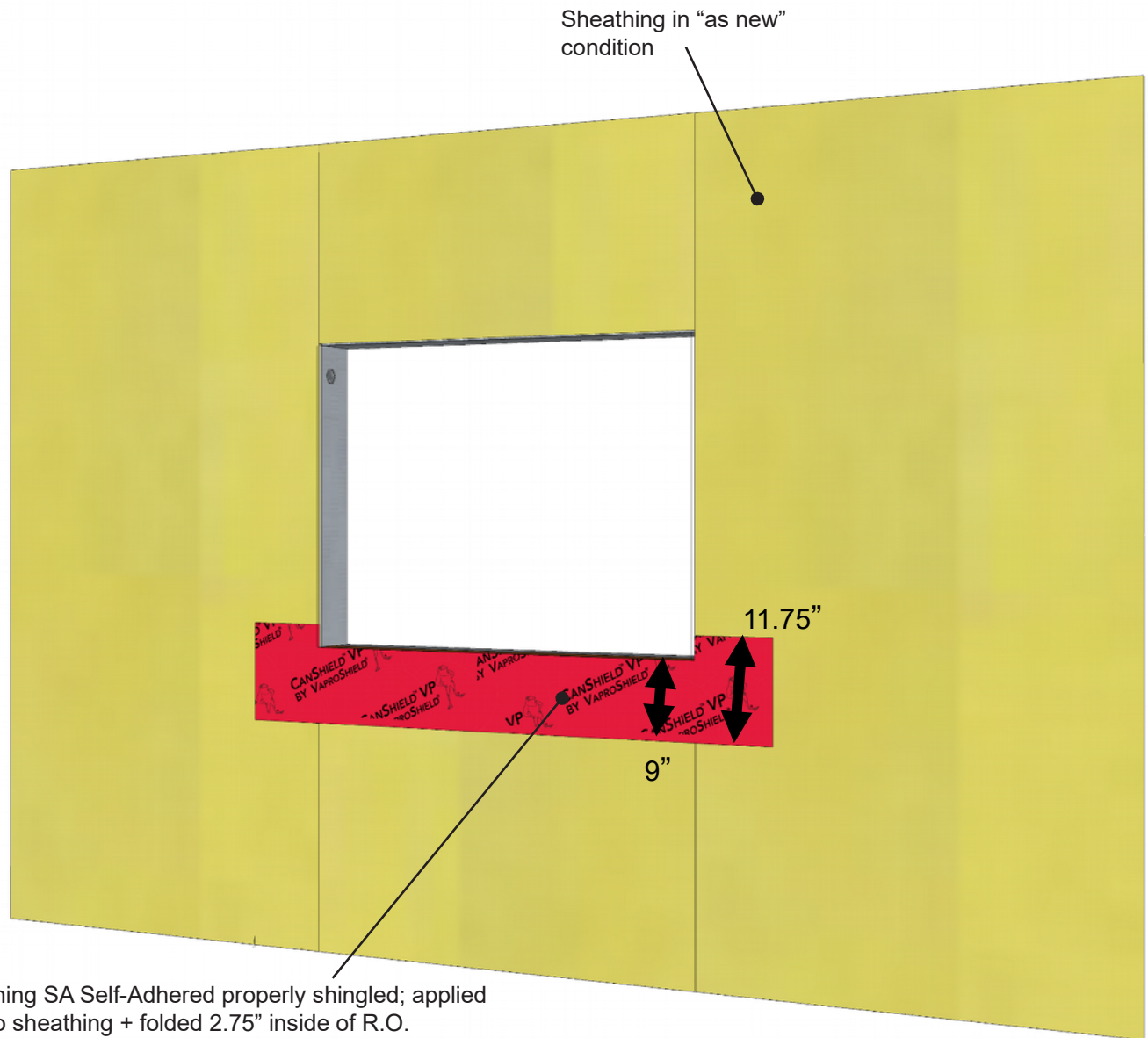
DRAWN BY: AR

DATE: 12/15/20

REF: 256-1

Always check www.VaproShield.com for the latest details and installation instructions

Step 2: Commercial Window RO Flashing System



CanFlashing SA Self-Adhered properly shingled; applied directly to sheathing + folded 2.75" inside of R.O.

Note: Total of 11.75" of flashing should be used:

- 9" of flashing should be left on the face of the sheathing
- 6" of release film from the bottom of the flashing to be left attached for shingling over membrane.

VAPROBOND™

Step 2: Install CanFlashing SA into sill with 2.75" folded into R.O. 9" left on face, with bottom 6" of release film to remain attached.

PRODUCT DESCRIPTION

VaproBond™ is a single component 100% silicone adhesive sealant used to bind layers of VaproShield membranes to each other or typical construction material surfaces. It simplifies the process of producing watertight, airtight details.

DISCLAIMER

Detail sketch is generic, representing suggested best practices for VaproShield materials, and does not represent a specific job site condition and therefore may not be applicable to certain projects. Detail sketch is designed for use as a reference and must be approved by the designer/ consultant of record for each project prior to installation by the subcontractor. Changes and approvals of VaproShield details are the sole responsibility of the designer/consultant of record. VaproShield is **not** the designer of record for building enclosure details and takes no responsibility for the accuracy or interpretation of actual project site conditions.

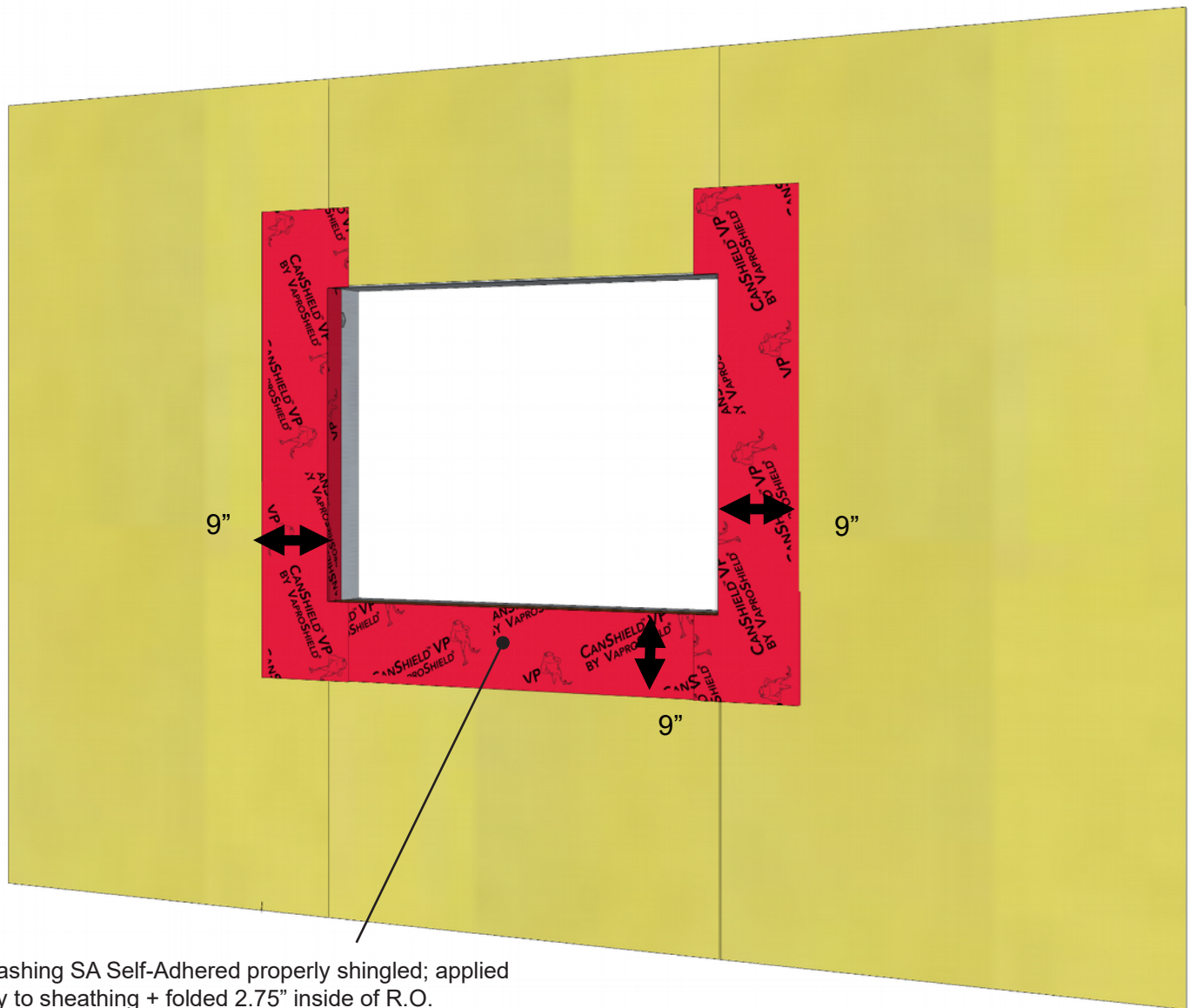
DRAWN BY: AR

DATE: 12/15/20

REF: 256-2

Always check www.VaproShield.com for the latest details and installation instructions

Step 3: Commercial Window RO Flashing System



CanFlashing SA Self-Adhered properly shingled; applied directly to sheathing + folded 2.75" inside of R.O.

Note: Total of 11.75" of flashing should be used:

- 9" of flashing should be left on the face of the sheathing
- 6" of release film from the bottom of the flashing to be left attached for shingling over membrane.

VAPROBOND™

Step 3: Install jamb pieces with 2.75" folded into R.O. 9" to be left on face.

PRODUCT DESCRIPTION

VaproBond™ is a single component 100% silicone adhesive sealant used to bind layers of VaproShield membranes to each other or typical construction material surfaces. It simplifies the process of producing watertight, airtight details.

DISCLAIMER

Detail sketch is generic, representing suggested best practices for VaproShield materials, and does not represent a specific job site condition and therefore may not be applicable to certain projects. Detail sketch is designed for use as a reference and must be approved by the designer/ consultant of record for each project prior to installation by the subcontractor. Changes and approvals of VaproShield details are the sole responsibility of the designer/consultant of record. VaproShield is **not** the designer of record for building enclosure details and takes no responsibility for the accuracy or interpretation of actual project site conditions.

DRAWN BY: AR

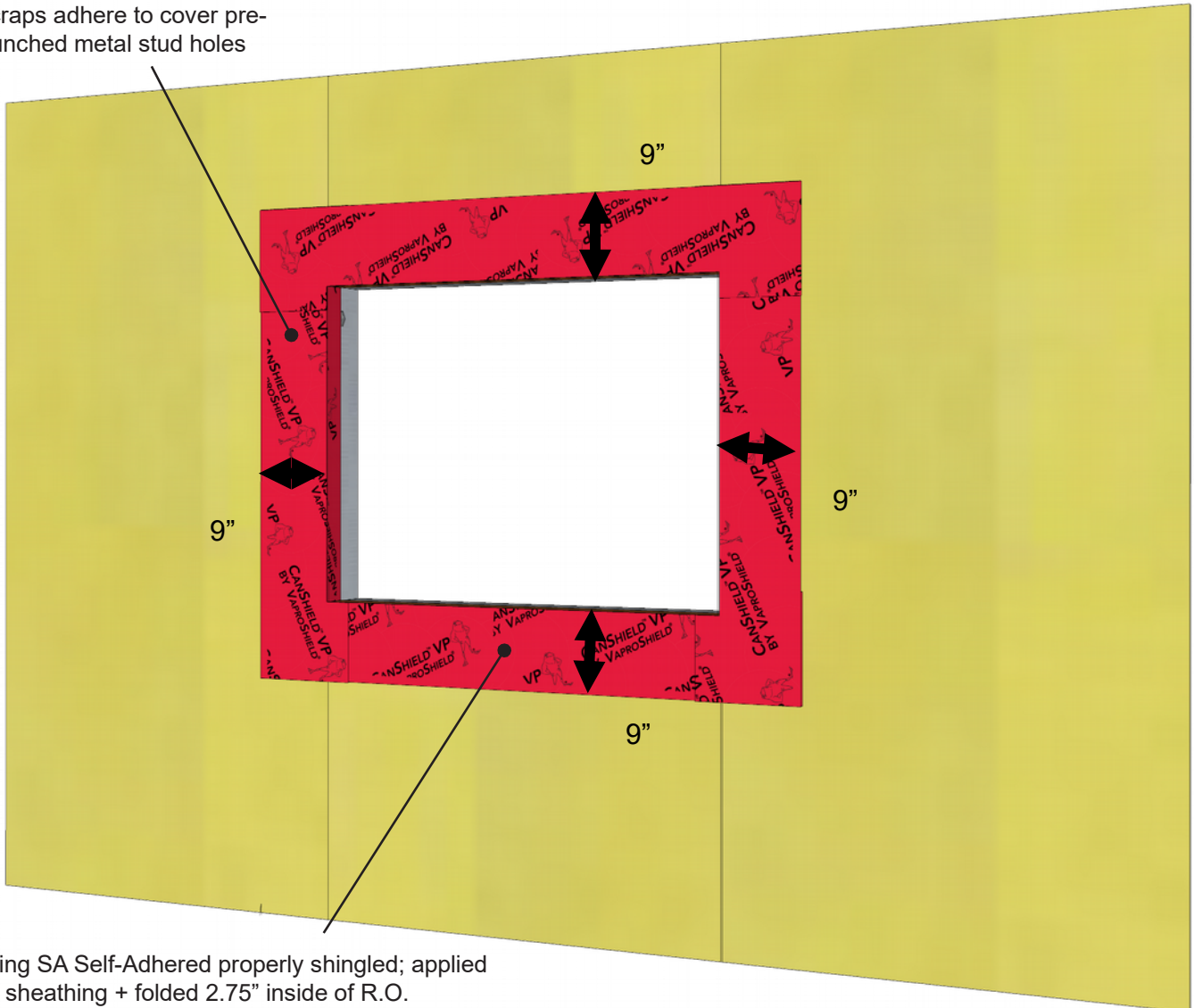
DATE: 12/15/20

REF: 256-3

Always check www.VaproShield.com for the latest details and installation instructions

Step 4: Commercial Window RO Flashing System

CanFlashing SA Self-Adhered scraps adhere to cover pre-punched metal stud holes



CanFlashing SA Self-Adhered properly shingled; applied directly to sheathing + folded 2.75" inside of R.O.

Note: Total of 11.75" of flashing should be used:

- 9" of flashing should be left on the face of the sheathing
- 6" of release film from the bottom of the flashing to be left attached for shingling over membrane.

VAPROBOND™

Step 4: Install head piece with 2.75" folded into R.O. 9" to be left on face.

PRODUCT DESCRIPTION

VaproBond™ is a single component 100% silicone adhesive sealant used to bind layers of VaproShield membranes to each other or typical construction material surfaces. It simplifies the process of producing watertight, airtight details.

DISCLAIMER

Detail sketch is generic, representing suggested best practices for VaproShield materials, and does not represent a specific job site condition and therefore may not be applicable to certain projects. Detail sketch is designed for use as a reference and must be approved by the designer/ consultant of record for each project prior to installation by the subcontractor. Changes and approvals of VaproShield details are the sole responsibility of the designer/consultant of record. VaproShield is **not** the designer of record for building enclosure details and takes no responsibility for the accuracy or interpretation of actual project site conditions.

DRAWN BY: AR

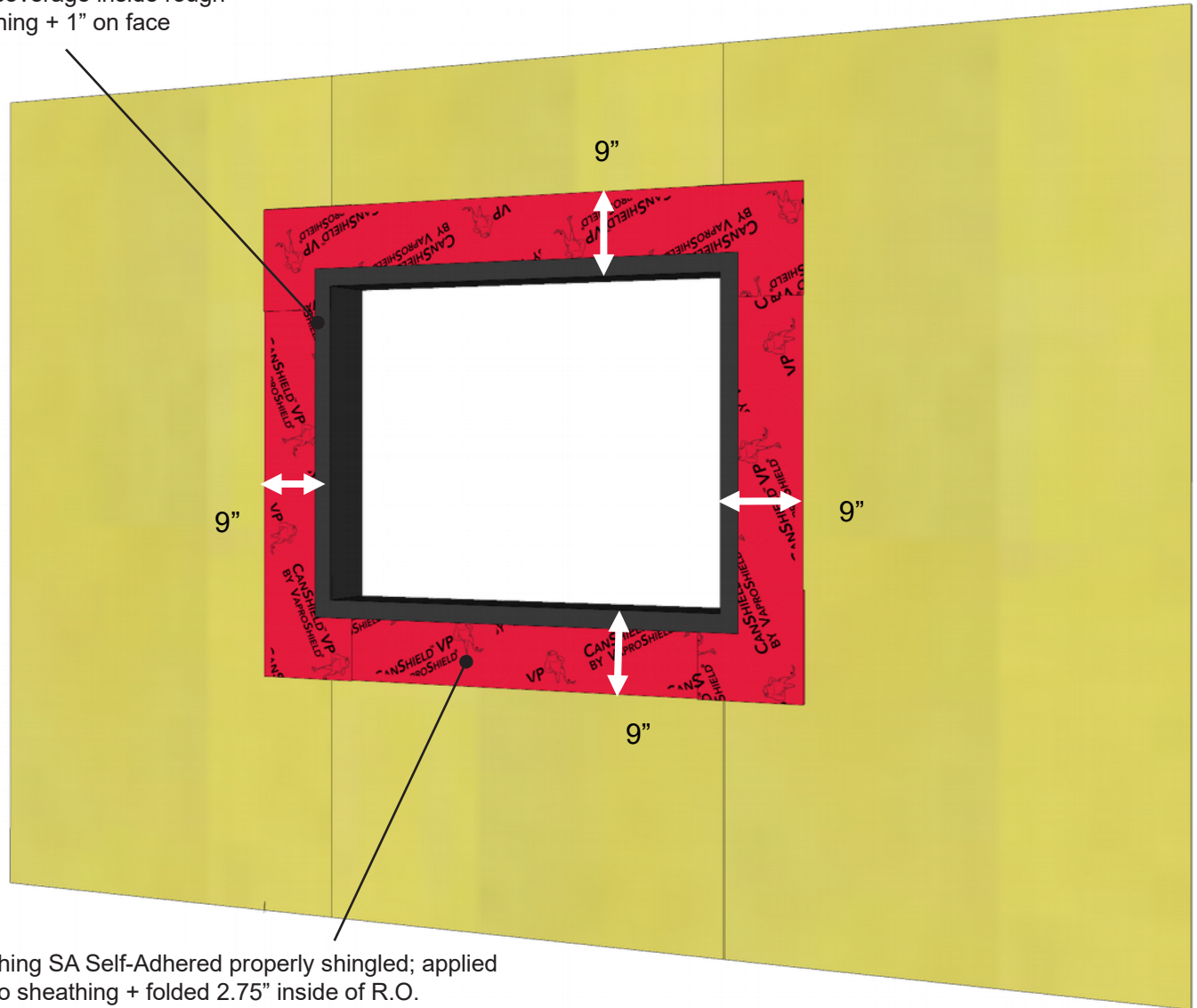
DATE: 12/15/20

REF: 256-4

Always check www.VaproShield.com for the latest details and installation instructions

Step 5: Commercial Window RO Flashing System

VaproBond
full-coverage inside rough
opening + 1" on face



CanFlashing SA Self-Adhered properly shingled; applied directly to sheathing + folded 2.75" inside of R.O.

Note: Total of 11.75" of flashing should be used:

- 9" of flashing should be left on the face of the sheathing
- 6" of release film from the bottom of the flashing to be left attached for shingling over membrane.

VAPROBOND™

Step 5: Apply VaproBond to inside of R.O. (full coverage) and 1" on face

PRODUCT DESCRIPTION

VaproBond™ is a single component 100% silicone adhesive sealant used to bind layers of VaproShield membranes to each other or typical construction material surfaces. It simplifies the process of producing watertight, airtight details.

DISCLAIMER

Detail sketch is generic, representing suggested best practices for VaproShield materials, and does not represent a specific job site condition and therefore may not be applicable to certain projects. Detail sketch is designed for use as a reference and must be approved by the designer/ consultant of record for each project prior to installation by the subcontractor. Changes and approvals of VaproShield details are the sole responsibility of the designer/consultant of record. VaproShield is **not** the designer of record for building enclosure details and takes no responsibility for the accuracy or interpretation of actual project site conditions.

DRAWN BY: AR

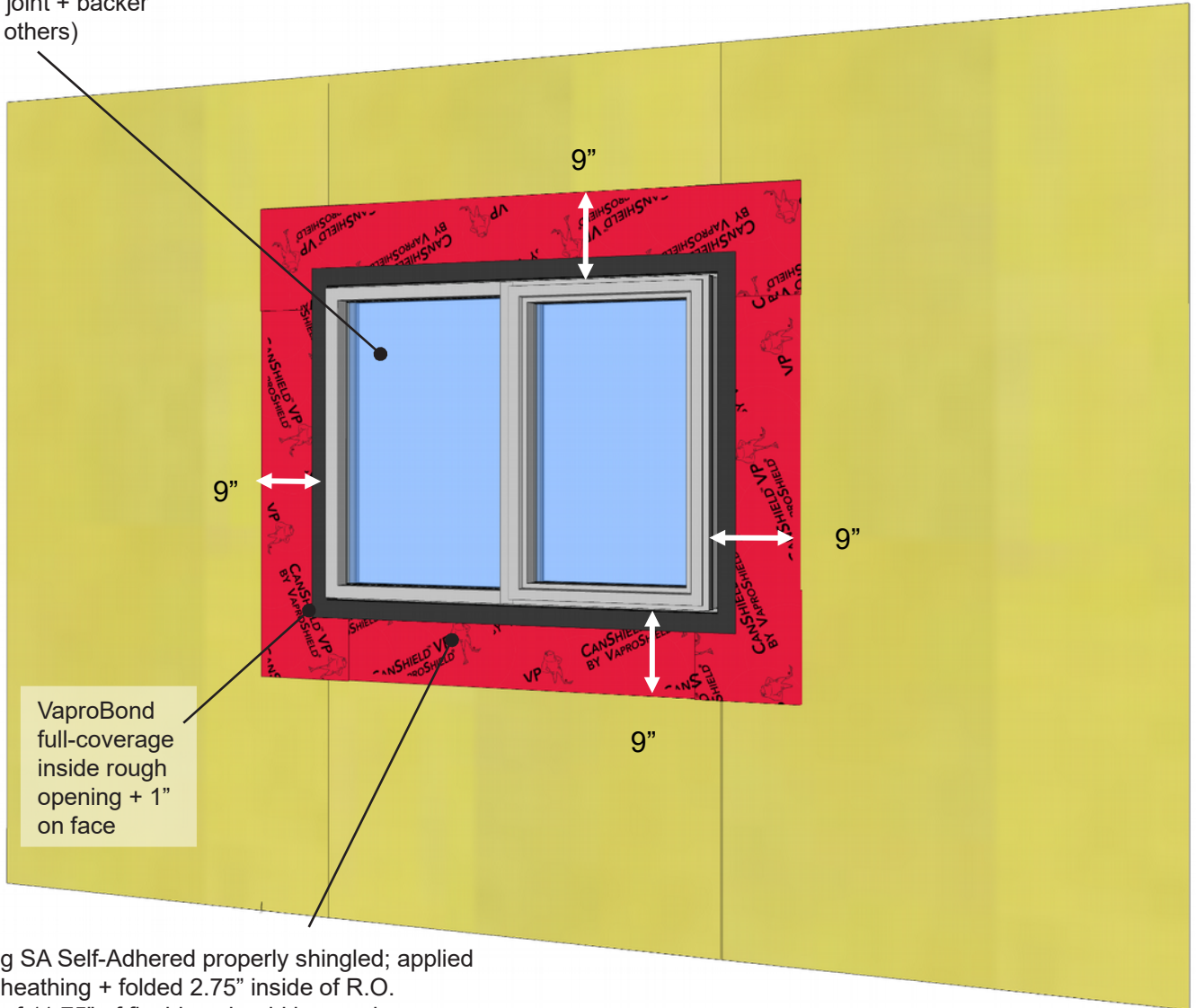
DATE: 12/15/20

REF: 256-5

Always check www.VaproShield.com for the latest details and installation instructions

Step 6: Commercial Window RO Flashing System

Commercial Window w/
sealant joint + backer
rod (by others)



CanFlashing SA Self-Adhered properly shingled; applied directly to sheathing + folded 2.75" inside of R.O.

Note: Total of 11.75" of flashing should be used:

- 9" of flashing should be left on the face of the sheathing
- 6" of release film from the bottom of the flashing to be left attached for shingling over membrane.

VAPROBOND™

Step 6: Install commercial window
w/ perimeter sealant joint and
backer rod (by others)

PRODUCT DESCRIPTION

VaproBond™ is a single component 100% silicone adhesive sealant used to bind layers of VaproShield membranes to each other or typical construction material surfaces. It simplifies the process of producing watertight, airtight details.

DISCLAIMER

Detail sketch is generic, representing suggested best practices for VaproShield materials, and does not represent a specific job site condition and therefore may not be applicable to certain projects. Detail sketch is designed for use as a reference and must be approved by the designer/ consultant of record for each project prior to installation by the subcontractor. Changes and approvals of VaproShield details are the sole responsibility of the designer/consultant of record. VaproShield is **not** the designer of record for building enclosure details and takes no responsibility for the accuracy or interpretation of actual project site conditions.

DRAWN BY: AR

DATE: 12/15/20

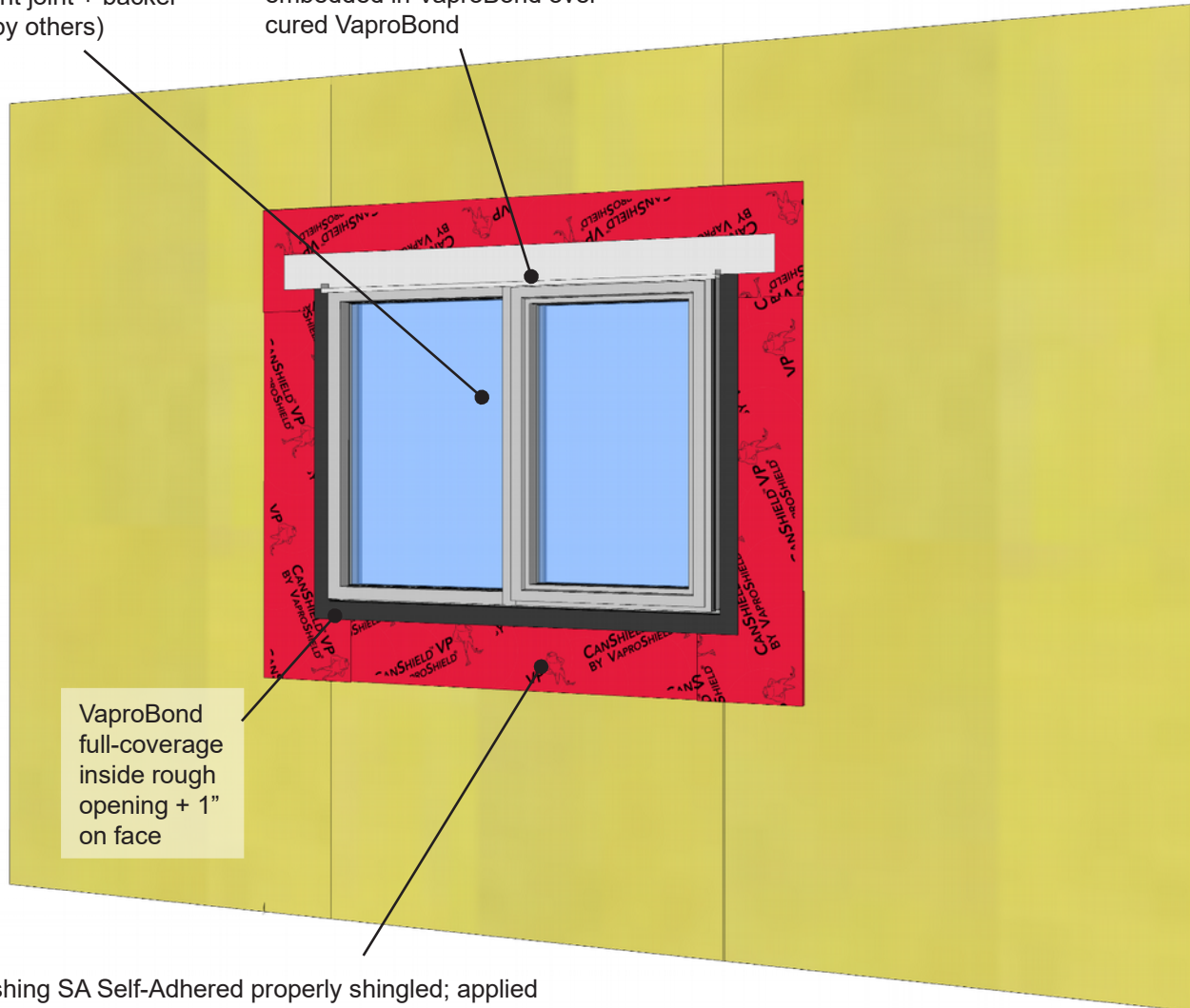
REF: 256-6

Always check www.VaproShield.com for the latest details and installation instructions

Step 7: Commercial Window RO Flashing System

Commercial Window w/
sealant joint + backer
rod (by others)

Head flashing (by others) fully
embedded in VaproBond over
cured VaproBond



CanFlashing SA Self-Adhered properly shingled; applied directly to sheathing + folded 2.75" inside of R.O.

Note: Total of 11.75" of flashing should be used:

- 9" of flashing should be left on the face of the sheathing
- 6" of release film from the bottom of the flashing to be left attached for shingling over membrane.

VAPROBOND™

Step 7: Install metal head flashing
(by others) fully embedded in
VaproBond over cured VaproBond

PRODUCT DESCRIPTION

VaproBond™ is a single component 100% silicone adhesive sealant used to bind layers of VaproShield membranes to each other or typical construction material surfaces. It simplifies the process of producing watertight, airtight details.

DISCLAIMER

Detail sketch is generic, representing suggested best practices for VaproShield materials, and does not represent a specific job site condition and therefore may not be applicable to certain projects. Detail sketch is designed for use as a reference and must be approved by the designer/ consultant of record for each project prior to installation by the subcontractor. Changes and approvals of VaproShield details are the sole responsibility of the designer/consultant of record. VaproShield is **not** the designer of record for building enclosure details and takes no responsibility for the accuracy or interpretation of actual project site conditions.

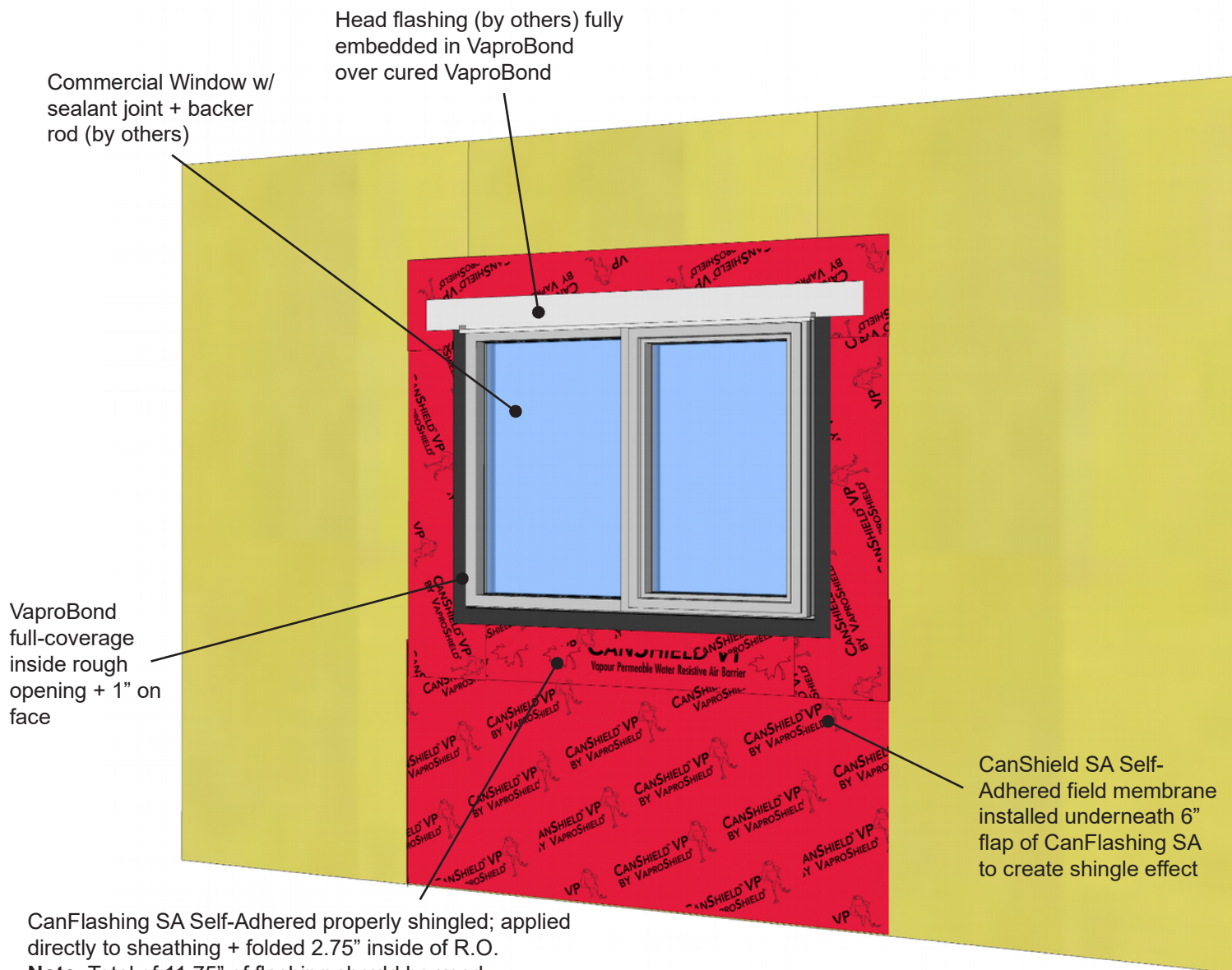
DRAWN BY: AR

DATE: 12/15/20

REF: 256-7

Always check www.VaproShield.com for the latest details and installation instructions

Step 8: Commercial Window RO Flashing System



CanFlashing SA Self-Adhered properly shingled; applied directly to sheathing + folded 2.75" inside of R.O.

Note: Total of 11.75" of flashing should be used:

- 9" of flashing should be left on the face of the sheathing
- Remove release film from flashing and adhere bottom 6" to field membrane.

VAPROBOND™

Step 8: Install field membrane underneath 6" flap of sill flashing to create shingle effect, remove release film, adhere to membrane

PRODUCT DESCRIPTION

VaproBond™ is a single component 100% silicone adhesive sealant used to bind layers of VaproShield membranes to each other or typical construction material surfaces. It simplifies the process of producing watertight, airtight details.

DISCLAIMER

Detail sketch is generic, representing suggested best practices for VaproShield materials, and does not represent a specific job site condition and therefore may not be applicable to certain projects. Detail sketch is designed for use as a reference and must be approved by the designer/ consultant of record for each project prior to installation by the subcontractor. Changes and approvals of VaproShield details are the sole responsibility of the designer/consultant of record. VaproShield is **not** the designer of record for building enclosure details and takes no responsibility for the accuracy or interpretation of actual project site conditions.

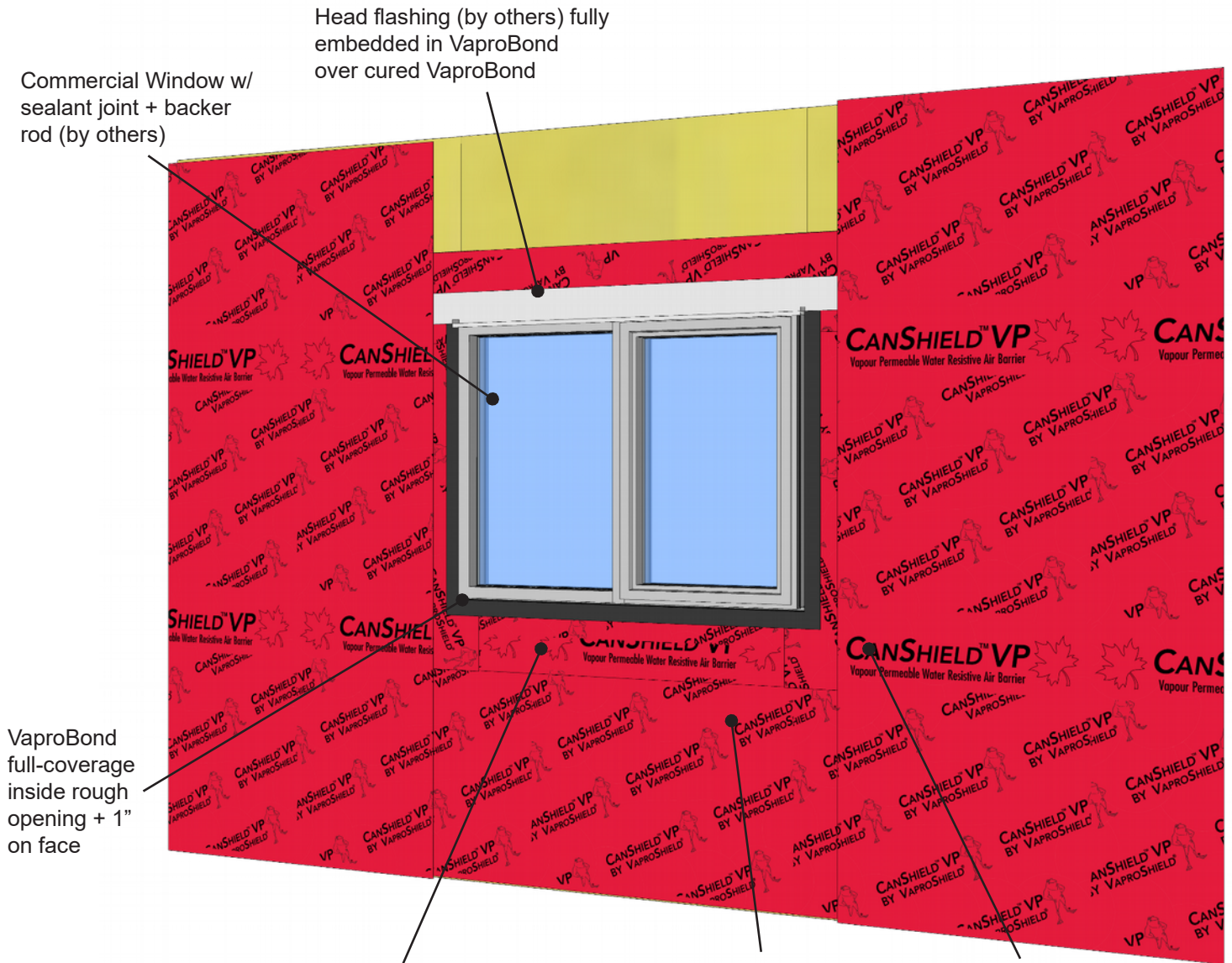
DRAWN BY: AR

DATE: 12/15/20

REF: 256-8

Always check www.VaproShield.com for the latest details and installation instructions

Step 9: Commercial Window RO Flashing System



CanFlashing SA Self-Adhered properly shingled; applied directly to sheathing + folded 2.75" inside of R.O.

Note: Total of 11.75" of flashing should be used:

- 9" of flashing should be left on the face of the sheathing
- Remove release film from flashing and adhere bottom 6" to field membrane.

CanShield SA Self-Adhered installed underneath 6" flap of CanFlashing SA to create shingle effect

CanShield SA Self-Adhered field membrane installed vertically with minimum 3" overlap

VAPROBOND™

Step 9: Install field membrane vertically to sheathing, maintaining 3" minimum overlap with R.O. flashing

PRODUCT DESCRIPTION

VaproBond™ is a single component 100% silicone adhesive sealant used to bind layers of VaproShield membranes to each other or typical construction material surfaces. It simplifies the process of producing watertight, airtight details.

DISCLAIMER

Detail sketch is generic, representing suggested best practices for VaproShield materials, and does not represent a specific job site condition and therefore may not be applicable to certain projects. Detail sketch is designed for use as a reference and must be approved by the designer/ consultant of record for each project prior to installation by the subcontractor. Changes and approvals of VaproShield details are the sole responsibility of the designer/consultant of record. VaproShield is **not** the designer of record for building enclosure details and takes no responsibility for the accuracy or interpretation of actual project site conditions.

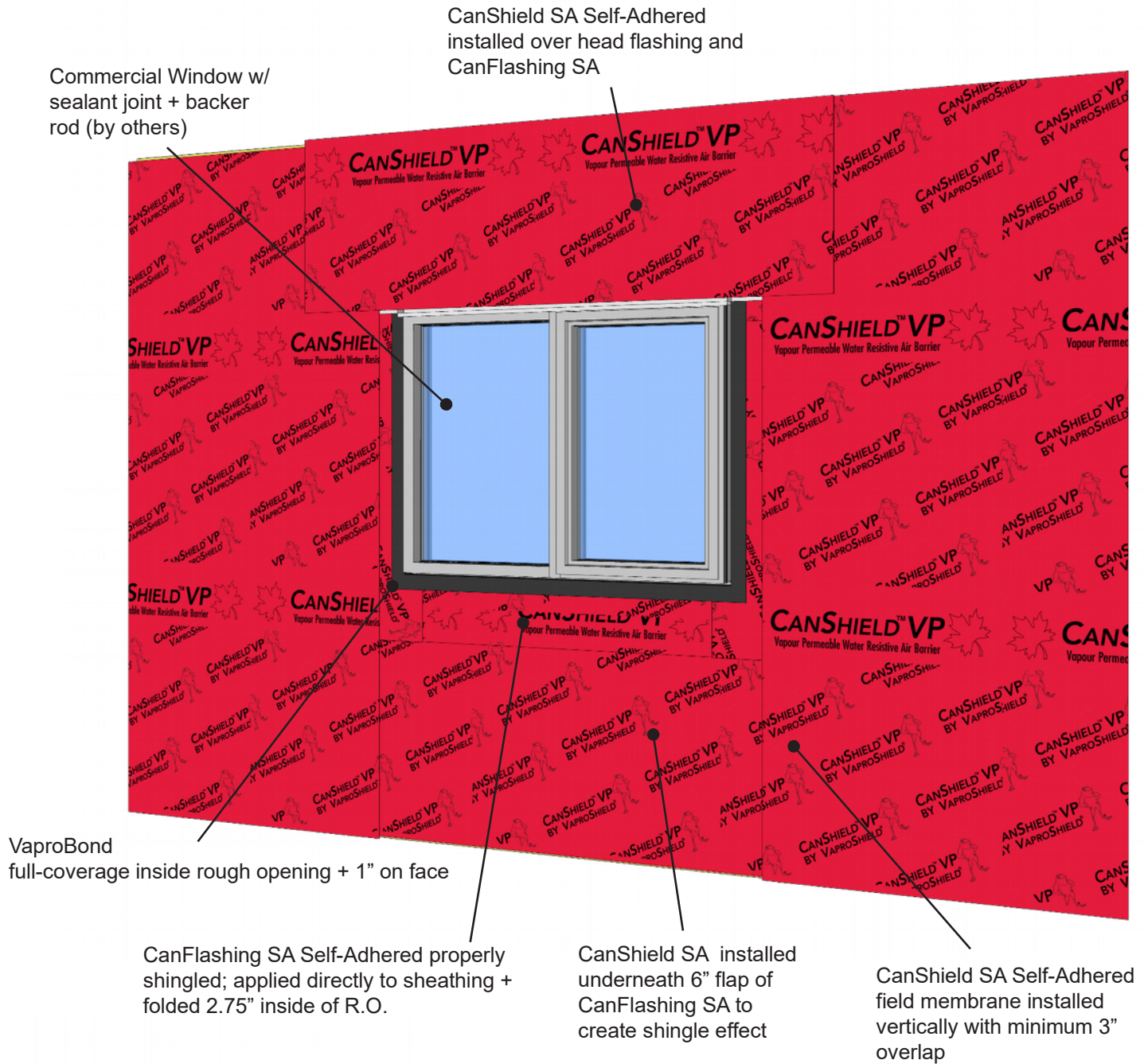
DRAWN BY: AR

DATE: 12/15/20

REF: 256-9

Always check www.VaproShield.com for the latest details and installation instructions

Step 10: Commercial Window RO Flashing System



VAPROBOND™

Step 10: Install field membrane over metal head flashing, maintaining 3" minimum overlap to adjacent field membrane.

PRODUCT DESCRIPTION

VaproBond™ is a single component 100% silicone adhesive sealant used to bind layers of VaproShield membranes to each other or typical construction material surfaces. It simplifies the process of producing watertight, airtight details.

DISCLAIMER

Detail sketch is generic, representing suggested best practices for VaproShield materials, and does not represent a specific job site condition and therefore may not be applicable to certain projects. Detail sketch is designed for use as a reference and must be approved by the designer/ consultant of record for each project prior to installation by the subcontractor. Changes and approvals of VaproShield details are the sole responsibility of the designer/consultant of record. VaproShield is **not** the designer of record for building enclosure details and takes no responsibility for the accuracy or interpretation of actual project site conditions.

DRAWN BY: AR

DATE: 12/15/20

REF: 256-10

Always check www.VaproShield.com for the latest details and installation instructions