

# VaproShield Membranes

# Benefits for CLT Construction

High drying capacity (breathable) and air tight

Advanced technology adhesive

Bonds without primer

Low temperature application

Class A Fire Rated

Fully tested rough opening accessories

Emits Zero VOCs

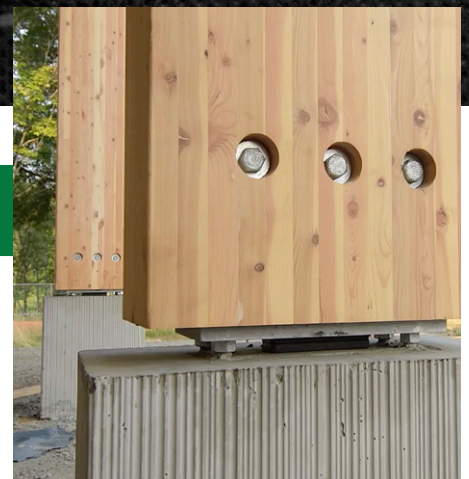
Adapts to extreme building expansion/contraction

20 year material warranty

## The Problem

CLT substrates must dry out

Cross-laminated timber (CLT) is a highly absorbent material and must battle moisture infiltration from occupants and Mother Nature. If the moisture storage capacity is exceeded, the risk of mold, mildew, and building deterioration escalates.



## The Solution



Candlewood Suites, New York



WrapShield (orange) and RevealShield (black) SA Self-Adhered water resistive barrier (WRB), vapor permeable air barrier (AB) sheet membranes offer **exceptionally high drying capacity**. Both help to dry-out moisture-laden CLT wood substrates, mitigating moisture damage within the building envelope.

RevealShield SA Self-Adhered creates the desired black reveal behind open joint cladding systems and offers excellent UV stability required for long term exposure.

With a **Flamespread Index of zero (0)**, RevealShield SA delivers **unprecedented fire performance**.



# VaproShield

# on the Move with CLT

Candlewood Suites, New York

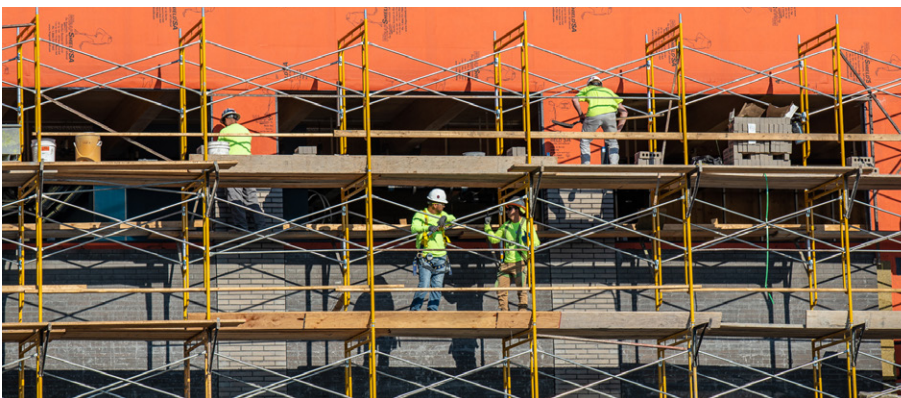
## Candlewood Suites

Over 50,000 sq.ft. of WrapShield SA Self-Adhered was installed on the Candlewood Suites, the first hotel in the country to utilize CLT. WrapShield SA was an **in-process replacement** for the originally specified fluid-applied air barrier, which failed to deliver even the most basic protection. Chosen for its **proven, high performance WRB/Air Barrier characteristics** and **proprietary vapor permeable pressure-sensitive adhesive**, WrapShield SA easily adhered to the CLT substrate. It's innovative adhesive **improves both the quality and speed of installation** by allowing limited repositioning prior to applying pressure.

WrapShield SA's **exceptionally high drying capacity** will help to dry-out the inherently absorbent CLT substrate, mitigating moisture damage in the building envelope.



1st Tech Credit Union, Oregon



Viega US Headquarters, Colorado

Visit [VaproShield.com](http://VaproShield.com) to learn more about how VaproShield membranes can benefit your CLT construction project.