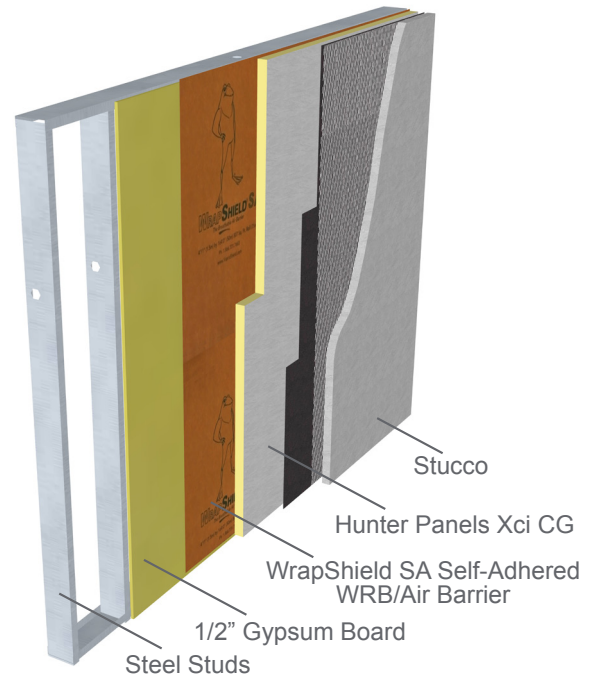


**Stucco, Xci CG, Steel Studs**  
View WRB placement variations p.2

**WrapShield SA Self-Adhered** is a self-adhered, water resistive (WRB) vapor permeable air barrier sheet membrane adhered directly to substrate.

**RevealShield SA Self-Adhered** is a black, UV stable, water resistive (WRB) vapor permeable self-adhered air barrier membrane for open joint rain screen cladding systems.

Per Chapter 26 of the International Building Code, the wall assembly shall be tested in accordance with and comply with the acceptance criteria of NFPA 285. The listed assemblies in this document have met that criteria according to Hunter Panels. Visit [hunterpanels.com](http://hunterpanels.com) for verification.



Comprehensive details available at [VaproShield.com](http://VaproShield.com).  
Illustration for explanatory purposes only.

Wall Component	Materials
<b>Base Wall System</b>	Steel Stud — 1 layer 5/8" thick Type X Gypsum wallboard on interior, installed over steel studs: minimum 3 5/8" depth, minimum 22 gauge at a maximum of 24 inch o.c. with lateral bracing every 4 ft. vertically.
<b>Approved Exterior Finish</b>	Stucco — Minimum 1/2" thick, Exterior Cement Plaster and Lath.
<b>Material Options</b>	1) 3.5" max thickness of <b>Hunter Xci CG</b> 2) 4" max thickness of <b>Hunter Xci CG</b> with non-combustible claddings, contact Hunter Panels for details
<b>Floorline Firestopping</b>	Mineral fiber based safig insulation in each cavity at floor line. Safig thickness must match cavity depth. OR Solid FRTW blocking at floor line in accordance with building code requirements for Type III construction.
<b>Stud Cavity</b>	Any noncombustible insulation, Covestro BaySeal CC X or CC CP**, BASF Walltite**, NCFI InsulBlock SPF**, Icnene MD-C-200v3 (ProSeal) up to 5 1/2" ** or None
<b>Exterior Sheathing</b>	1/2" (min) thick exterior gypsum sheathing OR 1/2" (min) FRTW structural panels in Type III construction. OR None*
<b>Weather Resistive Membrane Applied to Base Wall</b>	VaproShield WrapShield SA Self-Adhered, RevealShield SA Self-Adhered
<b>Weather Resistive Membrane Applied to Exterior Insulation</b>	VaproShield WrapShield SA Self-Adhered, RevealShield SA Self-Adhered

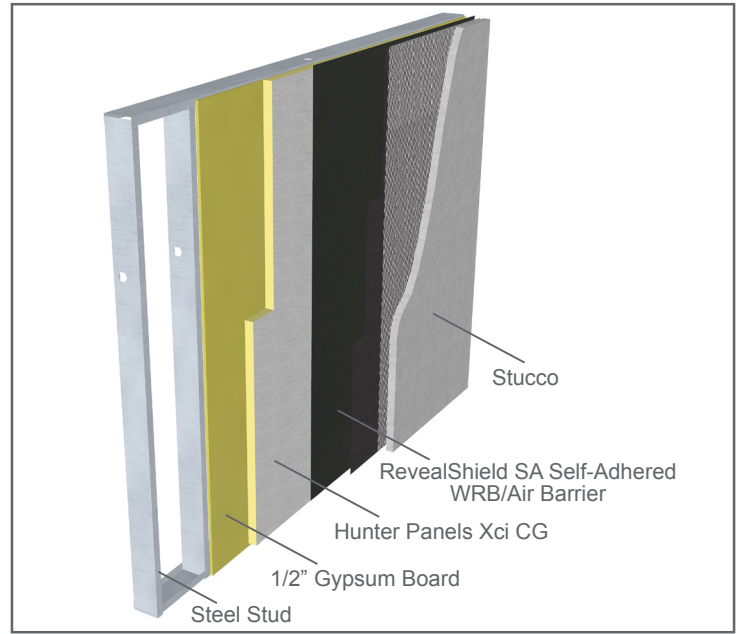
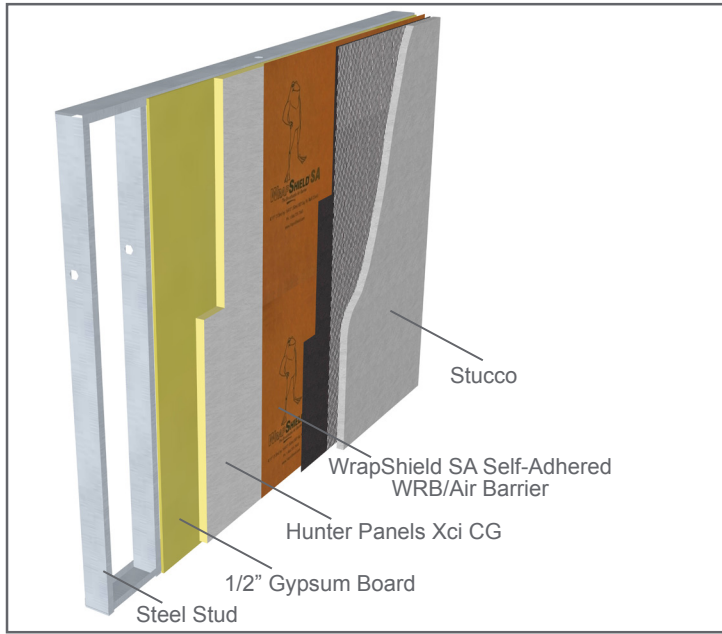
\*Contact Hunter Panels for details regarding this option  
\*\*Can only be used with 1/2" or greater Gypsum Sheathing

The location and number of WRB's in the wall assembly are determined by the architect.  
See p.2 for additional illustrations showing VaproShield WRB/Air Barrier placement.



**VaproShield WRB/Air Barrier Placement Variations**

as per Hunter NFPA 285 Test Data



Comprehensive details available at [VaproShield.com](http://VaproShield.com).  
Illustration for explanatory purposes only.