

Vapro-SS Flashing is a multi-purpose self-adhered flashing for use as a transition or rough opening flashing.

- Thru-wall Flashing
- Watertight Bond
- Rough Opening Flashing
- Low Temperature Application



Vapro-SS Flashing, Available in widths:
4", 6", 12", 18" x 50 ft. (15, 30 or 45 cm x 15.24 m)

Exceptional Durability and Performance

- Flexible 2 mil (0.05 mm) sheet of type 304 stainless steel
- 8 mils (0.2 mm) of butyl adhesive with a siliconized release liner
- Best in class puncture and tear resistance
- Install in temperatures ranging from 20 °F - 170 °F (-7 °C - 77 °C)
- Stable and air tight from -70 °F to 200 °F (21 °C - 93 °C)
- Class A, ASTM E84 fire rated
- Resistant to mold, mildew and rot

Uses

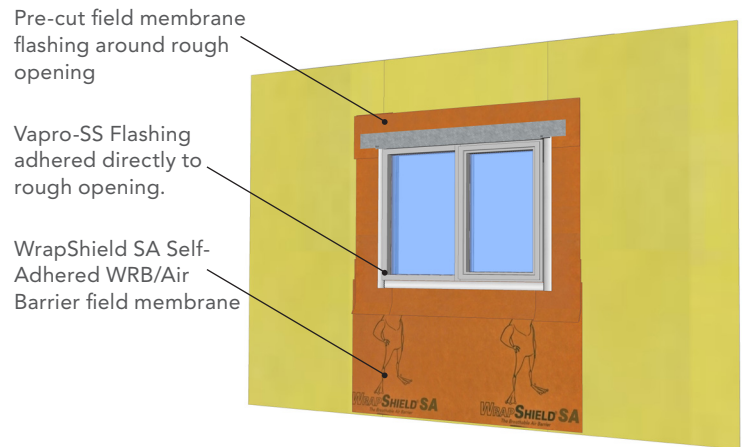
- Thru-wall flashing for masonry and stone structural components
- Rough opening flashing
- Transition membrane (air barriers, WRB, roofing membranes, plaza and below grade waterproofing)
- Curtain wall perimeter flashing
- Window and door pan fabrication
- Jamb closure flashing
- Roof to parapet flashing

Compatibility

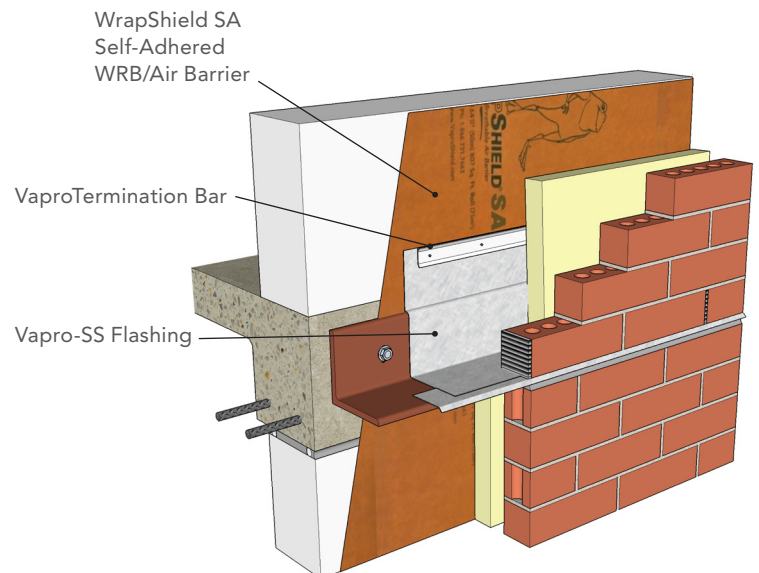
- Use with all VaproShield materials
- Compatible with: spray polyurethane foam, exterior rigid insulation, exterior gypsum, plywood, concrete, metals
- Available in widths: 4", 6", 12", 18" x 50 ft. (15, 30 or 45 cm x 15.24 m)

Sustainable Design Benefits

- Manufactured from 60% recycled stainless steel, designed to last for the life of the building
- Contributes to LEED points by satisfying EA Credit 1 (optimize energy performance) and EQ Credit 4.1 (low emitting materials)



Vapro-SS Flashing applied directly to rough opening after VaproFlashing has been applied, ideal for use in all weather conditions.



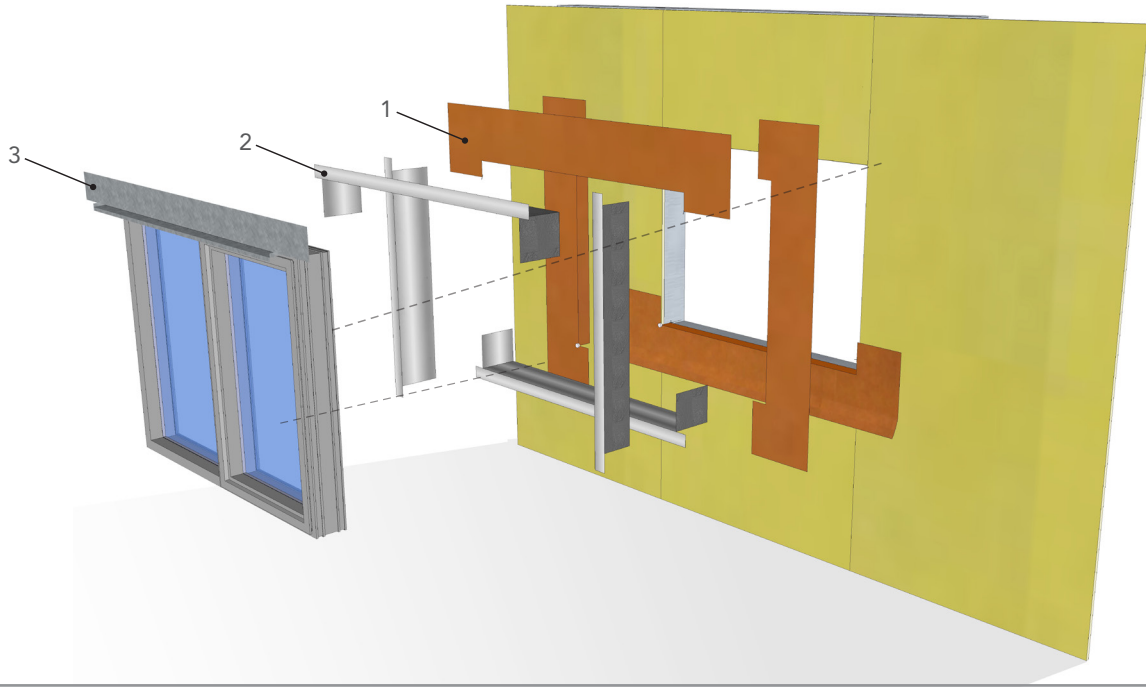
Vapro-SS Flashing installed in a thru-wall application with integrated WrapShield SA Self-Adhered WRB/Air Barrier field membrane.

Fast, Simple Two Component Rough Opening Flashing

VAPRO-SS FLASHING™

Manage only two components in the field, use common hand tools, minimal training, contractor friendly system.

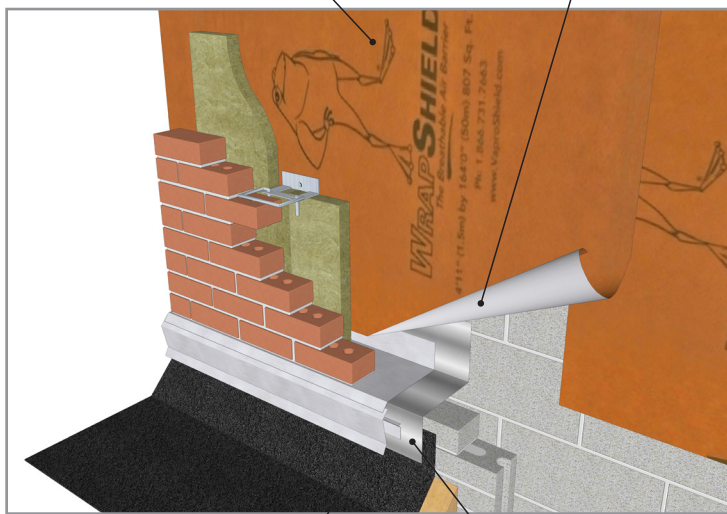
1. Apply VaproFlashing SA Self-Adhered directly to sheathing
2. Fold Vapro-SS Flashing into sill, head and jambs over flashing
3. Install window, sealant joints, backer rod and head flashing (by others)



Thru-wall Flashing Application

WrapShield SA Self-Adhered WRB/Air Barrier

WrapShield SA Self-Adhered laps over flashing materials



Roofing membrane (by others)

Vapro-SS Flashing shingled under flashing over roofing membrane

Product Testing

PROPERTY	TEST METHOD	TYPICAL VALUE
Tensile Strength	ASTM D882	100,000 psi (6,895,000 kpa)
Puncture	ASTM E154	2,500 psi (17,000 kpa)
Adhesion	PSTC-1	20 psi (138 kpa)
Application Temperature		20° F to 170° F (-6° C - 77° C)
Fire Resistance	ASTM E84	PASS , Class A
Mold Resistance	ASTM D3273	PASS

Visit VaproShield.com for:



Installation Instructions



Details