

OVERVIEW

Vapro-SS Flashing has been designed with a flexible 2 mil (0.05 mm) sheet of type 304 stainless steel, 8 mils (0.20 mm) of butyl adhesive and a siliconized release liner. Vapro-SS Flashing is a self-adhering metal flashing that offers best in class puncture and tear resistance.

It is a multi-purpose self-adhered flashing that can perform in various applications, see below examples:

- Through-Wall Flashing for Masonry and Stone structural components
- Transition Membrane (air barriers, WRB, roofing membranes, plaza and below grade waterproofing)
- Curtain Wall Perimeter Flashing
- Window and Door Pan Fabrication
- Jamb Closure Flashing
- Roof to Parapet Transition Flashing

TECHNICAL DATA

- Flexible self-adhered flashing with a removable release liner that can be installed in temperatures ranging from 20 °F (-6 °C) to 170 °F (77 °C)
- Stays stable and air tight from -70 °F (-57 °C) to 200 °F (93 °C)
- Easily adheres to the majority of air barriers, WRB's, sealants, insulations, below grade waterproofing and roofing membranes, which makes it an excellent transition flashing that is easy to install
- Provides a watertight bond, is mold resistant, fire resistant, and puncture resistant
- Available in 4, 6, 12, or 18 inches x 50 ft. (10, 15, 30 or 45 cm x 15.24 m).

COMPATIBILITY

- All VaproShield Materials
- Spray Polyurethane Foam
- Exterior Rigid Insulation
- Exterior Gypsum
- Plywood
- Concrete
- Metals

STORAGE AND HANDLING

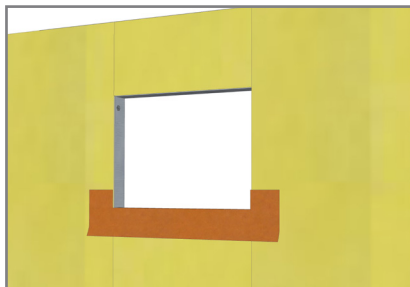
Store material in original packaging. Protect rolls from direct sunlight and inclement weather. Storage conditions: 0 °F (-18 °C) to 100 °F (38 °C)

Cover within a few days of installation to protect it from damage from different trades, the environment and falling debris.

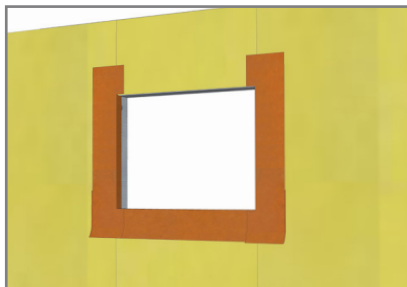
If flashing is left unprotected and it is punctured or torn, contact VaproShield for replacement recommendations, 1-866-731-7663, ext. 5.

Avoid placing the adhesive with other materials that have high plasticizer contents.

BEST PRACTICE SEQUENCE WITH VAPRO-SS FLASHING STEPS 1-9



1. Install WrapFlashing SA Self-Adhered into sill with 2.75" folded into Rough Opening (R.O.) 9" left on face, with bottom 6" of release film to remain attached.



2. Install jamb pieces with 2.75" folded into R.O. 9" to be left on face.



3. Install head piece with 2.75" folded into R.O. 9" to be left on face. Roll all WrapFlashing SA (orange) sections with weighted roller to ensure full contact.



4. Install Vapro-SS Flashing at sill in shingle fashion with 3" up-turned legs at sill and head + 1" on face; jambs are 1" onto the face.

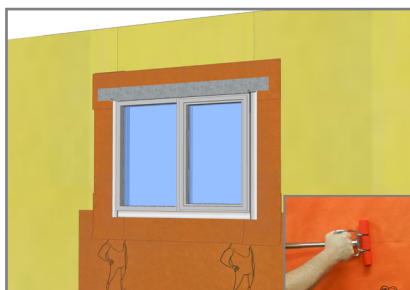
See Cut Patterns Detail P.3



5. Install Vapro-SS Flashing at jambs in shingle fashion with 3" up-turned legs at sill and head + 1" on face; jambs are 1" onto the face.



6. Install Vapro-SS Flashing on head in shingle fashion with 3" up-turned legs at sill and head + 1" on face; jambs are 1" onto the face. Roll all Vapro-SS Flashing with weighted roller to ensure full contact.



7. Install field membrane underneath 6" flap of sill flashing to create shingle effect, remove release film, adhere to membrane, roll to ensure adhesion at seams (overlaps).

7A. Install head flashing (by others) over Vapro-SS Flashing + embedded in VaproBond.



8. Install field membrane vertically to sheathing, maintaining 3" minimum overlap with R.O. flashing, roll to ensure adhesion at seams (overlaps).



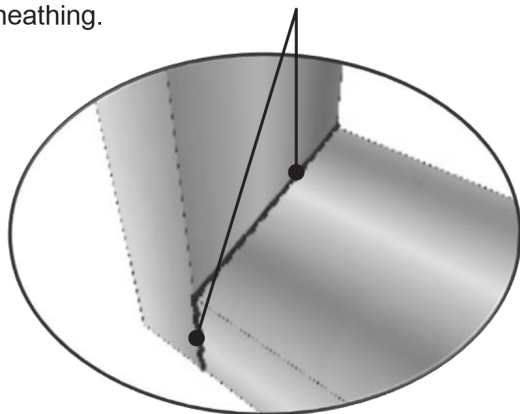
9. Install WrapShield SA field membrane over metal head flashing, maintaining 3" minimum overlap to adjacent field membrane. roll to ensure adhesion at seams (overlaps).

*A. To maintain continuity of air barrier system, while allowing for proper drainage at sill, a continuous interior window perimeter sealant joint with backer rod is required.

*B. To determine width dimension of Vapro-SS Flashing required; Measure the depth that the window projects into the rough opening from the exterior face of the wall and add 1/2".

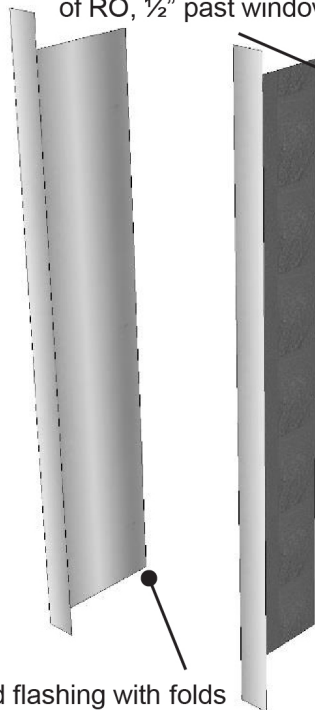
Cut Patterns

VaproBond or VaproLiqui-Flash ½" tooled fillet bead at each corner where inside of R.O. meets face of sheathing.



Section is adhered to inside of RO, ½" past window

Fold toward back of flashing, creating 1" flap to adhere to RO face

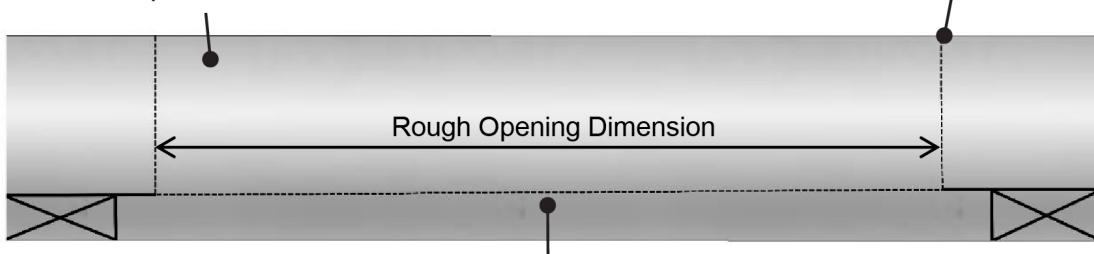


Rough Opening Dimension

Completed flashing with folds

Section is adhered to inside of RO, ½" past window

Fold toward face of Flashing 3" from edge

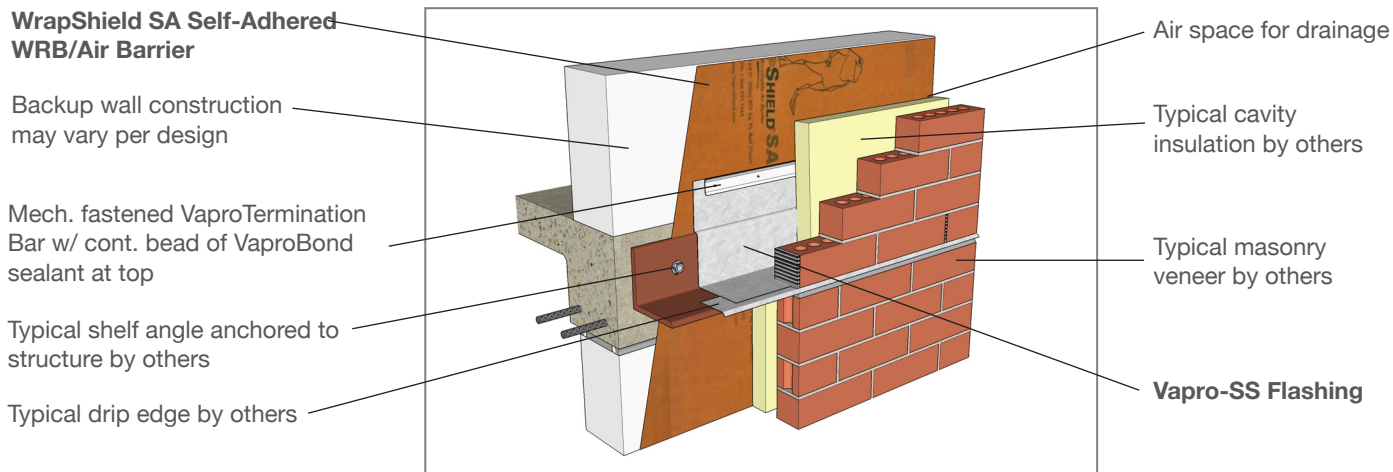


Fold toward back of flashing, creating 1" flap to adhere to RO face

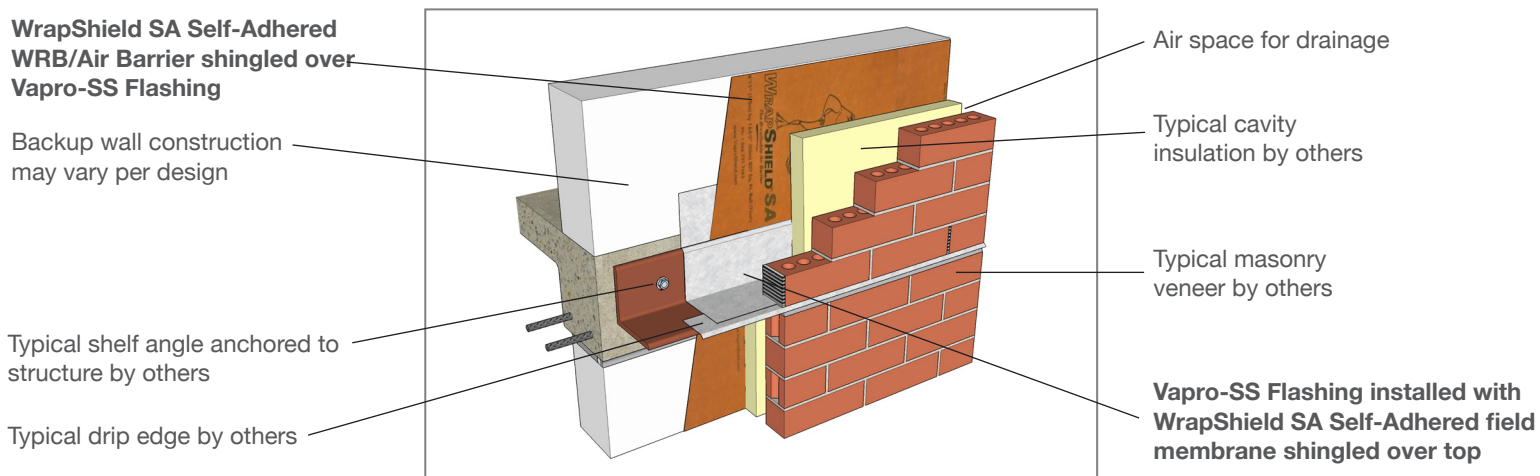
1" x 2" rectangle to be cut out, leaving 1" tab extending beyond 3" flap

Thru-wall Applications

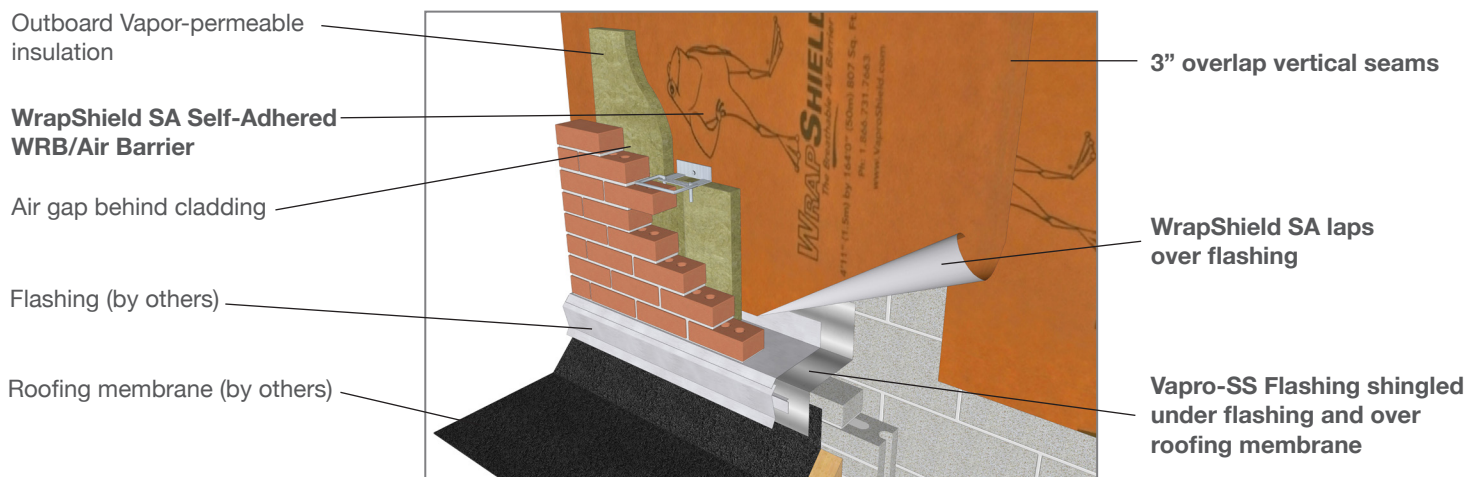
Thru-wall Shelf Angle Detail with VaproTermination Bar



Thru-wall Shelf Angle Detail with Integrated Field Membrane



Low Roof to Wall Detail



VaproShield LLC 20-Year Product Warranty

Job #:

Purchase Ship Date:

Installation Date:

Project Name:

Address:

City/State/Zip:

PRODUCT:

Owner Name:

Address:

City/State/Zip:

Installer Name

Address:

City/State/Zip:

Date Issued:

LIMITED PRODUCT WARRANTY AND DISCLAIMER*:

A) PRODUCTS TO WHICH WARRANTY APPLIES:

VaproShield membranes and roofing underlayments.

B) LIMITED WARRANTY:

The VaproShield membranes and roofing underlayments are suited for their intended use as an underlayment, weather resistive barrier or air barrier. VaproShield will warrant its products for a period of twenty (20) years from the date of purchase.

VaproShield will replace any faulty product, provided the product used is installed per the published installation instructions and details. VaproShield installation instructions are provided with the products and/or are available at www.vaproshield.com, or by calling VaproShield toll free at 1-866-731-7663.

This warranty is transferable upon sale of the project, but in no event does it extend beyond 20 years from the date of original purchase of the product. Any and all claims must be made in writing within 20 business days after the owner discovers or obtains knowledge of any defect in the product(s). VaproShield must be given reasonable opportunity to inspect the allegedly defective product and all damage prior to alteration or removal of the product or any surrounding building components.

All claims must be made in accordance with the claims and inspection procedure noted herein.

This warranty shall not apply to, and VaproShield shall not be liable for, any damages arising in whole or in part from any one or more of the following:

1) VaproShield membranes and roofing underlayments that are not stored or installed in accordance with

VaproShield's installation instructions in effect at the time of the installation.

2) Improper building practices or design not in accordance with the applicable building code or industry standards, or any deviation from approved construction plans or specifications.

3) Damage to VaproShield membranes and roofing underlayments resulting from causes other than normal weather conditions, including impact of falling objects, "Acts of God," earthquakes, hurricanes, flood, fire, hailstorms, high winds, cascading roof/floor water, ponding water, immersion in water, or improper installation of any building component.

4) Defects in the structure or a component of the structure (e.g., window, door, or wall system), premature deterioration of the building materials, or non-standard use of the VaproShield products.

5). Contamination of membrane with building site chemicals including, but not limited to, surfactants or substances that adversely affects its water resistance.

OPEN JOINT APPLICATIONS:

VaproShield will warrant material for any open jointed cladding systems when VaproShield's Best Practices, details, and installation instructions (in effect at the time of the installation) are followed.

C) DISCLAIMER:

This warranty is limited to product replacement. This warranty is the sole warranty and is being provided in lieu of any other warranties, whether express or implied. Neither VaproShield LLC nor any of its affiliated companies, including product manufacturers, suppliers, representatives or distributors shall be liable for labor costs, consequential damages (such as personal injuries or

damage to property) of any kind, loss of profits, loss of use, or any other damage or injury, whether known or unknown, that is caused or alleged to have been caused in whole or in part by any VaproShield product.

Any deviation from VaproShield's published Best Practices, details, and installation instructions (in effect at the time of the installation) shall void this warranty as to the entire project, unless such deviation was 1) pursuant to a written directive or approval by VaproShield's Technical Team or 2) specified and/or detailed by a qualified architect, engineer, or waterproofing consultant and such deviation is in conformance with all applicable building codes, regulations, and standard good building practices.

The International Building Code (IBC) requires buildings to be designed and constructed so as to prevent water accumulation within the wall assembly, including by installing a water-resistive barrier behind the exterior cladding. In addition, the building should provide a means of draining water to the exterior, unless it is determined that water behind the cladding would not be detrimental to the wall assembly. Conventional, exterior, stucco cladding systems must include an underlying drainage mat and a rainscreen water management system in order to qualify for our standard, 20-year material-only warranty on any VaproShield products used in stucco cladding wall assemblies.

Under no circumstances is a product sales representative, or any other individual or entity, authorized by VaproShield to direct or approve any VaproShield product installation, including but not limited to any deviation from VaproShield's published Best Practices, details, and installation instructions.

This Warranty is not valid unless and until VaproShield product has been paid for in full.