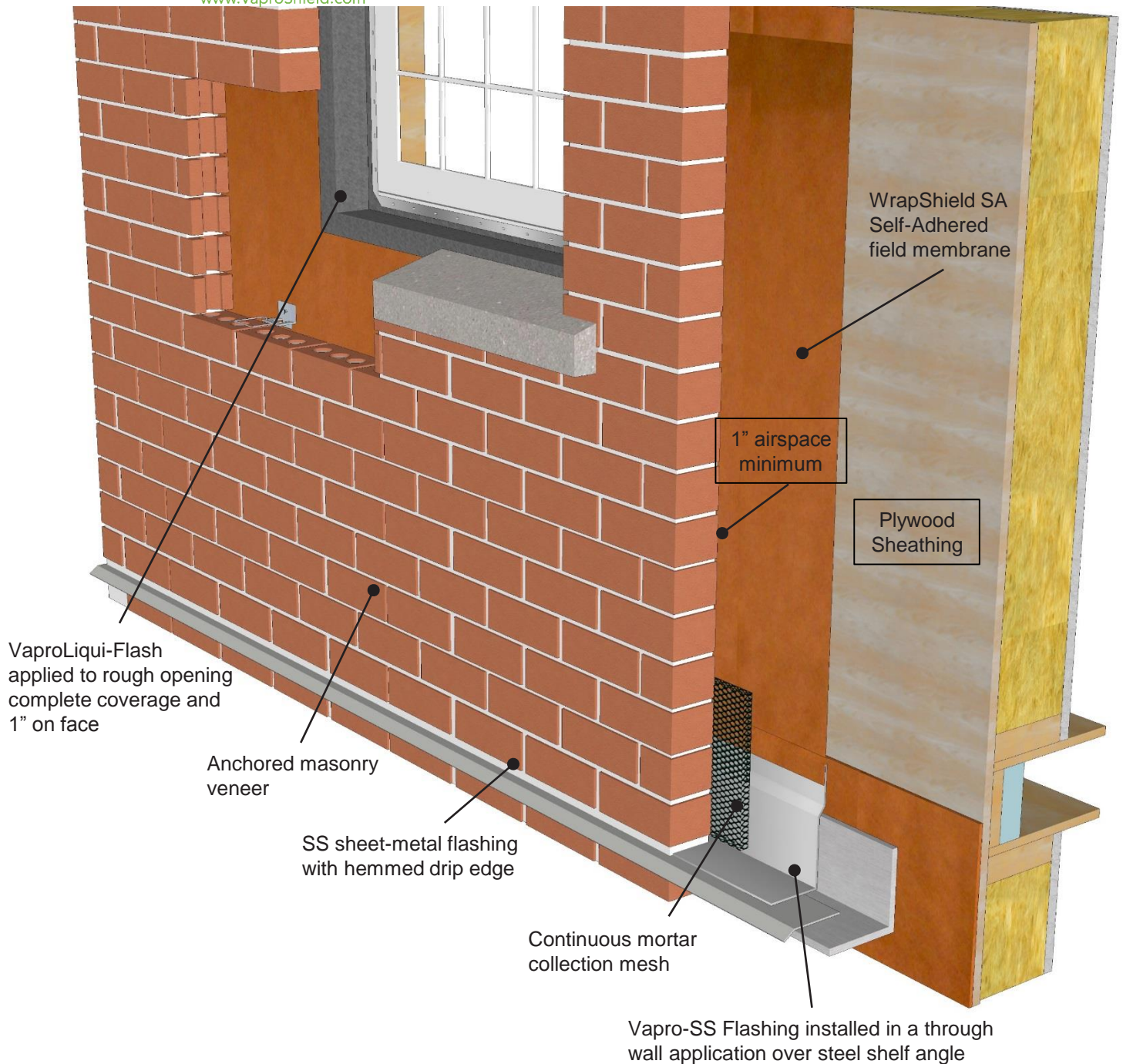


# Wood-Framed Wall with Wall Batt Insulation Only



**WRAP SHIELD SA**<sup>®</sup>  
**SELF-ADHERED**

**VAPRO-SS FLASHING**<sup>™</sup>

**PRODUCT DESCRIPTION**

WrapShield SA is a self-adhered, water resistive vapor permeable air barrier sheet membrane

Vapro-SS Flashing is a self-adhering metal flashing that offers best in class puncture and tear resistance.

**DISCLAIMER**

Detail sketch is generic, representing suggested best practices for VaproShield materials, and does not represent a specific job site condition and therefore may not be applicable to certain projects. Detail sketch is designed for use as a reference and must be approved by the designer/ consultant of record for each project prior to installation by the subcontractor. Changes and approvals of VaproShield details are the sole responsibility of the designer/consultant of record. VaproShield is **not** the designer of record for building enclosure details and takes no responsibility for the accuracy or interpretation of actual project site conditions.

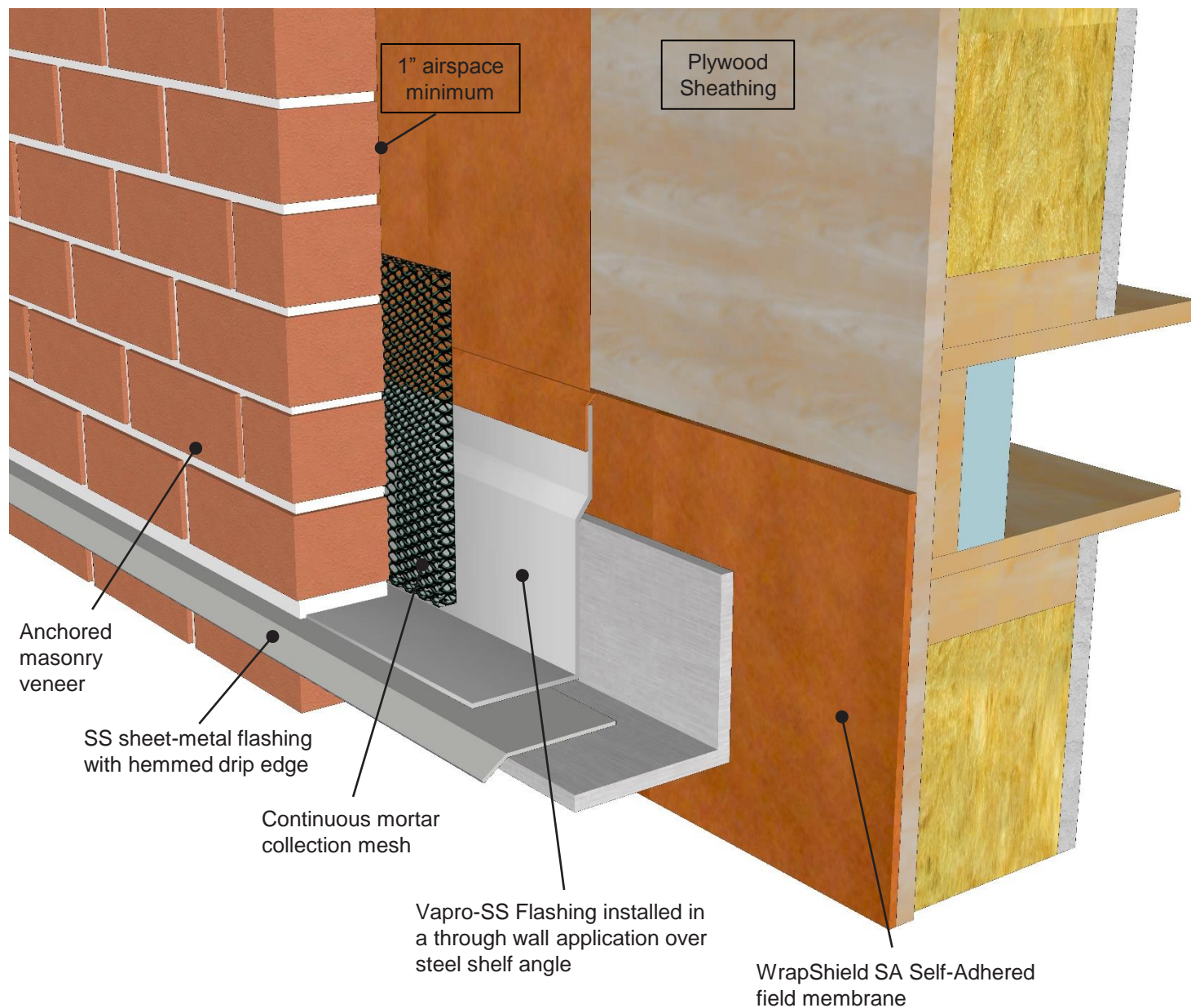
DRAWN BY: AR

DATE: 05.18.16

REF: 160

Always check [www.VaproShield.com](http://www.VaproShield.com) for the latest details and installation instructions

# Wood-Framed Wall with Wall Batt Insulation Only



**WRAPSHIELD SA®**  
**SELF-ADHERED**

**VAPRO-SS FLASHING™**

**PRODUCT DESCRIPTION**

WrapShield SA is a self-adhered, water resistive vapor permeable air barrier sheet membrane

Vapro-SS Flashing is a self-adhering metal flashing that offers best in class puncture and tear resistance.

**DISCLAIMER**

Detail sketch is generic, representing suggested best practices for VaproShield materials, and does not represent a specific job site condition and therefore may not be applicable to certain projects. Detail sketch is designed for use as a reference and must be approved by the designer/consultant of record for each project prior to installation by the subcontractor. Changes and approvals of VaproShield details are the sole responsibility of the designer/consultant of record. VaproShield is **not** the designer of record for building enclosure details and takes no responsibility for the accuracy or interpretation of actual project site conditions.

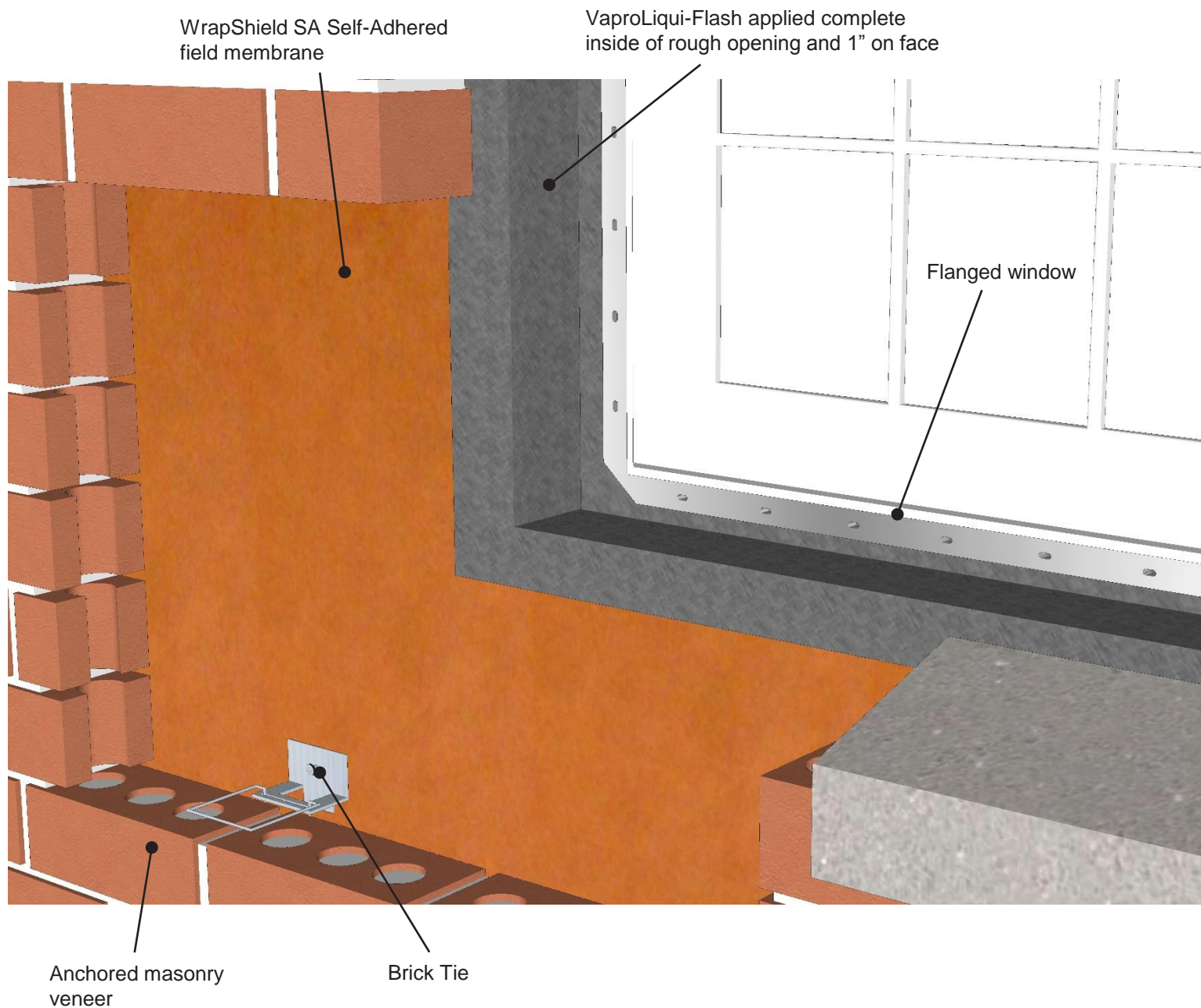
DRAWN BY: AR

DATE: 05.18.16

REF: 160

Always check [www.VaproShield.com](http://www.VaproShield.com) for the latest details and installation instructions

# Recessed Window Rough Opening



**WRAPSHIELD SA®**  
SELF-ADHERED

**VAPROLIQUI-FLASH™**

#### PRODUCT DESCRIPTION

WrapShield SA is a self-adhered, water resistive vapor permeable air barrier sheet membrane

VaproLiqui-Flash is a liquid applied, vapor permeable, waterproof, air barrier flashing system component for window and door rough openings.

#### DISCLAIMER

Detail sketch is generic, representing suggested best practices for VaproShield materials, and does not represent a specific job site condition and therefore may not be applicable to certain projects. Detail sketch is designed for use as a reference and must be approved by the designer/consultant of record for each project prior to installation by the subcontractor. Changes and approvals of VaproShield details are the sole responsibility of the designer/consultant of record. VaproShield is **not** the designer of record for building enclosure details and takes no responsibility for the accuracy or interpretation of actual project site conditions.

DRAWN BY: AR

DATE: 05.18.16

REF: 161

Always check [www.VaproShield.com](http://www.VaproShield.com) for the latest details and installation instructions