

**WALLSHIELD® Water Resistive Barrier**

**WRAPSHIELD® Water Resistive Barrier & Air Barrier**

**WATER RESISTIVE BARRIER FASTENERS**

**For Wood Sheathing/Exterior Gypsum Substrate**

Galvanized/stainless steel nails, screws or staples or brick veneer anchors (for spec see ICC ESR – 1916 downloadable at [www.vaproshield.com](http://www.vaproshield.com)).

**For Metal Girts**

VaproAdhesive sprayed at 2" wide and/or pancake head self-drilling screws with gasket/washer.

**For Concrete Substrate**

Spot attach with VaproAdhesive 2" wide at 18" on center Mechanically attach per cladding manufacturer's instructions.

**For Masonry Substrate**

Wall ties/mechanical fasteners as per building code requirements.

**AIR BARRIER FASTENERS**

**For Wood Sheathing/Exterior Gypsum Substrate**

Galvanized/stainless steel cap nails with caps at minimum of 1" diameter, screws with washers at minimum 1" diameter or brick veneer anchors (for spec see ICC ESR – 1916 at [www.vaproshield.com](http://www.vaproshield.com)).

**For Metal Girts**

VaproAdhesive sprayed at 2" wide and/or pancake head self-drilling screws with gasket/washer.

**WATER RESISTIVE BARRIER APPLICATIONS**

**STEP 1 – BEGIN FLASHING PENETRATIONS**

1. Cut a piece of WallShield/WrapShield to act as a "skirt" around counterflashed penetrations i.e. ducts/housings or pipes. Distance from penetration to edge of barrier "skirt" minimum 12".
2. Make four cuts to form a star shape and place over penetration snugly.
3. Extend "ears" of material along vertical penetration and seal with VaproTape Single-Sided.
4. Tape top edge of "skirt" to wall using VaproTape Single-Sided. Do not tape bottom edge.

**STEP 2 – ATTACH WATER RESISTIVE/AIR BARRIER**

1. Starting at base of wall, unroll WallShield/WrapShield horizontally across wall color side up. Best Practice: place a continuous bead of non-skinning butyl sealant or butyl tape on foundation wall and seal WallShield/WrapShield to it.
2. Extend 6" over starting corner.
3. Fasten at top and bottom or roll width with 2" from edge of WallShield/WrapShield to center of fasteners.
4. Fasten at maximum 2' 0" on center
5. Shingle next layers of WallShield/WrapShield ensuring minimum 6" horizontal and minimum 12" vertical laps. Ensure minimum 6" horizontal and minimum 6" vertical laps if taped with VaproTape Single-Sided at vertical laps. Do not place vertical laps above windows.
6. For delayed installation of siding/masonry determine fasteners and reduced fastener spacing for wind exposure (i.e. cap nails).
7. Please contact VaproShield toll-free (866) 731-7663 for high rise (>6 stories/ >75ft) installation instructions.

**STEP 3 – FINISH FLASHING PENETRATIONS**

1. Ensure WallShield/WrapShield is slipped under bottom edge of penetration "skirt" and shingled over taped top edge.
2. Seal top and sides with VaproTape Double-Sided.
3. Ensure whole "skirt" assembly is flashed appropriately with metal.

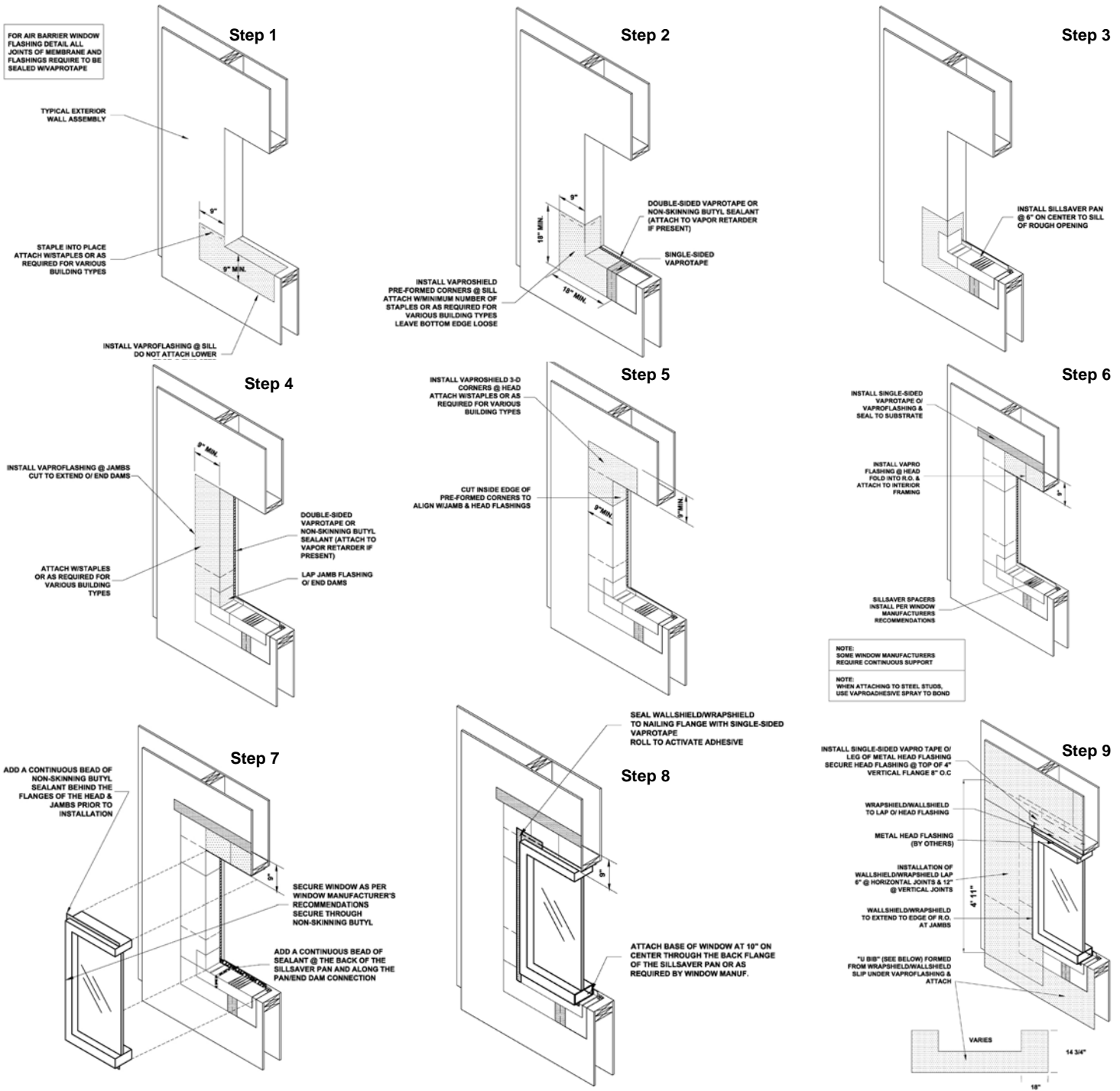
**STEP 4 – INSTALL SIDING/MASONRY**

1. Cladding boards – per cladding system installation requirements. For information on use of Black WrapShield in open joint applications refer to Page 2 or [www.vaproshield.com](http://www.vaproshield.com).
2. Masonry – wall ties/mechanical fasteners/veneer anchors as per building code requirements.

**AIR BARRIER APPLICATIONS**

1. Install WrapShield between sill plate and foundation gasket and seal to foundation wall with a bead of non-skinning butyl or butyl tape (VaproTape Double-Sided).
2. Method A: Flash penetrations and install WrapShield according to water resistive barrier installation instructions. Install using 1" diameter plastic cap nails or screws with 1" diameter gaskets/washers every 12" o.c. up vertical stud lines (max. 16" on horizontal). Method B (wood sheathings only): Install using 1" crown staples or 7/16" crown cap staples every 6" o.c. up vertical stud lines. Method A&B: During installation, ensure rainwater cannot drain behind air barrier (use tape).
3. Tape all vertical and horizontal laps using VaproTape "AB" (air barrier) or VaproTape Single-Sided.
4. Overlap WrapShield and ceiling air barrier and seal with VaproTape Single-Sided.

Flanged Window Flashing Details-Method A Additional Window Details for: Non-Flanged, Post-Wrap, Retrofit, Rain Screen and Air Barrier Applications on [www.VaproShield.com](http://www.VaproShield.com)



## VAPROTAPE™ Guidelines (not "AB" Tape)

1. Keep tape at room temperature (68° F +) before use.
2. Apply to a clean dry surface only. If surface has moisture or frost, dry prior to application. If surface is below 50° F:
  1. Heat the surface with a hot air gun and/or
  2. Heat the tape to a warmer temperature (comfortable to the touch) and/or
  3. Wait for the surface to warm up naturally
3. Peel off approximately 4" of release liner (protective film).
4. Apply to surface, covering the seam.
5. Roll with tape roller for full adhesive contact.
6. Minimize UV exposure to tapes, except UV Black.

## VAPROSHIELD Open Joint Rain Screen Systems

### RAIN SCREEN DESIGN

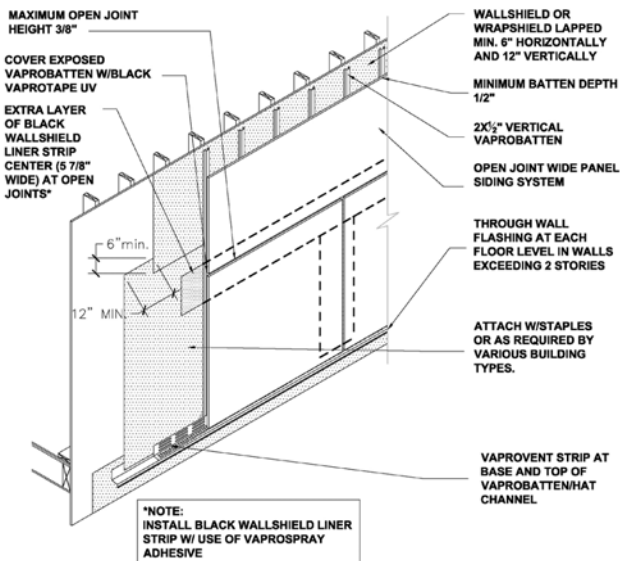
A multiple-element approach to control water penetration into exterior walls.

1. First line of defense manages the driving forces of weather.
2. Second line of defense designed to intercept all water passing through first line of defense and allowing it to drain to the exterior.

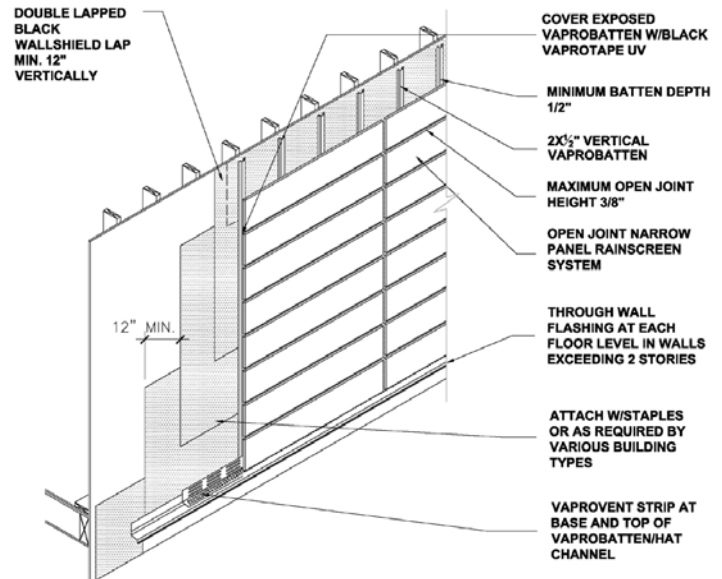
### VAPROSHIELD BEST PRACTICES

1. Please contact VaproShield toll-free at (866) 731-7663 for high rise installation instructions (>6 stories/ >75ft).
2. Install primary cladding within 30 days **only** when using membranes in open-jointed rain screen applications.
3. Cladding must have a batten between it and water resistive barrier/air barrier. At open joints cover exposed VaproBatten with VaproTape UV Black (see Image C).
4. Ensure minimum 1/2" batten depth and maximum 3/8" open joint height.

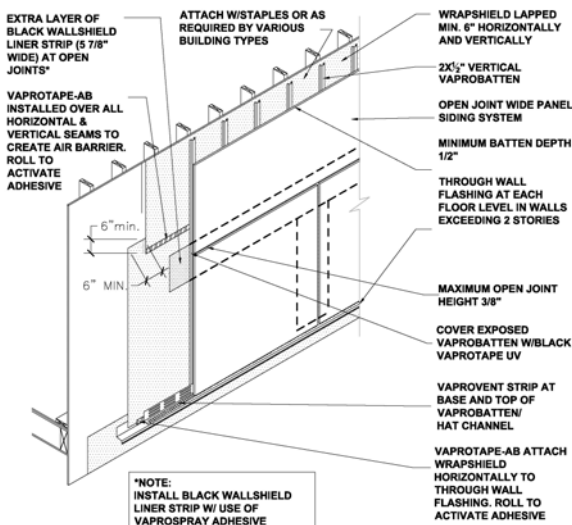
**(A) Open Joint Rain Screen – Wide Panel**



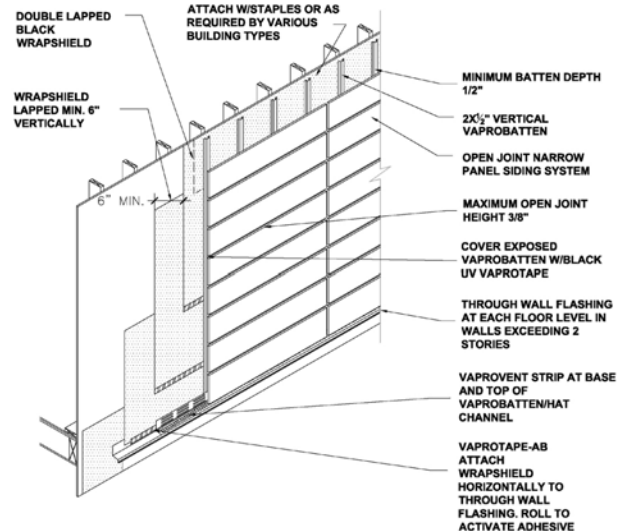
**(B) Open Joint Rain Screen – Narrow Panel**



**(C) Open Joint Rain Screen – Wide Panel – Air Barrier**



**(D) Open Joint Rain Screen – Narrow Panel – Air Barrier**





## VaproShield LLC 20-Year Product Warranty

**Job #:**  
**Purchase Date:**  
**Installation Date:**

**Owner Name:**  
 Address:  
 City/State/Zip:

**Project Name:**  
 Address:  
 City/State/Zip:

**Installer Name:**  
 Address:  
 City/State/Zip:

**PRODUCT:**

**Date Issued:**

**VaproShield** products are manufactured using a spun bonded, triple layer, high-density polypropylene fabric.

### LIMITED PRODUCT WARRANTY AND DISCLAIMER\*:

**A) PRODUCTS TO WHICH WARRANTY APPLIES:**

- 1). WALLSHIELD®
- 2). WRAPSHIELD®
- 3). WRAPSHIELD SA® SELF-ADHERED
- 4). WRAPSHIELD HS ®
- 5). ReNewShield™
- 6). SLOPESHIELD®
- 7). SLOPESHIELD SA® SELF-ADHERED
- 8). VAPROFLASHING™
- 9). FACTORY FORMED CORNERS™

**B) LIMITED WARRANTY:**

The WallShield, WrapShield, WrapShield SA, WrapShield HS, ReNewShield, SlopeShield and SlopeShield SA products are suited for their intended use as an underlayment, weather resistive barrier, or as an air barrier. VaproShield will warrant its products for a period of twenty (20) years from the date of purchase. VaproShield will replace any faulty product, provided the product used is installed per the published installation instructions and details. VaproShield installation instructions are provided with the products and are available at [www.vaproshield.com](http://www.vaproshield.com), or by calling VaproShield toll free at 1-866-731-7663.

This warranty is transferable upon sale of the project, but in no event does it extend beyond 20 years from the date of original purchase of the product. Any and all claims must be made in writing within 20 business days after the owner discovers or obtains knowledge of any defect in the product(s). VaproShield must be given reasonable opportunity to inspect the allegedly defective product and all damage prior to alteration or removal of the product or any surrounding building components.

**All claims must be made in accordance with the claims and inspection procedure noted herein.**

This warranty shall not apply to, and VaproShield shall not be liable for, any damages arising in whole or in part from any one or more of the following:

- 1) WallShield, WrapShield, WrapShield SA, WrapShield HS, ReNewShield, SlopeShield, or SlopeShield SA that is not stored or installed in accordance with VaproShield's installation instructions in effect at the time of the installation.
- 2) Improper building practices or design not in accordance with the applicable building code or industry standards, or any deviation from approved construction plans or specifications.
- 3) Damage to WallShield, WrapShield, WrapShield SA, WrapShield HS, SlopeShield, or SlopeShield SA resulting from causes other than normal weather conditions, including impact of falling objects, "Acts of God," earthquakes, hurricanes, flood, fire, hailstorms, high winds, cascading roof/floor water, ponding water, immersion in water, or improper installation of any building component.
- 4) Defects in the structure or a component of the structure (e.g., window, door, or wall system), premature deterioration of the building materials, or non-standard use of the VaproShield products.
- 5). Contamination of membrane with building site chemicals including, but not limited to, surfactants or substances that adversely affects its water resistance.

**OPEN JOINT APPLICATIONS:**  
 VaproShield will warrant material for any open jointed cladding systems when VaproShield's details and Best Practices are followed.

**VAPROTAPE:**  
 When applicable, according to installation instructions, VaproTape must be utilized with mechanically attached membrane products for warranty to apply.

**C) DISCLAIMER:**  
**This warranty is limited to product replacement. This warranty is the sole warranty and is being provided in lieu of any other warranties, whether express or implied. Neither VaproShield LLC nor any of its affiliated companies, including product manufacturers and suppliers, shall be liable for labor costs, consequential damages (such as personal injuries or damage to property) of any kind, loss of profits, loss of use, or any other damage or injury, whether known or unknown, that is caused or alleged to have been caused in whole or in part by any VaproShield product.**

This Warranty is not valid unless and until Vaproshield product has been paid in full.