

Innovative Building Envelope News from VaproShield

# VaproShield Ribbit Review



January 2014

## Who Is VaproShield?

For over a decade VaproShield has designed and manufactured weather resistive vapor permeable (WRB), air barrier (AB) membranes and accessories creating a total solution-based approach to protecting the building envelope.

Our innovative features such as integrated tape, hybrid fluid applied flashing, pre-formed corners and sealants have been rigorously tested together to maximize life-long building envelope performance and minimize building failure rates.

## VaproShield Membrane Stands Up to Volatile Yukon Territory, Canada

Allowing for all climate construction from -17°C to 49°C degrees, durable, tear resistant

WrapShield SA Self-Adhered Air Barrier was selected for the Waterfront



Station construction because of its proven reliability in frigid climates.

## Continuing Education

VaproShield offers Rain Screen Design Solutions for the Building Envelope as an AIA/CEU accredited course. The course is approved by over a dozen organizations for CEU credit. Visit [VaproShield.com](http://VaproShield.com).

## VaproShield Membranes Perform in Extreme Weather

WrapShield SA Self-Adhered Air Barrier Weathers Minnesota's Coldest December in 41 Years!



WrapShield SA Self-Adhered Air Barrier offered superior protection to the historic Old Schmidt Brewery during St. Paul, MN's coldest December since 1972. The water resistive, air barrier sheet membrane successfully protected the restoration's delicate building

envelope despite frequent precipitation and lows of -15°F (-26°C)\*.

## Neither Ice, Nor Snow, Nor Gusting Winds Ruffle VaproShield Membranes!

Winters in Nome, AK are severe with sustained temperatures of 0°F\* (-17°C) and continuous wind gusts between 20-50 mph. These demanding conditions made WrapShield SA Self-Adhered Air Barrier the ideal solution for Norton Sound Hospital. Known for durability, WrapShield SA Self-Adhered went up quickly and remained entirely intact despite the bleak, wintry climate



## Website Additions

### New Rapid Installation - Stellar Results!

Watch 150 sq.ft. (14 m<sup>2</sup>) of WrapShield SA Self-Adhered Air Barrier being installed in 5 seconds! As the roll falls, it adheres directly to the plywood substrate in temps hovering around 20-32 degrees F (-6-0 degrees C)\*. The installers applied 800-1000 sq.ft. (74-92 m<sup>2</sup>) in 30 minutes using this innovative technique.

[VaproShield.com/stellarresults](http://VaproShield.com/stellarresults)



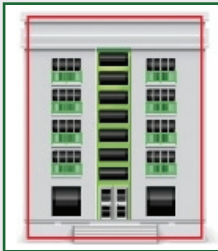
Innovative Building Envelope News from VaproShield

## VaproShield Ribbit Review



### Affordable Air Barrier Solution

VaproShield offers Hybrid Monolithic Window Flashings, Breathable Weather Resistive Air Barrier Membranes and Rain Screen Design Components creating high performance Air Barrier Solutions tested to ASTM E2357 standards.



### Hurricane Sandy Couldn't Shake WrapShield SA Self-Adhered Air Barrier



When Hurricane Sandy hit in mid-October 2012, \$16.5 million dollar Long Beach High School was without cladding. Protected by only 50,000 sq. ft. (4,645 m<sup>2</sup>) of WrapShield SA Self-Adhered Air Barrier, Long Beach High School braved days of torrential rainfall and wind gusts over 70 mph. When the storm cleared, WrapShield SA Self-Adhered\* showed zero signs of damage. There was no sign of leakage or water damage to Long Beach High School's building envelope.

### Upcoming Events

BUILDEX Vancouver Vancouver, BC  
Feb. 19-20, 2014  
Booth # 439

RCI Trade Show 2014 Anaheim, CA  
March 20-25  
Booth #638

Mia Green Expo Miami Beach, FL  
Convention Center  
Feb. 27-28, 2014  
Booth # 629

AIA Expo 2014 Chicago, IL  
McCormick Place  
June 26-28  
Booth #2742

### Ribbit Resource

#### "Impermeable Self-Adhered Flashing Prevents Outward Drying"

December 12, 2013 - Blog entry via Built Environments

"Some moisture will move inward into the cavity, but interior vapor retarders restrict inward drying. Likewise, the impermeable self-adhered flashing prevents outward drying. Moisture must now traverse the space that is contained by the self-adhered flashing on the corresponding exterior sheathing surface."

Read the blog entry "Unintended Consequences of [Impermeable] Self-Adhered Flashing," view images of moisture penetration problems and review diagrams about moisture and vapor movement between the exterior, cladding, sheathing and wall cavity at <https://builtenv.wordpress.com>.

### VaproShield in the News

**ARCHITECTURAL  
RECORD**

Mercer Court, University of Washington is highlighted in Architectural Record's Sept 2013, "Design Is In The Details". The in-depth article investigates the versatility, durability and - most importantly - longevity of wood construction. The piece goes on to outline the principles of water management when building with wood.



Contact Us with your building envelope questions, newsletter topic suggestions, or join our mailing list. Visit [VaproShield.com](http://VaproShield.com).

\*VaproShield is pleased that WrapShield SA Self-Adhered Air Barrier has performed in extreme conditions. It is important to note that WrapShield SA Self-Adhered has been tested to withstand 180 days of UV and climate exposure prior to installation of cladding and be installed in temperatures over 20°F (-6°C). If your job requires installation in extreme weather conditions, please contact VaproShield Technical Team,

1-866-731-7663, [technical@vaproshield.com](mailto:technical@vaproshield.com).