

## OVERVIEW

VaproLiqui-Flash is a liquid applied Waterproof Flashing material for window and door rough opening interfaces. It is designed for use with VaproShield Sheet Membranes in Air Barrier and Weather Resistive Barrier applications.

VaproLiqui-Flash is a unique material formulated to bond to VaproShield membranes and most common wall substrates without primers, forming a monolithic, waterproof surface while remaining permeable to water vapor. It allows underlying moisture to escape to the exterior, reducing the potential for mold and decay that can be associated with non-permeable flashings.



## TECHNICAL DATA

- VaproLiqui-Flash comes in gun-able 20 oz. (567 g) sausages.
- Easily spreads with a putty knife to a thickness of 12 to 15 wet mils.
- Bonds and cures on damp or wet substrates.
- May be exposed for up to 6 months prior to covering with primary exterior cladding.
- Non-corrosive and adds self-sealing properties to fastener penetrations.
- Surface and ambient temperatures must be above 35° and below 100°F (2°-38°C) for application.
- Cured service temperatures: -50° to 350°F (-45° to 175°C).
- Skins-over in 30 minutes and dries in 4 hours at 70°F (21°C) and 50% relative humidity.
- Compatible with most silicone, urethane and acrylic sealants and coatings.
- Compatible with most building materials.
- Will not support mold growth.



**Bonds and cures to wet and damp substrates.**

## STORAGE AND HANDLING

Store in a cool, dry place. Keep tightly closed when not dispensing. Do not open until preparation work has been completed. Do not alter or mix with other chemicals.

## CLEANUP

Clean tools and equipment with mineral spirits or similar solvent immediately after use.



**Ribbit Tip:**  
May be exposed for up to 6 months prior to covering with primary exterior cladding.



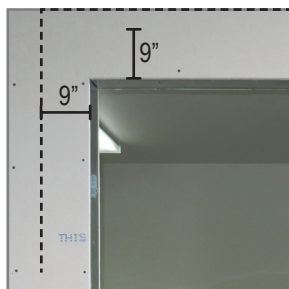


**BEST PRACTICE INSTALLATION SEQUENCE WITH VAPROFLASHING SA SELF-ADHERED  
STEPS 1-7 (OUT OF 14)**



Note: Before beginning, make sure all sheathing materials are clean, free of dust, and trimmed flush with framing members at rough openings and that all materials, sausage gun, and putty knife are on site.

1. Cut and install VaproFlashing SA patches over pre-punched holes in metal studs, if present.



2. Measure and cut VaproFlashing SA sill, left & right jambs, and head flashing so that each piece extends 9" past edges of opening for each side (= R.O. + 18").



3. Install VaproFlashing SA at bottom of sill by removing release paper from top 6" of flashing material and sticking it in place, leaving 6" of release paper on the lower half of the material for shingling over membrane.



4. Slit material at corners to allow it to fold into the opening.



5. Fold flap into opening and adhere to inside surface, being sure to keep the lower 6" of release paper intact.



6. Install left & right jamb flashing, adhering the entire flashing to the left and right of the jamb by removing the release paper starting at the top and slowly pulling down, smoothing with your other hand as you remove the release paper.



7. Repeat steps 4 and 5 for the left & right jamb flashing.



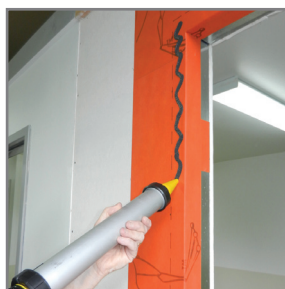
**BEST PRACTICE INSTALLATION SEQUENCE WITH VAPROFLASHING SA SELF-ADHERED**  
**STEPS 8-14 (OUT OF 14)**



8. Install head flashing only after both left & right jamb pieces are fully adhered.



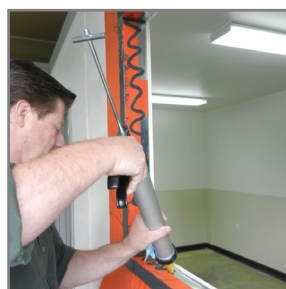
9. Repeat steps 4 and 5 for the head flashing.



10. Using the sausage gun, apply VaproLiqui-Flash in a zigzag pattern on the wall face surrounding the rough opening.



11. Immediately spread the applied material with a putty knife creating a 1" border around the rough opening.



12. Apply additional VaproLiqui-Flash in zigzag pattern on all inner surfaces of the rough opening.



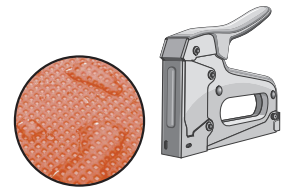
13. Immediately spread until all surfaces are completely covered and substrate below is no longer visible (approximately 12 to 15 wet mils).



14. Allow VaproLiqui-Flash to set up until dry to the touch, then inspect for voids and apply additional VaproLiqui-Flash as needed to achieve complete coverage.



Completed application of VaproLiqui-Flash installed around all surfaces of rough opening.



**BEST PRACTICE INSTALLATION SEQUENCE WITH VAPROFLASHING**

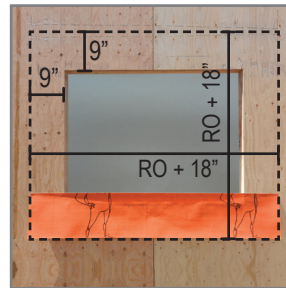
**STEPS 1-6 (OUT OF 12)**

**IMPORTANT INSTALLATION NOTES:**

1. Mechanically Attached VaproFlashing requires that the sections inside the window opening be fully embedded in VaproLiqui-Fash.
2. Staples should be placed in locations that will be covered by VaproLiqui-Fash or shingled by field membrane.



Before beginning, make sure all sheathing materials are clean, free of dust, and trimmed flush with framing members at rough openings and that all materials, sausage gun, and putty knife are on site.



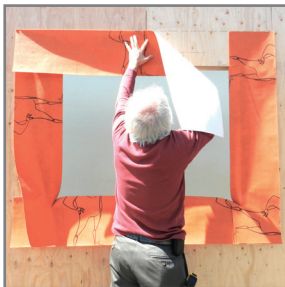
1. Measure and cut VaproFlashing sill, left & right jambs, and head pieces so that each piece extends 9" past edges of opening for each side (= R.O. + 18").



2. Install flashing at sill by minimally stapling it to the sheathing, leaving the lower 6" free for shingling over wall membrane.



3. Install left & right jamb flashing with minimal stapling, allowing for later shingling with wall membrane.



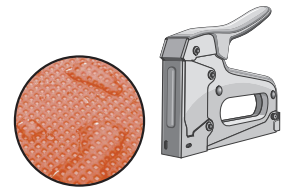
4. Install head flashing after left & right jamb pieces.



5. Slit each piece where it meets rough opening corners to allow center 2.75" deep flap to fold into the opening.



6. Using the sausage gun, apply VaproLiqui-Fash in a zigzag pattern on outer 2.75" of inside of rough opening.



**BEST PRACTICE INSTALLATION SEQUENCE WITH VAPROFLASHING**  
**STEPS 7-12 (OUT OF 12)**



7. Immediately fold flaps into opening, pressing into the VaproLiqui-Flash with putty knife, spreading VaproLiqui-Flash evenly beneath VaproFlashing.



8. Using the sausage gun, apply a second layer of VaproLiqui-Flash over the folded flaps in a zigzag pattern on the inner surface of the rough opening.



9. Immediately spread the applied material with a putty knife, fully embedding the inner flaps of VaproFlashing sill, right & left jamb, and head pieces, fully covering all inner surfaces of rough opening.



10. Apply VaproLiqui-Flash in a zigzag pattern on the wall face surrounding the rough opening.



11. Immediately spread the VaproLiqui-Flash with a putty knife creating a 1" border around the rough opening (approximately 12 to 15 wet mils), paying special attention to the corners and edges.



12. Allow VaproLiqui-Flash to set up until dry to the touch, then inspect for voids and apply additional VaproLiqui-Flash as needed to achieve complete coverage.



**For Additional Technical Assistance Contact VaproShield: 1.866.731.7663**