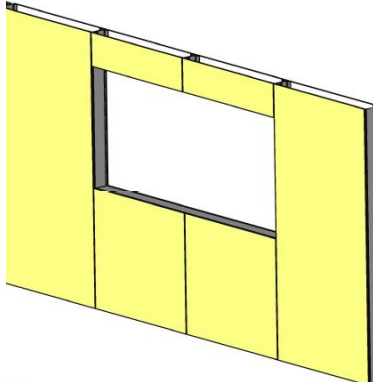
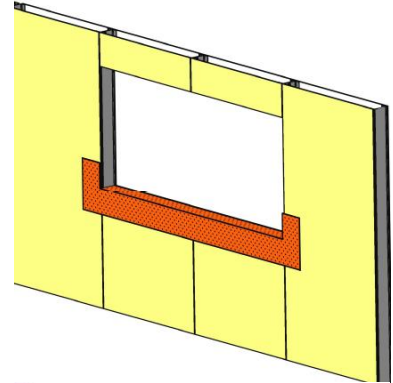


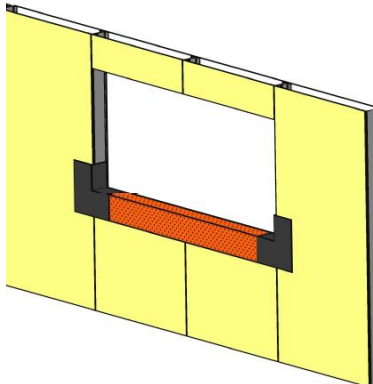
1 Begin with installing VaproFlashing at all window and door penetrations.



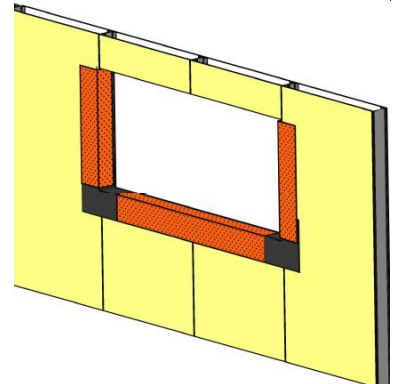
2 Install VaproFlashing at sill, extending 9" at bottom and on each side of window. Cut at jambs and fold into rough opening as shown.



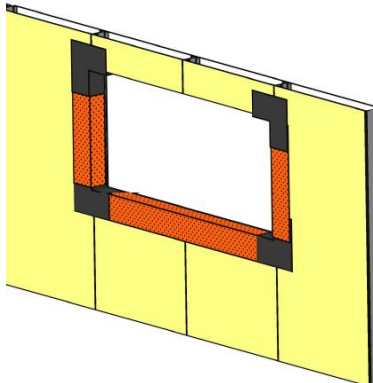
3 Install VaproFlashing Factory Formed Corners at the bottom rough opening corners, using SS Staples into wood framing or VaproAdhesive spray on metal framing.



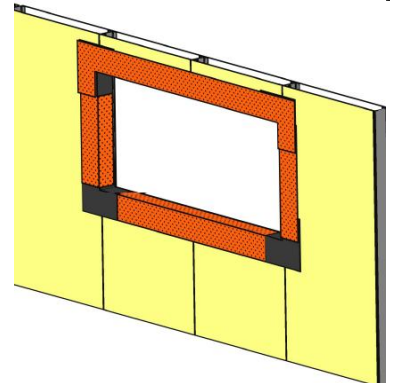
4 Install VaproFlashing at jambs as shown, leaving 9" on face of wall.



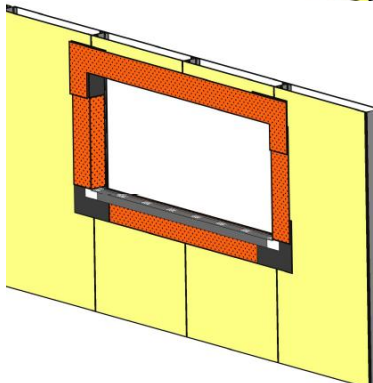
5 Install VaproFlashing Factory Formed corners at the top left and right corners as shown.



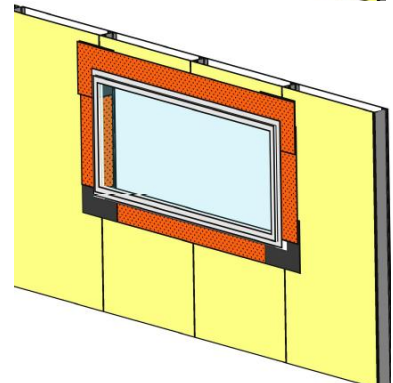
6 Install VaproFlashing at window head, extending 9" above and on each side of window. Cut at jambs and fold into rough opening as shown.



7 Install VaproSillSaver pan in a continuous bead of sealant.



8 Install Window (by others) per Window manufacturer's instructions.

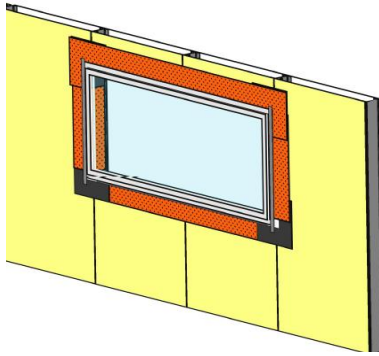


*VaproSillSaver pan is shown for **Nail Flange Windows** only.

Do not caulk behind the flange at the sill when using VaproSillSaver Pan.

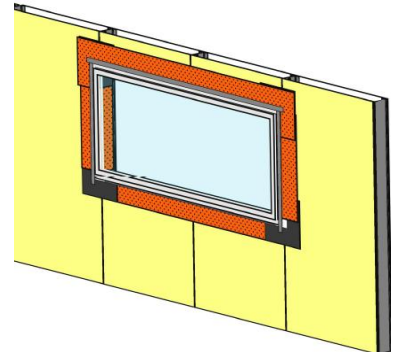
9 Install 3" VaproTape at the jambs to seal the window flange to the VaproFlashing:

Roll VaproTape aggressively with weighted roller to activate.

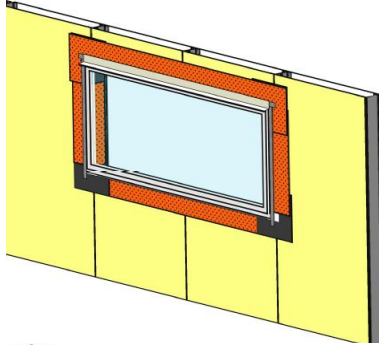


10 Install 3" VaproTape at the head to seal window flange to the VaproFlashing:

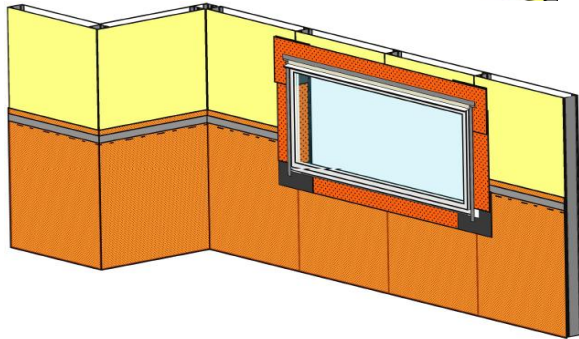
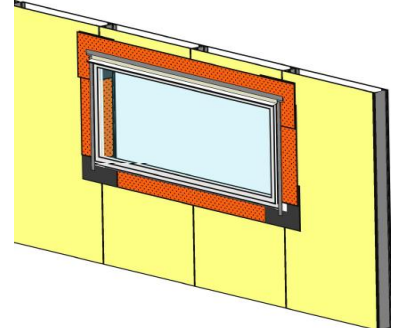
Roll VaproTape aggressively with weighted roller to activate.



11 Install Head Flashing (by others) extending past each side of window 3/8" with end dams and drip edge to deflect water away from window.

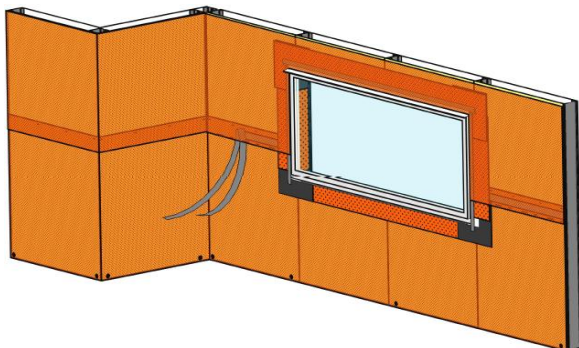
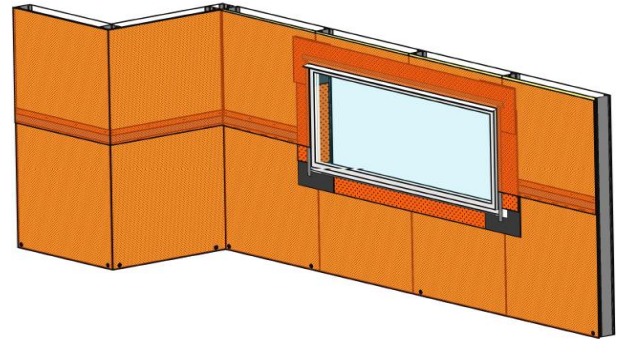


12 Install 3" VaproTape over upturned leg of head flashing to seal head flashing to the VaproFlashing.



13 Begin Installation of WrapShield field membrane at the base of the wall, and shingle the VaproFlashing over the WrapShield at the window. Use SS Staples or Cap Nails across the top 2" (tape free area) of the WrapShield, as temporary fasteners, until cladding is installed. Seal VaproFlashing to the field membrane with a continuous bead of Dow 758 sealant.

14 Install next course of WrapShield material with a 6" overlap (use dotted lap line provided) over lower course. Shingle WrapShield over the VaproFlashing at Window, temporarily fastening with SS Staples or Cap Nails across the top 2" of WrapShield, cutting material around the window frame. Seal WrapShield field membrane to the VaproFlashing at the jambs and head with a continuous bead of Dow 758 sealant.



15 At the 6" horizontal overlap, pull the 2 release papers from the WrapShield layers at the same time while smoothing the seam together with hand pressure to join the integral tape seal for air barrier continuity.

16 Install VaproCaps with screws in locations that will not interfere with cladding attachments to hold membrane in place until VaproBattens, hat channel or other cladding attachment components are installed.

