

Innovative Building Envelope News from VaproShield

# VaproShield Ribbit Review

## Who is VaproShield

VaproShield is an industry leader of innovative, affordable breathable membrane systems for walls and roofs that reflect state-of-the-art building science. Our team of Building Enclosure Specialists offers technical expertise and clear understanding of building construction technology.

## VaproShield Speaks At Northwest Ecobuilding Guild Retreat

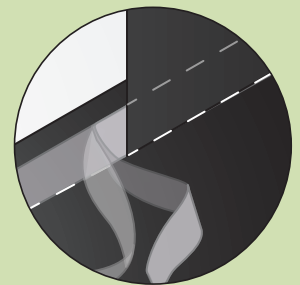
Aaron Gould, of VaproShield, was a speaker at the 15th Annual Northwest EcoBuilding Guild's Member Retreat which took place Oct 19-21. Aaron explored the science behind high performance wall systems and how to create structures that withstand the test of time while also requiring minimal energy, both BTU's and human, to operate and maintain.



VaproShield has installed millions of square feet of breathable membranes on commercial, institutional and high-end residential projects.

## LEAPFROGGING the COMPETITION RevealShield for Open Joint Cladding Systems

VaproShield continues to be innovative launching RevealShield, a black, UV stable, water resistive vapor permeable air barrier membrane. Clear Integrated Tape protected by the 6" horizontal lap allows easy installation. Apply only a single layer of RevealShield Water Resistive Vapor Permeable Air Barrier Membrane to create the desired black open joint.



### SINGLE LAYER = LESS MATERIAL COSTS AND INSTALLATION TIME

Only a single layer of RevealShield is required behind the open joint cladding, eliminating the need for a double layer.

### REDUCE TAPE COSTS and CONTRACTOR LIABILITY

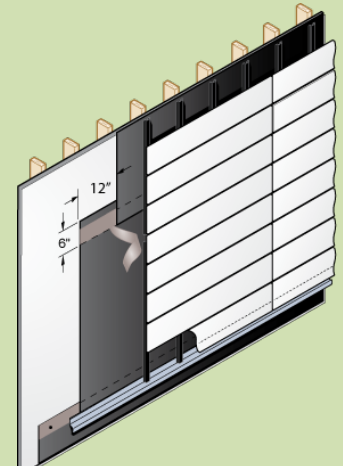
RevealShield includes concealed, clear, Integrated Tape at the horizontal seams. Integrated Tape limits tape failures, reduces costs of tapes and minimizes labor for installation, while simultaneously creating the necessary shingle layer effect.

### INSTALL YEAR AROUND

Install RevealShield year around in all climates. The Integrated Tape can withstand extreme temperature variations (hot or cold).

### MORE DESIGN OPPORTUNITIES

RevealShield can be used with joints up to 2" wide and a maximum 40% total open wall area.



Contact us with your building envelope questions, newsletter topic suggestions or join our mailing list.



FIND US ON  
FACEBOOK



Team  
VaproShield

Innovative Building Envelope News from VaproShield

# VaproShield Ribbit Review

## VaproShield Projects

Pier 27 Cruise Terminal  
San Francisco, CA



Over 65,000 sq.ft. of WrapShield SA Self-Adhered Water Resistive Vapor Permeable Air Barrier Sheet was installed on the Pier 27 Cruise Terminal in San Francisco. The terminal is to include a year-round cruise terminal, public plaza, and community facility. With the award of the America's Cup to San Francisco, the pier will also be used as the starting and finishing line for the race in 2013.

National Renewable Energy Lab  
Golden, CO



Over 32,000 sq.ft. of WrapShield SA Self-Adhered Water Resistive Vapor Permeable Air Barrier Sheet was installed on the National Renewable Energy Lab in Golden, Colorado which is the only national laboratory solely dedicated to advancing renewable energy and energy efficiency technologies from concept to commercial application. The 360,000 sq.ft. building achieved LEED Platinum status

## REDUCE INSTALLATION TIME

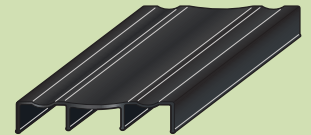
### Use Complete System of Components

#### VAPROBATTEN, REVEALFLASHING, VAPROLIQUI-FLASH

VaproShield offers a complete system of components that support open joint design.

#### BLACK VAPROBATTEN

VaproBatten is a UV stable, breathable vinyl batten system that can be used behind traditional or open joint cladding systems. It will not rot, is very lightweight and is now available in 5' lengths for ease of handling.



#### REVEALFLASHING

RevealFlashing is RevealShield factory cut into two widths, 6.5" and 11.75" for quick and easy installation.

#### VAPROLIQUI-FLASH

VaproLiqui-Flash is a unique liquid applied, moisture cured, flashing material formulated to bond without primers to VaproShield membranes and most common wall substrates. It forms a monolithic, waterproof surface, ideal for flashing rough openings and remains permeable to moisture vapor.



Creating an open joint application with RevealShield and our black components saves valuable installation time, reduces contractor liability and offers more design opportunities.

## RIBBIT RESOURCE

### Water Intrusion Problems... Did You Know?

Excerpt from "Rainscreen Description Manual" by Building Envelope Engineering (BEE)

- It is imperative to have window and flashing details correct, since these are the areas where leaks are especially common.
- Many residential and many commercial buildings suffer water intrusion problems.
- In most cases damage is not immediately visible since it is hidden by the siding or cladding.
- Moisture meters, Boris scopes and infrared cameras can be used to determine possible problem areas hidden behind siding, rather than relying on a purely visual inspection of the exterior.
- Consider Rain Screen Design for your next new construction project or retrofit and mitigate liability.